

The people in the cities complain of the constant noise at night, while out in the country they can't sleep because of the plaguey quiet.
It is dangerous to ride in automobiles now, because of the congestion, and dangerous to stay at home because you will lack exercise.

HINE & HINE

REAL ESTATE LOANS and INSURANCE

15 S. St. Johns Avenue
Highland Park, Ill. Tel. 2340
Chicago Office
Suite 35, 37 W. Jackson Blvd.
Phone Harrison 0763

FURNISHED

7 rooms, 1st floor apartment; possession Oct. or Nov. 1st; \$125.
9 room brick house; 3 baths; heated garage; \$250.
11 room house; exclusive neighborhood; \$350.

UNFURNISHED

11 room house; 4 baths; near lake; \$250.
9 room brick house; 3 baths; ravine lot; \$250.
7 room house; brick; new; 2 tile baths; \$240.
7 room Colonial house; 2 tile baths; attic; garage; \$175.
8 room house; 2 baths; near lake and schools; \$150.
9 room house; 2 baths; near lake and schools; \$140.
6 room house; new; 1 bath; near schools; \$135.
6 room house; new; 2 baths; \$120.
4 room cottage; 1 bath; \$50.
4 room cottage; 1 bath; \$40.

FOR SALE
Several Bargains
Homes and Vacant

HYDRO POWER NOT CHEAPER ELECTRIC

ACCORDING TO AUTHORITY

Editor of 'Electric World Says Popular Idea Not Upheld By Facts; Addresses U. S. Chamber

The popular belief that electricity produced by water power is necessarily cheaper than steam-generated current must be changed in the light of the increasing steam generating plants, declared W. H. Onken, Jr., editor of the Electrical World, in a recent address before the United States Chamber of Commerce.

"There are very definite limits to the ability of water power to compete with steam power. The actual cost of electricity at the power house is only a small item in the total cost of the service, which must include all costs of transmission and distribution," he said.

"A steam station can be erected at any place where fuel can be readily secured and where large quantities of water are available for condensing purposes. In the case of water power, the energy must be developed where nature provides the water, and if the location is too far from possible markets, it may be cheaper to erect a steam power station. In such a case that particular water power site will remain unharnessed until its power can be used economically as part of a power reservoir in a large interconnected system.

"Steam station production costs at a water power site are competitive with water power costs in many instances. If, as is usually the case, the costs created by transmission

lines are added to the water power costs, the total water power costs at points of use are as a rule greater than those involved in building and operating steam stations at the points where the load exists.

"The opportunity for future hydro-electric development is as great as ever, but the development of large steam and water power plants, and the improvements made in the transmission of power have raised new problems as to the most economical method of operation.

"New power projects must hereafter be studied in combination with existing power plants, and the ultimate development of our water powers involves interconnection of existing stations if maximum use is to be made of them and if the developments are to be profitable."

AUGUST WAS BIGGEST MONTH IN NASH OUTPUT

Previous Records for 30 Days Broken in Shipment of Motor Cars

August was the biggest single month in the history of the Nash Motors company. All previous records since the establishment of the company were swept aside during the month just ended and when the books were closed they revealed shipments of 18,027 cars while orders for August delivery totaled 20,201. This new high record following that of the previous month, which made it the biggest July in Nash history, is regarded by officials of the company as an overwhelming endorsement of the three entirely new series of cars introduced by Nash on June 28.

"We feel that the August sales record is an eloquent expression of what the automobile buying public thinks

of the Nash product," said E. H. McCarty, general sales manager of the Nash Motors company. "At no time since the announcement of the three new series of Nash cars has the factory been able to ship cars in quantities sufficient to meet the demand. At the end of the first month the factory was oversold and now, at the end of the second month, we are going into September again oversold in spite of increased production."

The new Nash line is composed of three series of cars in four wheel-base length. All are sixes and all are equipped with 7-bearing crankshaft motors.

ELECTRICAL BUSINESS BAROMETER OF PROGRESS

The last month of the first half of this year found American industry as a whole in an unusually healthy condition, according to financial authorities throughout the country. The

usual seasonal decline in production appears to have been minimized in comparison with other years. Some industries have actually increased production for the summer months.

Based on the consumption of electrical energy by some 2,500 manufacturing plants, using a combined total of 14-billion kilowatt-hours of energy per annum, the volume of production during June was 8.4 per cent higher than in June of last year. The reduced rate of activity as compared with that of May was almost negligible. Leaders in industry state that there is every indication that general production for the summer period will hold up better than in any similar period since the war.

Of course they now smoke cigarettes and wear trousers but we will never believe that women have attained full equality until they start chewing tobacco.

FOR SALE

A wooded ravine lot between the lake and Sheridan road. 109 ft. frontage. \$8700.

FOR SALE

Just being completed—Six room stucco house, Spanish type, well built, attached garage. \$5000 cash buys it.

FOR SALE

Modern 6-room frame house in Deerfield. 2 tile bath; 2-car garage; large lawn.

Harkness Real Estate
17 NORTH SHERIDAN ROAD
Phone H. P. 1769

Do You Need Money?



I have private funds to loan on 1st and 2nd mortgages. Give full details in first letter. Address Box 759, Ravinia, Ill.

W. W. REICHARDT
Phone Highland Park 444
388 Central Avenue.

Real Estate FOR RENT

Furnished rooms with bath on the east side in a very desirable neighborhood. Close to schools, transportation and lake. Maid service included. For further information see W. W. REICHARDT, 388 Central ave., or Phone H. P. 444.

FOR RENT

3-room apartment, furnished or unfurnished in a very desirable neighborhood on the east side. Suitable for young married couple or some one desiring a studio. South exposure. N-w and up-to-date. Close in and near lake. An unusual opportunity. See W. W. REICHARDT, 388 Central Ave., or call H. P. 444.

ALCYON

THEATRE
HIGHLAND PARK

FRI. & SAT. Now Playing SEPT. 9 & 10

ROD LA ROQUE
DOLORES DEL RIO
"RESURRECTION"

SUN., SEPT. 11 One Day Only

DOLORES COSTELLO
Greatest triumph
"HEART OF MARYLAND"
STAGE SHOW

Week commencing
MONDAY, SEPT. 12
COMBINATION
VALENTINO
and
MASTERPIECE REVIVAL WEEK

MONDAY, SEPT. 12
RUDOLPH VALENTINO
"FOUR HORSEMEN OF
THE APOCALYPSE"
The original 12 reel sensation

TUESDAY, SEPT. 13
DOUGLAS FAIRBANKS
"THE THREE MUSKETEERS"
Original 12 reel production

WEDNESDAY, SEPT. 14
"THE VOLGA BOATMAN"
11 reels

THURSDAY, SEPT. 15
2—Great Ones—2
HAROLD LLOYD
"THE FRESHMAN"
and
MAE MURRAY
"THE MERRY WIDOW"
Funniest of all 6 reel comedies and
finest of all 9 reel features

FRIDAY, SEPT. 16
RUDOLPH VALENTINO
LOIS WILSON, BEBE DANIELS
LOWELL SHERMAN
DORIS KENYON
"MONSIEUR BEAUCAIRE"

SATURDAY, SEPT. 17
First time ever shown on the North Shore
A new release First National Special
KEN MAYNARD
"THE RED RAIDERS"
STAGE SHOW
Customary incidental reels with above pictures. Entire change of show each day.
—Coming—

SUNDAY, SEPT. 18
LON CHANEY
"THE UNKNOWN"

PEARL

THEATRE

GIFT NITE FRIDAY

3—BIG ACTS OF VODVIL—3
SATURDAY AND SUNDAY

SATURDAY, SEPT. 16
RUTH MIX
"THAT GIRL OKLAHOMA"
3—ACTS VODVIL—3

SUNDAY, SEPT. 17
Famous THUNDER Dog
"SILENT AVENGER"
3—ACTS VODVIL—3

MONDAY, SEPT. 18
JOHNNY HINES
"ALL ABOARD"

TUESDAY, SEPT. 19
JACK PERRIN
"THE RIDIN' GENT"

FRIDAY, SEPT. 22
HARRISON FORD & PHYLLIS HAYES
"NO CONTROL"

FRIDAY, SEPT. 23
BOY STEWART
EXTRA BIG GIFT NITE

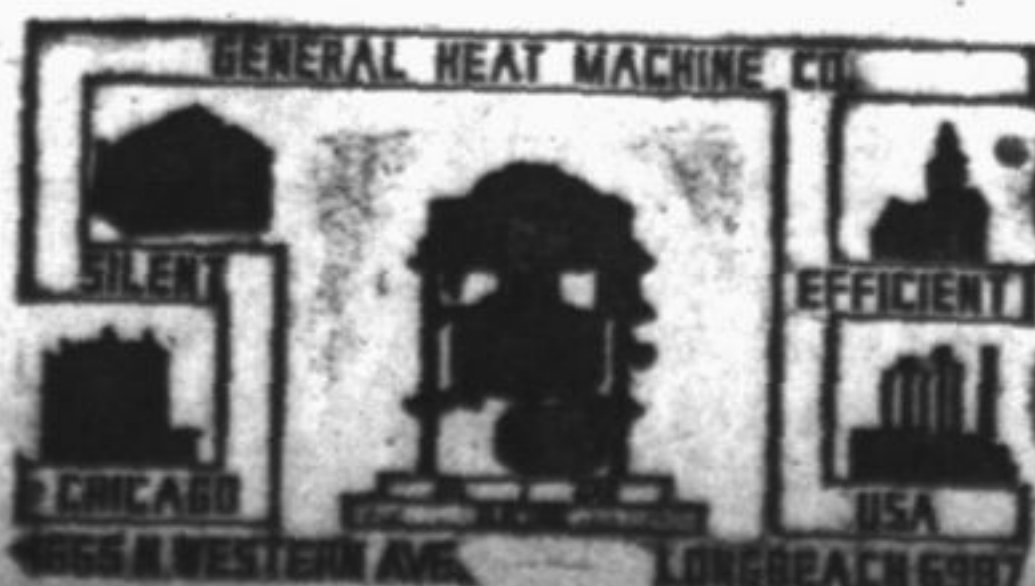


OIL IS HEATING THESE BUILDINGS FOR LESS THAN COAL

With Type S-E Oil Heat Machine

GENERAL HEAT MACHINES

Will Economically Heat Your Building With Any Grade Oil



Winnetka 725 Oak St. Phone 3013

For Fuel—Use Oil

Handling the following grades of heating oils:

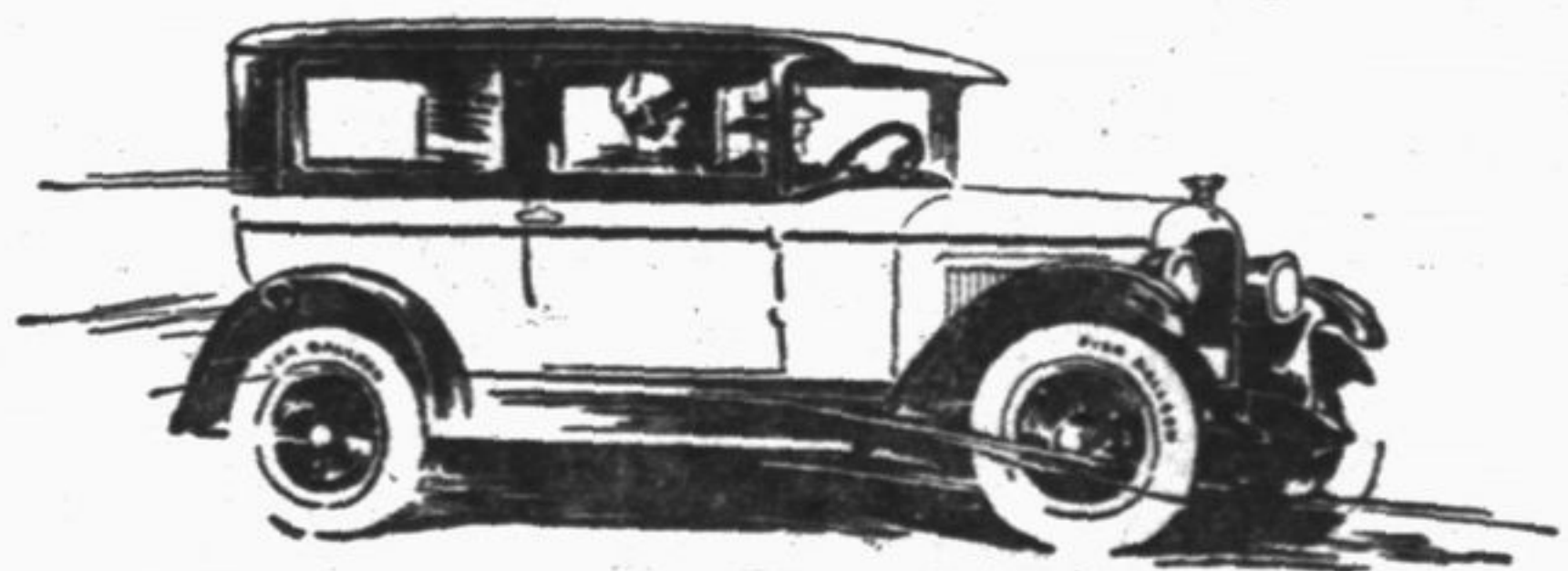
18-20 Fuel Oil—28-30 Fuel Oil
30-32 Fuel Oil—32-36 Gas Oil
38-40 Light Straw Distillate

Braun Bros. Oil Co.

of Highland Park

Telephone Highland Park 3290

Today's trend shows Whippet's tremendous influence



Public Preference Has Swung to this Modern Light Car of Proved Superiority

With more than 120,000 Whippets in the hands of enthusiastic owners, and the popularity of this modern car increasing everywhere, other makers now must follow Whippet's lead.

Whippet set a wholly new standard of economy and introduced such big car features into the light car field as 4-wheel brakes, lower center of gravity, higher speed, increased roominess and force-feed lubrication.

Even a short ride in a Whippet will demonstrate the car's remarkable qualities—flashing acceleration, great power on hills, high speed, easy riding, convenient handling and increased safety.

Superior Quality—New Low Prices

	Whippet Without 6	Whippet 6	Whippet Without 8	Whippet 8
Coach	\$625	\$795	\$625	\$795
Touring	625	765	725	875
Roadster	695	825	755	925

Prices f. o. b. factory and specifications subject to change without notice. Whippet, Overland, Ina, Toledo, Ohio

Whippet

Haak's Auto Supply Co.

512-514 LAUREL AVENUE
Phone Highland Park 237