

OFFERS ADVICE TO DISTANCE TOURISTS

MOTOR CLUB SUGGESTIONS

What to Do and What Not to Do and Much Good Advice on Various Subjects Is Given; Details

With the start of the touring season at hand, the touring bureau of the Chicago Motor club in its latest bulletin offers some advice to long distance tourists.

Proper loading of the car on long trips helps to make for a pleasant journey, according to the bulletin. One of the pet pees of the tourist is to find at the end of a day's travel that a suitcase has rubbed the finish off the body. "Layer upon layer of friction tape, five or six strips stuck on the body where friction may occur, will solve the problem," says the bulletin.

Another Lesson
"Another lesson that the long distance tourist soon learns is that every member of the party should be provided with a rain coat or rain cape, and that these garments should be reached easily at a moment's notice. In addition to this precaution, the tourist who demands comfort on the road will include an umbrella as part of his traveling equipment. The soundness of this advice will be appreciated by the motorist who has been forced to travel all day in wet clothing, because of a drenching received while getting in and out of the car when stopping for lunch.

"In addition to care in loading and in providing suitable comforts the motorist should conduct an inspection of his car before setting out on his journey. Particular attention should be centered upon safety features. Brakes adequate for normal driving may prove entirely incapable of performing up to the standard demanded upon the tour. Another feature that frequently escapes attention is the steering mechanism. Travel on the tour will be faster than one's usual pace. There must be no weakness in the car's steering gear. In addition

to making steering safe, it should be made as effortless as possible, because driving otherwise may prove excessively and needlessly fatiguing.

Engine Important
"Although it is not generally so regarded, the engine is one of the most important safety features of the car. It must be performing at its best to deliver the extra power necessary for long trips at high speed. If one makes certain that carburetion and timing are right, one will have little trouble under ordinary conditions.

"The tires, of course, must be in good condition. Starting out on weak tires may, in some cases, amount to foolhardiness. It is unwise under all conditions to expect old tires to stand up under the grueling work to which they will be submitted on a touring trip.

Excessive Fatigue
"The tourist must watch out at all times that he does not become excessively fatigued. It is better to cut the day's journey short than to risk the dangers encountered when one drives in an exhausted condition.

"Five other points in relation to driving on the tour are summed up by the American Automobile association as follows:

"Making good time is a matter of driving consistently at a reasonable speed. This rate should be neither so fast as to be dangerous nor so slow as to kill the pleasure of the trip.

Observe Road Rules
"Observe generally the rules of the road and show courtesy to other highway users.

"Be alert and keep a firm grip on the steering wheel at all times.

"Make careful note of the danger and caution signs put along the highway for your protection. Pay particular heed to the warning to descend steep grades in low or second gear. These are among the most important caution signs. It is seldom that they are placed where caution is not needed.

"Never leave the car on the highway while repairs, such as tire changes, are being made."

America's army of summer tourists is already on the move. Say a prayer for the poor "Hot Dogs."

HORSE SHOE LAKE NEW STATE PARK

IN ALEXANDER COUNTY

Over 3,000 Acres Acquired by Illinois for Fish and Game Preserve East of Cairo

Purchase by the state of a game and fish preserve and public shooting and fishing grounds of over three thousand acres of land and water in Alexander county was announced recently by Governor Len Small and William J. Stratton, director of the Department of Conservation.

The transfer to the state of 2,000 acres of Horse Shoe Lake and eleven hundred acres of land lying within the curve of the lake has been completed and work will be started in the near future to make this the finest game and fish preserve and public shooting and fishing grounds in the central west.

East of Cairo
Horse Shoe Lake preserve, as this tract is known, is located twelve miles northeast of Cairo, Illinois. It is about two miles from the Mississippi and six miles from the Ohio river. The recent unprecedented floods have not reached this spot so that it seems safe to predict that there never will be any danger of high waters interfering with the quail, wild turkey and other upland game with which the eleven hundred acres will be stocked. A similar preserve and public shooting and fishing grounds of 1700 acres was purchased recently in Woodford county.

Under the provisions of the game and fish codes passed by the 1923 general assembly, all money received by the department of conservation from hunting, fishing and trapping licenses is set apart in a special fund. All the money in this fund is to be used for the necessary expenses of the department and the purchase of

land for preserves and public shooting and fishing grounds, purchases and distribution of game birds and eggs, rescue and distribution of fish and establishment of fish hatcheries.

Important Phase
The establishment of forest, game and fish preserves and public hunting and fishing grounds is one of the important phases of the game and fish restoration program now being carried out by Governor Small and director Stratton of the Department of Conservation.

The outstanding feature of this program is that all of these expenses are paid by revenue from hunting and fishing licenses without one cent of direct taxes.

GEORGIAN BAY REGION FINE FOR VACATIONS

The beautiful Georgian bay region, secluded but not exclusive, welcomes those seeking recreation in the summer playgrounds of the Great Lakes. Dotted with pine-covered islands, of wondrous fantastic shapes, Georgian bay is one of the scenic gems of the lake country. Many travelers, attracted by the quaint charm of hospitable Canadian villages, overlooking the bay, find here the choicest hotel accommodations or the most rugged outdoor equipment. The cool, deep waters yield an abundance of fish; the pine and balsam laden air is tonic; the scenery charming.

Here is an out-of-the way place not overrun by tourists. Those, whose limited time does not permit lingering, may continue their great lakes cruise to Buffalo, where steamer lies in port one entire day, giving passengers the opportunity to visit Niagara Falls. Calls are also made at Mackinac Island, Cleveland, Detroit and Parry Sound, Canada.

Georgian Bay 30,000 islands, stretching for many miles along Canadian shores, is now directly accessible from Chicago by steamers North American and South American, lake going liners, that are the last word in marine elegance.

WANTED

Donors For Blood Transfusion

Any healthy person between 18 and 40 years of age will be examined free and blood typed. **THOSE USED WILL BE PAID AT THE RATE OF \$50.00 PER QUART** or less of blood given. For full information and appointment, apply to Dr. Crossman, Highland Park Hospital. Phone Highland Park 2550.

The Highland Park Hospital

Main Entrance—Homewood Avenue, two blocks west of Green Bay Road

Join Our Christmas Savings Club

AND SAVE THROUGHOUT THE YEAR

Save Your Money NOW — Save Regrets Later!

"The Community Bank"

AIMS TO GIVE FRIENDLY SERVICE AT ALL TIMES

Let Us Serve Your Wants with a Savings Account Safety Deposit Box Insurance A Handy Checking Account

"WE'RE GROWING DAILY — GROW WITH US"

Highwood State Bank

HIGHWOOD ILLINOIS Phone 251

Open Saturday Nights, 6 to 8

Permanent Waving

Keen Steam Oil Process



Why go to Chicago for a permanent wave when you can get the finest kind right here at home. Don't wait until the hot weather sets in. Now is the right season. If you want fingers, combs, water waves or marcel waves, phone Highland Park 1990 for an appointment.

SPECIAL PRICES FOR PERMANENT WAVING

We Cut the Very Latest Bobs

You will have absolute privacy in our beauty and hair cutting parlor.



MARCELLING WATER WAVING HAIR BOBBING FACIALS MANICURING HAIR DYEING SHAMPOOING SCALP TREATMENTS

Call and Make Your Appointment for Permanent Waving—early mornings or evenings For Ladies and Children Only

D. L. Mustric Beauty Shoppe

Room 8-9 New State Bank Building — Upstairs Phone Highland Park 1990

For Economical Transportation



Hour after Hour over any Road -and always in Comfort!

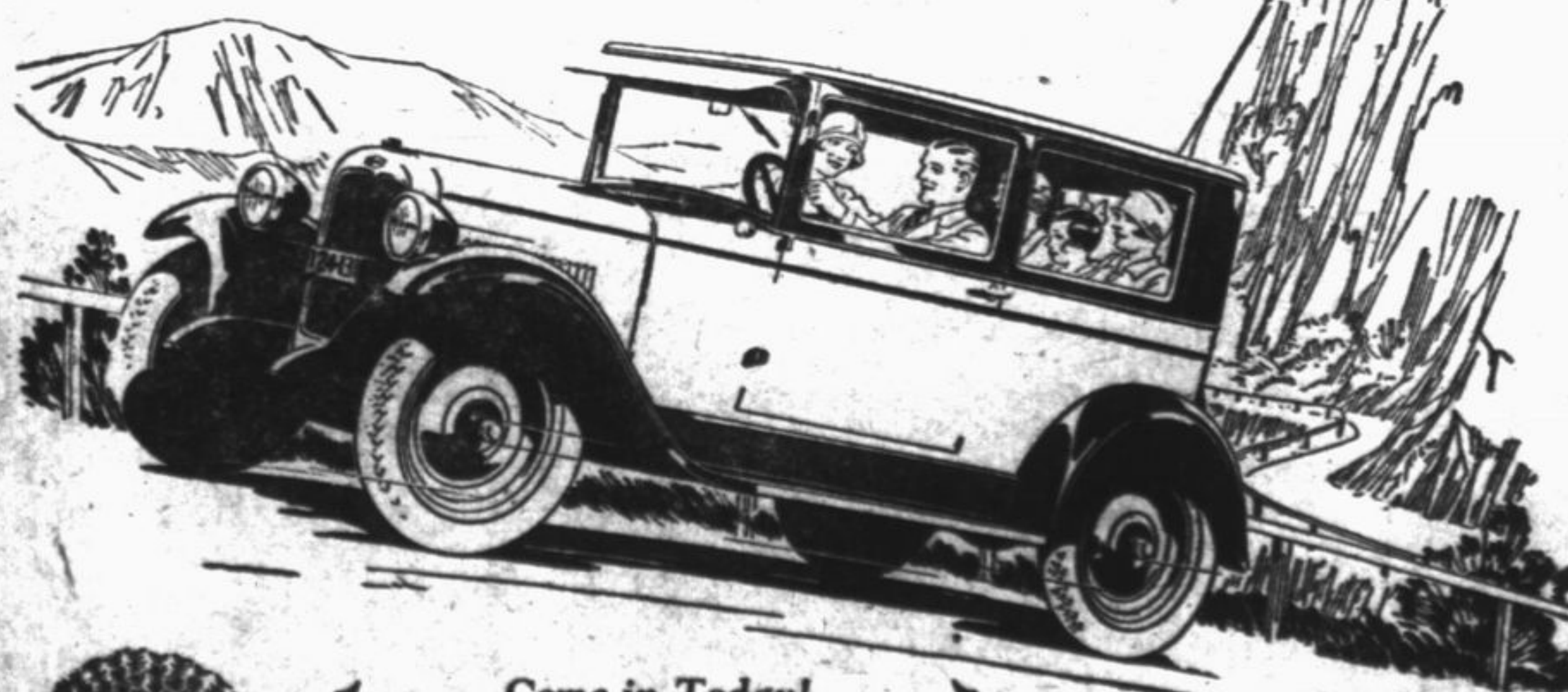
Scientifically balanced—swung low to the road—and with the body resting on chrome vanadium steel springs that are 88% as long as the wheelbase—the Most Beautiful Chevrolet provides the most astonishing riding and driving comfort ever offered in a low-priced car.

At every speed up to wide open throttle, it holds the road with a surety that is a revelation—while rough stretches are negotiated in perfect comfort. You can drive for hour after hour, mile after mile, over any road, without the slightest sense of forcing or fatigue.

This exceptional riding and driving comfort has been engineered into Chevrolet cars as a result of the most gruelling road tests ever conducted in connection with the development of an automobile.

Fleets of Chevrolets are constantly under test at the General Motors Proving Ground—driven day and night over every conceivable type of road, from concrete straightaways to deep-rutted clay lanes. Performance results are measured and recorded with scientific accuracy by delicately-exact electrical and mechanical devices—invented and built by General Motors engineers. Every unit of the car has been tested and improved until it contributes its full share of comfort.

We have a demonstrating car waiting for you. Drive it over the roughest road you know. You'll find a type of performance that will delight and amaze you—riding comfort that you never thought possible in a low-priced automobile.



The COACH \$595

The Touring or Roadster \$525

The Coupe \$625

The 4-Door Sedan \$695

The Sport Cabriolet \$715

The Landau \$745

The Special Landau \$780

1/2 Ton Truck \$395

1 Ton Truck \$495

All New Fab Flow Motors

Check Chevrolet Dealer's Prices

They include the lowest financing and financing charges available.



Come in Today!
See for yourself the remarkable beauty of the new Chevrolet. Drive it and get the thrill of its smooth, powerful performance. Then you'll know why each day thousands are buying the Most Beautiful Chevrolet in Chevrolet History.

WM. RUEHL & CO.

120 North First Street

Phone 1110

QUALITY AT LOW COST