

NASH HAS BIGGEST YEAR IN HISTORY

Last year was the biggest year in the history of the Nash Motors company, according to reports issued to dealers.

The Nash advanced six, special six, and light six series, equipped with 7-bearing crankshaft motors and endowed with a wealth of features and appointments, literally took the automobile buying public by storm, during the year just closed, and swept sales 41 per cent ahead of sales for the previous year 1925. In this connection, it is pointed out, another record was established from September 1 to December 31, last, when Nash sales exceeded by 13.8 per cent sales for the same period last year.

Officials of the Nash Motor company are of the opinion that still another sales record will be established by Nash in 1927. New models, just introduced by the company and shown for the first time at the New York automobile show, they believe, will result in decided sales impetus and that the popularity of the Nash line this year will reach greater heights than ever before.

REPORTS SLUMP IN PRIVATE SCHOOLS

There has been a slump in the private and commercial schools of the country during the past three or four years, according to reports issued by the United States Board of Education. Undoubtedly this has been due to the fact that high schools and other branches of the public schools have been broadening their courses along commercial lines.

GOVERNMENT REPORT BACKS UP WATERWAY

With two strong government reports backing the proposed construction by the United States and Canada of a shipway from the Atlantic into the Great Lakes to the St. Lawrence river, it might seem that Congress would put the measure through at the present session. However, Canada which would apparently benefit most by the canal, seems to have cold feet on the proposition.

NOTICE OF AWARDED CONTRACT

NOTICE is hereby given to all persons interested, that bids for the furnishing of all labor, tools and materials necessary for the local improvement of the roadway in Highland Place, Hillside Drive and Roger Williams Avenue by paving with reinforced concrete and otherwise improving, all in the City of Highland Park, County of Lake, and State of Illinois, were opened on the 14th day

of January, A. D. 1927, and Paul Reschke, being the lowest responsible bidder, the contract was awarded to the said Paul Reschke on the 22nd day of January, A. D. 1927.

Said bid for the work is as follows:—

- Items—
- No. 1. 1450 Cubic yards of excavation for pavement and combined curb and gutter, preparation of subgrade, and removal of surplus excavated materials, measured in the cut, at Ninety Five Cents (\$0.95) per cubic yard \$1,377.50
- No. 2. 500 cubic yards of excavation for parkways, including hand raking and removal of surplus excavated materials, measured in the cut, at One Dollar Ten Cents (\$1.10) per cubic yard 550.00
- No. 3. 2650 square yards of concrete pavement . 8 inches thick (measured between edges of combined curb and gutter), 1-2-3 1/2 mix, 42 lbs. of wire fabric per 100 square feet, 3/4 inch asphaltic felt filled cross-joints 30 feet apart, with 3/4 inch round dowel bars, 2 feet long, 2 feet apart, ends greased with 1-inch caps, 10 inches long, with a longitudinal "V" shaped joint of 16 gauge metal, 7 1/2 inches wide, with 3/4 inch round dowel bars, 4 feet long, 5 feet apart, with a trapezoidal joint along each edge of pavement, with 3/4 inch round dowels, 2 feet long, 5 feet apart, painted with an asphaltic paint, cured with 2 lbs. of calcium chloride per each bag of cement, filling longitudinal joints with a bituminous cement; laid complete at Two Dollars Sixty-Five Cents (\$2.65) per square yard 7,022.50
- No. 4. 2500 lineal feet of concrete combined curb and gutter, mix 1-2-3 1/2, with one-half (1/2) inch mortar coat mix 1-2, height 14 inches, width 18 inches, curb 6 inches thick, gutter 8 inches thick; laid complete at Eighty-Five Cents (\$0.85) per lineal foot 2,125.00
- No. 5. 12 catchbasins, mix 1-2-4, inside diameter 4 feet, bottom and side walls 8 inches thick, with 400 lbs. cast iron covers, including all excavation, backfilling around catchbasin with sand; constructed complete at Ninety Dollars (\$90.00) each 1,080.00
- No. 6. 40 feet of 12-inch drain, average cut 5 1/2 feet, sand backfill,

- 78 lineal feet of 10-inch drain, average cut 4 1/2 feet, earth backfill, open joints, including all excavation and removal of surplus materials, laid complete at One Dollar Twenty-Cents (\$1.20) per lineal foot 780.00
- No. 8. 650 lineal feet of 10-inch drain, average cut 4 1/2 feet, earth backfill, open joints, including all excavation and removal of surplus materials, laid complete at One Dollar Twenty-Cents (\$1.20) per lineal foot 780.00
- No. 9. 78 lineal feet of 12-inch drain, average cut 5 1/2 feet, earth backfill, open joints, including all excavation and removal of surplus materials, laid complete at One Dollar Forty-Five Cents (\$1.45) per lineal foot 113.10
- No. 10. 251 lineal feet of 15-inch drain, 4-foot cut, open joints earth backfill, including all excavation and removal of surplus materials, laid complete at One Dollar Seventy-Five Cents (\$1.75) per lineal foot 439.25
- No. 11. 1 concrete headwall, 9 feet long, 6 1/2 feet high, top width 15 inches, bottom width 3 feet, mix 1-2-4; including all excavation and removal of surplus materials, constructed complete at One Hundred Ninety Dollars (\$190.00) 190.00
- No. 12. 5 concrete guard posts, mix 1-2-4, mortar coat 1/2 inch thick, 1-2 mix, each post reinforced 3/4 inch square deformed bars, of lengths specified, center post to have pipe for wires; dimensions of posts as specified; installed complete at Fifteen Dollars (\$15.00) each 75.00
- No. 13. 175 square yards of bituminous macadam for pavement connections at Green Bay Road, 12 inches thick, 4 gallons Tarsia per square yard top dressed with 1/2 inch layer of 3/4 inch gravel; including all excavation, removal of surplus materials, and rolling; laid complete at Three Dollars Twenty-Five Cents (\$3.25) per square yard 568.75
- No. 14. 1 tree to be grubbed out, one (1) foot below subgrade, hole

filled with sand, and all rubbish removed, at Eight Dollars (\$8.00) each 8.00

No. 15. 2 covers to be adjusted to line and grade where located, at Five Dollars (\$5.00) each 10.00

No. 16. 20 cubic yards of sand for backfilling in trenches above specified, in place at Two Dollars

Fifty Cents (\$2.50) per cubic yard 50.00

TOTAL AMOUNT OF BID \$15,894.35

The owners of a majority of the frontage of the lots and land upon said streets, wherein said work is to be done, may, within ten days of the date hereof, elect to take said work and enter into a written contract, to do said work at ten per centum less

than the price at which the same has been awarded.

SAMUEL M. HASTINGS,
FRANK L. CHENEY,
WM. M. REAY,
LYLE GOURLEY,
Board of Local Improvements of the City of Highland Park,
Dated at Highland Park, Ill.,
January 27th, 1927.

Craftsmen on guard

Craftsmen, with pride in creating, build Cadillac.

Craftsmen, with pride in guarding that fine mechanism, keep it running sweetly, quietly, powerfully, with unvarying response to your needs—as the builders intended.

Such men we have, long familiar with the Cadillac chassis and body—eager to keep your car always at its best.

Living in this community, you should consider Cadillac community service in your purchase of a car. Because such service—always at hand, to be depended on for regular inspections as well as emergency repairs—increases car value.



CADILLAC SERVICE

CADILLAC MOTOR CAR COMPANY
EVANSTON BRANCH
1810 Ridge Avenue, Evanston
University 8600 • • Rogers Park 9132

Correct Glasses

A thorough examination of your eyes at regular intervals is an assurance of good vision.

Modern methods and years of experience assure you the best results.

Phone for an Appointment

Drs. Bersch and Stone
OPTOMETRISTS

1177 Wilmette Ave., Wilmette Phone Wilmette 2766
Residence Phone—Wilmette 3881

Expert Clock Repairing



WE HAVE engaged one of the best clock repair men in the country to give his full time to our work. Years of experience have taught him all the fine points of clock craft, and you may rely on his ability to locate any trouble yours is giving you, and cure its ills quickly. He is an efficient worker and a rapid one.

That old grandfather clock, which has been standing idle in your hall, or been stored away in the attic, will take a new lease on life if turned over to him. And he is equally qualified to repair the smaller ones.

Clocks Called For and Delivered When Desired

PAUL DAVEY
JEWELER

1165 Wilmette Ave. WILMETTE Phone Wilmette 6



February Green Tag Clearance Sale

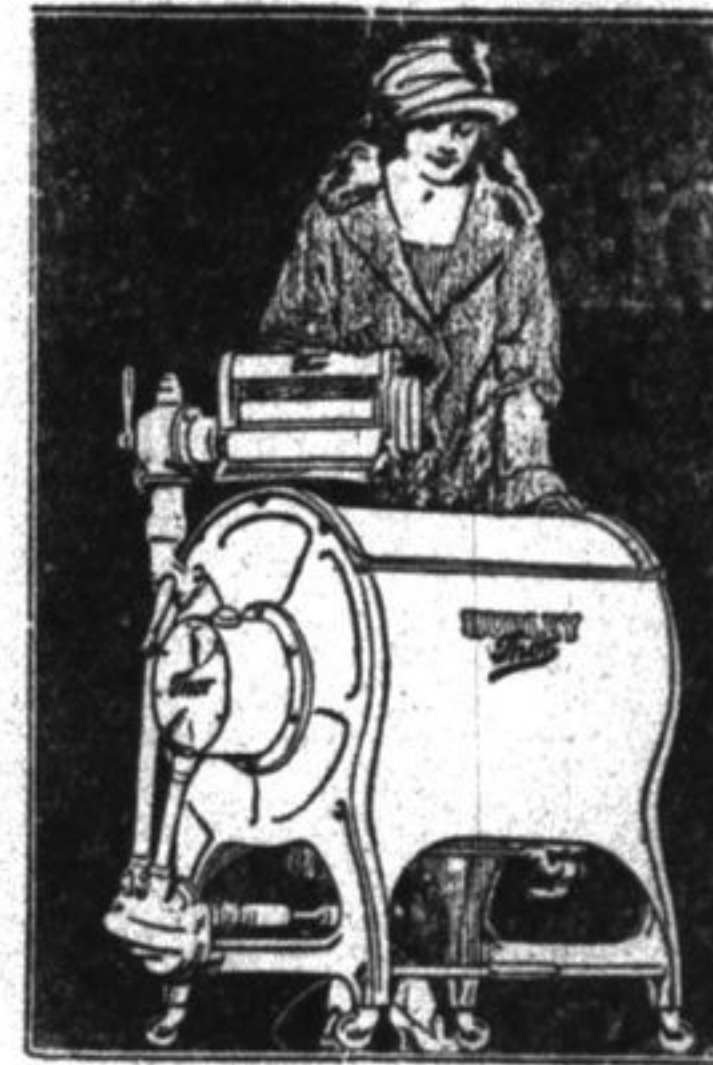
OF GAS-BURNING APPLIANCES

FEBRUARY 1st - FEBRUARY 28

Look for the Green Tag and Special Price and Easy Terms on These Appliances



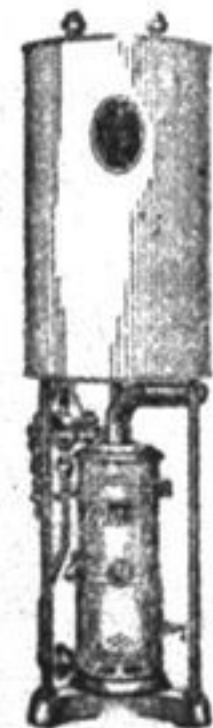
"LORAIN" OVEN HEAT REGULATOR
Controls your oven heat to any baking you may need.



THOR CYLINDER WASHERS
Clean the daintiest fabrics



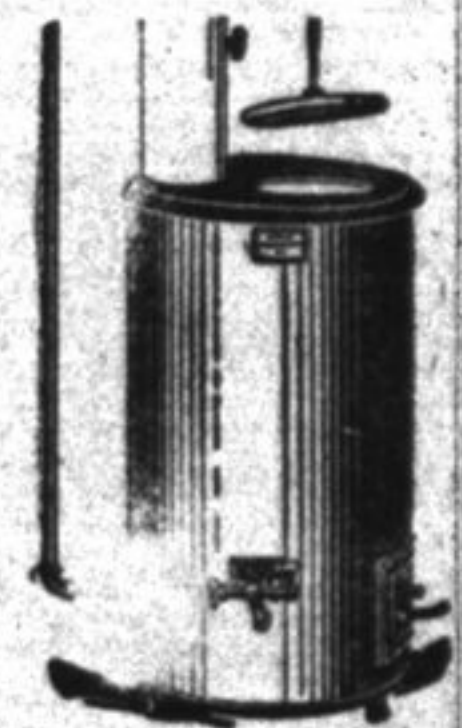
CLARK JEWELL GAS RANGE
"Lorain" oven heat control. Enamel oven linings.



AUTOMATIC STORAGE WATER HEATER
A supply of hot water for your every need at all hours.



THOR GAS HEATED IRONER
Makes ironing day a pleasure



HOME INCINERATOR
Save space. Burn your garbage and rubbish in this gas-fired Home Incinerator.

The Logical Place to Buy Gas Burning Appliances
NORTH SHORE GAS CO.
TELEPHONE HIGHLAND PARK 194