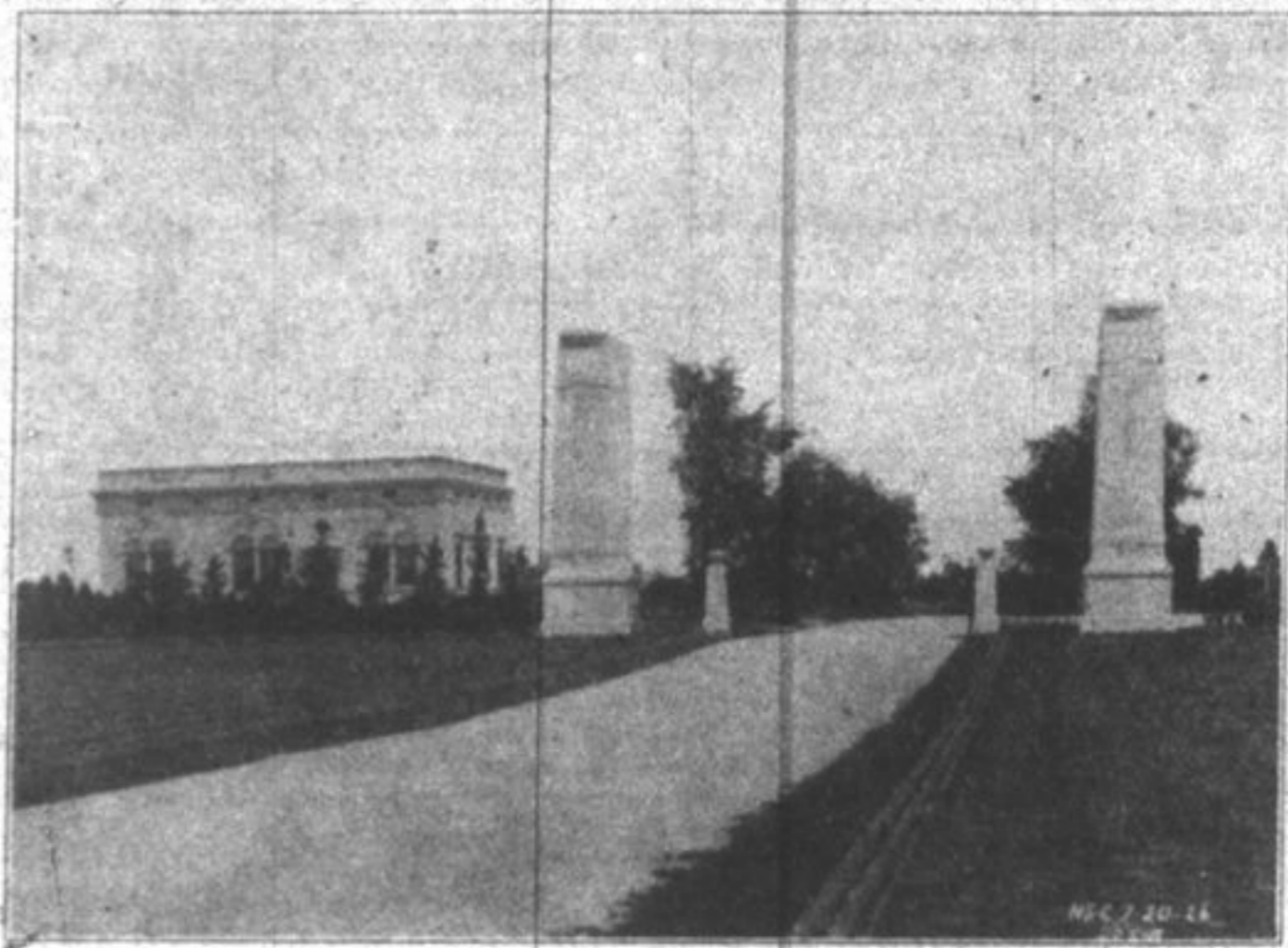
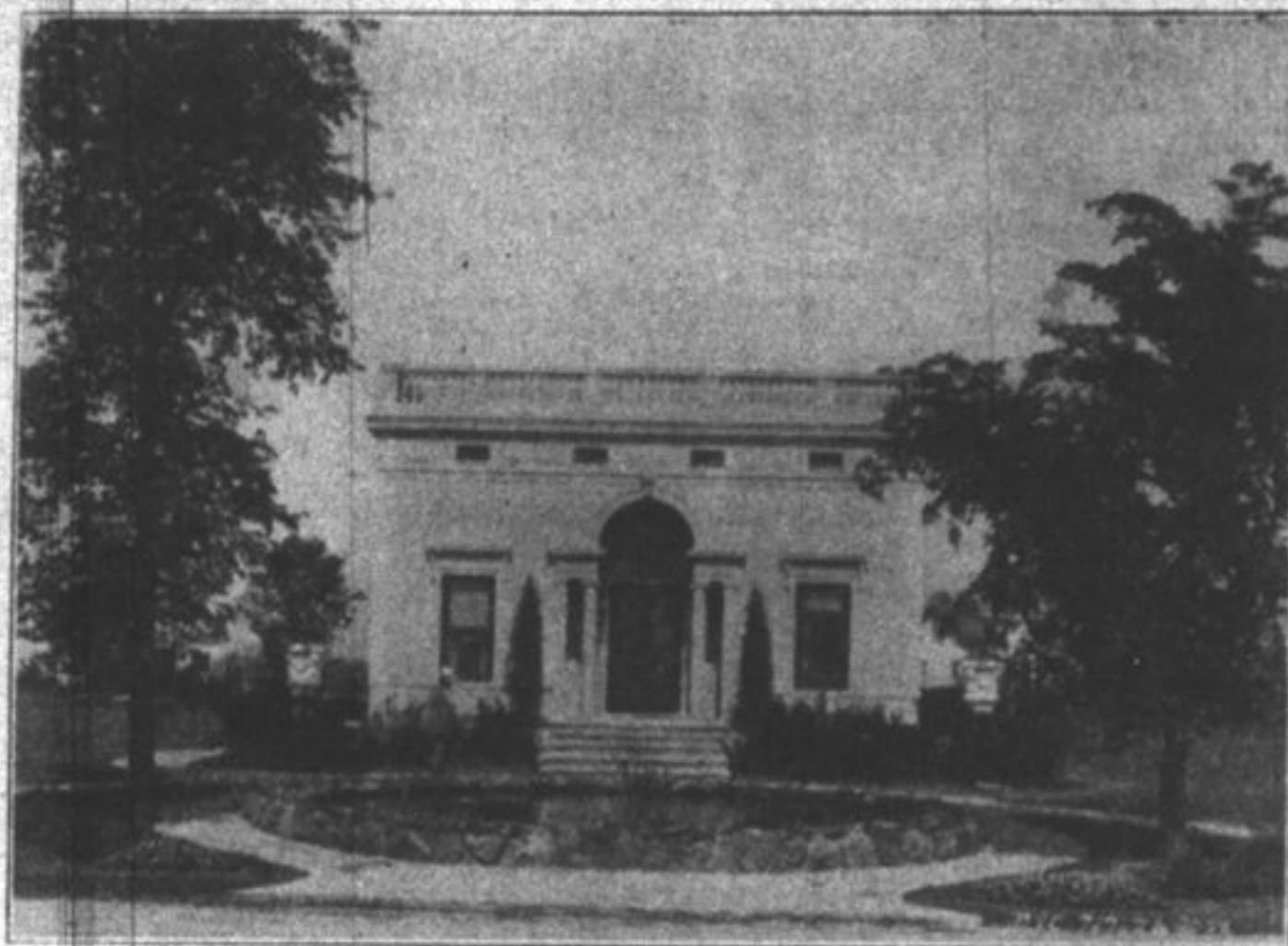


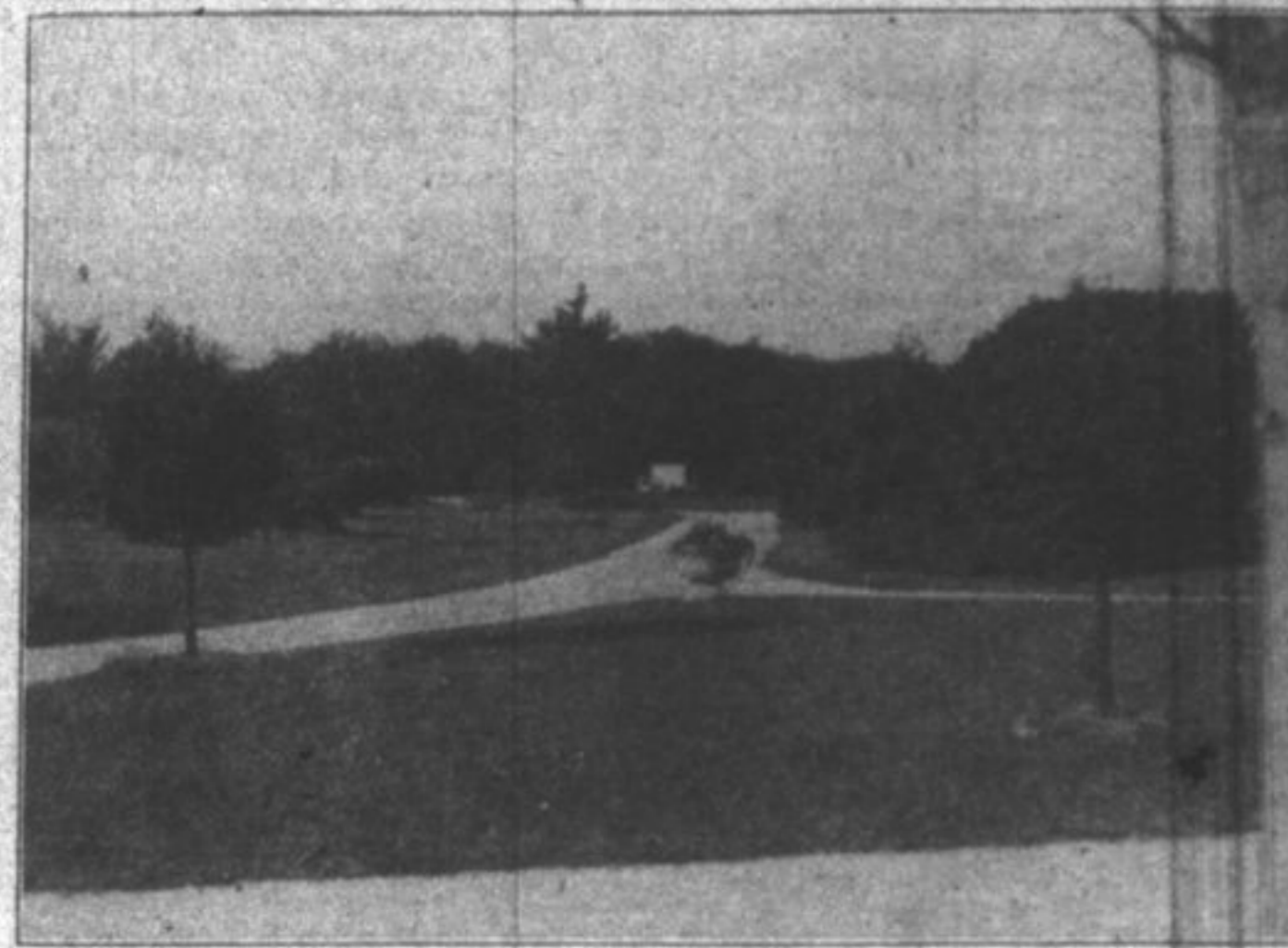
# RECORD OF ACHIEVEMENT of a North Shore Institution



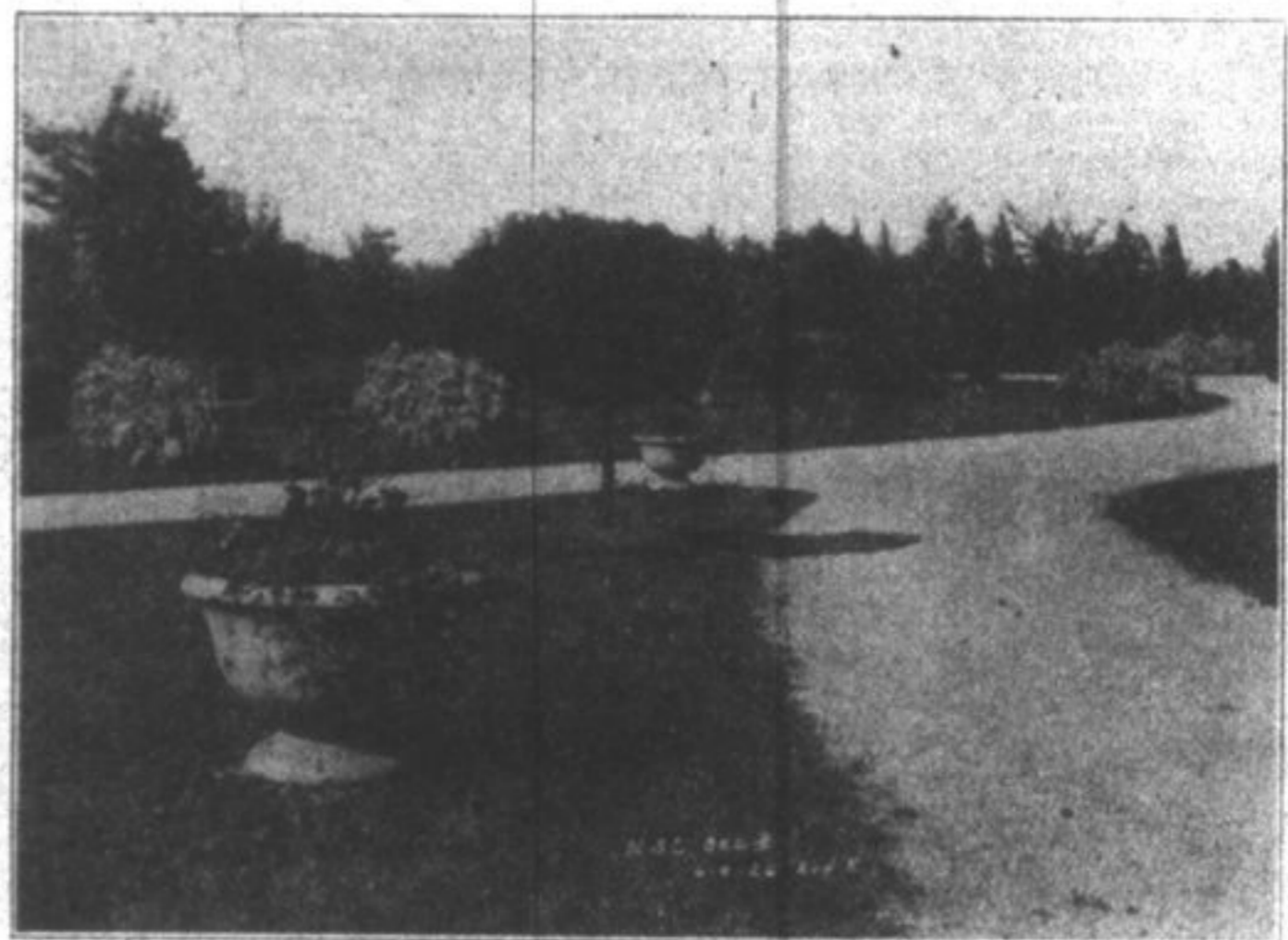
ENTRANCE PARK of North Shore Cemetery is in front of the entrance gates. It is 200 feet deep from the intersection of 18th street with the Green Bay road. The width is 175 feet including a scrupulously kept 24 ft. white driveway which is a portion of the main driveway of the cemetery. The massive pylons of everlasting Mt. Airy white granite are 35 ft. high and form a landmark for many miles around. It is now well known that this is the most artistic and imposing American cemetery entrance.



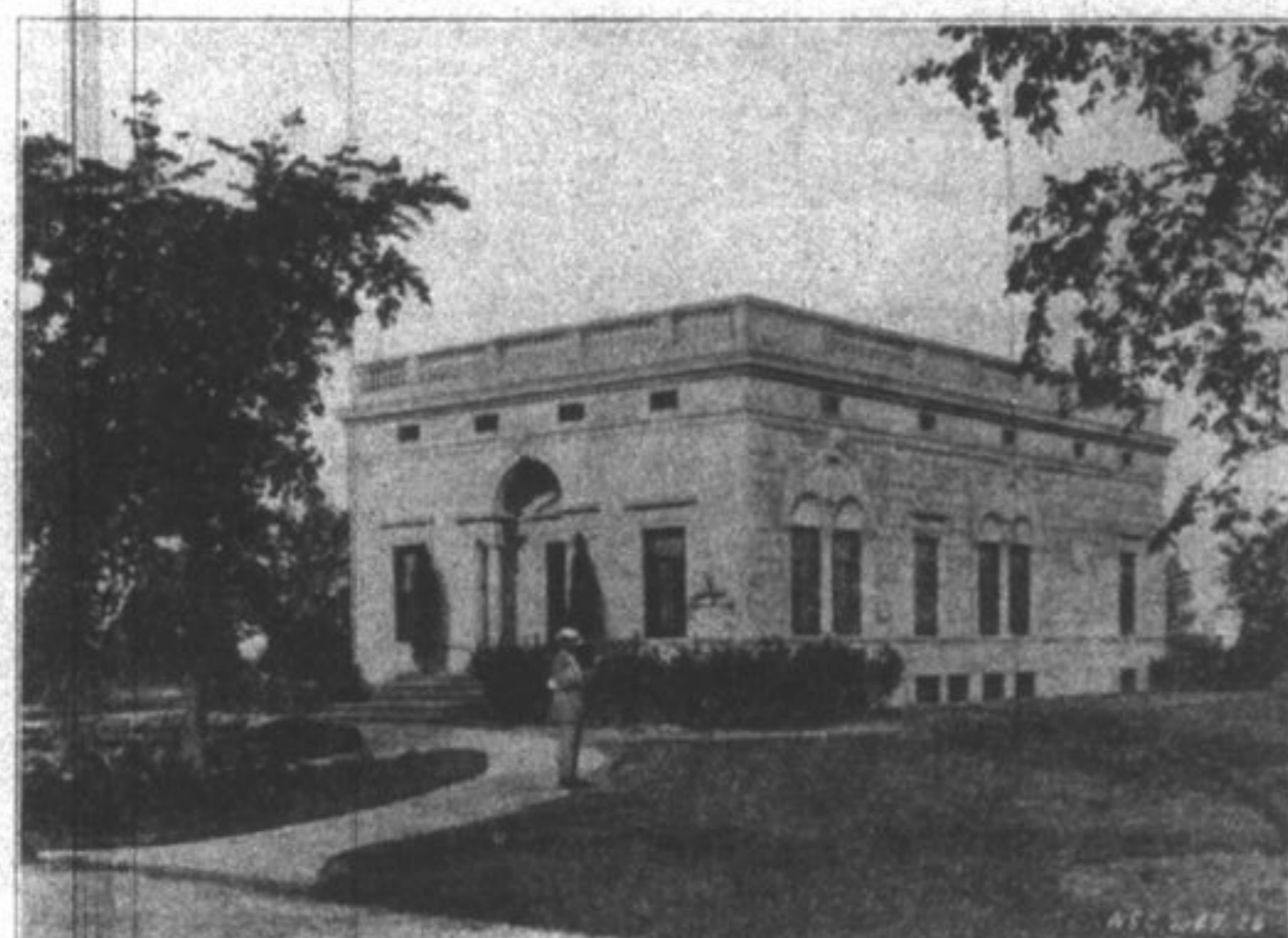
This is the most pleasing approach to a cemetery ADMINISTRATION BUILDING in this country. The exterior of the building is a replica of the Studio of Mrs. Harry Payne Whitney, the noted American Sculptress. The water lily and gold fish pool in front is a true circle in form and 25 ft. in diameter. It contains several varieties of exquisitely beautiful lily and lotus plants which bloom all summer, and upwards of 100 goldfish. This aquarium is surrounded and finished in attractive rockery effects with cute pockets in which miniature blooming plants are grown.



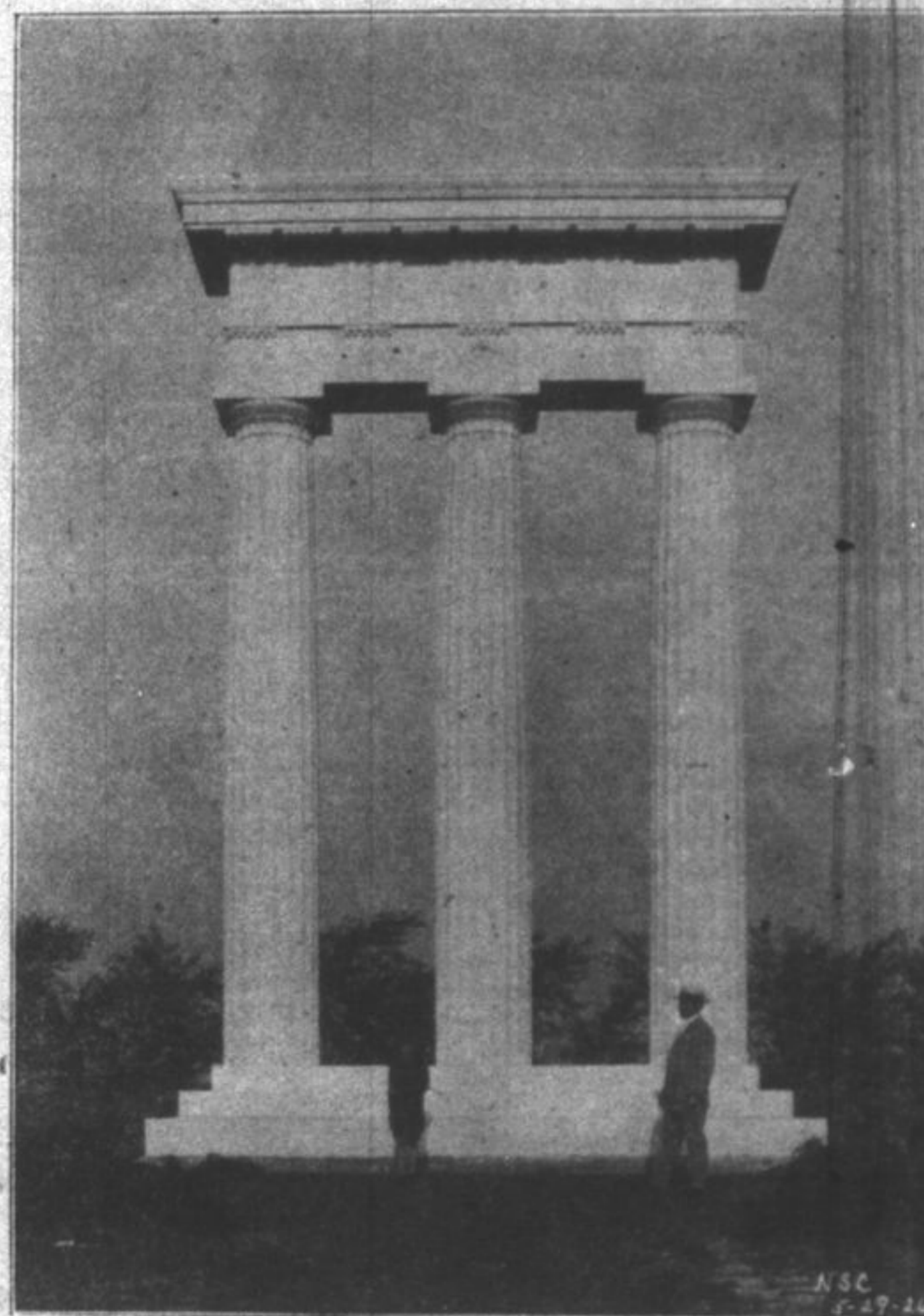
Two GLOBE-TOPPED ELMS, one urn, white driveway, landscape glimpses, with Marshall monument in the distance.



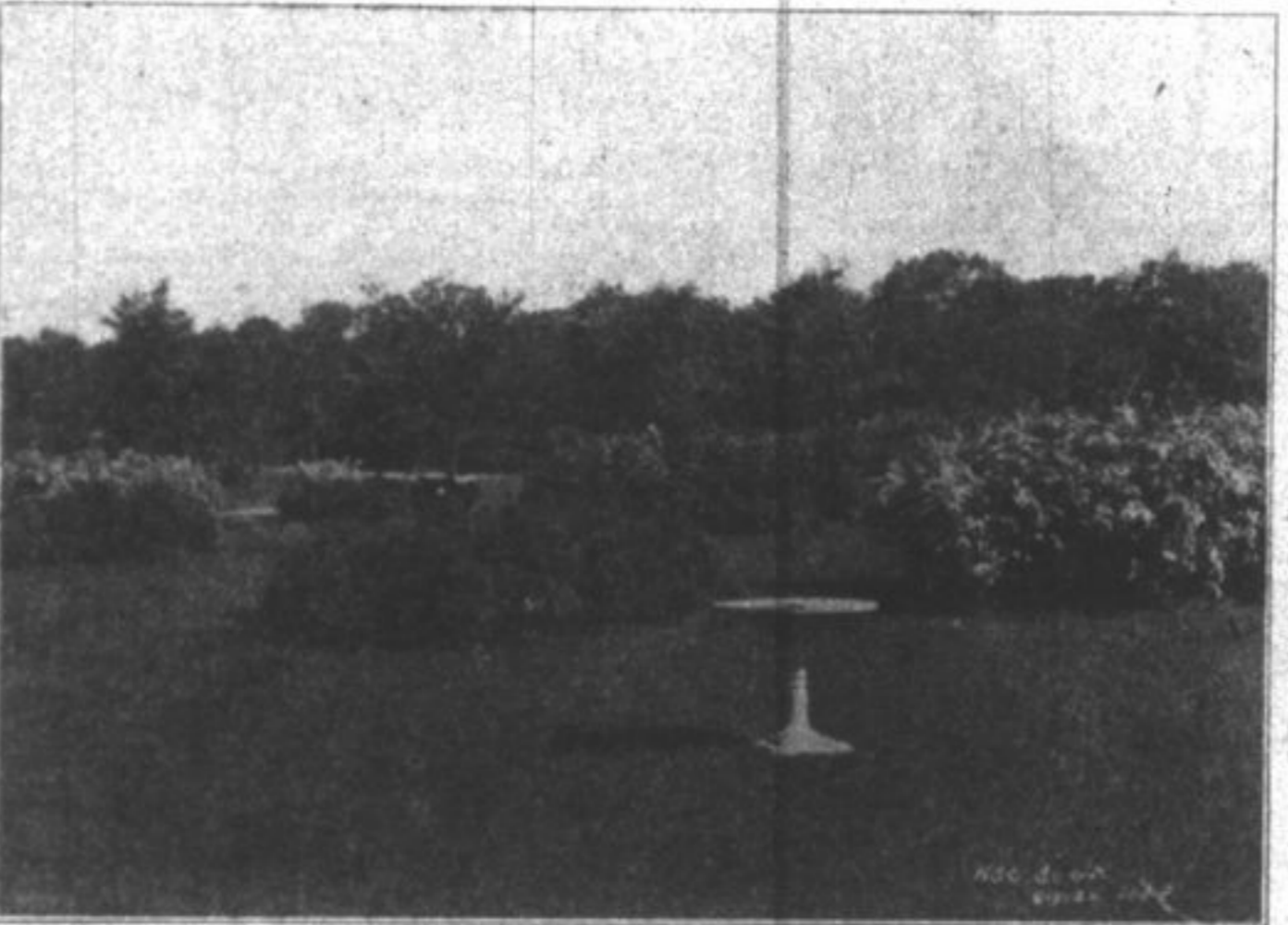
Such charming URNS are unique in cemetery ornamentation. After several days were spent in studying urns and searching for designs these were specially designed. They are on the three points of a triangle. White globe-topped elms are on the side lines, the center of the triangular lot being kept open. Blooming, colored and hanging plants grow within the urns while plantings in colored effects surround the urns on the ground.



A quartering view of the ADMINISTRATION BUILDING showing one of the curved rockery walks leading from the easterly entrance to the main driveway. Both ends of the building are alike but the walk plans are not alike and there is no aquarium on the westerly front. Two fine groups of Fitzer's juniper and two groups of Spiraea Van Houttei help to make the unrivalled picture formed by the easterly front.



The finest MASONIC MONUMENT in any American cemetery. It is composed of 84 tons of Mt. Airy white granite, is 35 ft. high, contains the emblems of the order on the Easterly side of the architrave and the inscription "TO THE GLORY OF ALMIGHTY GOD AND IN MEMORY OF THOSE WHO HAVE PASSED THE UNSEEN PORTALS" on the Westerly side. This exceptionally artistic and imposing memorial is happily located in the center of the Masonic Section which slopes appropriately to the East.



BIRD BATH and drinking fountain. We have several of them and they are much appreciated by our feathered friends. We have seven varieties of Spirea, six varieties of Lilacs and forty other varieties of blooming shrubs, some of which appear in this picture.



Glimpses of the big Entrance pylons, of the Administration Building, of a small portion of beautiful Section A, of a white driveway and of fine elm trees. NORTH SHORE CEMETERY is a veritable arboretum, as it contains upwards of seventy varieties of trees and more than fifty varieties of blooming shrubs.



A Lot in NORTH SHORE CEMETERY. Nowhere else can such a beautiful sight be found on a single cemetery lot. The white bloom is in the rear of the lot while other blooming shrubs are on the lot lines on either side. This makes a beautiful, exclusive private place of a cemetery lot, heretofore unknown anywhere. North Shore Cemetery has many such lots.



A fine MONUMENT on a lot the front of which is on a white driveway, the other three sides being planted to blooming shrubs. A large oak tree forms part of the background of this lot. Only a portion of the rear planting and a portion of the planting on one side is here shown.

## Words of Appreciation

(Extract from one of many letters)

Dear Mr. Western:

You have my hearty congratulations upon your great success in making for the North Shore the finest place of human interment in the country in the short period of nine years. I am pleased to reflect that I bought a lot in NORTH SHORE CEMETERY five years ago. I knew a man whose dying request was that he should be buried in NORTH SHORE CEMETERY but who neglected to buy a lot in his life time although able to do so. His family ignored his request and buried his remains in a repulsive looking place, all signs of which will be obliterated from the face of the earth in a few years hence.