

HOW GREAT CROWDS ARE MOVED TODAY

ON THE NORTH SHORE LINE

Six-Car Trains Operating Two Minutes Apart; 8 Tons Hot Dogs Bought to Feed the Multitude

Arrangements have been completed by the Chicago North Shore and Milwaukee railroad—the North Shore Line—to handle the throngs which will journey to Mundelein today, for the final ceremonies of the International Eucharistic congress at St. Mary of the Lake.

More than 850,000 persons—of all nationalities and ages—are expected to be on hand for the great procession, which will mark the end of the greatest assemblage of persons for one event in the history of the world.

300,000 by Automobile
Of this number at least 300,000 will reach Mundelein by automobile, according to the best estimates available. The other 350,000 must be transported by electric and steam railroads.

The North Shore Line will bear the brunt of this transportation problem—the greatest in the annals of the railroad industry.

Over the tracks of the North Shore Line, high-speed electrically operated trains will carry more than 300,000 at closest estimate.

North Shore Line rolling stock has been augmented for this great task on June 24 through the leasing of 923 cars from the Chicago Rapid Transit company.

Six-Car Trains

The throngs going to Mundelein from Chicago will be carried in six-car trains operating two minutes apart, starting at 4 o'clock in the morning and continuing until all have been transported to and from Mundelein. Trains will start at the Jackson Park and Loomis street terminals, proceeding through the loop to Howard street, when they will continue to Mundelein over the new Skokie Valley route.

All regular North Shore Line service between Chicago and Milwaukee on June 24 will be over the Shore Line route, leaving the Skokie Valley route open exclusively to Eucharistic congress trains.

Extensive preparations have been made to handle the thousands who will

go to Mundelein that day from Milwaukee, Racine, Kenosha, Waukegan, and other northern points along the North Shore Line.

Mundelein trains will be entering the terminal at the rate of one every 40 seconds. The Chicago-Mundelein trains will be two minutes apart. Between these will come the "shuttle" trains from Lake Bluff. To insure speedy and efficient operation of trains in and out of the Mundelein terminal, arrangements have been made to direct traffic from an overhead bridge spanning the network of tracks.

No trouble or expense is being spared by the North Shore Line in preparing for this great occasion. An indication of the determination of North Shore Line officials to do everything possible to insure comfort and convenience for the great throng is seen in the fact that a huge lunch stand has been erected at the terminal, where North Shore personnel will help feed the multitude. The extensiveness of preparations in this special feature of North Shore Line service on June 24 is shown by the one item of eight tons of "hot dogs" ordered for this one day.

To remove the possibility of traffic congestion, which would result if 350,000 persons tried to "catch the first train" back home after the Eucharistic procession, the North Shore Line has arranged to present band concerts and show motion pictures while the crowds await their turn for boarding trains. A large stockade has been built, permitting only a certain number to reach the loading platforms at one time. North Shore Line officials urge all those present at the final ceremonies to assist them in their great task by taking their time and moving in orderly procession during the homeward trek.

REAL ESTATE TRANSFERS

Maud A. Lamond and husband to B. Wahlman. QCD \$1. Pt of lot 47, orgl plat of Highwood.

Bertha Wahlman to Lillie E. Wahlman. WD \$1. Pt of lot 47, orgl plat of Highwood.

Bessie Lowenmeyer to M. L. Hamilton and wife jt tens. WD \$10. Lot 57, Ravinia Forest, Sec. 21, Shields.

Bessie Lowenmeyer to M. L. Hamilton and wife jt tens. WD \$10. Lot 44, Second Ravinia Forest.

C. M. Leonard to W. W. Ahlaschlager. WD \$10. Pt of Sec. 30, Shields.

D. I. Dunn and wife to K. E. Koch and wife jt tens. WD \$10. Lot 13, blk 6, Ravinia Highlands.

D. I. Dunn and wife to S. Schoenwetter. WD \$10. Lot 10, blk 6, Ravinia Highlands.

N. Brandonisio and wife to G. W. Glader and wife, jt tens. WD \$10. Lot 13, Oak Glenn Subdn., Sec. 15, Highwood, Deerfield.

Mary L. Coonley and husband to E. J. Brundage and wife jt tens. WD \$10. Pt of lot 16, Sec. 27, Shields.

According to press reports the pineapple trust has been quashed. A pineapple rough.

AUTO LIMERICKS

By WENKEL BROS.



A thoughtful young driver from Kent Took heed how his money was spent And he let us supply Each thing he would buy And he drove on a road called Content.

YOU'LL KNOW CONTENTMENT

If you buy your auto supplies of us. Everything that will add joy to the season's driving—slip covers to dependable tools—greases and oils for YOUR car.

WENKEL BROTHERS Highwood Garage

Expert Ignition and Battery Service
Phone H. P. 254 Waukegan Av.
GENERAL AUTO REPAIRS
Welding - Towing - Supplies



Careful, accurate time-piece adjusting and re-pairing, jewelry resetting and designing. Reasonable charges.



SATISFIED CUSTOMERS are our stock in trade—we couldn't do business without them. We want to keep adding to our list, and invite you to get acquainted with this friendly store and our E. Z. Plan of buying furniture.



U.S. DUFFY FURNITURE CO.
FURNITURE 532%
ON CREDIT CENTRAL AVE.
1666

A Year From Today What will your Car be worth Then? Or in Two Years? Or in FIVE?

These vital questions create no worry in the minds of Dodge Brothers owners.

Six, eight and even ten years of faithful service—with mileage running well into six figures—is not an uncommon record for Dodge Brothers Motor Car.

In fact, 90% of all the cars Dodge Brothers have built are still in service—an astonishing record, when you think of it—and ample justification for Dodge Brothers well known slogan—*Long Life!*

| | |
|-------------|----------|
| Touring Car | \$854.92 |
| Roadster | \$853.82 |
| Coupe | \$906.16 |
| Sedan | \$959.90 |

DODGE BROTHERS MOTOR CARS

A. G. McPHERSON

Highland Park

Phone 120-121

PRESS WANT ADS BRING RESULTS

Light Six
4-Door Sedan

NASH

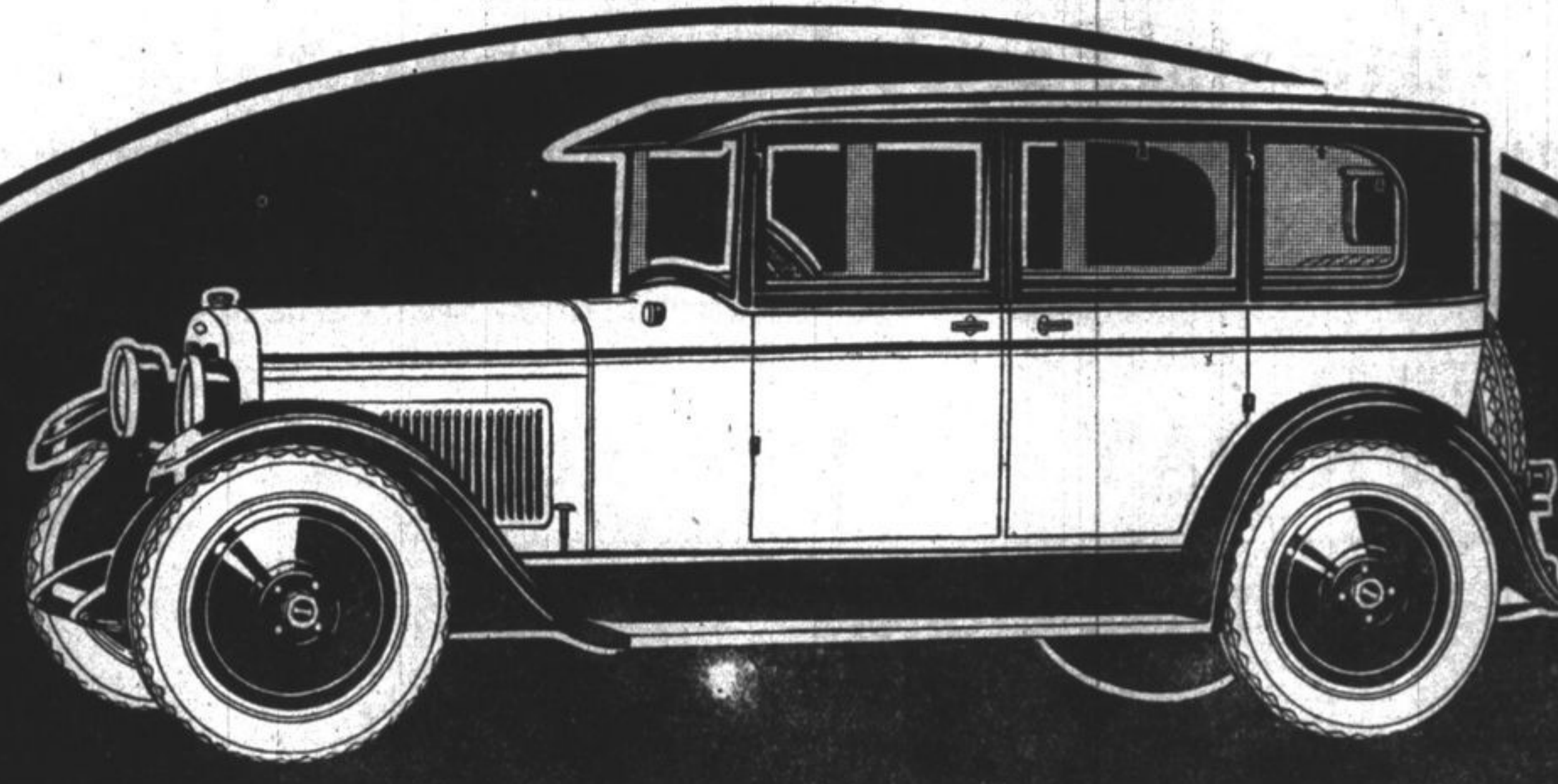
Light Six
4-Door Sedan

Leads the World in Motor Car Value

| LIGHT SIX SERIES | |
|-------------------------|--------|
| Touring | \$865 |
| Four-Door Sedan | 995 |
| f. o. b. Racine | |
| SPECIAL SIX SERIES | |
| Touring | \$1135 |
| Coupe | 1165 |
| Sedan | 1215 |
| Roadster (2-Pass.) | 1115 |
| Roadster (4-Pass.) | 1225 |
| Four-Door Sedan | 1315 |
| Four-Door Special Sedan | 1445 |
| f. o. b. Milwaukee | |
| ADVANCED SIX SERIES | |
| Touring | \$1340 |
| Sedan | 1425 |
| Roadster (4-Pass.) | 1475 |
| Four-Door Sedan | 1525 |
| Extra Long Wheelbase | |
| ADVANCED SIX SERIES | |
| Touring (7-Pass.) | \$1490 |
| Victoria (4-Pass.) | 1790 |
| Four-Door Coupe | 1990 |
| Sedan (7-Pass.) | 2090 |
| f. o. b. Kenosha | |

\$995
f. o. b. factory

Six-cylinder motor; 7-bearing crankshaft; 6-bearing camshaft; full force-feed lubrication to all main bearings, connecting rod bearings, and camshaft bearings; Mallard Green finish; four wide doors; seat upholstery of genuine Velour; 4-wheel brakes; full balloon tires; 5 disc wheels, cowli ventilator, cowli lights, dome light; rear-vision mirror, and automatic windshield wiper.



For the MONEY the GREATEST quality

Highland Park Nash Sales Telephone H. P. 1608

With your own eyes you can clearly see how FAR this Nash Light Six leads its field.

It offers feature after feature others do not—unless you pay several hundred dollars more.

NONE of like price have ALL that Nash gives you in this superb car.

The motor is an outstanding Nash engineering achievement—six cylinders, 7-bearing crankshaft, 6-bearing camshaft.

Try the "PICK-UP"—in a flash you are

traveling at top speed. Utter smoothness, utter ease, sparkling swiftness.

Next try the brakes—and you're at a dead stop nearly before you know it. They're 4-WHEEL brakes—of special Nash design—with a wealth of power but velvety smooth in operation.

They're included in the price—NOT an added cost—together with genuine full balloon tires and 5 disc wheels.

An hour in the car is a motoring experience you don't want to miss. COME in today!

Highland Park Nash Sales Telephone H. P. 1608

The Nash Price Range on Seventeen Different Models Extends from \$865 to \$2090, f. o. b. Factory

FROM
Material
SH SALES
AX
r Car Value
SHOP
al Clothes
TURE CO.
ice
Linoleums
ANSFER &
O.
e Transfer
ARDT
e
Excavating
LAUNDRY
Dyers
bers
K FUEL CO.
Coke
rial