

**MAN FOUND SLAIN  
MAY BE KNOWN HERE**

**Kansas Police Say Body Taken  
From River at Winfield  
Gave H. P. Address**

Has a Highland Park man been murdered in Kansas? This is the question which is puzzling the local police as a result of a letter received by Chief Edward Maroney from the chief of police of Winfield, Kan.

The communication states that a body was taken from the Walnut river at that place with evidences of having been a victim of foul play. There were no marks of identification, so finger prints were taken and sent to the Dept. of Justice, at Washington, D. C., with the result that information was returned that this man had been arrested last February in El Paso, Tex., on a charge of vagrancy, and finger prints taken.

The name and address he then gave, the report said, were Harry Sanders, or Saunders, according to the statement of the man to El Paso police. He was described as white, with dark brown hair, brown eyes; height six feet and one-half inch; weight 166 pounds. Two photographs were enclosed in the letter, but so far the police have been unable to obtain any information indicating that such a man had lived here.

It is thought possible he may have been employed at some time at one of the construction camps in this vicinity under another name.

**NEW SUBDIVISION  
NEAR DEERFIELD**

Signs of spring are numerous and not least among them are the increased activities in real estate circles. Deerfield is among the first to have a new subdivision this spring, in the laying out of the John Willman farm, near that village, with 62 lots of 60 feet frontage each, and 66 feet streets. The tract includes 20 acres, and buildings are restricted to a minimum of \$8,000. Improvements are included, and the subdividers maintain a permanent interest in the property, with facilities to finance building operations for purchasers. The lots are arranged to form an exclusive residence section of Deerfield. Barker & Stone, 160 LaSalle street, Chicago, are the realtors.

Illinois has twenty-nine universities and colleges and five normal schools.

**HIGHLAND PARK BOY  
FOR CAMP ROOSEVELT**

**Edward Loewenstein First From  
This Community To Be  
Registered**

Edward Loewenstein, son of Mr. Edward Loewenstein of this city is the first boy from Highland Park to register for attendance at Camp Roosevelt, the educational training camp for boys conducted by the Chicago board of education, under government supervision, on the Fort Sheridan, Illinois, military reservation. Camp Roosevelt is the only summer camp of its kind in the country. The camp is commanded by Major F. L. Beals, U. S. A., whose work for many years has been with boys. Boys twelve years of age and over are eligible for attendance. The diversified program of physical education, athletics, recreation, summer school, military instruction, scoutcraft, etc., is made possible through the co-operation of the U. S. War department, the Chicago First Aid chapter of the American Red Cross and the Central Y. M. C. A. of Chicago, and the Camp Roosevelt association.

**HOLLINS ALUMNAE  
BENEFIT BRIDGE**

The Chicago chapter of the Hollins College Alumnae association of Hollins, Virginia, will have a benefit bridge at the Evanston Woman's club on Saturday, April 24, at two o'clock. Reservations may be made with Miss Dorothy Mayo, Highland Park 2090. Hollins college, though not so well known in the north, is one of the oldest women's colleges in the country, having been established in 1842 and was one of the very few schools in the south to keep open during the Civil war. There are three Highland Park girls there now: The Misses Gladys Gillen, Ruth Schonthal and Mary Lou Mayo.

**UNCLAIMED LETTERS**

Highland Park, Ill.  
Unclaimed letters, of foreign origin, for the week ending April 13, 1926:  
Mrs. L. A. Kinay.  
Carl Olsen.  
Jack Olsen.  
Dan S. Stern.  
Mr. and Mrs. Carroll Teller.  
Hugo L. Schneider, postmaster.  
There will be about six fishermen for every fish this spring, but the fish say there is safety in numbers.

**NEW ENGLAND HAS  
MANY INDUSTRIES**

That New England is slowly slipping, or at least standing still, is another of the long list of popular fallacies. As a matter of fact, the census shows that it is almost keeping pace in population growth with the rest of the country, notwithstanding the migration to the south. And then look at this: New England roads, with their small mileage, carried more forest products than the North Pacific and California roads with twice the mileage. And as for potatoes, its laughable. The little Bangor & Aroostook, 616 miles long, carried 25,894 cars of potatoes last year, while four principal railroads, with 15,028 miles in Minnesota, North Dakota and Wisconsin, carried 25,185. New England, the coming country, the place for young men!

EAT  
AT THE  
HOWARD-DELL  
CAFETERIA



**YOUR BATTERY WORK**  
where will you place it? With the concern that is able to show you the most service at the least cost, will you not? That's where we come in. We are willing to stake our reputation on the service we render. Recharging, repairing, renting. Also new batteries.

**Motor Car Electric  
Service**  
11 South Second St.  
Telephone Highland Park 266

Remark that exercise will promote beauty, and the girls are at least willing to walk down to the drug store to get the fixin' for it!

Formerly people used to get married in order to make a home, but now many of them do it to get away from home.

The music season does not begin for a good many men until they hear the crack of the bat knocking out a three-base hit.

**Talk  
"INTO" the Telephone**

Clearness of tone when speaking over the telephone insures that the person at the distant telephone will hear and understand your message. The telephone service is sometimes unjustly blamed for poor transmission when the fault is really with the user.

To obtain the best result speak directly into the telephone, with lips close to but not touching the mouthpiece. Speak in a moderate tone of voice and not too rapidly.

Compliance with these suggestions will improve the service to all users.

**ILLINOIS BELL TELEPHONE COMPANY**  
BELL SYSTEM  
One Policy - One System - Universal Service



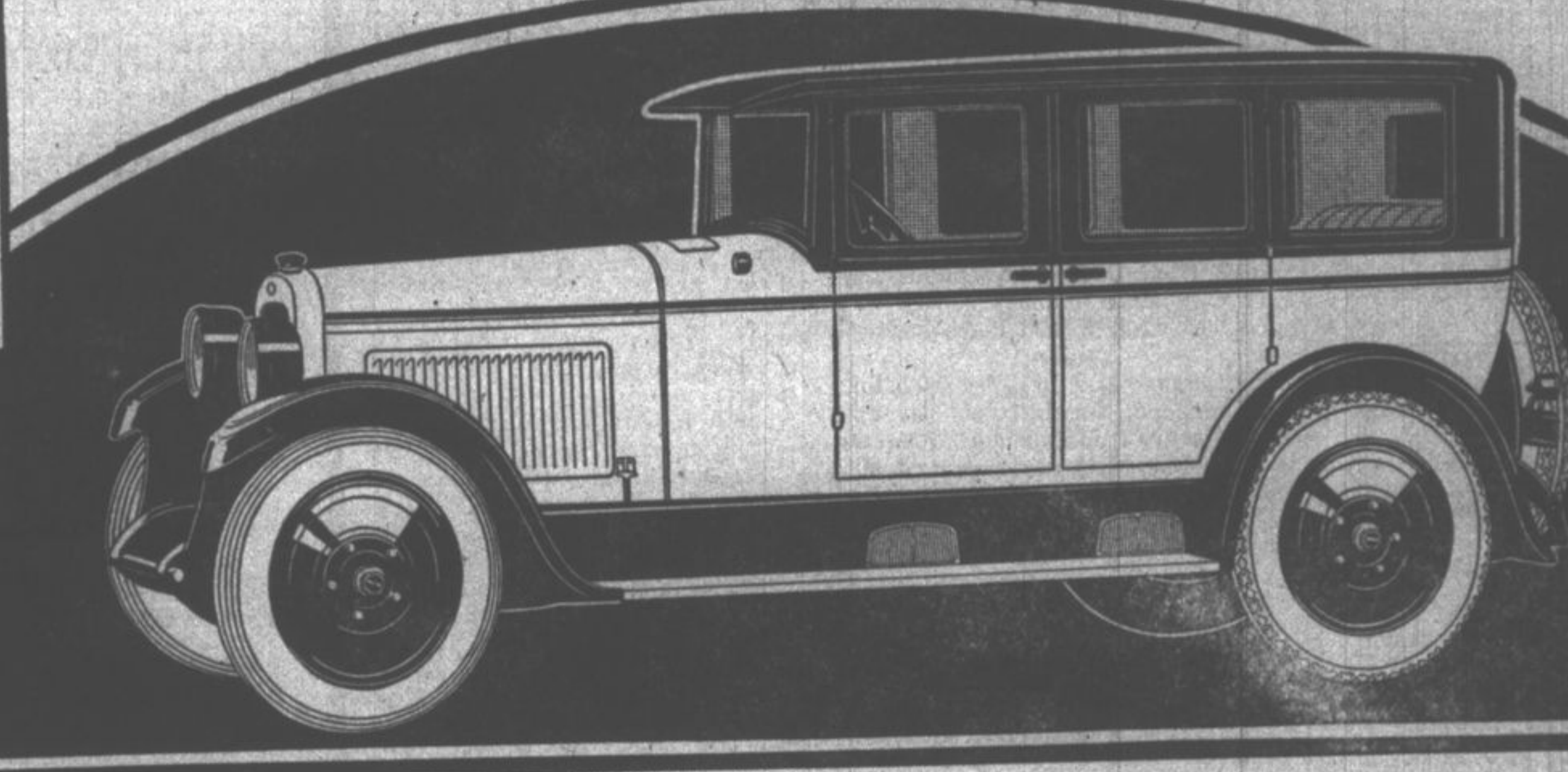
1876 - THE TELEPHONE'S FIFTIETH YEAR - 1926

**NASH**

*Leads the World in Motor Car Value*

**NASH  
AJAX**  
4-Door Sedan  
**\$995**  
f. o. b. factory  
Don't fail to inspect the  
Ajax Six 4-Door Sedan  
—another Nash success  
—outstanding leader of  
the \$1000 field.

**Special Six  
4-Door Sedan**  
**\$1315**  
f. o. b. factory  
Highly improved six-cylinder motor; full force-feed lubrication to all main bearings, connecting rod bearings, and camshaft bearings; oil purifier, air cleaner, gasoline filter, twin flywheels; wide doors and upholstery of genuine Chase Velmo Mohair Velvet; four-wheel brakes; full balloon tires; five disc wheels; coil ventilator, coil lights, dome light; rear-vision mirror, and automatic windshield wiper.



**Superb in Quality, Supreme in Value**

**NASH  
SALES**  
Local  
Representative  
Phone  
H. P. 1608

Clearly-defined superiority over all other cars in its class in *quality* and in *value*—that's why sales of this Special Six 4-Door Sedan are overstepping all former high marks.

The scientifically refined Special Six motor is endowed with mechanical features of the most advanced and highly efficient type. Conspicuous among these is the full force-feed lubrication system.

Full force-feed lubrication adds immeasurably to the car's smoothness by continuously immersing in a bath of oil all main bearings, connecting rod

bearings and camshaft bearings. In addition it permits long periods of sustained high speed without the slightest strain or injury to the motor.

Furthermore, an oil purifier, a gasoline filter and an air cleaner increase the efficiency and long life of the engine by keeping out dust and other abrasives so harmful to smooth operation.

Finally, Nash-designed four-wheel brakes, full balloon tires and five disc wheels—all at no extra cost—typify the exceptional equipment Nash offers in this car.

**NASH  
SALES**  
Local  
Representative  
Phone  
H. P. 1608

The Nash-Ajax Price Range on Sixteen Different Models Extends from \$865 to \$2090, f. o. b. Factory