

# CLEARANCE SALE

Having completed our Inventory we will offer Seasonable Goods Greatly Reduced

## Also Sheets and Pillow Cases

### The PEQUOT BRAND

Sheets 81 x 99 inches, each . . .	\$1.95	Cases 42 x 36 inches . . . . .	42c
Sheets 72 x 99 inches, each . . .	\$1.80	Cases 45 x 36 inches . . . . .	47c
Sheets 63 x 99 inches, each . . .	\$1.65	Cases Hemstitched, add 10c each	

### The SAXON BRAND

Sheets 81 x 90 inches, each . . .	\$1.35	Cases 42 x 36 inches . . . . .	35c
Sheets 72 x 90 inches, each . . .	\$1.25	Cases 45 x 36 inches . . . . .	40c
Sheets 63 x 90 inches, each . . .	\$1.15		

Berkeley No. 100 Cambric at, yard	34c	Imported Gingham at, yard	29c
Berkeley No. 60 Cambric at, yard	25c	Comfort Challies at, yard	16c
Hope Bleached Muslin at, yard	18c	Big Batts, first quality at	\$1.49
Ivanhoe Bleached Muslin at, yard	15c	Bath Towels 5 for	\$1.00
All Linen Crash at, yard	24c	Boys' Heavy Brown Stockings 3 pair for	\$1.00
Part Linen Crash at, yard	16c	Children's Stockings and Socks Buck color, the pair	25c
Percales, best quality at, yard	20c	Ladies' Rib Hose 3 pair for	\$1.00
Printed Silks at, yard	\$1.98	Nainsook Union Suits each	50c
Silk and Cotton Print at, yard	79c	Boys' Athletic Union Suits each	59c
Cretonne, 36-inch at, yard	23c	Ladies' Union Suits each	69c

This Sale Is an Unusual Opportunity to Lay in a Supply at a Great Saving

# L. R. RIGDON

## HARD ROAD RECORD IN STATE IN 1925

### NOTABLE ADVANCE MADE

Construction Not Equal to 1924 But Splendid Progress Made Considering Handicaps; Outlook Good

The year just closed has made available to the general public of this state 900 additional miles of superb hard surfaced roads. This additional mileage is not only of great value to traffic in the local communities, but adds much to the value of the mileage already existing by making it possible to reach points heretofore isolated by earth roads.

The world's record breaking program of 1,230 miles built in 1924 was not duplicated in 1925 because the Division of Highways was attempting to complete the \$60,000,000 bond issue system and encountered many difficult location and right-of-way problems. However, the mileage completed during 1925 exceeds the mileage completed in any previous year in the state's history except 1923 and 1924, and the record of 1923 would have been equalled had not extraordinarily unfavorable weather conditions prohibited the completion of a considerable mileage of work under contract. The months of October and November are ordinarily excellent construction months, but this year the combination of unusually heavy rain fall and low temperatures brought road paving progress to a standstill.

### First Half of Year

Prior to July 1st, there was built as much pavement in 1925 as in the record breaking year of 1924 in spite of the fact that less paving outfits were working.

The work done in 1925 was well distributed throughout the state and a number of important connections and gaps in through routes were completed. Transportation and labor conditions were very favorable throughout the year. Material producers have generally increased the capacity of their plants and no car shortages were encountered, with the result that in no previous season have shipments of road building materials been more satisfactory.

Perhaps the greatest measure of local relief was given to the west central portion of the state between the Illinois and Mississippi rivers where much heavy grading had been done during previous years but where pavement could not be completed prior to this year because of the necessity of waiting for heavy fills to settle.

The Illinois state highway system has reached the stage of development where every additional mile of pavement adds greatly to the transportation facilities of the state. Summarizing the mileage completed during the active road building period during the administration of Governor Len Small, it is interesting to note that 78% per cent of all the roads completed outside of cities and villages have been built during the past five years.

Continuing the policy of previous years, all pavements have been carefully maintained. Every effort has been made to keep the highways in a neat, presentable, and safe condition, and to safe-guard the highway investment by thorough and adequate maintenance. In addition, the department has realized the great importance of thorough and adequate highway marking. The excellence of route marking developed during previous years has been continued and exceeded during the past year.

### Outlook Favorable

The outlook for 1926 is favorable. Unless unforeseen conditions should prohibit, the department expects to complete at least 1,000 miles of durable hard surfaced roads. However, before any contracts can be let on the \$100,000,000 bond issue roads, it is necessary that all contracts be let for the completion of the \$60,000,000 bond issue roads unless engineering conditions make it clearly impracticable. The department is concentrating all efforts towards clearing up remaining disputed locations on the \$60,000,000 bond issue system in order that the new program may be undertaken.

Every effort will be made to continue the highway work of Illinois at the same record breaking rate which has prevailed during the past few years.

## WINNETKA MAN IS HOME FROM EUROPE

Chesley R. Perry, 272 Sylvan road, Winnetka, returned December 22 from a trip to Europe in the interest of Rotary International. While in Brussels Mr. Perry, who is secretary of Rotary International, presided at a meeting of Rotarians from 10 different countries. He said that the feeling in Europe is that a new day is dawning, since the signing of the Locarno pact, and that the various countries may now develop a quiet and peaceful spirit instead of a warlike one. During Mr. Perry's absence his father, 90 years old, who lives with him, fell and suffered severe injuries. The aged man is progressing toward recovery, it is said, in spite of his advanced years. He is being cared for at the Perry residence.

## LATE PROCEEDINGS IN PROBATE COURT

### Action in Estates Up for Settlement; Docket Entries and Orders

Edward O. Moody, an employe of the North Shore line, who died recently after living a lifetime in railroad service, leaves an estate of \$6,000 to his wife, it was shown in the probate court last week. Other cases included estates of:

John Fox, proof of heirship established.

John Sutherland, Waukegan, supplemental inventory and final report approved; estate closed.

Ahoda A. Sutherland, Waukegan; hearing on final report continued to January 25, 1926.

Richard Duddles, Libertyville; inventory and appraisement bill approved.

Albert Lenzen and Viola Hertel, minors; report of sale of real estate approved.

Herman H. Kampert, Barrington; final report approved; estate closed.

Edward O. Moody, Waukegan; will admitted to probate; all estate bequeathed to wife, Cora A. Moody; estimated value of estate \$4,000 real and \$2,000 personal. Letters testamentary issued to Cora A. Moody. Proof of heirship taken; appraisers appointed.

Fanny Elizabeth Orr, Highland Park, proof of heirship taken; hearing on proof of will continued to Jan. 11, 1926.

John A. Lahey, North Chicago; final report approved; estate closed.

Albert H. Acher, Lake Forest; final report approved; estate closed.

Robert Brain, Gurnee; final report approved; distribution ordered.

Clement Hamel, Libertyville; final report approved; estate closed.

Lottie B. Tichenor, foreign will admitted to probate; proof of heirship taken.

Marie Mahen, Highwood; inventory and appraisement bill approved.

Jackson K. Dering. Hearing on petition for sale of stock continued to Dec. 31, 1925.

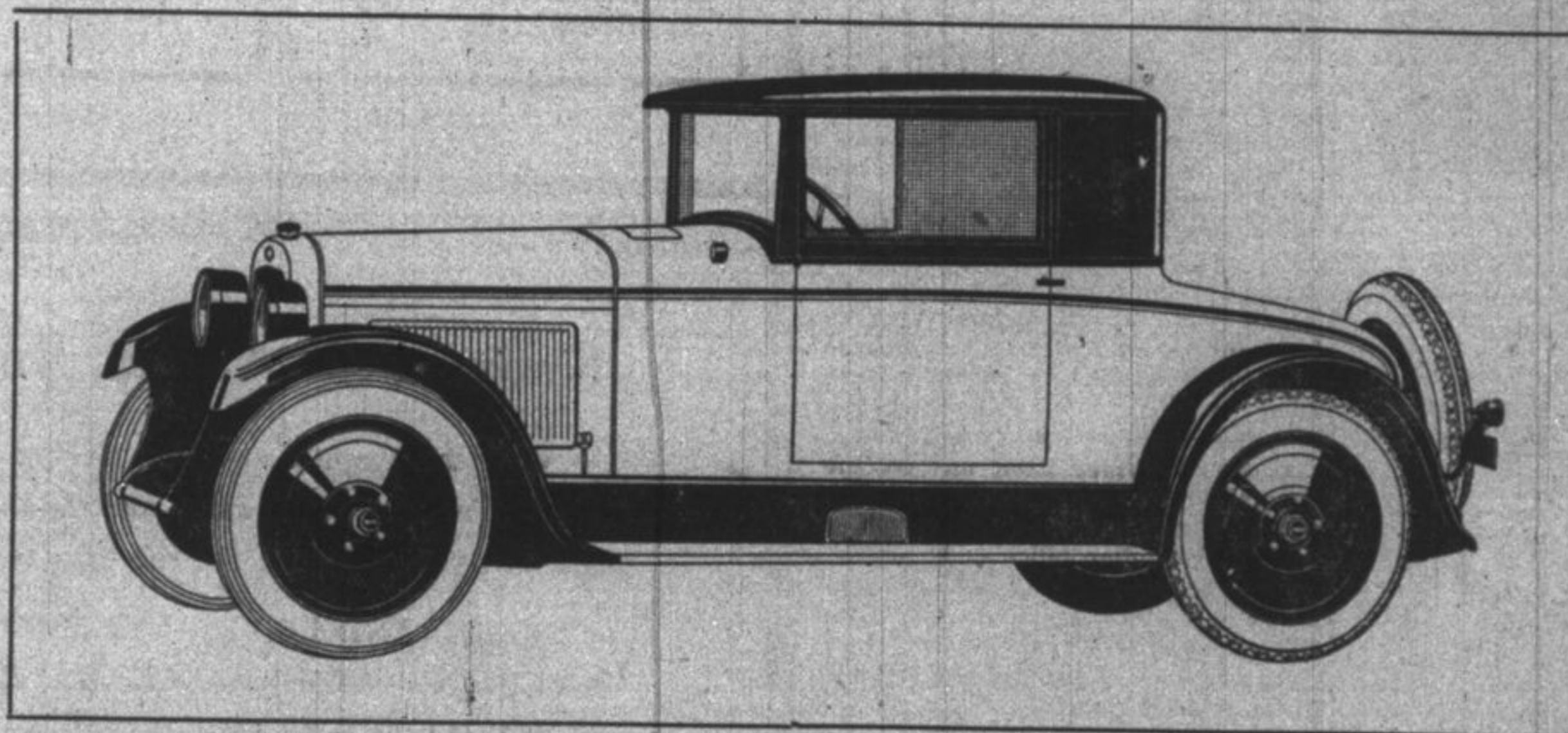
## DRAMATIC SOPRANO AT NEW TRIER SOON

Dusolina Giannini, dramatic soprano, will appear in recital at New Trier high school auditorium Friday evening, January 8, in one of the series of artist-recitals given under auspices of the Winnetka Music club. Miss Giannini who has been characterized as a second Patti, has just completed a triumphant season in Europe. Members of the Music club urge season ticket holders who may find it impossible to attend this recital to make their tickets available to others who do not possess season tickets but who would like to attend next Friday's recital.

# New Nash Designed Special Coupe

## \$1,165.00

F. O. B.



**I**N THIS NEW SPECIAL SIX COUPE there has been achieved the highest expression of fine car development in this price class.

This new model embodies qualities till now distinguishing and exclusive attributes of far more costly cars.

Nash resourcefulness in creating motor car styles of extreme distinction has provided bodies of compelling charm.

Modeled with magnificent artistry, and swung very low, it presents a unique appearance of length and lowness never secured before except in much larger cars of far greater wheelbase.

# HIGHLAND PARK NASH SALES

Telephone H. P. 1608