

Four schools are maintained by the Central Y. M. C. A.—the school of commerce, college of arts and sciences and a day and evening preparatory school where students may fit themselves to meet the requirements for entrance into the accredited college courses of the first two departments. Total enrollment in the schools in 1924 was 5,354, an increase of 101 per cent during the five-year period, 1919-1924.

SUDS AND DUDS
of the
DURMENT LAUNDRY



Suds finds laundry work just play. He likes to drive the dirt away!

Suds thoroughly enjoys his chosen vocation of washing clothes. He's clean minded through and through and it pains him terribly to see clothes become soiled and all mused up. He likes to put them in shape again—and he likes to take orders over the telephone.

LOOK FOR SUDS & DUDS

DURMENT-HOME LAUNDRY
HIGHLAND PARK ILL.
216 N. FIRST ST
PHONE-H.P. 1507

THE SANITARY ENGINEER



Sanitation is the foundation of GOOD HEALTH.

And perfect plumbing of practical worth and real beauty is the foundation of our business success. Sanitation is health insurance and when it comes to sanitary plumbing we're the doctors.

A Bath A Day Keeps You Fit Every Way

VIC J. KILLIAN, Inc.
SANITARY ENGINEERS
Specialists in New Work and Remodeling
874 Center St., WINNETKA
Tel. Winnetka 1260

CHRISTIAN SCIENCE

Subject for next Sunday's lesson, sermon "Christ Jesus."
Services are held in this church, 387 Hazel avenue, every Sunday morning at 10:45. Sunday School meets at nine-thirty o'clock and is open to pupils up to the age of 20 years. The Wednesday evening meeting, which includes testimonies of Christian Science healing, is at 8:00 o'clock.

You are cordially invited to make use of the reading room at 387 Central avenue, which is open every week day from nine o'clock in the morning until six o'clock in the evening and Sunday afternoon from two-thirty to six o'clock.

TRINITY CHURCH

The Rev. P. C. Wolcott, D. D., rector
Sunday services—
The Holy Communion—7:30 a. m.
The Church School—9:30 a. m.
Matins—11:00 a. m.
(The first Sunday in the month, Holy Communion).
Evensong—5:00 p. m.
Thursday and holy days, the Holy

GRACE M. E. CHURCH

North avenue and Lauretta place
Wm. B. Doble, minister
9:30 a. m.—Sunday school.
10:45 a. m.—Morning worship. Sermon by Rev. W. H. Holgate.

STUDY REAL ESTATE IN Y. M. C. A. SCHOOL

Downtown Night School Establishes New Course in Handling Property

Greater Chicago's rapid expansion and the keen public interest in real estate is reflected and well illustrated in the greater provision being made by the schools and universities of the city to accommodate the increasing numbers of young men who desire to study the real estate business.

Realizing the growing importance of real estate selling as a vocation for young men, the Y. M. C. A. school of commerce, one of the largest of the downtown night schools, is leaving nothing undone to provide the greatest possible facilities for teaching the theory and practice of real estate. A special course is given, and at the close of two years study the student receives a diploma signed jointly by the Y. M. C. A. school of commerce and the National Association of Real Estate boards. Students enrolled in this course last year numbered 400, and arrangements are being made in preparation for a much larger registration this year.

Announcements for the coming year, which opens Sept. 15, include the selection of J. A. Humphreys to direct the school of commerce. Dean Humphreys formerly was manager of the personnel service bureau, which gives vocational guidance and individual counsel to every student in the Y. M. C. A. schools. At one time he was principal of the Skokie school at Winnetka, Ill.

The original daylight saver was Joshua, who made the sun stand still while he lammed the Amorites.

FORD CO. ANNOUNCES A FEW IMPROVEMENTS

CLOSED CARS IN COLORS

Bodies Longer, Lower, and All-Steel; Brakes Are Made Larger and More Powerful; Other Changes

Body changes and chassis refinements more pronounced than any made since the adoption of the Model T chassis have just been announced by the Ford Motor company. There will be no advance in price, it also was stated.

Outstanding features of the improvements in both open and enclosed types are lower, all-steel bodies on a lowered chassis, complete new design in most body types, a change from black to color in closed cars, larger, lower fenders, newly designed seats and larger, more powerful brakes.

Longer lines, effected through higher radiator and redesigned cowl and bodies are apparent in all the improved Ford cars; but are especially pronounced in the open types. Wide crown fenders hung close to the wheels contribute to the general effect of lowness and smartness.

While runabout and touring cars remain in black, the closed bodies are finished in harmonic color schemes, enhanced by nickel radiators. The Coupe and Tudor bodies are finished in deep channel green while the Fordor is rich Windsor Maroon.

Greater comfort is provided for driver and passengers in both open and closed cars by larger compartments, more deeply cushioned seats and greater leg room.

Many new conveniences are also incorporated in the improved cars. In the Runabout, Touring car, Coupe and Tudor, the gasoline tank is under the cowl and filled through an ingeniously located filler cap completely hidden from sight by a cover similar in appearance to a cowl ventilator. One piece windshield and narrowed pillars in the Tudor and Coupe offer the driver greatly increased visibility and improved ventilation.

Driving comfort is materially increased by lower seats, scientifically improved back rests and lowered steering wheel. Brake and clutch pedals are wider and more conveniently spaced.

Brakes Are Improved
Four doors are now provided on the Touring car and two on the Runabout permitting the driver to take his place from left side of the car. Curtains, held secure by rods, open with the doors.

Most important in the mechanical changes are the improved brakes. The transmission brake drum and bands have been considerably increased in size which gives the foot brake softer and more positive action as well as longer life. The rear wheel brake drums are larger and the brake of self energizing type.

Cord tires are now standard equipment on all Ford cars.
At the main offices of the company it was stated today that production of the new line is under way in all assembly plants of the company throughout the country and the improved cars are being sent to dealers for showing.

RACES PLANNED FOR LAKE COUNTY FAIR

Extra Purse Are Poster For Derbies To Be Run at Libertyville

At the meeting last week of heads of the Lake county fair it was decided to hold special events for the Libertyville track. There will be a Waukegan Derby, the fourth horse race at the fair on Saturday, Sept. 5. To stimulate interest an extra \$50 will be posted. This is expected to bring out faster horses in the race which is to be a 1-1-8 miles. There will be extra purses in the North Shore Derby on the next day and the Lake County Derby on the following Monday.

Reports from townships were heard. Exhibits are being lined up and already the auto exhibit is about complete. Veterinary Wickett of Deerfield will pass on animals entered.

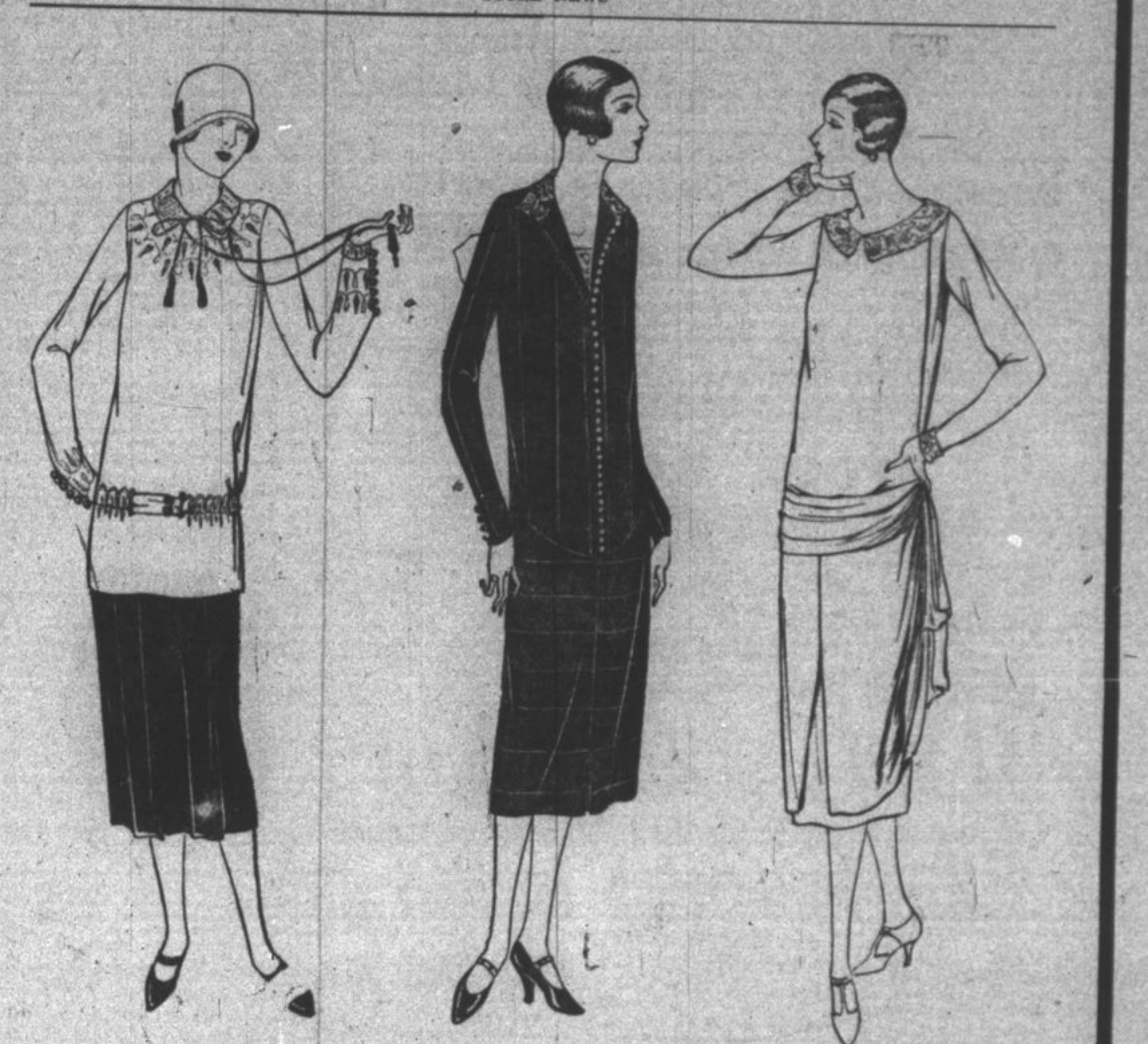
On Monday a "Lake County Derby" will be put on, all of these races of course being running races.

The Fair this year will be featured by entire absence of trotting or pacing races. It is the first time in the history of the Lake County Agricultural association that all races have been by runners. The management this year thought they would try the experiment in the hopes of creating wider interest in such events, the general feeling being that sportsmen in and about Chicago prefer running races to trotting and pacing.

It is announced that plans are fast maturing for the auto show and indications are that it will be a larger one than last year for already as much space has been engaged by exhibitors at this time as was used in the entirety last year.

More than 5,000 teachers were enrolled in the 115 extramural courses conducted in 40 different communities by the school of education of Pennsylvania State College. In addition, nearly 800 teachers pursued correspondence courses offered by that school.

GARNETT'S
STORE NEWS



The Dresses of the New Season Are Charming

Exquisite colors enhance the charm of the new frocks. Deep tones of red, blue and purple, often combined with black or white, step forth and their appeal is at once irresistible. The new lines which Autumn introduces tell of Fashion's tendency to the more fitted silhouette.

Prices Range from
\$19.75 to \$34.50

- A Dress of pansy satin has large tie, collar and sleeve embroidered in large dot effect. **\$32.50**
- Black Satin Dress with side pleated flounce; is trimmed with red and metallic braid. **\$29.75**
- Henna flat crepe fashions a dress with long tie and apron effect front. Priced at **\$29.75**
- Black satin dress in two piece effect; has pleated skirt. Pansy is used as trimming. **\$18.50**

Making the Children's School Clothes Is a Pleasure

Lovely materials and simplified patterns have not only made sewing a pleasant task, but to many opens a new avenue for splendid economy.

- Cotton crepe fills a place all its own — for underwear, rompers, little frocks; soft colors in plain and figured patterns; yard **35c**
- Early Fall Coats and School Dresses may be made of flannel. 54 inches wide. Yard, **\$3.50**
- 54 inch Pioret Twill, for little girls' dresses, is of fine all-wool quality. Navy blue. **\$4.95**
- Checks and plaids always becoming to little folks — gingham are here in large assortment of colors. Priced according to quality—**25c to 65c** yard

Pictorial Review Patterns



These hand-made chemises, stepins, and gowns represent high quality in both material and workmanship.

- The sheerest fabrics are used in a range of new lingerie colors.
- Stepins of crepe de chine edged with lace and have lace inserts. **\$3.50**
- Hand-embroidered night gowns of exceptionally fine fabrics and superior workmanship are **\$2.50**
- Hemstitched chemises of fine voile with silk stitch trim, are priced at **\$2.25**
- Combining Jacket of silk crepe, elaborately trimmed with fine lace. **\$5.95**
- Pajamas of crepe de chine with georgette lace and ribbon as trim. **\$13.95**
- Envelope chemise of heavy quality crepe de chine with sheered yoke and lace trim. **\$8.50**

Gossard and Warner Corsets Assure the Success of the New Fall Costume



ARCH PRESERVER SHOE

THE shoe that adds to personal charm, because it makes possible a graceful poise. Comfortable and vigorous feet result logically from wearing the Arch Preserver Shoe. Its concealed, built-in arch bridge and flat inner sole keep feet healthy as well as smartly styled.

Queen Quality Shoes and Arch Preservers For Women
Florsheim Shoes For Men

FELL BROTHERS
Phone 456 509 Central Ave., Highland Park, Ill.