

**DUTCHESS TROUSERS**  
10¢ a Button, \$1.25 a Rip

### HOW MUCH ARE TROUSERS WORTH?

**YOU** must have good style, good material and good workmanship or else trousers are expensive at any price.

For true value, you can't beat Dutchess Trousers. And here is why: For forty-six years the manufacturers of these trousers have made nothing else.

Because this famous firm has always kept abreast of the style and taken scrupulous care even to the smallest detail, their business has grown very large.

This gives them the chance to buy good materials in quantities at lowest prices. You get the benefit. The prices are right; moderate in the first place and lowest of all in the end because of their long wear.

Remember, every pair of Dutchess Trousers must wear because every pair is backed by the written warranty of "10¢ a Button, \$1.00 a Rip."

All types of Dutchess Trousers for all purposes. Come in and take your pick.

## GARNETT'S

Store for Men

## CHAMBERLIN METAL WEATHERSTRIPS

BEST BY THE TEST OF TIME!

"Since 1893 the Standard"

INSTALLED BY OUR OWN MECHANICS, SPECIALLY TRAINED, HIGHLY SKILLED

File your order NOW and take advantage of our early Spring PRICES. They will interest you!

SEND IN THE COUPON

Chamberlin Metal Weatherstrip Co.,  
704-706 S. Dearborn St., Chicago.  
Please give me an estimate for equipping.....doors,  
.....windows.  
Name.....  
Address.....  
City.....

### Highland Park Transfer and Storage Company

FIREPROOF WAREHOUSE  
374 Central Avenue

## MOVING PACKING SHIPPING

TRANSFER OF  
BAGGAGE FREIGHT  
AND  
EXPRESS

ALEX RAFFERTY, Sr., Manager  
Office 374 Central Avenue  
Phones 181-182-29

### EXPLAINS LOCATION OF NEW STATE ROADS

STATEMENT BY DIRECTOR

#### Public Hearings To Be Held In All Cases Where Highways Are to be Constructed Says Miller

C. R. Miller, director of the department of public works and buildings, and Frank T. Sheets, chief highway engineer, recently issued the following statement regarding the location and securing of right of way on the new bond issue routes.

"Many communities are beseeching the department for a decision as to the location of the \$100,000,000 bond issue routes and forwarding petitions accompanied by right of way dedications covering various locations in which they are interested. The new bond issue law provides that all contracts for the completion of construction of the routes in the first bond issue system shall be awarded before any contracts are awarded on the new routes. In view of this provision the department is making every effort to place under contract at the very earliest opportunity all of the remaining 1300 miles on the \$60,000,000 bond issue system and it will not be in a position to take up the question of location of any routes under the second bond issue system until some time during the summer.

"Any attempts to secure right of way before the locations are decided and surveys and plans are made are inadvisable.

#### Will Hold Hearings

"Before final decisions as to locations are made, the department, in conformity with its past policies will hold public hearings at which all the proponents of the various possible locations will be heard. Stenographic records of the hearings will be made and we will study carefully the information thus obtained, and the engineering data collected on the various routes, after which a final decision will be made as to location with a view of giving the greatest benefit to the greatest number of people, bearing in mind minimum distance to build and travel and minimum cost.

"No community will lose any rights by delaying conferences on the routes outlined in the new bond issue law and we do not see any advantage of delegations coming to Springfield at this time in an effort to locate these roads in advance of the public hearings we will hold in the communities where those roads are located.

"We will appreciate the co-operation of the general public along the lines herein stated."

#### WOMEN SEEK STYLE; MEN NOTE PRICES

#### Difference in Shopping Traits Is Noted by Retail Merchant; Tells Why

A retail merchant tells me that men, when shopping for wearing apparel, look at quality or price first and style last. Women do exactly the reverse—that is, they consider style first of all, and then quality and price.

If an article is priced preposterously high, a fashionable woman is likely to assume that it must be more stylish and that, therefore, the price is all right, says the Nation's Business.

Salesmen in stores see examples of this nearly every day. If a mistake is made in placing the retail prices on two cloaks, a woman is almost certain to think that the higher priced one is much more attractive. A big department store made an error in marking furs. There were two kinds of low-grade furs, one intended to sell for \$20 a set—consisting of muff and boa—and the other to sell for \$9 apiece or \$18 a set. Through an error, the cheaper furs were marked \$36 a set, even though they were not as good furs as the sets on the same counter for \$20. Yet the \$36 sets sold three times as rapidly as the others. In fact, they were nearly all sold before the establishment discovered its mistake.

Each customer really thought they were much prettier than the supposedly cheaper furs. Moreover, a woman who can afford to pay \$36 for an article does not like to worry along with something costing only \$20.

#### NOTICE OF LETTING CONTRACT ASSESSMENT NO. 289

Board of Local Improvement of the City of Highland Park.

NOTICE IS HEREBY GIVEN that bids will be received for the construction of a reinforced concrete pavement in St. Johns Avenue from Cedar Avenue to Roger Williams Avenue; Ava Street from Judson Avenue to St. Johns Avenue and Marshman Street from Judson Avenue to St. Johns Avenue, all in the City of Highland Park, County of Lake and State of Illinois, as a whole in accordance with the ordinance therefor.

Said bids will be received by the Board of Local Improvement at its office in the City Hall, Highland Park, Illinois, until 5:15 o'clock p. m. on the 27th day of March, 1925, at which time and place they will be publicly opened and read.

The specifications and blank proposals will be furnished at the office of the Board of Local Improvements in the City Hall of said City.

The contractor will be paid in bonds which bonds will draw interest at the rate of six (6) per cent per annum. The successful bidder for the con-

struction of said improvement will be required to enter into bond in a sum equal to one-third of the amount of his or their bid with sureties to be approved by the President of the Board of Local Improvements when entering into the contract for the construction of said improvement.

All proposals or bids must be accompanied by a certified check payable to the President of the Board of Local Improvements of the City of Highland Park for the sum of not less than ten (10) per cent of the aggregate of the proposal.

Said proposal must be delivered to the President of the Board of Local Improvements in open session of said Board at the time and place fixed herein for the opening of the same.

No proposal or bid will be considered unless accompanied by check herein provided.

The Board of Local Improvements reserves the right to reject any or all bids if they deem it best for the public good.

FRANK L. CHENEY,  
FRED A. PRESTON,  
JOSEPH B. CARD,  
LYLE GOURLEY,  
Board of Local Improvements,  
City of Highland Park. 2-3

### MORAN BROTHERS

MODERN PLUMBING AND HEATING

Estimates Cheerfully Given. Jobbing a Specialty  
WITTEN BLDG. 360 CENTRAL AVE.  
Telephones: Shop, H. P. 1404 Res., H. P. 439-1342

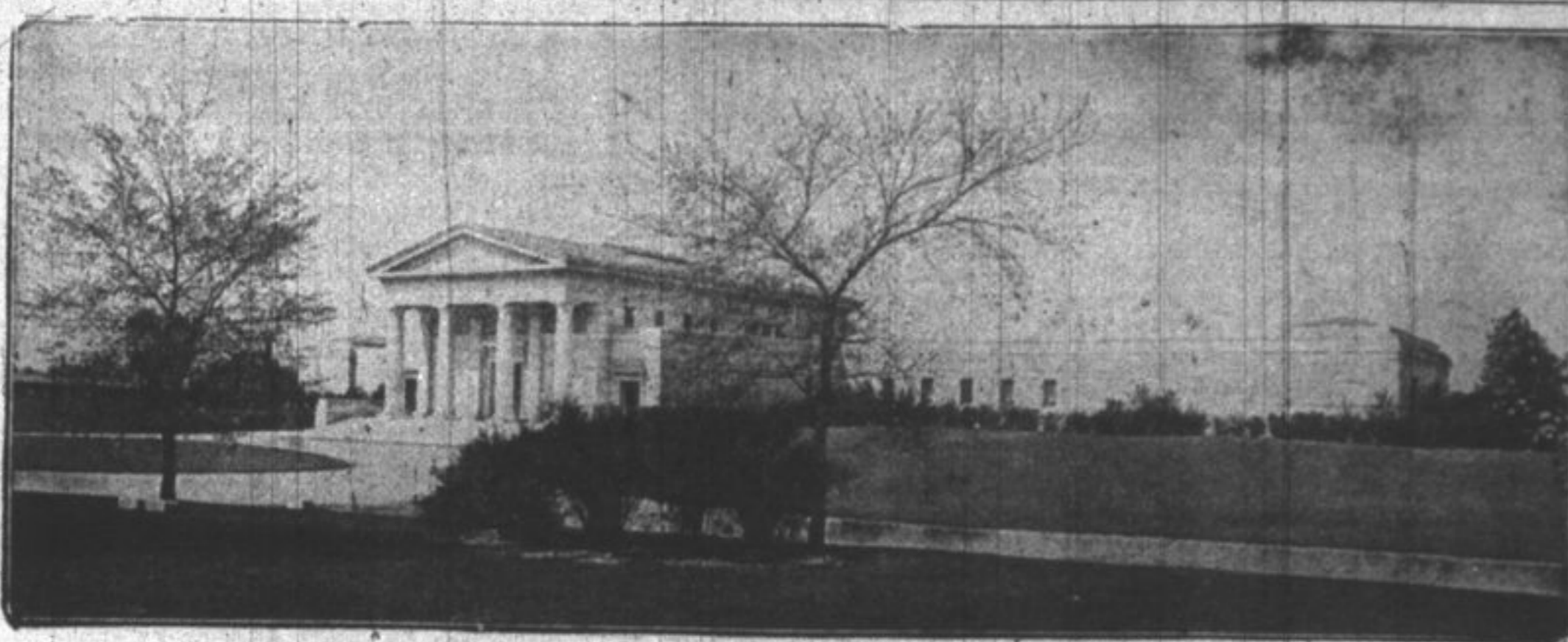
### PIANO MOVING

## Edward Norrlen

PACKING, MOVING & SHIPPING  
Fireproof Storage

Padded Auto Vans Long Distance Moving  
BAGGAGE, EXPRESS, FREIGHT and TRANSFER  
NO JOB TOO LARGE; NO JOB TOO SMALL

Office & Residence: 829 Ridgewood Dr. Tel. Highland Park 590



## ROSEHILL MAUSOLEUM

The great facts of our existence can scarcely be put into words, or even thoughts, except by the most inspired among us. Death finds few who can express reverence and sorrow that comes with it. Words, happily, are unnecessary. Rosehill Mausoleum with its beauty like a benediction, mutely expresses the sentiments that instinctively come with bereavement. Its eloquent marble loveliness voices all, for all time.

The Rosehill Mausoleum offers the utmost in practical protection. An ample Trust Fund, constantly increasing, assures perfect and everlasting care; a Perpetual Charter grants Rosehill Mausoleum its present location forever; and the correct design of the structure protects it against the elements and the years.

There are, at present, a limited number of Memorial Rooms available; there are also single crypts, arranged in groups of two, three, four or more; and Family Sections, each containing five compartments, enclosed with gates of bronze. The cost is proportionate, yet always reasonable. We urge you to make a personal inspection. Cards of admission are easily obtained at the Cemetery entrance.

A descriptive illustrated booklet of Rosehill Mausoleum will be sent upon your request.

## ROSEHILL CEMETERY COMPANY

City Office  
1617 First National Bank Building  
Randolph 5340

Cemetery  
5800 Ravenswood Avenue  
Edgewater 0714

## Just a Chat at Twilight

**EVERY** evening after 8:30, long distance telephone rates (for "station-to-station" calls) are about 50 per cent lower. At midnight a still further reduction becomes effective and until 4:30 A. M. night calls are completed at about one-fourth the day "station-to-station" rates.



*To meet the demand for new telephones more plant must be built—at costs greater than the cost of the average of our present plant. To do this we must obtain capital and to attract this we must pay satisfactory returns. This we cannot do without adequate rates.*



This service makes it possible to call distant friends or relatives or your home if you are out of town, at a very small cost.

Just give the long distance operator the number of the telephone wanted and say you will talk to anyone who answers.

ILLINOIS BELL TELEPHONE COMPANY

BELL SYSTEM

One Policy . . . One System . . . Universal Service

\* Minimum reduced rate is 25 cents

**CHRISTIA READING**  
287 Central Ave  
Main  
First Church  
of High  
1381 Har  
You are cordia  
the Res  
HOURS: Wed  
6 p. m. Sunda  
for reading o

**Radio**  
50% of y  
caused by y  
ing lost the  
Any 201A  
299 tube th  
can be made  
for \$1.00  
Guarante

**North Shore**  
384 Cent  
Pho

**Radio**  
Rebuilt an  
If your set  
properly let

**Service and**  
done by ex  
**North Shore**  
384 Cent  
Pho

**The HOO**  
H BEATS...  
Don't let sum  
burdened with  
you have no  
recreation. P  
your Hoover!  
Then, in a  
week you can  
sweep and air  
quickly, easily  
—Sold on E

**H. W. Huber**  
15 SOUTH S  
Phone High  
Highland

**SUDS A**  
DUR  
LAU

**Suds find**  
work ju  
He like  
drive  
dirt  
SUDS throu  
chosen voc  
ing clothes. H  
ed through an  
it pains him  
clothes become  
mussed up.  
them in shape  
likes to talk  
telephone.

LOOK FOR S

**DURMEY**  
HIGHLAN  
126 N. I  
PHONE