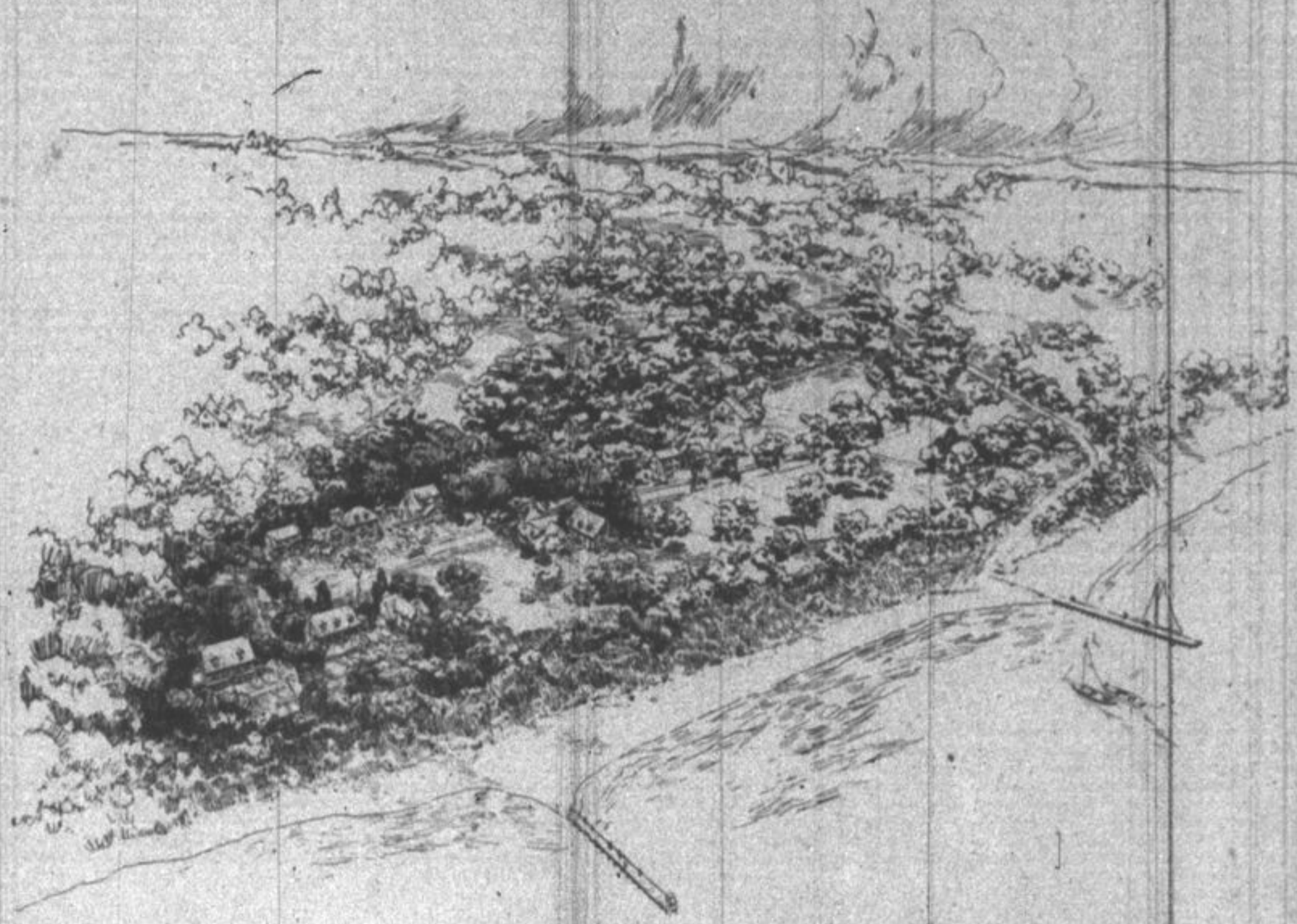


DEERE PARK



RAVINIA—on the Lake

The Only Subdivision on the North Shore With Riparian Right Lots

DEERE PARK—in the heart of Highland Park—Ravinia Section—42 acres—65 beautifully wooded, ravine traversed lots on the shore of Lake Michigan. Every lot in this subdivision has access to a private bathing beach.

All improvements including 18-foot concrete drives, sidewalks, sanitary sewer system, water, gas mains, and electric lights are being installed and paid for. No assessment against lot purchasers.

61 trains daily on the Chicago and Northwestern Railway—111 trains daily on the North Shore Electric. If driving out follow Sheridan Road, Route 42, to

Green Bay Road—continue north on Green Bay to County Line Road, then east to Sheridan Road and North one-half mile to property. Our office on the premises.

If you come by train or trolley, get off at Highland Park Station, where a Baird & Warner Automobile will meet you. Telephone Highland Park 1204 or Main Office Central 1855.

BAIRD & WARNER, Inc.
140 South La Salle Street, Chicago, Illinois

Gentlemen:

Please send me a descriptive book giving complete information on "Deere Park"—the ideal subdivision.

Name _____

Address _____

The Ideal Subdivision offered by

Baird & Warner, Inc., Founded 1855