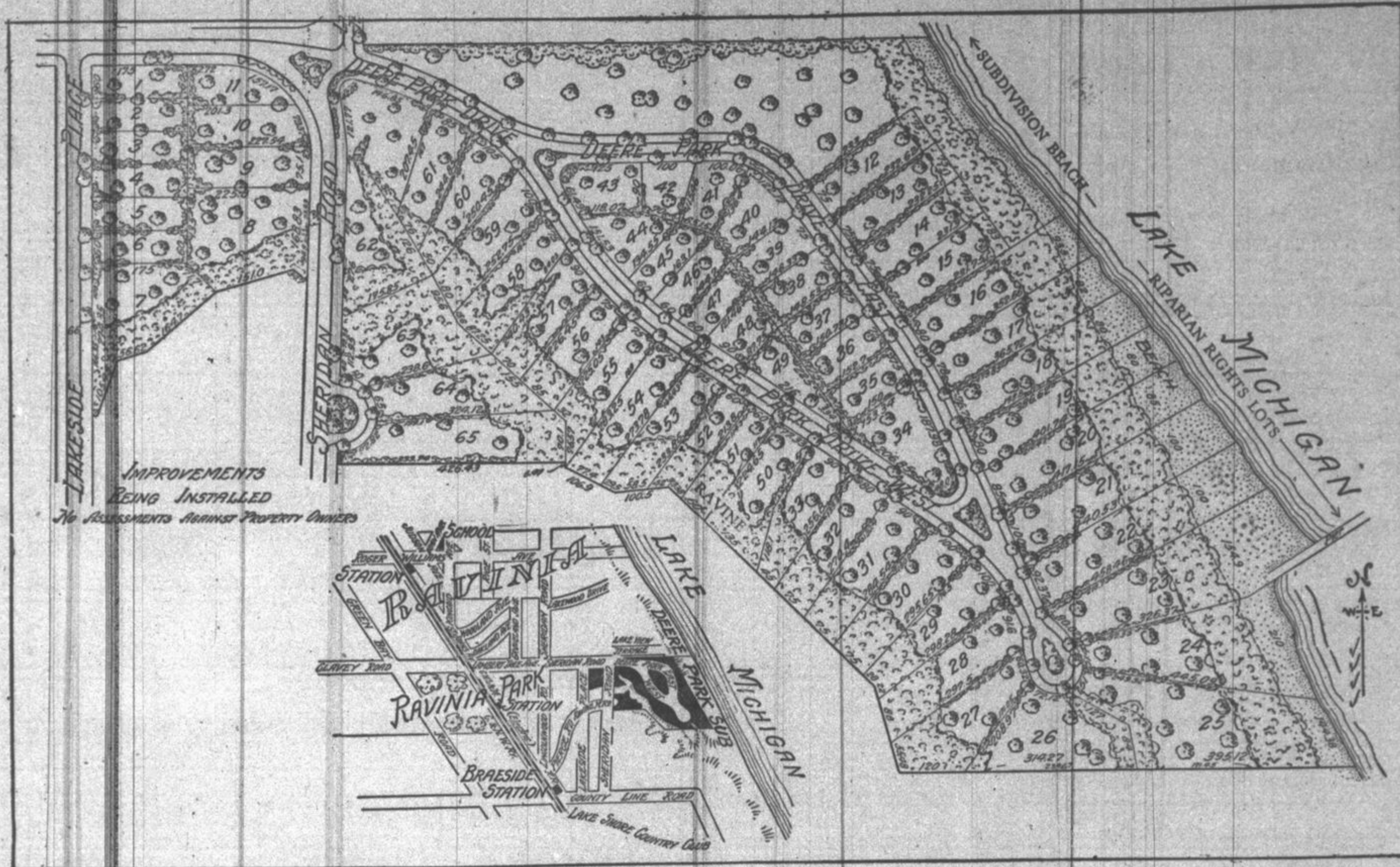


# Deere Park—Ravinia on the Lake



## Only Subdivision on North Shore With Riparian Rights Bathing Beach Provided for All Lot Owners

ONE-HALF mile north of the County Line Road and three blocks east of the entrance of Ravinia Park, home of outdoor Grand Opera, lies Deere Park. Its greatest width, one-third of a mile, is along the shore of Lake Michigan in the very heart of Ravinia—Highland Park—that region of beauty so well known to Chicagoans.

One of the country's best-known landscape architects is planning and developing this 42-acre tract of ravine-cut woodland into a unique and beautiful subdivision of 65 lots.

All improvements, including winding 18-foot concrete drives, sidewalks, sanitary sewer system, water, gas mains and electric lights,

are being installed and paid for. No assessments against lot purchasers.

Deere Park enjoys the best of transportation. The Chicago & Northwestern Railway, with its 61 trains daily, makes the trip in less than 40 minutes. The North Shore Electric Line, with its 111 trains daily, stops at Highland Park and Ravinia Park Station, less than 15 minutes' walk from the property. Sheridan Road, Route 42, will carry the motorist to Deere Park along a road of unusual beauty.

Take any Chicago & Northwestern train or North Shore Electric to Highland Park station, where a Baird & Warner auto-

mobile will meet you. If our car is not there, any Highland Park taxicab will take you to the property without charge. If driving, follow Sheridan Road—Route 42, to Green Bay Road—continue north on Green Bay Road to County Line Road—then east to Sheridan Road and north one-half mile to property. Subdivision offices on the premises.

Telephone Highland Park 1204;  
or Main Office, Central 1855.

BAIRD & WARNER, Inc.  
134 S. La Salle St., Chicago, Ill.

Gentlemen: Please send me descriptive book giving complete information on "DEERE PARK," the ideal subdivision.

Name \_\_\_\_\_

Address \_\_\_\_\_

The Ideal Subdivision offered by  
**Baird & Warner, Inc. Founded 1855**