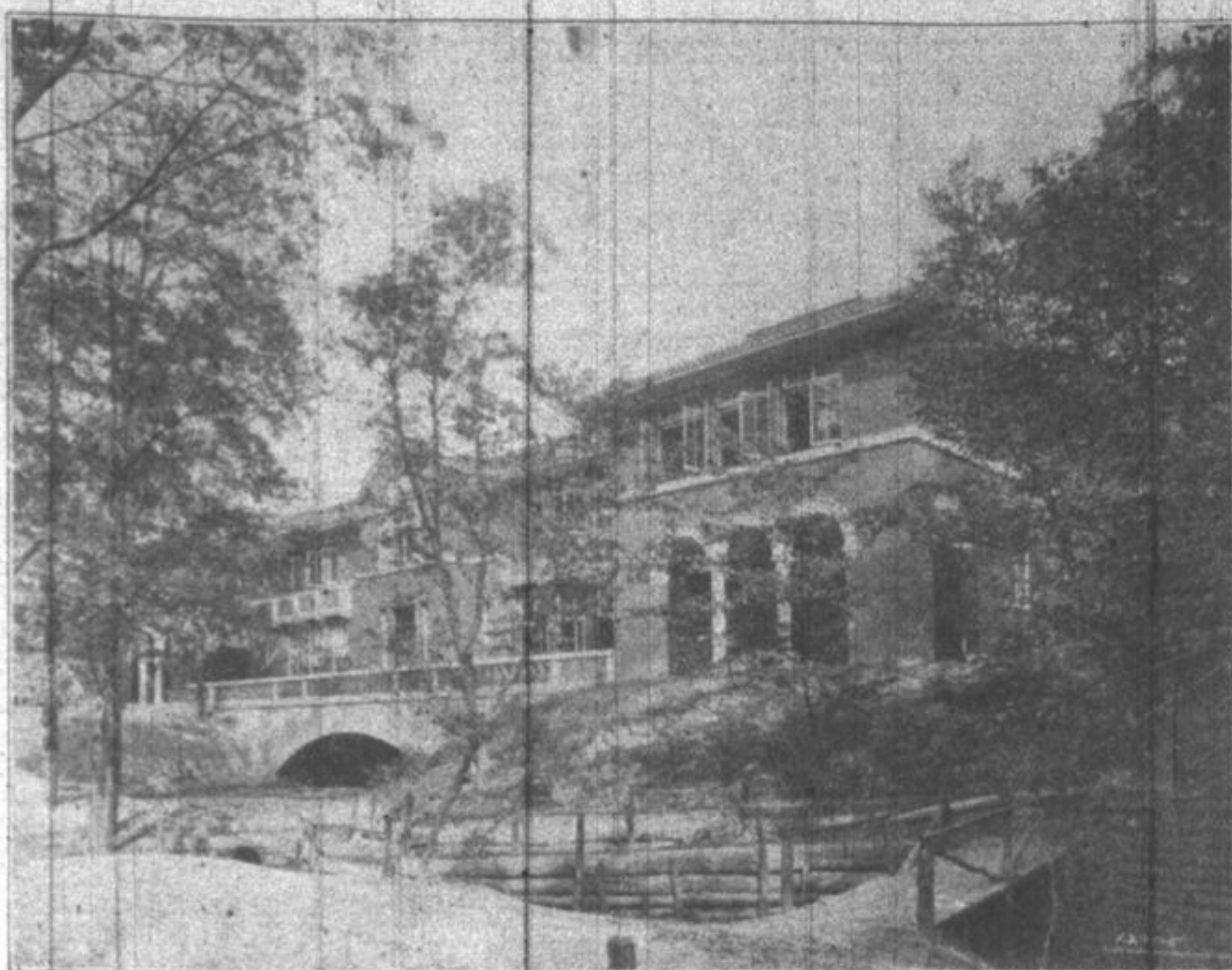


NEW ELM PLACE SCHOOL



Above is an especially attractive view of the new Elm Place Grammar school showing its location astride a ravine. The natural surroundings of this school building are notably picturesque, and in this respect it is one of the most uniquely situated schools in the country.

HAS RESIGNED



COACH JOHN L. ROTHACHER

Who has resigned his position at Deerfield-Shields to accept a place on the faculty of Springfield College, Springfield, Mass., as reported on page 1.

BRIEF NEWS ITEMS FROM LAKE COUNTY

NEIGHBORHOOD JOTTINGS

Interesting Happenings in This Part of North Shore And Short Notes from County Seat

The passenger steamer "Ottawa," of Holland, Mich., after fighting rough seas for five hours, limped into Waukegan port last week for repairs.

Mrs. Nelson Pullen, of Antioch, died last week after a long illness. She had lived in Antioch for many years and was well known in that section of the county. She was close to 80 years of age.

The National Commander in Chief of the Daughters of G. A. R. and her staff visited Libertyville fortress last night. Several of the Comrades from Chicago and Waukegan were also guests of Libertyville Fortress.

The Chicago, North Shore & Milwaukee railroad company filed a petition with the Illinois Commerce Commission at Springfield last week asking for a certificate of convenience and necessity to operate a motor bus line from Waukegan to Antioch and from Waukegan to Fox Lake.

While deputy sheriffs were searching for the person who recently stole a radio set from the home of Fred Vandt, near Grayslake, the thieves brought the receiving set back and left it where they had taken it.

The total vote cast in Lake county last Tuesday was 20,462, it was announced today by Lew A. Hendee, county clerk. This was a greater number of votes than were cast four years ago, the total vote at that time being 18,033. The vote last Tuesday was an increase of 2,429.

The vote for Harding in Lake county four years ago was 15,712 while Cox received 2,321.

The will of Miss Florence M. Perry, a school teacher, for many years prominent in the activities of First Church of Christ, Scientist, was admitted to record in Waukegan, last

week, in the probate court. Miss Perry's estate is valued at \$19,000, and she bequeaths \$1,000 to the church, the balance going to nieces, nephews, and a sister. Letters testamentary will be issued to her nephew, Arthur C. Perry.

MILLIONS OF DUST GRAINS IN THE AIR

Size and Number of articles to Square Inch Determined By Science

It requires more than 6,000,000 tiny dust particles to cover a glass plate one inch square, according to investigators at the structural materials research laboratory of the Lewis institute.

Although it would seem a hopeless task to count these millions of dust particles and measure their exact size, these Lewis institute investigators have carried out a series of tests in which these operations were performed.

The tests were conducted to determine the fineness of portland cement, and it was discovered that if average sized cement particles were laid in closely fitting rows it would require 6,000,000 to cover the same area.

In making the tests, samples of cement were blown up a series of brass tubes by compressed air. This operation separated the tiny particles and the sizes were then obtained by microscopic measurements.

The cement particles had already passed through the standard testing sieve specified by the government requirements. Such a sieve contains 40,000 holes to the square inch and is woven of bronze wire finer than a human hair.

The sieve is finer than silk and will hold water. Government standards require that 78 per cent of a given quantity of cement be fine enough to pass through this sieve.

Tel. 410

J. SMITH

Dealer in
JUNK

60 N. First St. Highland Park

their ownership of public utility bonds. This is true people's ownership under proper regulation, and the function of government is not to own and operate such utilities, but to regulate them under the police powers of the state.

DR. JAMES WATSON
DR. C. V. NICHOLS
Dentists
Sheridan Bldg., Highland Park
Telephone 374

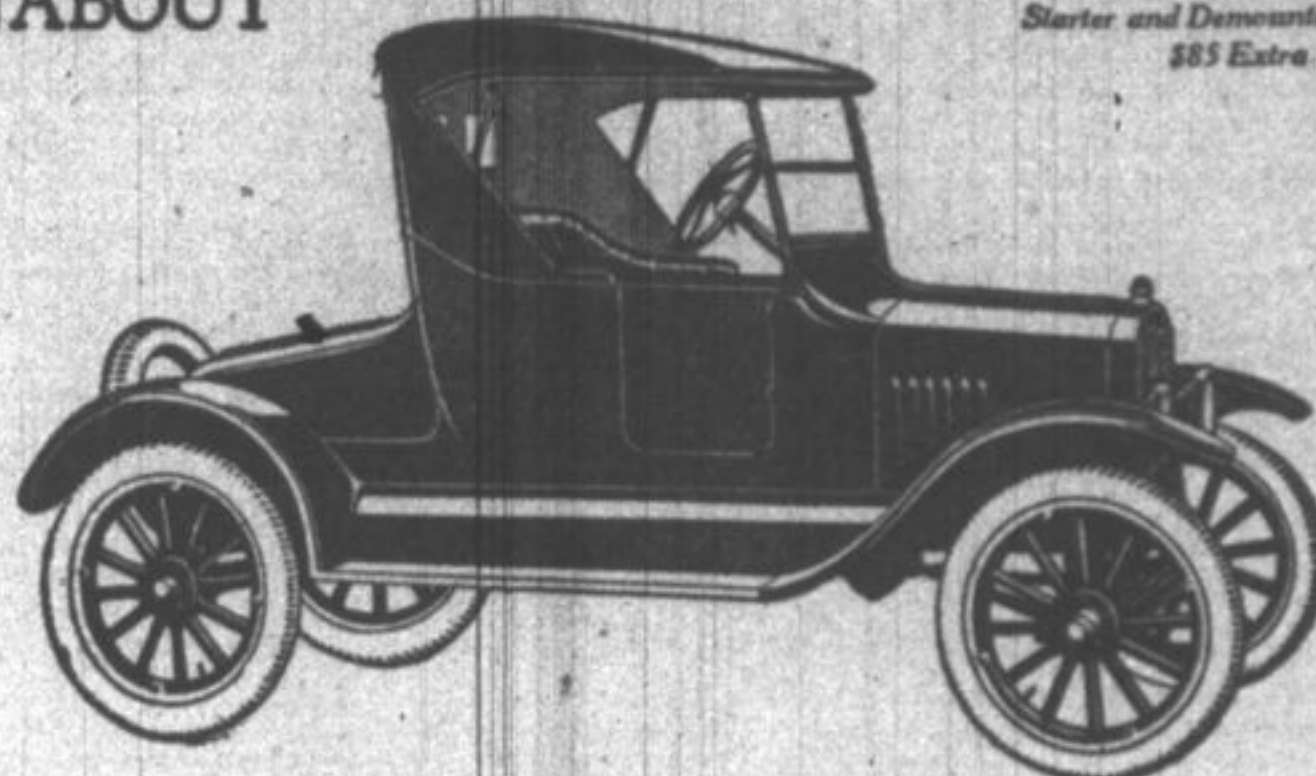
DR. B. A. HAMILTON
DR. A. J. WURTH
Dentists
Suite 4 H. F. State Bank Bldg.
Telephone 878
256 St. Johns Ave. Highland Park

Ford

RUNABOUT

\$265

Starts and Demountable Rims
\$85 Extra



The Lowest Priced Two-Passenger Car

The Ford Runabout is the most economical car for personal transportation known.

Priced lower than any other motor car, its maintenance and running expenses are in keeping with its present low cost.

To salesmen and others who average a high daily mileage in business, the Runabout has a special appeal both for its operating economy and its convenience in making city and suburban calls.

Ford Motor Company
Detroit, Michigan

See the Nearest Authorized Ford Dealer

Ford

CARS · TRUCKS · TRACTORS

NORTH SHORE LINE

Friendly Transportation

If a passenger pays his fare and is given in return transportation by a railroad, both have, perhaps, contributed all that is necessary.

But the North Shore Line desires more of its patrons than the bare cost of their journeys. It wants, also, their friendship.

To gain this friendship, the North Shore Line has made every possible effort to make its transportation service wholly deserving. It has made the service it offers the kind that inspires friendship.

It is willing to let the courtesy of its employees represent its own spirit toward the people that travel over its line. The North Shore Line wants more patrons, of course — but it prefers to put it this way — it wants more friends.

It feels that most of its passengers today are its friends. Many write voluntary letters of commendation — enthusiastic, encouraging. You may read some of them in the company's magazine. They express friendship in no uncertain terms.

Fast, frequent trains link Chicago's South Side, Loop and North Side to Milwaukee's business center, and to every town between.



The Charles A. Coffin Medal awarded to the North Shore Line for distinguished contribution to the development of electrical transportation for the convenience of the public and the benefit of the industry.

Next time—the North Shore Line!

Chicago North Shore and Milwaukee Railroad Company

Highland Park Ticket Office
Telephone 140

1924
S
ark, Illinois
order free.
49c
40c
20c
40c
40c
35c
30c
38c
TATOES
for
C
ng Rootbeer,
\$1.45
ng Gingerale,
\$1.45
r and Gin-
bot-
85c
ger-
et-
\$2.05
in-
\$2.05
net
\$1.55
\$2.00
rane's
each
25c
Extra
30c
ach-
69c
55c