

Basket Ball District Tournament

ILLINOIS HIGH SCHOOL ATHLETIC ASSOCIATION

At Deerfield-Shields High School, Highland Park, Illinois

Thursday, Friday and Saturday (Afternoons and Evenings) March 5, 6, 7

Thursday—Afternoon at 3:00, Evening at 7:00
Admission—Afternoon 50c, Evening 75c

Friday—Afternoon at 2:00, Evening at 7:00
Admission—Afternoon 50c, Evening 75c

Saturday—Afternoon at 2:30, Evening at 8:00
Admission—Afternoon 75c, Evening 75c

Season Tickets \$3.00. Season Tickets Guaranteed Admission to All Games

Not merely do colds keep many workers away from their jobs, but cold feet spoil many hopeful enterprises.

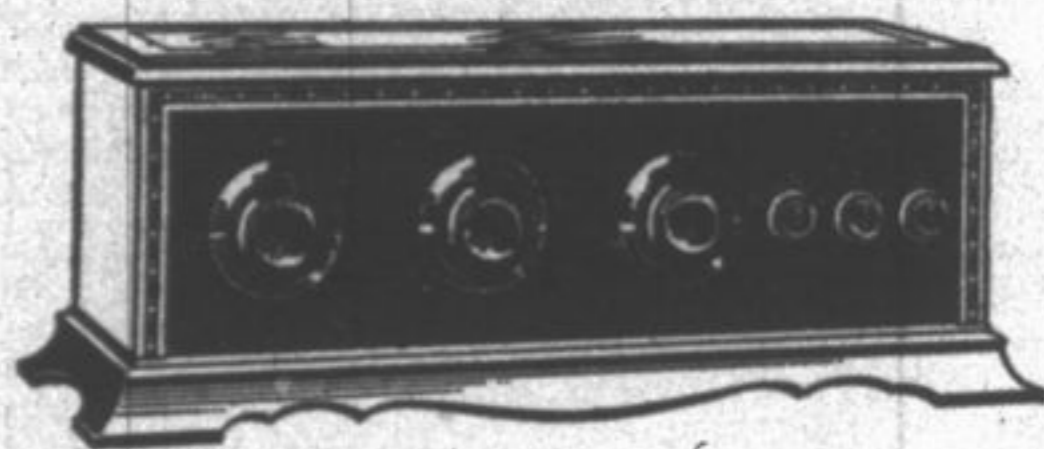
Wind is said to be tempered to the shorn lamb, but nothing said as to whether this includes the bobbed haired girls.

Favors for Valentine's Day, Lincoln's and Washington's Birthdays. New Lamps and Shades

Community Shop

"The more you buy, the more we give"

380 Central Avenue Telephone 544



Not a sound from Chicago—that's selectivity

If you live in the suburbs the first requisite in the radio set you buy is selectivity. For here there are 12 large local stations nearby going full blast at once which you must break through before you can reach outside.

The Deresnadyne will not only tune out any 11 of these stations and bring in the 12th, but tune out the 12 to bring in distant outside stations without interference from Chicago. That's selectivity. And it will bring them in on your loud speaker with amazing clarity and strength.

The Deresnadyne does not sacrifice power for selectivity or vice versa. It combines both qualities. It sets new standards of radio reception.

A demonstration will convince you. Come in and arrange for one.

De Luxe Model Price \$165 Without Accessories

NORTH SHORE RADIO SHOP
384 Central Street, Highland Park - Telephone 265

Andrews
Deresnadyne
DE-RES-NADINE - PATENTS PENDING
Radio Receiving Set

North Shore Radio Shop
384 Central Ave. Tel. 265

CHRISTIAN SCIENCE

Subject for next Sunday's Lesson sermon, "Soul."
Services are held in this church, 387 Hazel avenue, every Sunday morning at 10:45. Sunday School meets at nine-thirty o'clock and is open to pupils up to the age of 20 years. The Wednesday evening meeting, which includes testimonies of Christian Science healing, is at 8:00 o'clock.
You are cordially invited to make use of the reading room at 387 Central avenue, which is open every week day from nine o'clock in the morning until six o'clock in the evening and Sunday afternoon from two-thirty to six o'clock.

TRINITY CHURCH

The Rev. P. C. Wolcott, D.D., Rector.
The Rev. Philip W. MacDonald, M.A., assistant.
Sunday services:—
The Holy Communion—7:30.
The Church School—9:30 a. m.
Matins—11:00 a. m.
(The first Sunday in the month, the Holy Communion.)
Evensong—5:00 p. m.
Thursday and holy days, the Holy Communion—9:30 a. m.

UNITED EVANGELICAL

Green Bay road and Laurel avenue.
Rev. F. R. Cardwell, pastor.
9:30 a. m. Bible School, systematic Bible study is good for all.
10:45 a. m. Morning worship. Let us not forget Hebrews 10:25.
7:00 p. m. Christian Endeavor. Topic, "Striking Instances of the Friendliness of Jesus." Leaders, Wahlberg and Margaret Miller.
7:45 p. m. Evening sermon. Inspiring song service precedes.

GRACE M. E. CHURCH

North avenue and Lauretta place.
William B. Doble, minister.
8:30 a. m. Sunday School.
10:45 a. m. Morning worship.
3:00 p. m. Junior League.
6:30 p. m. Epworth League. Topic, "America and China's Revolution," Isa. 61:1-3.
7:45 p. m. Evening service.
Thursday, Feb. 12, at 8:00 p. m. in the church the Epworth League is giving an old-fashioned sing and social, "The Chimes of Yesterday" on Lincoln's Birthday.
Friday, Feb. 13, at 2:30 p. m., in the church edifice, a Valentine party for the ladies of the church and their friends.
Wednesday, Feb. 18, at 7:45 p. m. Mid-week prayer and praise service.

EBENEZER CHURCH

J. G. Finkbeiner, pastor.
9:45—Sunday school session. There were 161 in attendance last Sunday. Our aim is 170 for next Sunday.
11:00—Morning worship. Sermon by Rev. J. G. Eller and communion. Reception of members.
7:45—Evening services. President Elder Eller will preach. Despite the inclement weather on last Sunday night there was a splendid attendance at the evening service, but we expect a larger attendance on next Sunday night.
On Friday evening of this week there will be preparatory services to be followed by the session of the quarterly conference.
The pastor and people greatly appreciate the potted plant Cyclamen that graced the altar table on last Sunday furnished by Miss Edith Hansen.
Washington's birthday will be celebrated as usual by dolling up with red paper hatchets rather than by reading his address.

PRESBYTERIAN CHURCH

Friday, 7 p. m. Boy Scouts Troop No. 2 at Elm Place School.
Saturday, 7 p. m. Boy Scouts Troop No. 3 at Lincoln School.
Sunday, 9:45 a. m. Church School.
11 a. m. Morning worship. The Rev. Frank Pitt will preach. 11 a. m. Junior Congregation in the lecture room. 2:30 p. m. The pastor's Communicant Class for girls at the Manse. 3:00 The pastor's Communicant Class for boys at the Manse. 6:30 Young People's Society. Coach Peel of the high school will speak.
Monday, 10 a. m. Dorcas Society. Luncheon will be served at 12:30.
Tuesday, 7:30 Boy Scouts Troop No. 4 at high school.
Wednesday, 2:10 Religious education classes at Elm Place school. 8 p. m. Church Night Discussion Groups. This will be visitors' night, and all are invited to visit the classes. After a brief devotional service the classes will discuss topics as follows:
"How to appreciate the Bible's varied literary types," Rev. Frank Pitt, leader.
"The life of a great leader," Mr. E. S. Hall, leader.
"Ulfilas and Missions," Mr. N. G. Lenington, leader.
"Dealing with Questions," Miss Russell, leader.

WALTON LEAGUE MAY BE ORGANIZED HERE

National Organization With Big Membership Likely to Have Chapter Here
"The Walton" of fishing fame, will soon be at Highland Park as it is understood that a local chapter of the Izaak Walton League of America will be formed here.
Mr. John S. Bell, 916 St. Johns avenue, local sportsman, has been in communication with the national headquarters of the league and has received the necessary petitions for a charter in the organization to be filled out by local sportsmen.
The Walton league is a national body of sportsmen, who are fighting the game hog and the stream polluters and who are conducting an educational campaign among sportsmen of all classes to prevent the useless slaughter of game and game fish and careless burning of our forests.
Local sportsmen are interested in the league. It owns and publishes Outdoor America, a magazine which is received by each member of the league, and it is not run for profit but for the league political or religious affiliations.
The league has conceived and caused to be passed, state and national conservation legislation, and in every community where there is a chapter, stands fairly and squarely for sane conservation methods. There are 1200 chapters and about 100,000 members.

LIGHTS ON BOARD GUIDE OPERATORS

How is it that telephone operators know at once if you are calling from a public pay station or from an individual line or party line?
In a telephone exchange every little twinkle has a meaning all its own, and the type of service is designated to the operator by a symbol on the lamp cap that covers the line lamp which lights when the call is made.
Generally speaking, the plain white lamp cap is used for the type of service which is in a majority and, for that reason, the signals differ in different sections of the country. In most places a green lamp indicates that the party is calling up from a pay station. A white lamp cap might mean an individual line and a white lamp cap with a black cross might signify party line service.
On the keyboards and dord shelves of the switchboard the red, white and green lamps correspond to the color of the cords. These lamps have nothing to do with the class of service, but are used to assist the operator in associating the cord signals with the proper pair of cords.

RADIO STATION TO BE NEAR DEERFIELD

Power Plant of New Chicago Co. In This Vicinity; Studio In Wrigley Bldg.
A new radio super station, one of the largest and most elaborately equipped in the world, will go on the air from Chicago shortly to radiocast coast-to-coast and international programs, it is announced by the Radio-Phone Broadcasting corporation, which has been formed by several prominent Chicagoans to operate the station.
The station, to be known as "WHT," in the Wrigley building, will possess 5000 watts power, and, inclusive of equipment, will cost more than \$200,000, according to George E. Carlson, general manager. Mr. Carlson is a former commissioner of electricity of the city of Chicago.
Work on the studios, to occupy 6000 square feet of floor space on the first floor of the Wrigley building, has been started and negotiations have been completed for erecting the towers and power plant near Deerfield.

DEERFIELD WINS MORE BASKETBALL

Splits With Thornton and Takes Both Games From LaGrange; Leads League
In the basketball games with Thornton high school Saturday night Deerfield-Shields split results, the Deerfield Lights winning their game 27 to 13, and the heavies losing a close game, 18 to 19.
In the games with LaGrange the local heavies won, 17 to 13, and the lights easily took their game, 41 to 9.
Deerfield heavies still lead the league and in Class B they are tied for first place with Thornton leading.
In the tank contest with Proviso Friday night Deerfield swimmers easily won. The total of scores was Deerfield 37, Proviso 21.

HIGH SCHOOL BAND HAS NEW BASS DRUM

The Deerfield Shields high school band has a brand-new bass drum, taking the place of the old one which had outlived its usefulness. The new drum was made to order and is of the type used in large college and high school bands. The band is practicing faithfully on concert music, as they plan to enter the national high school band contest in April.

MOST AUTO CRASHES IN OUTLYING REGION

Most automobile accidents do not occur in business or congested districts the Illinois department of health points out, suggesting more care in driving in outlying districts as a safety hint to motorists.
Where there is a congestion or a considerable volume of fast traffic, drivers and pedestrians are careful and children do not play in the streets, it is explained. Drivers are less watchful after they get off heavily traveled streets.

BRIEF NEWS ITEMS FROM LAKE COUNTY

NEIGHBORHOOD JOTTINGS

Happenings Here and There in This Section of Country And Doings At The County Seat

Plans for the annexation of 2,670 acres of land located southwest, west and north of the present limits of Waukegan have reached a point where the proposition can be put to a vote within about six weeks.
The Chicago, North Shore and Milwaukee railway line has announced that work will be started as soon as possible this year on the construction of their new shops at the Waukegan terminal. The company plans to spend \$1,000,000 on new shops, and new stations, exclusive of the amount that will be spent on new equipment for the line, it is reported.
Camp Lawrence, the last camp of the Great Lakes Naval Training station to be constructed, is to be razed. All the efforts of the government to make this camp site at the lakks one of the best in the country went for naught, as the armistice was signed before it could be used.
Double parking of automobiles in Waukegan, especially in the business district, must cease. This was an order that was given out last week by Commissioner J. V. Balz.
Henry M. Underwood who for 45 years was a resident of Waukegan and who moved to Evanston three months ago to make his home with his daughter, Mrs. Lewis H. Williams, died suddenly last week.
The authorities of the veterans hospital at Great Lakes today wired a request to Washington for permission to install 100 additional beds in the veterans hospital as the place is at present filled to its entire capacity and more wounded veterans are applying for admission.

LIVING HIGH IN CONSTANTINOPLE

Has Reputation of Being 'The Most Expensive City in The World'
According to tabulations prepared by the Turkish government, Constantinople holds the doubtful honor of being the most expensive city in the world. The cost of living is 27 times higher than in 1924, and is twice as high as in London, Paris, or Rome.
Within two months, flour has doubled in price in Constantinople and nearby markets. Russia and various near eastern countries entered the American flour market during December and January with purchases of nearly a million barrels, owing to the serious local shortages in eastern Europe.
During the past year, the Near East Relief has shipped 3,058,976 pounds of wheat and corn flour from the United States to its orphanages overseas. Breadstuffs of all kinds are also purchased locally whenever prices are advantageous.

HAGUE COURT IS SEEKING ADVICE

H. C. Jaquith, director of the Near East Relief in Greece, has been invited to the Hague as an advisor in the controversy between Greece and Turkey over the exchange of populations, an aftermath of the Smyrna disaster. This international dispute has been placed in the hands of the Hague world court for arbitration. Mr. Jaquith had a large unofficial part in alleviating the misery and suffering which accompanied the refugees influx into Greece, directing the American relief work which is credited with saving 250,000 lives.