

Get Rid of
This
with
This



GET RID of your unsightly, unsanitary garbage can. Put your garbage in an odorless fly-proof, dog-proof, sanitary Majestic Underground Garbage Receiver. In addition to all its advantages, the Majestic will save you money. Comes complete with can. See us!

Local Hardware Dealers

Majestic

Underground Garbage Receiver

Out of Sight - Odorless - Fly-Proof - Sanitary

Moving - Baggage - Storage

Motor Truck and Van delivery to all points.

Household goods and Pianos moved by Experienced men.
Furniture Packed Crated and Shipped.

Phones 181 1103 147

Highland Park Transfer Co.

39 South St. Johns Avenue

Handiwork and Bakery Sale of Community Shop Goods

on
Wednesday and Thursday, June 6 and 7

from 10:00 a. m. to 6:30 p. m.

at MRS. A. J. METZEL'S
Sycamore Place, Highland Park

Tea served each afternoon
The more you buy the more we give

Unrest seems to be increasing in this country, particularly among the kids who have to go to school on circus day.
Claimed that men should not have to wear stiff collars, but how otherwise would some folks' weak heads get held up?

Canning season is now begun, and the girls are reminded that a good steamy kitchen is supposed to be helpful to the complexion.
The pen is greater than the sword, and the garden fork is worth more than the two of 'em put together.

GREATER POWER IS NEED OF INDUSTRY

BIG TRANSMISSION LINES

Requisite for Taking Care of Rapidly Increasing Demand Is Belief of Students of Problem

Unless the electric transmission lines of the United States are developed into great super-power systems, the nation will not be able to maintain its industrial supremacy and get its fair share of the world's trade, R. F. Schuchardt, electrical engineer of the Commonwealth Edison company, recently told the American Institute of Electrical Engineers at its convention in Pittsburgh.

Extensive Sale

Super-power development in Illinois and other middle western states has already gone forward on a more extensive scale than in any part of the country, Mr. Schuchardt said. He pointed out that Illinois is already criss-crossed with high power transmission lines which connect with each other, making possible the generation of electricity at the most economical points and its delivery wherever needed.

The transmission lines of Illinois are connected with those of Wisconsin, Indiana and other adjoining states. The middle-west is a pioneer in the inter-connection of transmission lines in a systematic and on a large scale, Mr. Schuchardt said.

U. S. Leadership

The leadership of the United States in the development of inter-connection power systems was demonstrated, Mr. Schuchardt continued, when engineering commissions appointed by European countries to study the electrical distribution problems came to this country to study the electrical power system which has been forming for several years.

Europe, faced with the problem of obtaining economical electric power to offset the great loss of man-power, found in the middle-west an inter-connecting system which will serve as a model for power development abroad, the speaker asserted.

"The inter-connection of transmission lines must be made on a greater scale than ever before," Mr. Schuchardt continued, "in order that the coal resources of the nation may be conserved and industry enabled to reduce production costs."

FIRST RAILWAY IN CHINA OVER GRAVES

MANY RELICS UNEARTHED

Many of These Now Exhibited in Chicago Art Museum and Are Interesting to Students

When the first modern steam railroad was built in China a number of years ago, the right of way ran over one of the sacred burial places of the ancient empire. The construction gangs, not having the same feeling of reverence for their sacred ancestors with which the Chinese are endowed, ruthlessly unearthed the venerated graves and brought to light thousands of curious and artistic objects. The Chinese, as well as the Egyptians, believed that the dead, in the other world, would have use for the possessions used in this life, for in the graves were found all sorts of useful household utensils and images of horses and other domestic animals which were to be used in the other world.

There has just been installed, in the new terrace addition to the Art Institute, a unique collection of objects found in Chinese graves. Some of them, such as the hand-turned bowl, date back over two thousand years, others are of the Tang dynasty, still others of the Sung dynasty. There is a strange model of a watch tower, characteristically Chinese, filled with tiny figures, evidently watching for the enemy. There is a temple jar of stoneware showing Buddha, with the devil under his feet, the sun overhead (supported on a bracket) and twelve attending priests arranged about the round base. There are many finely modelled vessels of pottery, fired in such a way that they resemble bronze. There are curious candle-sticks, well-heads, massively designed elephants and cows, and grotesque figures of various kinds.

REAL ESTATE TRANSFERS

Paul Starzyk and wife to Michal Tadel and wife, lots 8 and 9, block 16, Waukegan Highlands, North Chicago. WD \$10, stamp \$2.50.

Jennie Chantry and husband to James Gordon, lot 4, Clark & Latimers sub, Lake Forest. WD \$10, stamp \$7.50.

J. J. Toeller and wife to L. L. Kahn lot 121, Ravinia. WD \$10, stamp \$32.

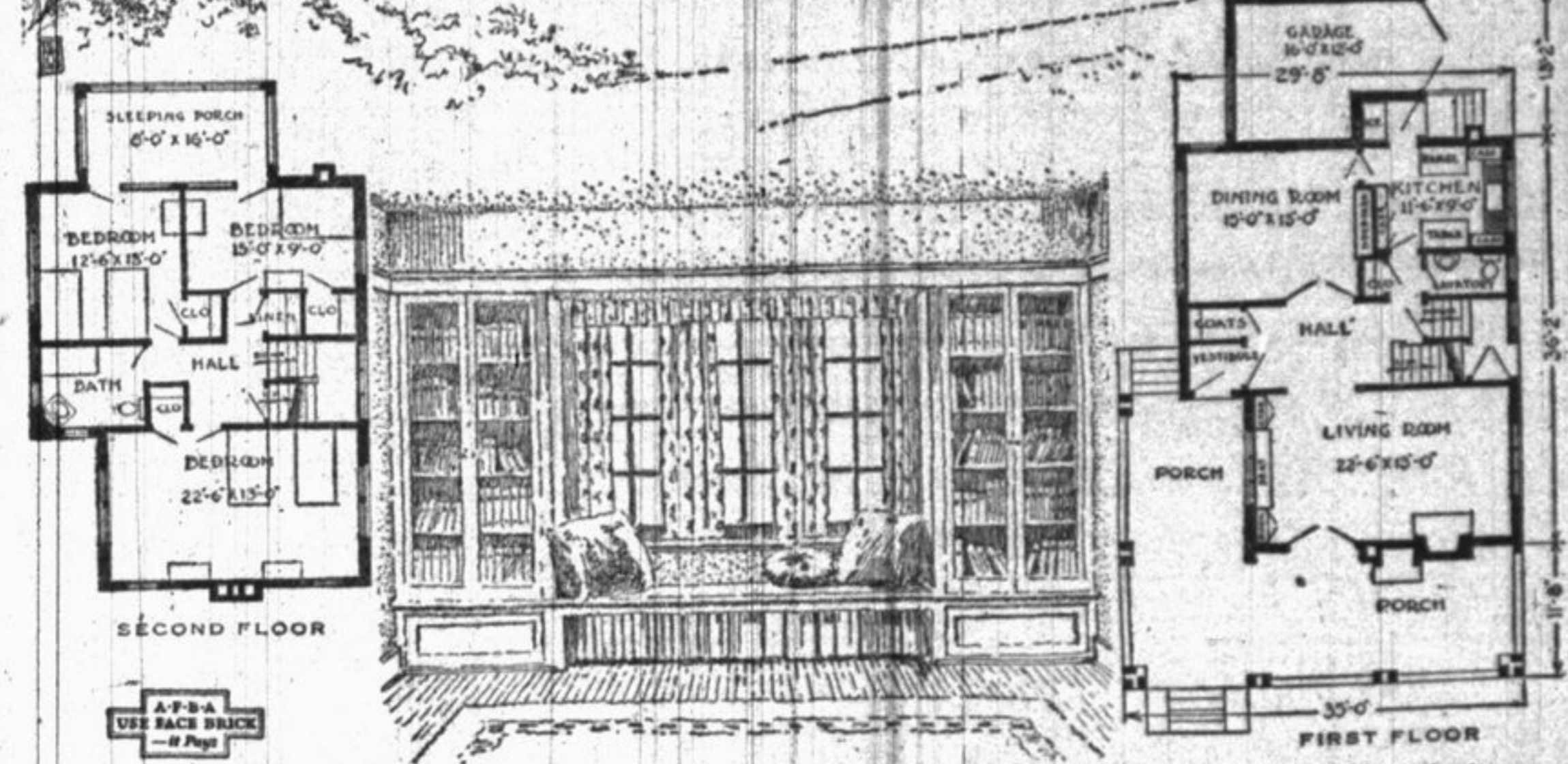
J. E. Woodman and wife to F. C. Bierstaedt, lot 3, Woodman's re-sub, Deerfield. WD \$7500.

Flora K. Tuttle and husband to A. J. Nason and wife, lot 2 Fessenden's sub in block 54, Highland Park. WD \$10, stamp \$62.50.

John Posing and wife to Alvin Greiner and wife W 22 ft. lot 7, Posing's sub, North Chicago. WD \$200.

Benj. Eisenberg and wife to H. M. Deacon, lot 10 and N 15 ft. lot 11, block 52, North Chicago. WO \$10, stamp \$1.

A "Western" House for Comfortable Living the Year 'Round



House No. 619

Designed for American Face Brick Association

Check over this house and you will find all the modern conveniences of an up-to-date home, and yet all included in such a way as to make the house an exceptionally economical one to build. Note especially the ingenious way in which the garage and sleeping porch have been made a part of the house.

The porch on this house is the principal external feature. It is so large and so placed that some portion of it will be shady at any hour of the day. Although it extends along two sides of the living room, it does not darken that room, which has a fine group of windows at the uncovered side.

The front part of the porch may be glazed in, if desired, and made into a sun parlor, as French doors connect it with the living room. The open fireplace on the porch will make it a delightful spot on early autumn days.

This house may be placed on a fifty-foot lot with space to spare on one side for the driveway to the garage, which is annexed to the rear of the house from which it is readily heated. The side entrance to the house be-

neath the stairway landing is convenient for motorists.

Entering through the porch and vestibule one finds himself in a large hall from which the stairs ascend to a well-lighted landing. On one side is the living room with its fireplace, bookcases, and window seat. On the other side is the dining room with its group of casement windows and a built-in sideboard. From the hall one may go to the kitchen by way of a short passage from which opens a convenient lavatory and a second coat closet.

Special attention is called to the arrangement of the kitchen. The sink is under the windows, with cabinets on either side, and is but one step from either the range or table. The refrigerator is in the entry near the dining room door.

There are three splendid bedrooms with closets, a large bath, and sleeping porch on the second floor.

The house has a full basement with heating plant, fuel bins, laundry, and storage and vegetable rooms.

The Local Telephone Directory



Goes to
Press Soon

In the interest of good
service subscribers
are requested to call

The Telephone Company

and give notice of any changes or
corrections that should be made
in their listings

ILLINOIS BELL TELEPHONE
COMPANY

