

Moving time brings problems in floor coverings which find economical solution in our special offerings of

# ORIENTAL RUGS

The question of cost and economy should be considered in relation to the value received in length of service and satisfaction. Good Oriental Rugs have attributes similar to those of fine musical compositions—the more familiar they become, the more you appreciate and love them. Then, too, they enable you to effect the most exquisite color harmonies—to create an atmosphere of homey warmth and charm that can't be achieved in any other way.

These Are Some of the Rare Values Offered

Gorevan, 12 ft. 6 x 9 ft. 6	\$175	Mahal, 12 ft. x 8 ft. 10	\$260
Gorevan, 14-ft 10 x 9 ft. 7	195	Mahal, 12 ft. 2 x 9 ft. 3	305
Gorevan, 11 ft. 3 x 10 ft. 7	175	Mahal, 12 ft. 2 x 8 ft. 10	305
Chinese, 12 ft x 9 ft. (Blue)	300	Mahal, 14 ft. 4 x 9 ft. 7	300
Chinese, 12 ft. x 9 ft. (Rose)	300	Mahal, 14 ft. x 9 ft. 9	320
Chinese, 12 ft. x 9 ft. (Brown)	300	Mahal, 11 ft. 7 x 8 ft. 6	316
Melaz, 12 ft. 6 x 9 ft. 5	380	Mahal, 12 ft. 4 x 8 ft. 9	260
Oushak, 12 ft. 10 by 9 ft. 3	180	Anatolian, 13 ft. x 10 ft.	420

Rugs Cleaned  
Stored and  
Repaired

For the protection of our customers' interests, we conduct a perfectly equipped department for expert cleaning, repairing and storing of Oriental Rugs. Charges moderate, and absolute safety and satisfaction assured.

An inspection of our Rugs does not imply any intention to purchase. We welcome visitors as guests.

**Nahigian Brothers, Inc.**  
Direct Importers  
Established 1890

28 and 30 South Wabash Avenue

CONSTANTINOPLE

CHICAGO

SULTANABAD

## Share in the Earnings of our Substantial Business

By putting your savings or ready cash in our company, thru the purchase, either for cash or on monthly payments, of the cumulative preferred shares offered at this time you can participate in the earnings of this big progressive company.

A Safe  
Investment  
With a  
Satisfactory  
Return

**7% Without Worry**

Dividends are mailed quarterly to stockholders promptly without delay or inconvenience.

Let us give you details of this investment.

**North Shore Gas Co.**

### SCHOOL ENROLLMENT EXCEEDS CAPACITY

MORE PUPILS THAN SEATS

Total of 43,478 More Children in Schools of State This Year Than Last; Boys in Majority

The total number of pupils enrolled in Illinois public schools last year was 43,478 more than the seating capacity of the schools in use, according to school statistics for the year ending June 30, 1922, made public by Francis C. Blair, state superintendent of public instruction. The enrollment was 1,269,208. The number of minors of school age in the state was 1,800,055.

Other Uses

Of the 14,814 school houses in the state, 12 of them are not in use, but the school districts rented 304 other buildings for school purposes, the report discloses.

There were 28,816 more boys than girls enrolled in the public schools, the boys numbering 638,912 and the girls 610,296. These figures included both elementary and high schools.

While in the total enrollment for elementary and high schools the number of boys exceeded the number of girls, in high school enrollment the reverse was true. In high schools the girls numbered 84,708, while the boys totalled 78,839. A similar ratio prevailed in high school graduates, the girl graduates numbering 11,365 and the boys 9,202.

Boys Outnumber Girls

In the lower grades, the boys outstripped the girls in numbers, but by the time the promotion to high school came, the girls took the lead. The number of girls promoted to high school was 49,789, and the number of boys 37,114.

High school enrollment gained 16 per cent over the previous year while elementary schools gained but 2.4 per cent.

The average cost of educating a child was \$82.80 a year, including all expenses. For current expenses only the cost was \$63.34.

From Yearly Reports

The statistical report was compiled from the yearly reports of 38,000 teachers. These reports are assembled by the township treasurers of each county. These reports, with a report from the county treasurer are compiled by the county superintendent and the reports of the 102 county superintendents are finally assembled in the office of the state superintendent of public instruction, where final report covering 200 separate items is compiled.

### RUSH FOR LICENSES FOR AUTOMOBILES

Demand for New Permits Largely Increased Since Sheriff's Warning

An unprecedented rush for licenses for automobiles has marked the past week. Men and women are coming in from all sections of the county and filling out their blanks for their autos to dodge the wrath of the sheriff and justice courts and eventually a fine.

The campaign opened by the sheriff recently to force the auto owners to obtain their 1923 plates had its effect and there are now more in the city that are living within the motor laws than ever before, according to conservative estimates.

About 100 people were picked up and given notifications of arrest during the week and besides their obtaining licenses a number of others who were overlooked were also sent scurrying for new plates.

The Emmerson office at Springfield has been a busy place during the last week as the move to force the motorists to buy plates has been almost state wide. It is believed that Waukegan will be 100% in another week.

### INFORMATION ABOUT ACCIDENTS GIVEN

Do you know that:  
A person is twice as likely to die from accident as old age?

Twelve million people are accidentally killed or injured yearly?

More people are kept from work by accidental injuries than are idle from lack of employment?

Every five minutes one person is accidentally killed?

One person out of every eight sustains an accident during the year?

Five times as many persons are accidentally killed or injured each year as die from natural causes?

One thousand three hundred eighty persons are accidentally injured every hour?

More than fifty thousand people are injured as a result of fires each year?

More than twelve thousand persons are killed in automobile accidents each year?

More than eighty thousand persons are killed annually in railroad accidents?

More than six thousand persons are accidentally drowned each year?

More than five thousand persons are killed each year as a result of fires?

Boiler explosions are responsible for the death of more than four hundred persons and the injury of five to six hundred others each year?

If the fire bell rang for every accident as it does for every fire, it would become a public nuisance?



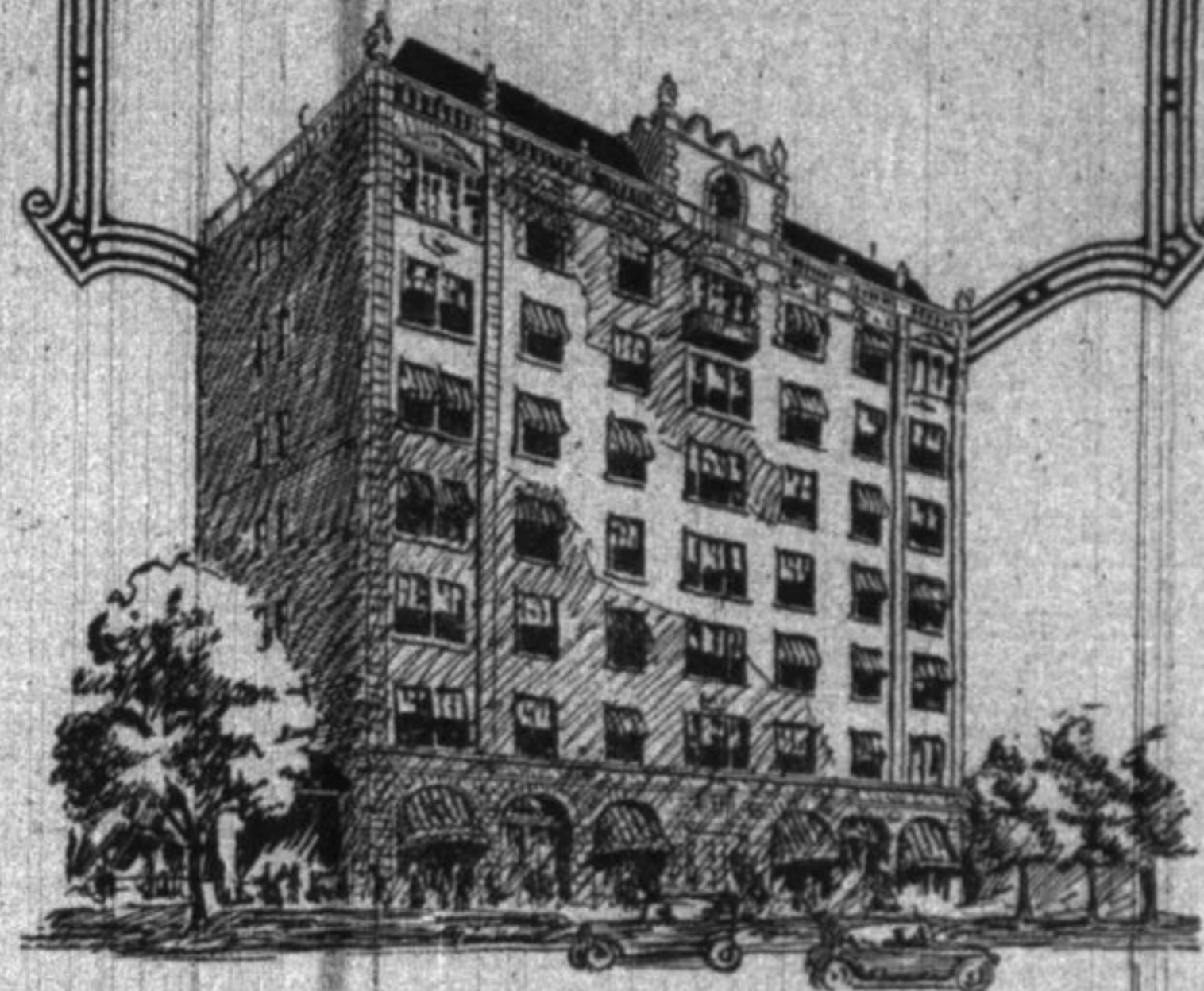
## Library Plaza

EVANSTON, ILLINOIS

Famous For Its Fine Food & Genial Accommodations

Folks who know this residential hotel praise its attractive living quarters, attentive service and excellent cuisine. There is no other place quite so enjoyable for a long or short stay or the occasional dinner out.

For Reservations Telephone Evanston 6800



It Starts Promptly in Cold Weather

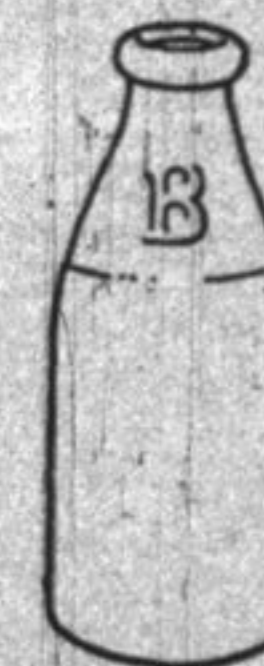
DODGE BROTHERS  
MOTOR CARS

**A. G. McPherson**

HIGHLAND PARK, ILLINOIS  
Phones: Highland Park 120 - 121

### For Better Baking

Use Bowman's MILK. It is rich in cream—fresh and pure. Adds a deliciousness to vegetables and gravies without impairing the natural flavor.



BOWMAN'S MILK is whole milk—nothing has been added to it—nothing taken from it.

**Bowman Milk**  
DAIRY COMPANY  
Bottled in the Country

### PROHIBITION

Do you want it overthrown?  
Do you realize how great have been its benefits?  
Political and self-serving interests are active in this matter which touches vitally every home. The only way you can cope with the situation is to be correctly informed.

**THE CHRISTIAN SCIENCE MONITOR** gives non-partisan, fearless and accurate news on the subject of prohibition. This information is of great value.

SUBSCRIPTION RATES

One year ..... \$9.00 Six Months ..... \$4.50  
Three Months ..... 2.25 One Month ..... 75c

Subscriptions will be received by the

The Christian Science Monitor Committee

of the  
**First Church of Christ, Scientist**

387 Central Avenue Highland Park, Illinois

Sample copies may be obtained at the above address