

## Compare This Sound Investment With Others

**A Sound Investment With a Satisfactory Return**

Compare the facts relative to the 7% Preferred shares of the North Shore Gas Company with other really sound investments brought to your attention.

The object of investing in successful utility properties that you can see is one that has appealed to our citizens.

The investment is safe. It is backed by a substantial property and ample earning power. The company is substantial and is growing steadily because it supplies a commodity necessary to everyday life of the public, and essential to the operation of many important industries. Its business is of a character that even in the dullest times it does a satisfactory business.

It will pay you to get the facts concerning this investment.

# North Shore Gas Co.

### NOTABLE CHINESE ART COLLECTION

SHOWN AT ART INSTITUTE

Classic Persian Art Display Is Also Highly Interesting; Features of These Exhibits

The Chun ware loan collection now being shown in the Oriental Galleries of the Art Institute of Chicago was formed by China's greatest art connoisseur, the Emperor Chien Lung—1736-1795 A. D. It is said to be the most important exhibition of this ware ever brought together. It is made in various shapes, bulb dishes, flower pots, incense burners, bowls, etc.

The color of the glaze, which is the crowning glory of this ware, varies from a dove gray, lavender, crushed strawberry, dapple-purple and crimson, to a crab-shell green. This group contains the three most important pieces of Chun ware known. The two flower pots on the lower shelf of the glass wall case stand, in color, form and technique, as the supreme expression in this field. The center bowl shown was used by the Empress Dowager herself for ablutions before the sacrificing, and was carried with her wherever she went. Of the three great collections of Imperial Chun Yao accumulated during the past forty years, this collection surpasses them all.

#### Persian Art

The other collection mentioned above is that of classic Persian art, nearly all of which came from the ruins of the city of Rhages, Persia, and Raqqa, Mesopotamia, but includes also nine great 7th century miniatures from the Shah's own private collection, in Teheran. Lovers of near Eastern ceramics are here given an opportunity of studying what is undoubtedly the finest collection of Medieval Mohammedan pottery ever brought together by either a museum or private collector.

In the second gallery, to the right as one enters the new galleries in the museum, there rests, in a glass case, a large Rhages pottery vase, with high relief decorations, made about 1300 A. D. This great piece, admittedly the most important specimen of Persian pottery in existence, is 26 inches in height and 15 inches in diameter. The hand-modeled decoration of friezes of human figures is one of the finest known specimens of Mohammedan sculpture. It is most exquisitely colored.

#### Found in Pieces

This great vase was discovered on the site of the ruined city of Rhages, which the Mongols destroyed in 1221 A. D., and in which invasion history tells us over 700,000 people were massacred. It was found more than forty feet below the surface of the ground, in 76 pieces. More than four years were consumed in excavations before the pieces were all found, and they were then taken to Paris and carefully put together. Over \$30,000 was spent in restoring this vase to its present perfection. It is said to surpass in quality the famous Basilewski vase in the Hermitage, Petrograd.

Included in the Rhages group are four bowls in polychrome decoration, one of which contains, on the inside, portraits of the Emperor and Empress of China, on a gold ground, with beautifully polychrome decorations. It is a superb example of Persian portraiture on pottery. Another bowl shows forty-two miniatures of dancing figures, drawn in the most finished style, similar to the finest parchment paintings of this period.

#### Finest Examples

In another case in the same room are two extremely rare Ninth century Raqqa bowls and four beautiful 12th century Raqqa pieces. Lovers of the art of pottery will find here the finest examples of the sensuous art of Mesopotamia in existence.

Mr. Wilson P. Foss, in describing this collection says: "Mohammedan potteries are different from both the Greek and the Chinese. They seldom surprise by the beauty of line or perfection of materials. Their sandy bases and glazed earthenware are very brittle, poor, and fragile. And yet Mohammedan pottery is an achievement as high as any in the history of ceramics. The basis of this marvelous beauty, of course, is color—color in the widest sense of the word; color produced not only by glazes; deep cobalt blue, rich turquoise, intense manganese purple and the opalescent, and light greenish hues of creamy white. Mohammedan pottery is like music or poetry; it is an expression of moods and it expresses these moods through color."

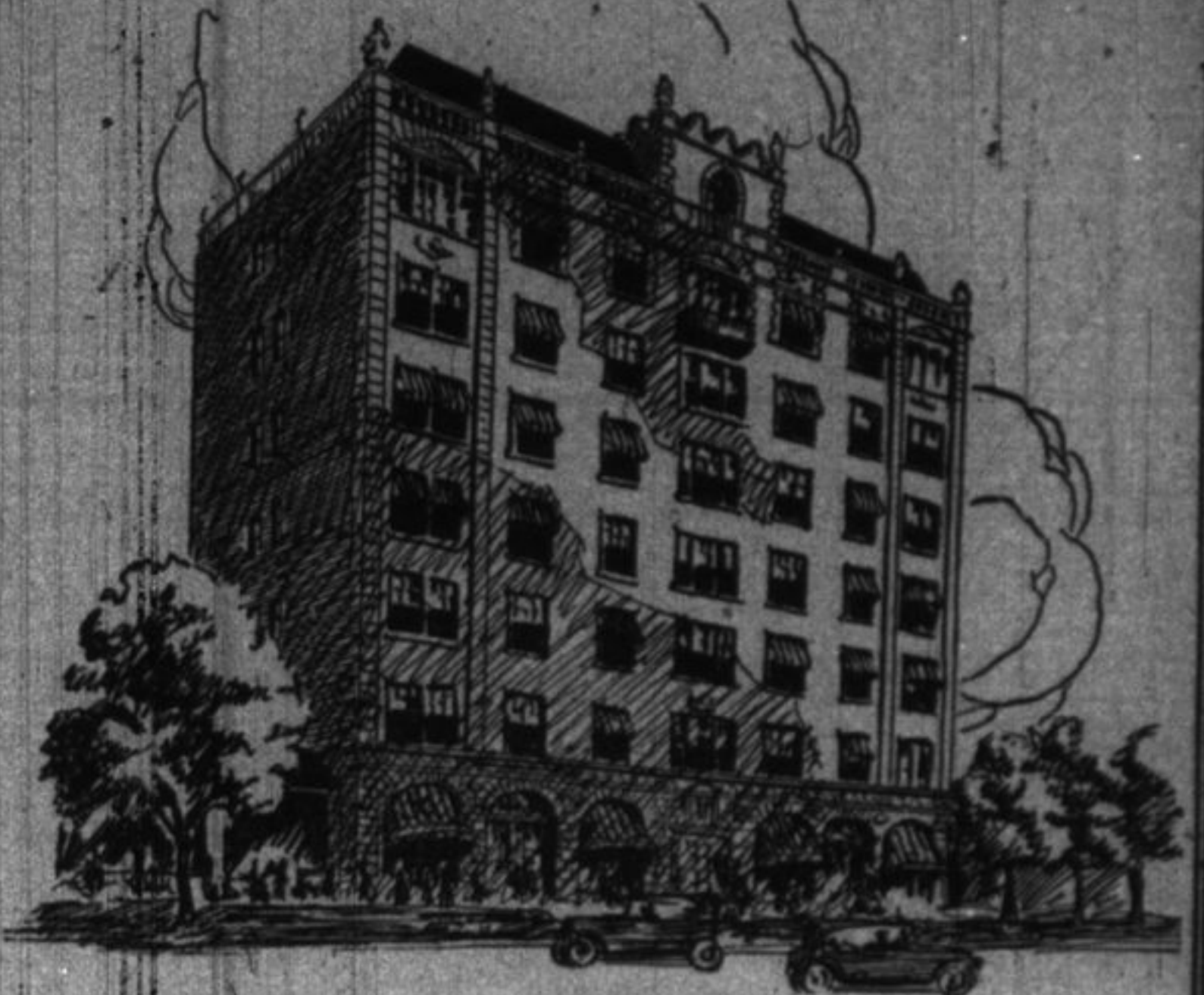
#### VETTER

**ELECTRIC COMPANY**  
Electrical Contracting  
and Jobbing

We repair anything electric  
Fixtures Repaired and Re-wired and Installed  
Radio Outfits Installed

Phone 757-W  
Highland Park

### Evanston's Newest and Finest Hotel



## Library Plaza

An attractive home for individuals or small families who want the same service rendered by the finest hotels but intermingled with a home atmosphere that adds to the comfort of a short or long stay.

There are attractive terms for long leases. Come and enjoy our restaurant or cafeteria.

For Reservations  
Telephone Evanston 8000

Orrington Avenue, north of Davis Street, Evanston

## Special Sale Friday and Saturday, March 2 and 3

# RAPP BROTHERS

Phones H. P. 1677-1678

24 N. First St., Highland Park, Ill.

NOTICE—Ask to have our regular circular mailed to you. Leave name and address at office. We deliver your order free

<b>POT ROAST</b> 20c	<b>PORK LOINS, LB.</b> 19½c	<b>GRAPE FRUIT</b> 8 for 50c
<b>RIB LAMB CHOPS</b> 45c	<b>PORK SHOUL.</b> 15½c	<b>STRAWBERRIES</b> qt. 59c
Legs Spring Lamb the lb. 35c	White Meat Tuna Fish the can 28c	Codfish, boneless lb. box 38c
Veal Steak the lb. 60c	B & M Fish Flakes large cans 23c	Del Monte Sliced Peaches, large can 43c
Plate Corned Beef the lb. 10c	Fresh Shrimp the lb. 35c	Del Monte Peaches (halves) large can 43c
Best Native Round Steak, the lb. 30c	Halibut Steak the lb. 45c	Sliced Pineapples the can 28c
Fresh Spareribs the lb. 15c	Salmon Steak the lb. 35c	Pure Maple & Cane Syrup, qt. can 50c
Sour Kraut the qt. 15c	Fresh Whitefish the lb. 49c	Pure Maple & Cane Syrup, the pt. can 25c
Calf Sweet-Breads the lb. 75c	Lake Trout the lb. 35c	Philadelphia Scrapple the pkg. 25c
Divided Cloverbloom Butter, lb. 63c	Frying Oysters the qt. 80c	Favorite assortment Cookies, large pkg. 75c
Best Native Sirloin Steak, the lb. 42c	Stewing Oysters the qt. 70c	Swedish Wafers the pkg. 38c
Home-made Sausage Meat, the lb. 28c	Smelts the lb. 30c	Sand. Swiss Cheese the lb. 65c
Norwegian Sardines in pure olive oil, can 18c	Tall cans Pink Salmon the can 15c	Tall cans Red Salmon the can 25c
Del Monte Asparagus Tips, the can 45c	Sun Maid Raisins the pkg. 18c	Wet or Dry Shrimp the can 19c

Angelus Marshmallows 3 pkgs. for 25c	Large Grape Fruit 2 for 25c	Sweet Navel Oranges the dozen 35c 45c 55c
Ripe Olives the can 25c	Monarch Catsup large bottle 19c	Cooking Apples 4 lbs. for 25c
Dromedary Dates the pkg. 19c	Peas, reg. 15c can 6 cans for 75c	Eating Apples 3 lbs. for 25c
Tiny Ex. Sifted Peas, the can 25c	Corn, reg. 15c can 6 cans for 75c	Brussel Sprouts the box 35c
Marshmallows the pkg. 10c	College Inn Soups the can 15c	Romaine Lettuce the head 18c 25c
Canned Beets No. 3 can, each 16c	Quaker Oats large pkg. 29c	Carrots, the lb. 5c
Apple Butter the jar 15c	Farm House Cocoa lb. pkg. 25c	White Turnips the lb. 5c
Sweet Mixed Pickles large jar 25c	Pumpkin, No. 3 can 3 cans for 35c	Dry Onions 5 lbs. for 25c

TISSUE TOILET PAPER 3 rolls for 25c

Orders that are taken Friday for Saturday delivery will be delivered by Saturday morning.

CAMPBELL'S SOUPS 3 cans for 28c

## Free Lecture

First Church of Christ, Scientist, of Highland Park, Illinois

Announces a Lecture on

### Christian Science

by

**Dr. Walton Hubbard, C. S. B.**

of Los Angeles, California

Member of The Board of Lectureship of The Mother Church, The First Church of Christ, Scientist, in Boston, Mass.

Friday Evening, March 2, at 8:00 p. m.

in the

Church Edifice

Hazel Avenue, one-half block east of St. Johns Avenue

The Public is Cordially Invited

## Morning, Noon and Night

Drink plenty BOWMAN'S MILK—any time of the day. It satisfies hunger without taxing the digestive organs.



Insist on BOWMAN'S MILK. It is perfectly pasteurized and bottled in the country—the ideal method of handling milk.

**Bowman Milk**  
DAIRY COMPANY  
Bottled in the Country