

SILVERWARE REPLATED AND REPAIRED AT MANUFACTURER'S PRICES



We do marvelous things with worn and battered Silverware. Do you know that right in the loop there is the most efficient and up to date silver-plating and repairing

plant west of New York, where you may bring that worn Silverware of yours and have it made over like new?

Among our satisfied customers are many of Chicago's leading families and most of our finest clubs and hotels. Why not permit us to put your silverware in first class condition for the approaching holidays?

We also specialize in high grade engraving on jewelry and silverware such as letters, monograms, seals, coats of arms, etc. We repair and plate mesh bags in white, yellow or green gold as well as silver. No job is too small to command our interest.

QUALITY WORK AT PRE-WAR PRICES

Alt Silver-Plate Co
Manufacturing

Fifth Floor, 20 East Randolph Street
Opposite Marshall Field & Co. Tel. Randolph 3730

Order By Long Distance

That out-of-town order, which must be delivered quickly, and on which the price must be known at once, can be placed best by Long Distance telephone.

Over Bell wires the buyer can state exactly what he wants and be told immediately the price, and conditions of delivery. He can determine at once if the commodity he wants is obtainable within his time limit and, if not, what substitute the seller has to offer.

In a word, before he hangs up the receiver, the buyer can know what he is getting, at what price, and how soon delivery may be expected.

"Station-to-station" service is a money and time saver. It is explained in the current issue of the Alphabetical Telephone Directory.

ILLINOIS BELL TELEPHONE COMPANY



When You Come to Do Landscape

YOU KNOW WHO TO PHONE—HIGHLAND PARK 523

- Clearing
- Excavating
- Grading
- Lawns
- Gardens
- Formal and Informal
- Planting and Transplanting
- Terrace
- Driveway
- Walks
- Fencing
- Spraying, etc.



Charles Fore Nurseries
SPECIALISTS IN
Landscape Gardening

- Evergreens
- Trees
- Shrubs
- Vines
- Roses
- Hardy Flowers
- Fruit-Trees
- Small Fruit
- Manure
- Black Soil
- Trimming
- Rustic Work
- Pools
- Rockery, etc.

Prairie Avenue, Highwood, Ill. Phone Highland Park 523

Daily Motor Express To and From Chicago

Especially Convenient for Summer Residents Moving Into Town.
No order too small for our attention.
Local Phone Highland Park 227

Chicago Loading Place 222 N. La Salle St.
WE MOVE ANYTHING ANYWHERE

Pasquesi Bros. Motor Express Co.

Tel. Highland Park 227 Chicago Tel. Main 3949

SWAN ELECTRIC CO.
Electric Contractors
Fixtures and Supplies
Telephone Highland Park 1336
651 Michigan Avenue
Highland Park

SOLD EVERYWHERE
RYZON
BAKING POWDER
you use less

BRIEF NEWS ITEMS FROM LAKE COUNTY

NEIGHBORHOOD JOTTINGS

Happenings of Interest Here and There About the County Recent County Seat News Notes

The Orpheum Theater on South Genesee street, Waukegan, has been purchased by Attorney A. F. Beaubien of that city, according to the terms of a deed filed in the office of the county records in the court house.

A sweeping investigation of Waukegan township by the state health department in connection with breaking quarantines, threatens scores of arrests and heavy fines, according to information received here today.

Although Edward Mawman of Lake Bluff has received a promotion to the position of inspector for the Chicago & Northwestern railroad company, which will necessitate his traveling over the Wisconsin division, he expects to be able to finish out his term as supervisor from Shields township.

The sale of two tracts of land lying south of the Glen Flora Country club property, belonging to Lee McDonough and Charles F. Ingalls, was consummated last week by R. J. Douglas, representing all the principals in the transaction, the purchaser being William H. Johnson, of Glencoe.

That she has been incarcerated in a madhouse for three years, although sane, was the charge made by Mrs. Elizabeth I. Powell, wealthy Waukegan woman, who was committed to the Elgin insane asylum three years ago, when she appeared before Judge Hurley in superior court, Chicago, at the habeas corpus hearing which had been brought to obtain her release from the asylum.

Eloping from Manawa, Wis., a distance of more than 200 miles, a youthful couple from the Wisconsin town were halted by the Waukegan police when they applied for a marriage license at the office of County Clerk Lew Hendee last week. The couple were taken to the police station where they are being detained pending arrival of relatives.

Some of those who are issuing hunting licenses in certain parts of Lake county are due for a jolt according to Deputy Game Warden, Henry Kern of Waukegan, who is conducting an investigation. He has discovered that some of those who are issuing the licenses are neglecting to use the care they should in determining whether or not the applicants are entitled to receive the licenses.

SHOW ENTRIES SET RECORD THIS YEAR

Coming From All Parts of the Continent for Live Stock Exposition

Individual entries for the International Live Stock Exposition to be held in Chicago, December 2nd to 9th, have exceeded all previous records in the history of the show. Not only will larger classes of cattle, horses and sheep face the judges than ever before but the quality of the animals will surpass any previous exhibition on the American continent.

Even before the entry books were closed, it was foreseen that the high water marks established by preceding Internationals were doomed to be wiped out by the flood of applications which poured in from all parts of the land. When the final count was made it was found that the anticipated increase had materialized beyond all expectations, considerably over five thousand individual animals having been listed. By the time the entries in the carload classes are closed November 25th it is expected that the total number of cattle, horses, sheep competitions will have far exceeded the ten thousand mark.

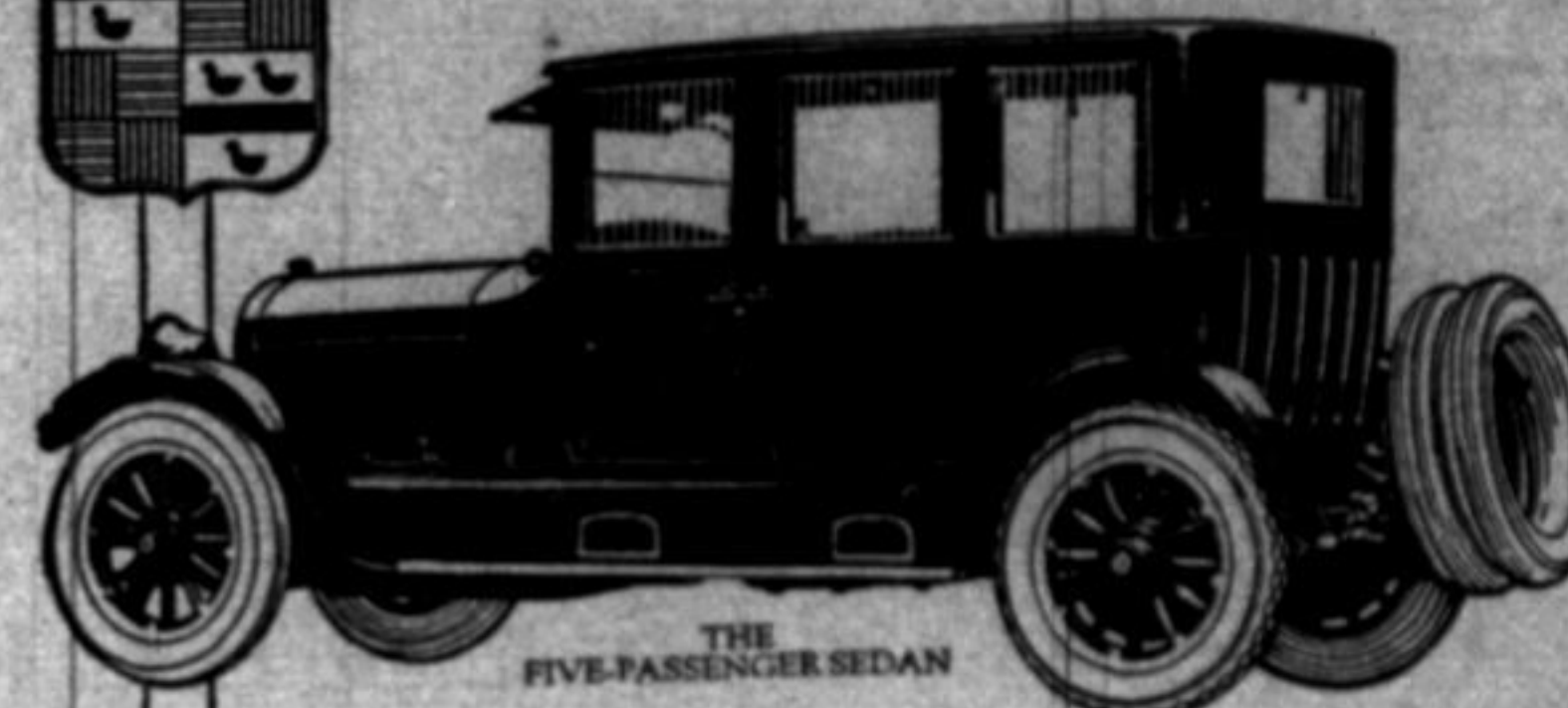
Thirty-three distinct breeds of live stock will be represented in the 843 regular classes of the Exposition and over \$100,000 will be distributed among the prize winners, besides the numerous ribbons, cups and other trophies offered as awards. An exhibition of domestic animals, such as never has been assembled before, will greet the visitor to the International Live Stock Exposition at Chicago, December 2nd to 9th.

ZION LUTHERAN

Rev. W. F. Suhr, Pastor
Sunday school in English at 9:45
Morning services in English at 10:45
Do not forget the supper and sale on Thursday, Nov. 23, afternoon and evening, given by the Ladies Aid in the assembly room.

The vocalists that used to sing, "O Promise Me" with such deep feeling, had not perhaps had much experience with politicians' promises. The old Thanksgiving day family reunion began to decline about the time that dear old Mother became unable to cook dinner for a score of people.

STANDARD OF THE WORLD



CADILLAC

A trifle more compact than the seven-passenger Suburban, the Sedan has a distinctive smartness of line that marks it unquestionably as one of the most beautiful models Cadillac has produced.

It is commodious yet companionable; and while large enough for family and friends, has the easy driving qualities of the Coupe.

The distinction and elegance of the five-passenger Sedan appeal irresistibly to those to whom good taste and dignity, as opposed to mere novelty, are always important considerations.

CADILLAC MOTOR CAR COMPANY - Chicago Branch
Division of General Motors Corporation
EVANSTON SALES AND SERVICE - 1820 RIDGE AVENUE

"On Time"

Speed! Swiftly along the lake's rim glide the heavy North Shore Trains—straight to the heart of Chicago—on time to the minute. You can bank on a prompt arrival. And throughout your trip the clean, roomy seats invite satisfying relaxation. Vigilant trainmen and modern mechanical safeguards insure your safety. Get acquainted with this handy route.

North Shore Line

Fast Limited Trains for Chicago leave Highland Park every hour from 6:29 a. m. to 1:29 a. m.

CHICAGO CIVIC OPERA SPECIAL

Every Thursday during the season to Grand Opera at the Auditorium, Chicago Congress Street and Wabash Avenue.

Leaves Highland Park - - - - - 6:46 p. m.
Arrives Congress & Wabash - - - - - 7:50 p. m.

Special table d'hote dinner on the Dining Car \$1.25.
Also service a la carte

Immediately after the Opera the special train will leave Congress and Wabash Elevated Station for Highland Park. An excellent supper served a la carte.

Chicago North Shore and Milwaukee R. R.

Highland Park Ticket Office  5 N. St. Johns Ave.