

ROCHESTER SPECIAL HAS NEW EQUIPMENT

The Rochester-Minnesota Special operating daily via the Chicago & Northwestern Ry. between Chicago and Rochester, Minn., has just been newly equipped from locomotive pilot to observation car with electric lighted "Northwestern" trade mark, with the latest type of all-steel coaches, standard Pullman sleeping cars and observation buffet-lounging cars.

from the Madison St. Terminal Sunday, September 24th, 1922.

In addition to the increase in the general line of travel between Chicago and points in Minnesota, in the course of a year many thousands of physicians and their patients make the trip to Rochester, Minn., and it is with the view of catering to the wants of this class of travel that the railway company has taken this forward step in providing the new train.

When politicians sweep the state, the public frequently gets hit with the broomhandle.

The schools may have to close in some places on account of coal shortage, but it is not reported that any bridge clubs will have to be given up.

The Greek throne is said to be shaking, and evidently it needs to have the village handy man come in and glue up its hind legs again.

One of the triumphs of modern science in America is going to be accomplished soon, when the number of automobile owners will exceed the number of people who are able to walk.

MODELS OF FAMED SHIPS ARE SHOWN

AT GREAT LAKES STATION

Replicas of Sixteen Fighters of United States Navy on Display; Old and New

From the Bon Homme Richard of John Paul Jones down to the latest battle cruiser, models of American fighting ships of all periods of United States history are shown in a naval display at the Great Lakes station. The models were furnished Captain Waldo Evans, commandant of the district, by the naval bureau of construction and repair.

The models cover the development of the American navy from the revolution to the present, with replicas of some of the most famous craft that ever have flown the American flag.

The frigate Bon Homme Richard, outfitted in France by Jones, won undying fame, Sept. 28, 1779, when she attacked the Serapis, a British frigate of 44 guns, which, with the Countess of Scarborough, was conveying 40 British merchantmen home from the Baltic. In a desperate battle in which the Bon Homme Richard was so badly riddled, she sank a few hours later, Jones lashed his ship to the Serapis and fought until the British captain struck his flag. The battle ended with the Bon Homme Richard on fire in two places, all her lower deck guns dismantled, two of her bigger guns blown up, and seven feet of water in her hold.

Next in interest to the model of the Richard, is a replica of the equally famous frigate Constitution, immortalized in Oliver Wendall Holmes' poem, "Old Ironsides."

Others represented in the collection are the Monitor and her famous rival, the Confederate ironclad, Merrimac; the ironclad Benton; the steam sloop Enterprise, one of the first steam vessels in the navy; the cruiser Chicago; the battleship Oregon, which made the trip around South America to reach Santiago in time to participate in the destruction of the Spanish fleet; the cruiser Brooklyn, and the torpedo boat Winslow.

Modern naval craft represented include the NC-4, first heavier than air ship to fly across the Atlantic; the battle cruiser Lexington; scout cruiser Omaha; dreadnaught North Carolina; submarine O-3; and the destroyer Manley.

Three quarters of a million

DODGE BROTHERS MOTOR CARS

A. G. McPherson

HIGHLAND PARK, ILLINOIS
Phones: Highland Park 120 - 121

The Local Telephone Directory

Goes to Press Soon

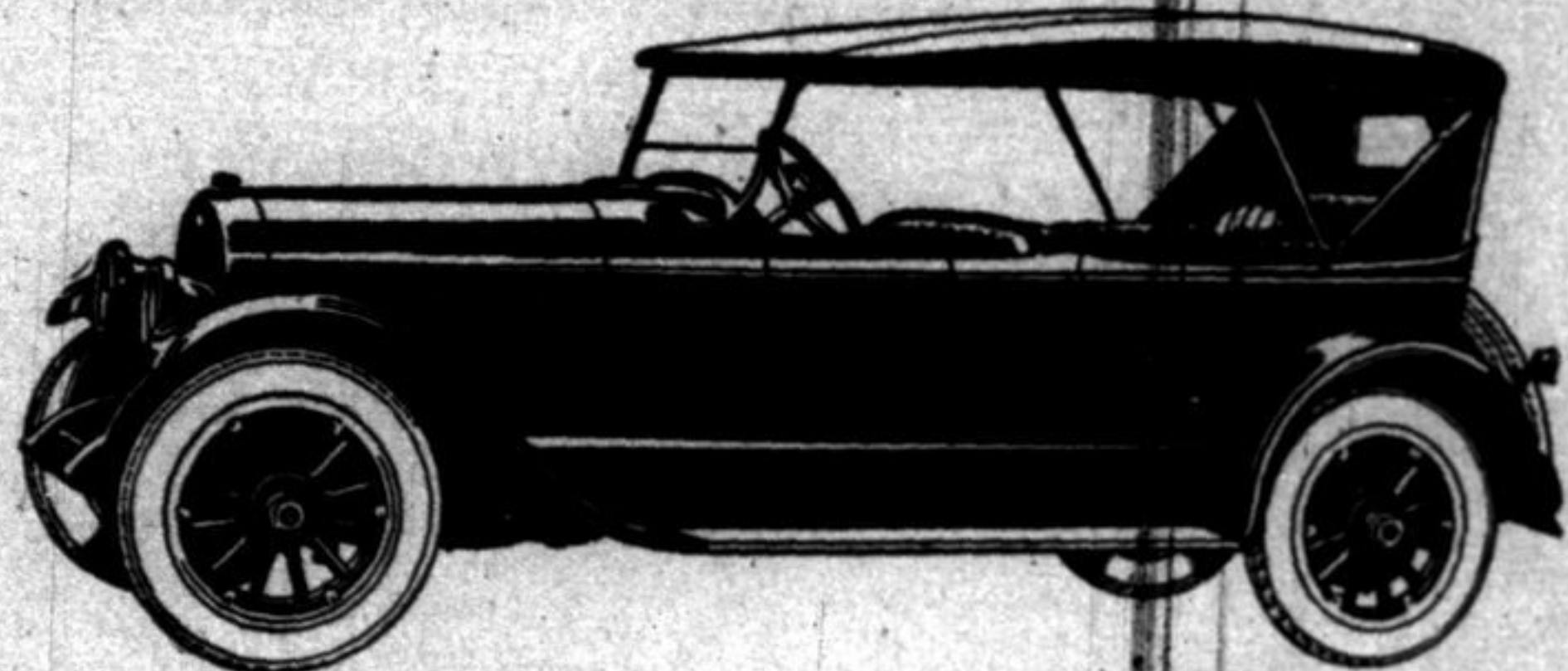
In the interest of good service subscribers are requested to call



The Telephone Company

and give notice of any changes or corrections that should be made in their listings

ILLINOIS BELL TELEPHONE COMPANY



LINCOLN
Get Behind the Wheel

A ride in a Lincoln is one continuous trip of comfort and enjoyment. Changes in road conditions bring scarcely any perceptible difference in the smoothness with which your car travels.

Rear springs shackled at both ends; final drive through a torque tube; combined with superior control of the motor power itself, afford a master sense of security in any driving emergency.

The Phaeton
\$3800
F.O.B. DETROIT
Ten Body Types

SPRINGER & PERSON

Ford and Lincoln Dealers Phone H. P. 164 Highland Park

HIGHLAND PARK TAILORS

364 Central Avenue DeRensis Telephone 463



FALL OPENING

EXTRAORDINARY values in Lady's Suits and Coats can be had at the Highland Park Tailors, where the smartest styles, finest cloths and best workmanship are combined.

NEW TRANSMISSION LINE IS BUILDING

Public Service Company Installing New Light and Power Facilities

The constant growth of business in the north zone of the Public Service Company has necessitated the construction of an additional transmission line which is now being installed along the right of way of the Chicago & Northwestern Railway, Niles Center branch, from Church street, west of Evanston to Lake Bluff. The capacity of this line will be approximately 5,000 K. v. s. It will be possible by means of sectionalizing switches to parallel this line and transformer bank with a switch line and transformer bank between Evanston and Lake Bluff, permitting of flexible control and improved service. At Lake Bluff the line will be brought into a steel cut door switch tower which is now being installed. The new line will be in service within 60 days.

WINTHROP HARBOR GETS NEW SERVICE

Connected With Lines of the Public Service Company; Improvement

Winthrop Harbor, Ill., has during the past few years increased in population and new residences very materially. The lighting plant which was owned by the village consisted of a 15 horsepower engine, driving a direct current generator. Service was furnished over a distribution system subject to numerous interruptions during the evening period. For some time the village officials have been negotiating with the Public Service Company and the latter has recently made arrangements for the extension of its service into the community.

A three-phase 2300-4000 volt line has been extended from Zion City to Winthrop Harbor and a distribution system constructed in that village. Twenty-four hour service is now being furnished.

Telephone 715-R
SEN TAZIALI
653 W. Park Ave.
Cement Contractor
EXCAVATING, BLACK DIRT,
MANURE
TEAMING SERVICE
I do an honest day's work at very reasonable prices.

Pouloplos Brothers

515 Central Ave. Tel. H. P. 429

FANCY FRUITS, VEGETABLES AND GROCERIES

Friday and Saturday Sale

10 lbs. Sugar 75c with \$1 Order

Del Monte Peaches, regular 45c seller, 36c
Savoy Peas the can 25c
Extra Sifted Richelieu Peas 25c
Honolulu Pineapple, sliced 25c and 35c
Savoy Preserves 35c; Three for \$1.00

Vegetables

Potatoes 25c, 37c Egg Plants 15c, 20c
Green Wax Beans, qt. 15c Beets and Carrots 5c
Spinach, pk. 40c 6 bunches 20c
Cauliflower 25c, 30c, 35c Cabbage, 3 lbs. 10c
Iceberg Headlettuce 10c, 15c, 18c Georgia Sweet Potatoes 10c
Cucumbers 8c, 10c 3 lbs. 25c
Tomatoes 2 lbs. 15c 6 lbs. 25c
Kalamazoo Celery bunch 20c Onions, lb. 5c; 6 lbs. 25c

Fruit

India River Grapefruit 15c; Two for 25c
Oranges, best Sunkist 65c and 75c
Bananas, extra large, dozen 30c
Medium Bananas, dozen 25c
Lemons, Sunkist, dozen 30c
Honey Dew Casaba Melons 30c, 35c, 40c, 50c
Concord Grapes 35c
Red Grapes, lb. 18c; Two lbs. 35c
White Grapes, lb. 15c; Two lbs. 25c

FINEST COFFEE ON THE MARKET

Richelieu, Chase & Sanborn and Manor House lb. 43c
Savoy Coffee lb. 35c; Three lbs. \$1.00
Strictly Fresh Eggs, the dozen 40c

Everybody is fighting fiercely for his rights nowadays, but no one feels under any obligations to perform his duties. "Flow, gently, sweet Afton" sang the old timers, but the modern sportsman wants something flowing besides water.