

Ford
THE UNIVERSAL CAR

TOURING CAR



\$348

F. O. B.
Detroit

Never Before A Value Like This

Why should you buy any car but a Ford? Prices lowest, parts lowest, operating and upkeep expense lowest, yet a Ford car will take you any place any car will go. These are sensible, not extravagant times, and a Ford is the most sensible car for anyone to own. Terms if desired.

SPRINGER & PERSON
Authorized Dealers
Tel. Highland Park 164 Corner St. Johns and Park Aves.
HIGHLAND PARK, ILLINOIS

Have you taken advantage of the opportunity offered by us to buy a

Sunbeam Electric Iron

for **\$7.50**

\$1 down and \$1 a month
and obtain with it absolutely

FREE

a Rid-Jid Ironing Board

(the retail price of which is \$5.00)

Many people have accepted the bargain chance. We have extended it considerably beyond the limit fixed originally, but the date of final withdrawal of the arrangement is approaching rapidly.

Demonstration at our Electric Shop

Public Service Company

OF NORTHERN ILLINOIS

FREDERICK A. WEIL, General Manager H. JENSEN, Superintendent

WEIL DETECTIVE AGENCY, Inc.

Established 1892 (City of Chicago License)
Expert Confidential Service—No Charge for Consultation
Suite 800 20 EAST JACKSON BOULEVARD—CHICAGO
Phone Wabash 5212—Night Phone Lalayette 2540

NOTICE OF AWARDED CONTRACT

Notice is hereby given to all persons interested that the bids for the furnishing of all labor, tools and materials necessary for paving Maria Street from the present pavement nine (9) feet south of the north corporate limits of the City of Highland Park, Illinois, to the north curb line extended of the present pavement in Bloom Street, were opened on the 26th day of May, A. D. 1922, and E. E. Farmer, being the lowest responsible bidder, the contract was awarded to said E. E. Farmer on the 2nd day of June, A. D. 1922.

Said bid for the work is as follows:

700 Cubic yards of grading for the roadway and curbing, including the preparation of the sub grade, and the removal of all surplus excavated materials, measured in the cut at

Sixty Cents (\$.60) per cubic yard. \$420.00

200 Cubic yards of grading for parkway, measured in the cut at Fifty Cents (\$.50) per cubic yard. \$100.00

1420 Square Yards of reinforced concrete pavement, measured from roadway face to roadway face of curbing, composed by volume of one (1) part Portland cement, two (2) parts sand and three (3) parts gravel or crushed stone, mixed with sufficient water; the thickness of the proposed pavement shall be seven (7) inches, with asphaltic felt expansion joints three-eighths (3/8) of an inch thick, and seven and one-half (7 1/2) inches wide, spaced thirty feet apart; said pavement shall be reinforced with forty (40) pounds of effective steel fabric, for each one hundred (100) square feet, with a painted, corrugated, eighteen gauge, wrought iron strip, six and one-half (6 1/2) inches wide; extended along the center line of pavement from end to end of proposed improvement with five-eighths (5/8) inch round steel bars spaced ten (10) feet center to center from end to end of said proposed improvement, each bar shall be five (5) feet in length, including protection from weather, curing with water and cleaning surface of pavement after completion, laid complete at

Two Dollars Fifty Cents (\$2.50) per square yard. \$350.00

1350 Lineal Feet of Portland cement concrete curbing built integral with the pavement, composed by volume of one (1) part cement, two (2) parts sand, and three (3) parts gravel or crushed stone, average thickness, including the mortar coat of the curb, six (6) inches, height, twelve (12) inches; the exposed surface of the curb shall be finished with a mortar coat one (1) inch thick, composed by volume of one part Portland cement and two (2) parts sand, mixed with sufficient water; open expansion joints, three-eighths (3/8) inches wide shall be constructed from the top to the bottom of the curb, spaced thirty (30) feet apart, laid complete at

Thirty Cents (\$.30) per lineal foot. \$414.00

2 catch basins constructed of brick masonry, brick laid with mortar composed by volume of one (1) part Portland cement and three (3) parts sand, mixed with sufficient water, inside diameter three and one-half (3 1/2) feet, side walls eight (8) inches thick, bottom six (6) inches thick, inside depth six and three-quarters (6 3/4) feet below the established grade where located, including all excavation, each furnished with an eight (8) inch inside diameter vitrified tile pipe trap and four hundred (400) pounds asphaltic coated cast iron inlet cover, constructed complete at Sixty Dollars (\$60.00) each. \$120.00

2 inlet basins constructed of brick masonry, brick laid with mortar composed by volume of one (1) part Portland cement and three (3) parts sand, mixed with sufficient water; side walls eight (8) inches thick, bottom six (6) inches thick, inside diameter three (3) feet, inside depth below finished grade seven and one-half (7 1/2) feet, with three-quarter (3/4) inch round ladder rounds of wrought iron, spaced sixteen (16) inches apart from top to bottom, including all excavation, furnished with asphaltic coated cast iron manhole cover weighing four hundred and eighty (480) pounds, constructed complete at Sixty-five (\$65.00) Dollars. \$65.00

1 new asphaltic coated, cast iron manhole cover weighing four hundred eighty (\$480) pounds set in place to finish grade on present catch basin at Bloom Street at Thirty (\$30.00) Dollars. \$30.00

2 present manholes, adjusted to finished grade where located at Five (\$5.00) Dollars each. \$10.00

650 Lineal feet of eight (8) inch inside diameter vitrified, salt glazed, hub and spigot, tile pipe drains laid at an average depth of five (5) feet six (6) inches, including all trenching; the drain pipe shall be covered with cinders to a depth of four (4) inches above the top of the pipe; the trench shall be backfilled with a four (4) inch core wall of cinders and the remainder with earth, laid complete at Eighty (\$80) Cents per foot. \$520.00

Adjusting walk approaches at Bloom Street by raising or lowering 10 Five (5) foot slabs at Three (\$3.00) Dollars per slab. \$30.00

30 square feet of new concrete walk at Thirty (\$3.00) Cents per square foot. \$90.00

Total amount of bid. \$5545.00

The owners of a majority of the

frontage of the lots and land upon said street, in the City of Highland Park, wherein said work is to be done, may, within ten days of the date hereof, elect to take said work and enter into a written contract to do said work at ten (10) per cent less than the price at which the same has been awarded.

SAMUEL M. WASTINGS
WARD W. WILLITS
FRANK L. CHENEY
ARTHUR G. BROWN
Council of the City of Highland Park, Illinois

Y. W. C. A. NOTES

Board Meeting

Mrs. W. A. Alexander will entertain the Y. W. C. A. board at her home, 304 N. Sheridan road, on Tuesday afternoon at 3 o'clock. The regular monthly board meeting will be held at this time, and plans for the summer's work will be completed.

Mrs. Walter Bridgman of Lake Forest, who attended the national Y. W. C. A. convention in Hot Springs the last week in April, will give a short report of her impressions of this most interesting convention.

Mothers' Club

The June meeting of the Mothers' club was postponed until Thursday, June 8, at 8 p. m. A most interesting program has been arranged. Mrs. Frank Pitt will give a talk.

The Junior Girls of the association will give a program the last hour consisting of piano and vocal solos, and dances which were used at the pageant.

This is the last meeting until September and many matters of interest will be brought up for discussion. A full attendance is greatly desired.

Cherry Picking

There will be a cherry picking camp at Sturgeon Bay, Wis., under the direction of the Central Field Y. W. C. A. from July 5 to August 5.

A month of out-doors, work and fun mixed, jolly companions while earning vacations picking cherries.

All girls between the ages of 15 and 21, whether members of the Y. W. C. A. or not, are eligible. Pickers are paid so much a quart and are given good, wholesome food and all the cherries they want to eat.

Any one interested can obtain further information by calling on the Secretary, Phone 675.

TASTE IN GARDENING

A lecturer on gardening the other day said that people have too many red, orange, and magenta colored flowers. He felt that these shades are not restful, that they suggest too much the ideas of activity and aggressiveness. He favored white, blue, and pink as the principal colors, claiming that they are more refreshing. The home, he argued, should be the place where tired people come to regain strength and calmness for life, and their flowers should fit into this mood.

Yet people who love brilliancy will dispute this claim, and say that the tones that this speaker decried give cheerfulness and sunshiny quality to a place.

There is one wonderful thing about flowers, that they seem to harmonize and fit into all moods. Colors that would clash terribly if made with artificial dyestuffs, will often go together well in a flower bed. The fields dotted with wild flowers contain a wide variety of colors, yet under the wonderful alchemy of sunshine all seem to flow together in a pleasing unity.

—B.

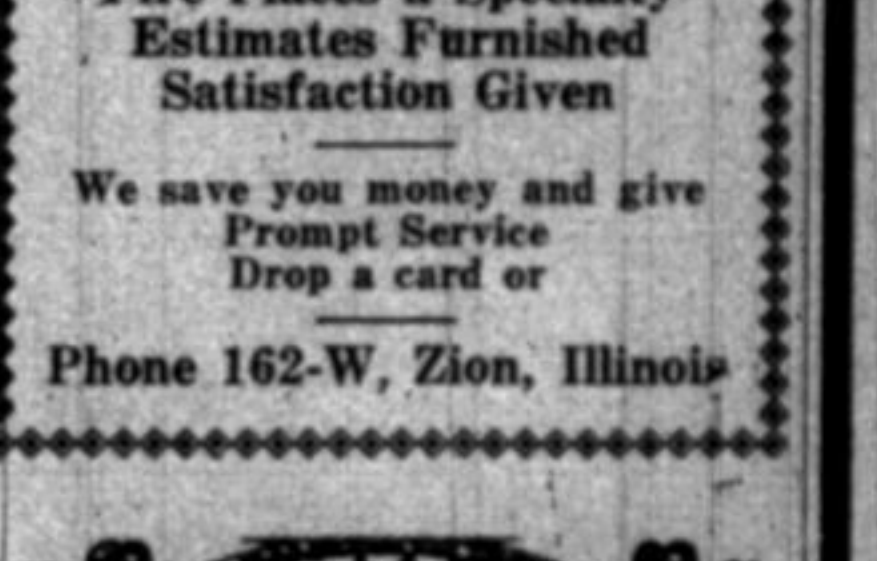
Alex. S. Burgess

General Contractor
Fire Places a Specialty
Estimates Furnished
Satisfaction Given

We save you money and give Prompt Service
Drop a card or

Phone 162-W, Zion, Illinois

SWEETHEARTS IN CANDYLAND



Soda with a sparkling vim
Good for her and good for him.

Our pure drinks served at our spotless fountains will agree with you and you'll agree with us that here is a rendezvous for folks who want to chat over a drink or two.

The Highland Sweet Shop
551 Central Ave.

WHY LET YOUR HOGS GET SICK OR DIE

We guarantee our remedy to save 95 per cent of the sick hogs, stop the coughing and destroy all germs in six days. If it doesn't do what we say, money refunded. Gets more worms than any worm capsules. Write for free information on diseases and cure of hogs and chickens.

MYERMAN STOCK & FOULTRY FARM, GAILLARD, ILL. R. 5

The Highland Park Hay and Grain Co.

will be opened in a few days with a complete line of feed. Also potatoes for sale.
28 NORTH FIRST ST.

The marvelous DUNN-PEN

The Fountain Pen
with the Little
Red Pump-Handle



Guaranteed
Your money refunded if you do not agree, after trial, that the Dunn-Pen is the most wonderful fountain pen in the world.
Come in today and get your Dunn-Pen.

Robt. W. Pease
Pharmacist
Phones H. P. 144-363

Nature's Greatest Food Certified Jersey Milk

THE MILK WE HAVE FOR SALE IS THE BEST, THEREFORE IT COMMANDS THE HIGHEST PRICE

Dr. Collum of Johns Hopkins University, Baltimore, Md., finds after many years of experimental work, that butterfat is the most valuable human food.

JERSEY MILK contains 5.37% butterfat, the highest percentage of any breed of cows.

JERSEY MILK is rich, creamy, appetizing and highly nutritious.

THE UNITED STATES GOVERNMENT SAYS:

"Milk is the best food we have. Give your children milk; a quart a day for every child if possible, a pint without fail. Plenty of milk will help you give all your children both big and little, a chance for health they ought to have. Buy more milk and less meat and your family will be better fed."

Our herd is regularly tested for tuberculosis by the U. S. Govt., Bureau of Animal Industry.

Ravine Farm

A. LAWRENCE MILLS, Owner
Phone 296, Highland Park, Illinois

Oak Terrace Laundry

Highwood, Illinois

Why wear yourself out over the wash tub during the warm summer days when you can have your laundry work done at these rates.

Wet Wash

20 pounds for - \$1.00

Rough Dry Wash

Per pound - .11c

this includes flat pieces ironed

We can take care of that Dry Cleaning also.

Prompt Service Our Motto