



# Santa Claus' Headquarters



**Daily's**  
Your  
**Christmas Store**  
Make Our Store  
**First on your Christmas List**

**A Few Christmas Suggestions:**

Silk and Wash Waist  
Sweaters

**SUITS**

Bath Robes

Skirts

Gloves, Mittens

Rain Coats

Silk and Muslin  
Underwear

Infants Wear

Skirts

Silk, Wool and Velvet  
**Dresses**

Hosiery

Silk Camisoles

**COATS**

Kimonas

Fancy Neckwear

Brassieres

Bloomers

A Small Deposit Will Hold Any Article till Xmas

**Daily's Ready-to-Wear**

Phone 1072

Highland Park, Illinois

## Shoes Make Useful Christmas Gifts

Do your Christmas shopping at Fell Bros. Shoe Shop, and you will receive more value for your money than anywhere else under the sun. You will also be fitted with the most up-to-the-minute styles in footwear of the highest quality, made for us by America's foremost shoe manufacturers.



We are the agents for the famous Queen Quality Shoes for ladies and Florsheim Shoes for men. For children we have the nicest assortment of high grade shoes including the Educator line. Our range of sizes is complete in every detail. Our prices cannot be duplicated anywhere else. Our merchandise guaranteed to please you. Come on everybody, look them over and make our store your headquarters for your Christmas shoe buying. Bed room slippers make ideal gifts. We have them in many different styles and shades. Neat and trim fitting spats in latest shades, also Eiffel brand hose in different grades, silk or beautiful wool mixtures.

TRADE AT HIGHLAND PARK'S LEADING SHOE SHOP

**Fell Bros.**

SMART SHOES FOR ALL

509 Central Avenue

Highland Park, Ill.

## Jewelry and Mens Furnishings Christmas Suggestions

Cuff Links

Vest Chains

Scarf Pins

Pearl Beads

Wrist Watches

Bar Pins

Beauty Pins

Ivory Sets

Cut Glass

Silverware

China

Gloves

Caps

Handkerchiefs

Cravets

Mufflers

Socks

Shirts

Garters

Belts

Suspenders

Underwear

**Here's the Button for Soft Cuffs**

Everybody will soon be wearing the soft cuff's own button.

Aside from its convenience the Kum-a-part is absolutely essential to correct dress. The old style chain and stiff post button was made for stiff cuffs. The Kum-a-part was created for soft cuffs.

Click-and-it's open

Snap-and-it's closed

**50c to \$2.00**

**KUMAPART CUFF BUTTON**

**R. W. Schneider**

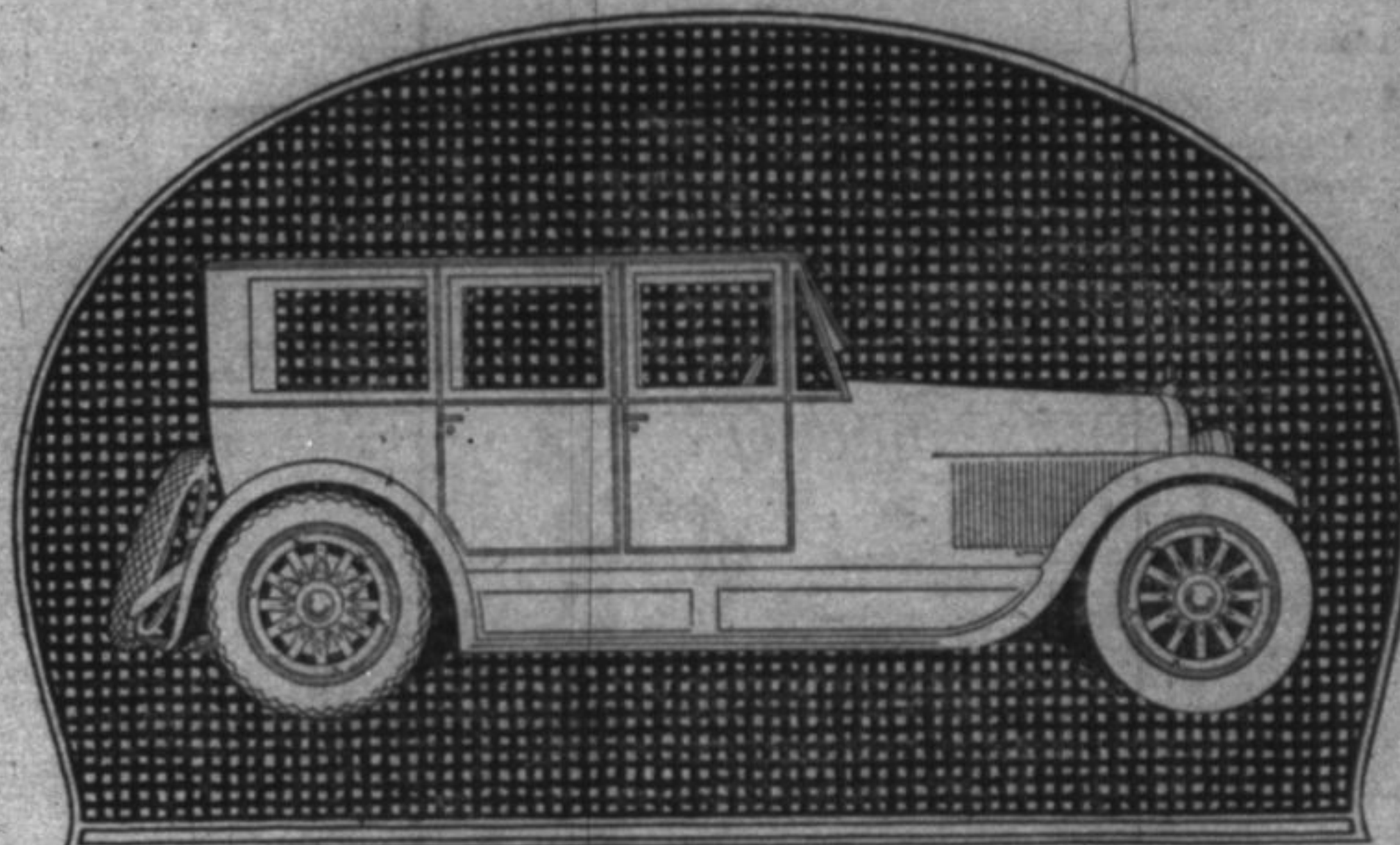
Jewelry and Men's Furnishings

393 Central Ave.

Tel. 331

## A Jordan for Christmas

A Christmas worth while.  
You had better Buy it Now than after a while.  
A Jordan will please you every mile.  
So lets have your Christmas Order with a Smile.



NEW JORDAN PRICES  
Silhouette, \$2095 Playboy, \$2095 Landulet, \$2995 Sedan, \$3200 Brougham, \$3200  
F. O. S. Factory

**KOON'S AUTO SALES**

Telephone 612

136 North First Street

Highland Park, Illinois

GRACE M. E.

At a meeting of League cabinet last night, a program of intense activity was young people are alert a season of real ser-tiulars later.

Be sure to attend service next Sunday evening theme will be the Flame." And continue to grow. you will come often.

That you may know our regular services for future reference: Mid-Week service 7:30 p. m.

Choir meeting Friday Sunday School at Sunday Morning 9 a. m.

Epworth League, 6 Sunday evening 7:30 p. m.

It is desired that time, as often as possible there be a sympathetic on in each event.

Y. W. C. A.

Mothers' A most excellent ferred Tuesday evening er's Club.

The Juniors pro-musical numbers. F-line Evans playing a-duct. Eric Engberg violin solo accompa-ter Norma.

The third number-ing musical part of a solo by Sylvia T with much talent. I-ure to have the son-of the Mother's C-ertain at these mo-

The last half of- given by Mrs. Cla-us lately returned the Orient, and she a most interesting a-perience from shore.

The habits, traits-of the peoples in the-tries as they appear-Smith brought man-iful hand work wh-as she displayed-quisite laces, shaw-coat were much ad-ed in her talk we-idents which she-ability to see the-situations.

The evening was-to be remembered-what out of the-Mother's club app-message of the pe-side of the land.

NOTICE OF LETT-ASSESSMEN-Council of the City

NOTICE IS HER-bids will be receive-tion of a four (4)-ter main, together-valves, valve boxes-ings to be constr-along and under G-Gray Avenue, all i-land Park, County-of Illinois, as a w-with the ordinan-

Said bids will b-Council at its offic-Highland Park, I-'clock P. M. on-ay of December-time and place th-opened and read.

The specification-posals will be fur-of the City Clerk-of said City.

The contractor-bonds, which bon-est at the rate of-per annum.

All proposals o-companied by a c-able to the Presi-

De

SUNDAY, DEC. 1

Admission: Adult-Children under 1-

Marie

"MOONLIG-

A peppery pictu-realism directe-

Selznick News.

Movie Stars Snap-

MONDAY, DEC.

Admission: Adult-

Children-under 1-

Maurice Tourne-

cast in

"THE FOOL-

From the novel b-

irected by Ma-

Clarence L. Br-

Pathe Review

TUESDAY, DEC.

Admission: Add-

Children-under 1-

Frank Sheridan,

Richard Travis

"THE RIDER O-

A drama of the

Joan

Pathe-Comedy