



*It's Money  
in your pocket  
if you buy your  
Clothes  
from us now!*

Take our tip and come buy your Summer Clothes this very day.

The LOW PRICES we are making are fast cleaning us out of the good things.

We want to sell out every piece of Summer goods in our store, and we are making the PRICES that will soon do it.

Better hurry.  
Don't sweat.

Wear our good "Nifty" Clothes

**S. FELL**

13 S. St. Johns Ave. Tel. 307 Highland Park, Ill.

Walter Anita-Alvarez **KNUPFER** Superior Pianoforte Instruction

For the accommodation of pupils of the North Shore suburbs, Mr. and Mrs. Knupfer will accept a limited number of piano students for instruction at their residence studio—

**722 Clinton Place, Evanston**

Students may combine their individual instruction with the graduation courses offered at the

**Knupfer Studios**

School of Music and Dramatic Arts, Fine Arts Building, Chicago, and are entitled to all the privileges of this institution.

Course of instruction covers all phases of pianistic development from the first rudiments to the highest degree of artistic proficiency. Reservations for the fall term should be made now. FOR PARTICULARS TELEPHONE EVANSTON 6504.

**Clean Carpets**

Method approved by leading weavers



ALSO ENDORSED BY MANY PROMINENT LADIES OF HIGHLAND PARK

**A. S. LOOMIS**  
Carpet and Rug Washing

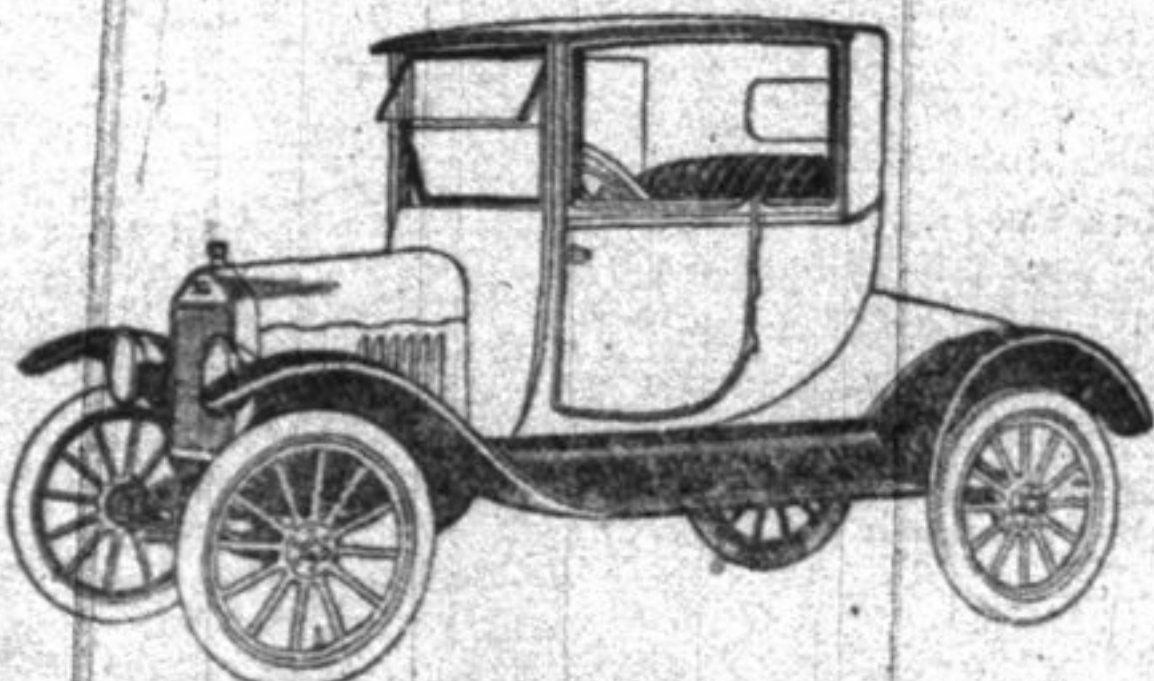
Highland Park, Illinois  
Phone Highland Park 936

**Ford**  
THE UNIVERSAL CAR

The Ford Coupe is the answer to a demand for an enclosed Ford which is always ready for all kinds of weather — summer and winter; a Ford with more luxury in upholstery and other appointments than is found in the runabout. The Coupelet has the regular Ford chassis with a de luxe body; permanent top, sliding plate glass windows, large doors. A handsome car in every way — and Ford economy in price and operation.

Touring Car, \$575; Runabout \$550; Coupe, \$750; Sedan, \$875; Ton Truck Chassis, \$600. Prices F.O.B. Detroit. Electric Starting Equipment \$75.00 extra.

INSIST ON GENUINE FORD PARTS



**A. G. McPHERSON**  
Telephones Highland Park 120-121  
HIGHLAND PARK, ILL.

**M. E. CHURCH**

**The Week's Program**

A ministers' conference under the direction of Bishop Thomas Nicholson on the Area program for today and tomorrow will be held at the Des Plaines camp ground Monday, Tuesday and Wednesday at 1:30 p. m. The minister will attend these conferences and will also speak at the Business Men's noon-day services in the lobby of the Central Y. M. C. A., 19 S. LaSalle st., at 1 p. m. Monday, and Thursday. He will also speak at the vesper service on Thursday evening, at 6:30. We expect to see some of our men present at the latter service.

Wednesday Bible Study and Prayer Service at 8 p. m.

This week we study the 63rd chapter of Isa. Please read this chapter carefully and study it prayerfully. Come prepared to comment and ask questions. The attendance last week was very good with 18 present.

Thursday at Diamond Lake

The annual S. S. picnic will be held at Diamond Lake Thursday next. The special car will leave the Highwood station at 9:30 promptly, day-light saving time (fast). The expenses of all S. S. children, teachers and officers will be paid. The expenses of all others for the round trip will be \$1. We desire a number of visitors.

Sunday Services

Some of our people are attending Des Plaines camp meetings, Sunday. There will be no morning worship at the church. The S. S. will meet, as usual at 9:30 a. m. The service in the open air will be held at 7 p. m. The service at the church at eight will follow.

July 28th at 8 p. m.

At the minister's request either Dr. V. W. Thrall or Dr. Neal will be at the Wednesday evening service. The subject will be Christian Stewardship. We must have every member of the church present. The public who are interested in hearing a strong speaker on a great subject, are cordially invited. Members Reserve the Date! Mark Your Calendar! Do it Now!

Formerly the farm hand had to know how to milk the cows, but if he works for the city folks he must know first of all how to repair the touring car.

As the corn crops seem likely to be much reduced by the unfavorable weather, it remains to be seen which political party can lay it off on the other.

The fact that all parties have declared for a reduction in the cost of living, convinces some people that nothing will be done to get it down.

**NOTICE OF AWARDDING CONTRACT**

Notice is hereby given to all persons interested, that the bids for the furnishing or all labor, tools and materials necessary for the improvement of the present roadways and street returns as far back as the street lines extended, of Roger Williams Avenue, from the Easterly line of St. Johns Avenue, extended, to a point One Hundred Fifty (150) feet east of the Northwest corner of Lot One Hundred Twenty-seven (127) South Highlands Park and Dean Avenue from the Northernly line extended of Roger Williams Avenue, to the Southernly line extended of Sheridan Road, except that portion of said streets occupied by the present bridges and paved roadway designated as Sheridan Road, at its intersection with Roger Williams Avenue, by constructing thereon an asphaltic concrete pavement two inches (2") in depth, laid on the existing cement concrete pavement with a top dressing of roofing gravel three-eighths (3/8) inch in depth, rolled into the top surface without increasing the depth beyond two inches (2"), cleaning the present pavement of all loose material and other matter not incorporated in the pavement, and otherwise improving said streets, were opened on the 12th day of July, A. D. 1920, and the Western Improvement Company being the lowest responsible bidder the contract was awarded to said Western Improvement Company on the 14th day of July, A. D. 1920.

Said bid for the work is as follows:

Approximate Quantities	Items	Amount
14,799 sq. yds.	of asphaltic concrete pavement two (2) inches in depth, laid on the existing cement concrete pavement	ment, with a top dressing of roofing gravel three-eighths (3/8) inch in depth, rolled into the top surface without increasing depth beyond two (2) inches, including cleaning and otherwise improving the roadways of said streets, complete T wo (2) Dollars per square yard.
		\$29,598.00

The owners of a majority of the frontage of the lots and land upon said Roger Williams Avenue and Dean Avenue, in the City of Highland Park, wherein said work is to be done, may, within ten days of the date hereof, elect to take said work and enter into a written contract to do said work at ten per centum less than the price at which the same has been awarded.

SAMUEL M. HASTINGS,  
FRANK L. CHENEY,  
E. G. HUBER,  
ARTHUR G. BROWN,  
Council of the City of Highland Park, Illinois.

Here's Why We Call It  
**The Road of Service**

Note the Convenient Schedule

	Trains leave Highland Park	Arrive Chicago
For the Business Man	6:38 a. m.	7:44 a. m.
	7:08 a. m.	8:14 a. m.
	7:38 a. m.	8:44 a. m.
	8:08 a. m.	9:14 a. m.
Every half-hour thereafter until		
For the Matinee and Shopper	11:08 a. m.	12:14 p. m.
	11:38 a. m.	12:44 p. m.
	12:08 p. m.	1:14 p. m.
	12:38 p. m.	1:44 p. m.
	1:08 p. m.	2:14 p. m.
Then every thirty minutes until		
For the Theatre and Dinner Party	6:08 p. m.	7:14 p. m.
	6:38 p. m.	7:44 p. m.
	7:08 p. m.	8:14 p. m.
	7:38 p. m.	8:44 p. m.
	4:38 p. m.	5:44 p. m.
	5:08 p. m.	6:14 p. m.
	5:38 p. m.	6:44 p. m.
	and 6:38 p. m.	

Then every half hour until 12:38 a. m.  
Last train at 1:38 a. m.

Excellent dining car service is provided on trains leaving Highland Park at 9:38 a. m., 1:38 p. m., Above Schedules based on Standard Time

For further information apply to the  
**CHICAGO NORTH SHORE & MILWAUKEE R. R.**  
Highland Park Ticket Office  
Phone Highland Park 1361



**ANNUAL REPORT OF TOWNSHIP TREASURER**

Statement of the Finances of Township No. 43, Range No. 12, in Lake County, Illinois, from July 1, 1919, to June 30, 1920.

PERMANENT FUND	
<b>Receipts</b>	
Real estate notes on hand July 1, 1919	\$ 2,500.00
Bonds on hand July 1, 1919	100.00
Total	\$ 2,600.00
<b>Expenditures</b>	
Real estate notes on hand June 30, 1920	2,500.00
Bonds on hand June 30, 1920	100.00
Total	\$ 2,600.00
<b>Distributive Fund</b>	
<b>Receipts</b>	
Balance July 1, 1919	71.39
Income of township fund	153.50
From county superintendents	4,156.68
Appropriated but withheld from districts	227.45
From other sources	73.29
Total	\$ 4,682.31
<b>Disbursements</b>	
Incidental expenses of trustees	56.41
Compensation of treasurer	750.00
Distributed to districts	3,572.73
Released to districts	227.45
Balance June 30, 1920	75.72
Total	\$ 4,682.31
<b>DISTRICT FUND</b>	
<b>Receipts</b>	
Balance July 1, 1919	\$ 62,051.86
Distribution of trustees	3,794.42
From district taxes	271,140.13
Tuition paid by pupils	4,080.00
Sale of school property	462.95
Reimbursements for vocational education	897.26
Other sources	1,872.35
Total	\$344,298.97
<b>Disbursements</b>	
School board and business office	5,872.21
Compulsory attendance	240.00
Salary of Superintendent	11,785.00
Salary of teachers	122,028.85
Teachers' pension fund	438.00
Textbooks and stationery	10,131.59
Interest on teachers' orders	690.21
Salary of janitor	20,099.89
Fuel, light, power, water and supplies	20,200.73
Repairs and replacements	9,630.95
Insurance	2,275.15
Libraries	1,630.07
Promotion of health	3,661.57
Transportation of pupils	5,437.48
Night schools	1,306.65
Grounds, buildings and alterations	54,687.63
New equipment	5,357.33
Principal on bonds	21,500.00
Interest on bonds	11,450.00
Other expenditures	480.16
Balance on hand June 30, 1920	35,395.40
Total	\$344,298.97

I do hereby certify that the foregoing statement is true and correct according to the best of my knowledge and belief.

MRS. WM. DOOLEY,  
Treasurer.  
Subscribed and sworn to before me this 12th day of July A. D. 1920.  
W. C. Flinn,  
Notary Public.

The Family Washing Done at Low Cost in Money and Labor

THE difference between a few cents and several dollars is the difference between the wages paid the Electric Washing Machine and the available laundress.

There's another very marked difference — the work is done better and more quickly by the machine. A few hours is usually sufficient for this weekly job even in small families.

There are washing machines in use in very many houses connected to our lines. DON'T YOU WANT ONE IN YOUR HOUSE?

**FEDERAL Electric Washing Machines**

Sold on Monthly Payments

\$5 paid down puts a Federal in your house

Demonstrations at our Sales Rooms

**Public Service Co.**  
of Northern Illinois

SCOTT JORDAN, Pres. and Treas. ESTABLISHED 1854 WILMOT WHITAKER, Assistant Sec'y.  
CADY M. JORDAN, Vice-Pres. and Sec'y.  
**G. H. JORDAN & CO., Funeral Directors**  
Chapel at each Establishment  
Complete Line of Funeral Furnishings  
612 Dearb Street, Evanston Phone Evanston 449  
164 N. MICHIGAN BLVD., CHICAGO 1522 E. 53rd STREET, HYDE PARK  
Phone Randolph 1346-1347