



Of course you want a new suit and some new furnishing goods so that you can dress up and "celebrate."

Dress yourself at our store where you can find the stylish stuff.

When we once rig you out from your new lid down to your new socks, inside and out, you will be our customer for keeps.

We keep up the quality; we keep down the price.

Wear our good "Nifty" Clothes

S. FELL

13 S. St. Johns Ave.

Tel. 307

Highland Park, Ill.



DAN DENUNZIO
Maker of
SNAPPY CLOTHES

We also do all kinds of
CLEANING, PRESSING and
REPAIRING ON SHORT NOTICE

DAN DeNUNZIO
394 Central Avenue Highland Park, Illinois
Telephone 1336

Walter Anfa-Alvarez **KNUPFER** Superior Pianoforte Instruction

For the accommodation of pupils of the North Shore suburbs, Mr. and Mrs. Knupfer will accept a limited number of piano students for instruction at their residence studio—

722 Clinton Place, Evanston

Students may combine their individual instruction with the graduation courses offered at the

Knupfer Studios

School of Music and Dramatic Arts, Fine Arts Building, Chicago, and are entitled to all the privileges of this institution.

Course of instruction covers all phases of pianistic development from the first rudiments to the highest degree of artistic proficiency. Reservations for the fall term should be made now. FOR PARTICULARS TELEPHONE EVANSTON 6504.

Bracelets

Bracelets are steadily becoming more popular and are now the most acceptable gift in jewelry. They are made flexible with all diamonds, sapphires or emeralds, or alternative diamonds, sapphires and emeralds.

They are also made in green gold, platinum top, engine turned or engraved with a few stones spaced an inch apart.

Priced at \$25.00 and upwards.

Charles E. Graves & Co.
Jewelers and Silversmiths
Madison and Wabash Avenues
CHICAGO

WANTS 2.7 CENTS PER MILE

Increased Cost of Operating Due to Higher Wages Given As the Main Reason

The North Shore line has filed with the public utilities commission a petition asking permission to increase the rate of fare to be charged. The date for the hearing has not yet been set so far as known.

Following is a communication received from the publicity department of the railroad, setting forth the reasons why the company feels it should be given a higher rate of fare:

Authority to raise its passenger rates to 2.7 cents a mile in both Illinois and Wisconsin is asked by the Chicago, North Shore & Milwaukee railroad, in a petition filed with the interstate commerce commission.

The present rate of fare on the electric line is 2.5 cents a mile in interstate traffic and in Wisconsin and 2 cents a mile in Illinois. The petition asks that the new rate be made uniform over the entire line from Chicago to Milwaukee.

Officials of the company state that the great increase in operating expenses, due largely to increased wages and higher cost of materials makes the higher fare essential if the road is to continue to give the public good service.

During the summer of 1919 a wage increase amounting to approximately \$350,000 a year was granted the employees of the line. Demands for a further increase have been made by the trainmen and while the negotiations are still under way, it is expected that an increase equalling, or exceeding the one last year, will be granted.

If the increase in fares is authorized by the interstate commerce commission, the rate on the electric line will still be considerably lower than charged by the steam roads, where a flat rate of 3 cents a mile has been in force for nearly three years.

ARREST CONDUCTOR ON GRAFT CHARGE

Old Employee of the Chicago & Northwestern Charged With Reselling Tickets

Patrick Callahan, a veteran conductor on the Northwestern, well known on the North Shore by hundreds of people who have ridden on his train to Chicago, is under arrest at Milwaukee on charges of graft. The scandal that has been precipitated is not unlike that which occurred a year or two ago on the electric railroad when it was revealed that grafting employees had made away with thousands of dollars worth of tickets.

Here is what a Milwaukee dispatch says of Callahan's arrest:

Milwaukee, June 21.—Patrick Callahan, one of the oldest conductors on the Chicago and Northwestern railroad, and three other Milwaukeeans, Harry Schlewitz, Harry Drosky and Benjamin Tannebaum, business men, were arrested today by deputy U. S. marshals on the charge of conspiracy to defraud the government through theft and sale of tickets.

According to H. H. Stroud, head of the Milwaukee office of the bureau of investigation of the department of justice, the alleged stealing and selling of tickets has been going on since March 1, at least and hundreds of dollars' worth are involved.

Callahan, who is 60 years of age, and has been in the road's employ since 1892, has the run between Milwaukee and Chicago, and makes a round trip each day. He is alleged to have kept the tickets turned over to him by passengers and to have sold them to the other defendants who resold them.

COUNTY TREASURER BEGINS TAX SALE

The sale of property for failure to pay delinquent taxes was begun Monday by Roy W. Bracher, county treasurer, who on the first Monday in June obtained judgment in the county court and permission to start the sales.

Only one description was sold Monday. Another was sold Tuesday. During this week only one description will be sold, as there are hundreds who have been paying up their delinquent taxes during the last few days, and if the descriptions are held for a week, a large percentage of the taxes will be paid.

This week has been a very busy one in the office of the county treasurer and the entire force was rushed throughout the week. If this rush continues the number of descriptions which finally go on sale will be very small as compared to last year. Many of the descriptions were those whose owners held out until they had a ruling from the county judge on the legality of the 20 per cent horizontal raise.

NEW COMMANDER FOR GREAT LAKES NAMED

Captain D. W. Wurstbaugh Succeeds Admiral Bassett Here About July First

Capt. D. W. Wurstbaugh, United States navy, has been appointed commandant of the Great Lakes Training Station, and will assume charge there, on orders already issued, on July 1.

Capt. Wurstbaugh succeeds Admiral Bassett, who it was announced some weeks ago, would retire from the command about July 1.

The appointment of Capt. Wurstbaugh, it is understood here, has been in line with the policy of Secretary of the Navy Daniels to advance those who had been in the actual war and danger zone, as against those who, although serving at home in honorable and important capacities, were not combatants.

Capt. Wurstbaugh at the opening of the war was chief aid of Secretary Daniels of the Navy Department. He was attached to the office also of Admiral Benson, chief of the operations division. When the United States went into the fight Capt. Wurstbaugh got active service abroad and on his return here he was assigned to the Naval War College, whence he has been ordered to Chicago.

Wurstbaugh received his rank of captain under the act of May 22, 1917 soon after the United States entered the war. He is regarded as a brilliant officer.

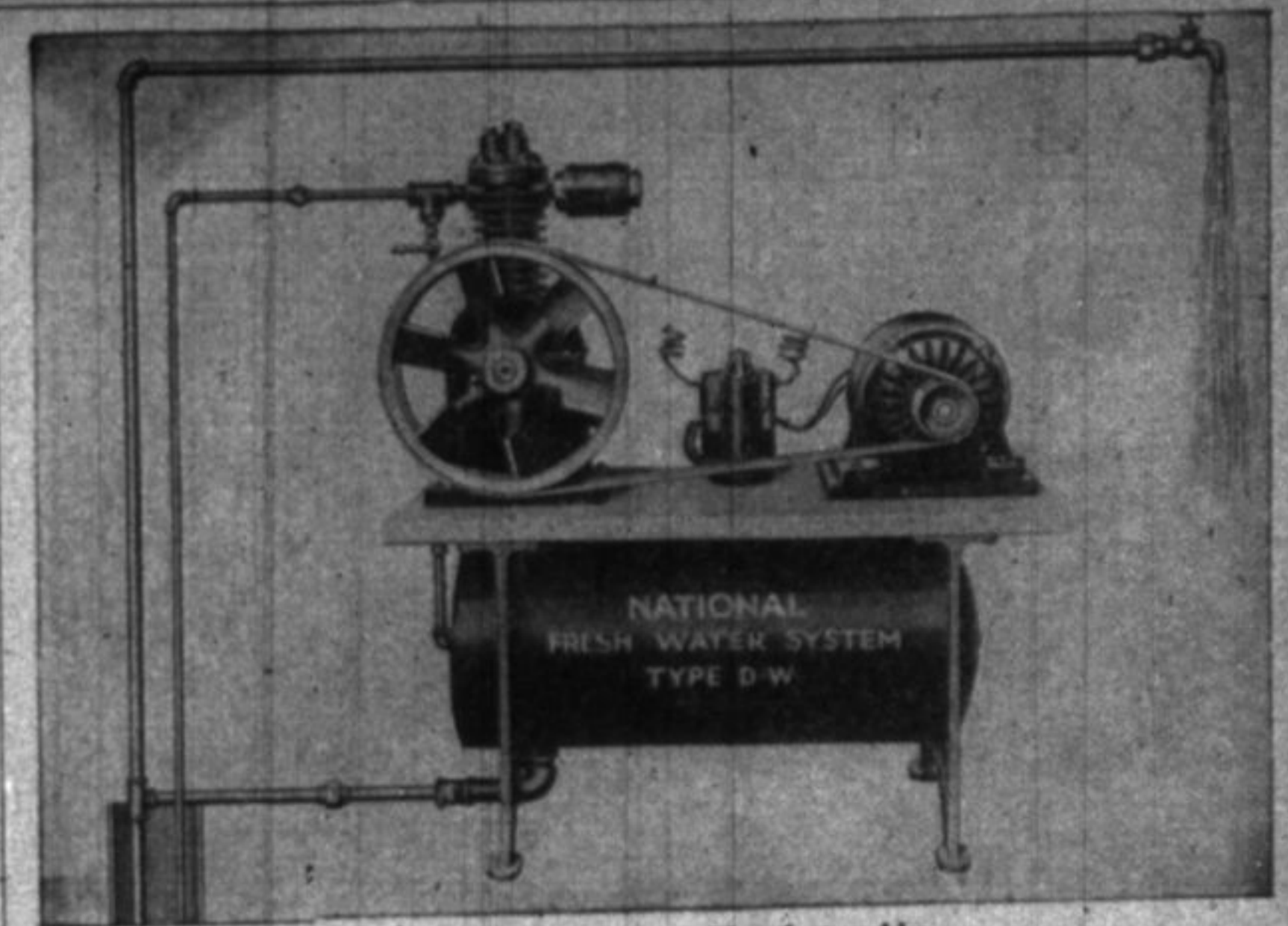
It is absolutely useless to try to find a dish washer, but you might possibly succeed in getting a china cleaner.

And you never again can find a girl for general house work, but quite likely you can get a household superintendent.

While the automobile novices create the most alarm on the road, it is the experienced drivers that figure in the most accidents.

It is hoped that the Socialist party will not insist that all its candidates shall have done everything possible to hinder the country when it was fighting for its life with the German power.

Some fussy railroads will not permit passengers to smoke in their sleeping car berths. Perhaps before long they will be forbidding them to polish their boots with the sheets.



Manufactured by NATIONAL UTILITIES CORPORATION, MILWAUKEE, WIS.

Fresh Running Water at Small Cost

You can have this special D-W Unit for half the cost of a cheap automobile. Specially designed for either deep or shallow wells when electric power is available. No pump house needed. Easily installed, only three connections necessary. The

NATIONAL Fresh From The Well Water System

brings water right from the depths of the well or spring—clear, fresh and of even temperature. It gives your home healthy, cool and invigorating drinking water in addition to the great convenience of bathroom, toilet, laundry and kitchen sink. By using an extra pump both hard and soft water can be supplied from any of our Systems, thus affording complete fresh running water service.

A full line of National Systems for large and small farms or suburban homes.

CHARLES B. FITZGERALD
County Agent
Phone 435-J LAKE FOREST, ILLINOIS

Philadelphia Lawn Mower Grinding Company
GRINDING AND REPAIRING LAWN MOWERS

Motor Mowers and Horse Mowers a specialty. All work guaranteed equal to new. New bottom blades for all makes of mowers.

WEST ELM PLACE, HIGHLAND PARK
Next to Gourley's Lumber Yard

Clean Cool Comfortable
Traveling to Chicago
on the Electric Road

	Trains leave Highland Park	Arrive Chicago
For the Business Man	6:38 a. m.	7:44 a. m.
	7:08 a. m.	8:14 a. m.
	7:38 a. m.	8:44 a. m.
	8:08 a. m.	9:14 a. m.
Every half-hour thereafter until		
For the Matinee and Shopper	11:08 a. m.	12:14 p. m.
	11:38 a. m.	12:44 p. m.
	12:08 p. m.	1:14 p. m.
	12:38 p. m.	1:44 p. m.
Then every thirty minutes until		
For the Theatre and Dinner Party	1:08 p. m.	2:14 p. m.
	6:08 p. m.	7:14 p. m.
	6:38 p. m.	7:44 p. m.
	7:08 p. m.	8:14 p. m.
	7:38 p. m.	8:44 p. m.
	4:38 p. m.	5:44 p. m.
	5:08 p. m.	6:14 p. m.
	5:38 p. m.	6:44 p. m.
	and 6:38 p. m.	
Then every half hour until 12:38 a. m. Last train at 1:38 a. m.		

Excellent dining car service is provided on trains leaving Highland Park at 9:38 a. m., 1:38 p. m., Above Schedules based on Standard Time

For further information apply to the
CHICAGO NORTH SHORE & MILWAUKEE R. R.

Highland Park Ticket Office
Phone Highland Park 1361

