



**OUR
CORRECT
CLOTHES**
look, fit and feel
Right

Do you want clothes to FIT you?
Then let us measure you.
We can please the man who wants "Individuality"
in clothes. We have thousands of beautiful, superb
materials for you to choose from.
Dress well; it PAYS. You can get an "audience"
when you wear our good clothes.

Wear our good "Nifty" Clothes

S. FELL

13 S. St. Johns Ave. Tel. 307 Highland, Park, Ill.

WINCHESTER



Use A Flashlight About
the House

KEEP a WINCHESTER Flashlight in the
kitchen to flash into the pantry shelves, the
oven or the ice-box. Have it ready to light the
way to the cellar, or down the back-door steps.
Always have a WINCHESTER Flashlight in
the bedroom. Use it in the clothes closet—
keep it beside the bed at night.
Come in and see these Flashlights which we
recommend so highly.

HARDER HARDWARE CO.
Telephone 197 510 Central Avenue
THE WINCHESTER STORE

K. THALIN

TRAINED NURSE
A SPECIALIST IN SWEDISH MASSAGE—SCALP, FACE, ELECTRIC
AND WATER TREATMENT
Three Years Special Study in Stockholm, Sweden
Will be Highland Park Tuesdays and Fridays.
Treatments at private home by appointment.
Ladies and Gentlemen.
For information Address
3249 Leland Avenue, Chicago, Illinois

Leuer's Motor Transportation Co.

DAILY TRIP TO CHICAGO
Baggage and Household Furniture
Carried at Reasonable Rates

508 North Green Bay Road
Telephones 550 Highland Park, Illinois

It's a question whether women's
present style of dressing is a reflec-
tion on their sex or on the sex for
whom they adorn themselves.

After raising their rents because
of the high cost of labor, many land-
lords decide not to make any repairs
because the houses aren't worth it.

**LEGION POST MET
MONDAY EVENING**

**Insurance Expert Explains New
Policies; Plan Member-
ship Drive**

At a meeting of the Dumaresq
Spencer post of the American Legion,
held Monday evening at the Highland
Park club, plans were made for the
observance of Memorial Day. Com-
mittees were appointed and partial
arrangements were made for the ser-
vices to be held on that day.

A state insurance expert from Chi-
cago gave a short talk, explaining
a new form of insurance. He told
the men how to transfer their gov-
ernment war insurance into new civil
policies, as provided for by the na-
tional government.

The attendance at the meeting was
large and great enthusiasm was
shown in the new campaign on foot
to increase the membership in the lo-
cal post. This is part of a general
drive that is being made by the Am-
erican Legion posts to gather into its
membership all ex-service men. There
are a good many former soldiers and
sailors in Highland Park who have
not yet taken advantage of the op-
portunity to join the Legion. It was
explained that an applicant was mere-
ly required to pay the nominal sum
for his first year's dues in order to
become a member.

COMMUNITY SERVICE

A game with Libertyville this com-
ing Sunday, with a Glencoe nine a
week hence and bright prospects for
admission to the suburban league is
the news from the community cen-
ter baseball management. The new
uniforms with community service in-
signia to identify "our own" are ex-
pected to be delivered in time to be
worn in Sunday's game. Weather
permitting a rousing game is as-
sured, for Coach Wink has put the
boys through their pace in strenuous
fashion and their form is decidedly
good.

With card playing stopped at the
Center gambling has ceased. If any
boy is discovered playing any game
for stakes he will be suspended for
a month, and if the offence is repeat-
ed he will be expelled from member-
ship.

The Daniel Boone club meets regu-
larly and all sorts of hikes are plan-
ned for the summer. A camp out over
night is dreamed of when the orga-
nization is more complete and the
weather warms up.

The May party Saturday night at
the High school will be a beautiful
affair. The girls have been at work
for a couple of weeks on the decora-
tions and say they will equal the ef-
forts of the Junior prom and the Wo-
man's club in effect. Mothers of girls
are admitted free to these jolly par-
ties and cordially invited every Sat-
urday night.

**SUPPLEMENTAL
SPECIAL ASSESSMENT NOTICE**

Supplemental Special Warrant
No. 229.
NOTICE: Public Notice is here-
by given that the County Court of
Lake County, Illinois, has rendered
judgment for a second or supplement-
al special assessment to pay the
amount of deficiency in the first As-
sessment upon property benefited by
the following improvement: For the
construction of a cast iron lateral
main water supply pipe, with fire
hydrants, special castings, and shut-
off valves, to be constructed and laid
in, along, and under St. Johns Ave-
nue from the South end of the pres-
ent water main at the intersection of
St. Johns Avenue and Beech Street,
and extending from thence south
parallel with the easterly line of St.
Johns Avenue, and Twenty-one (21)
feet westerly therefrom, for a dis-
tance of four-hundred and seventy
(470) feet, to a point twenty (20)
feet south of the north line of Cedar
Avenue and for the construction of a
cast iron lateral main water supply
pipe, four (4) inches internal diam-
eter with fire hydrants, special cast-
ings, and shut-off valves, from the
last above mentioned point, thence
east in a line twenty-one (21) feet
south of and parallel with the north-
erly line of Cedar Avenue for a dis-
tance of seven hundred (700) feet,
to and connecting with the existing
six (6) inch water main now laid
twenty-one (21) feet east of the east-
erly line of Wade Street, all in the
City of Highland Park, County of
Lake and State of Illinois, as will
more fully appear from a certified
copy of the judgment on file in the
Collector's Office. That the warrant
for the collection of such Assessment
is in the hands of the undersigned, all
persons interested are hereby notified
to call and pay the amount assess-
ed at the Collector's Office in the City
Hall, Highland Park, Illinois, within
thirty days from the date hereof.

FRED W. RUBY,
City Collector.
Dated at Highland Park, Illinois,
this 6th day of May, A. D. 1920. (10)

Tel. 410

J. Smith

Dealer in
JUNK

60 N. First St. Highland Park

WHEN WE MEET AGAIN

Our dear ones leave for a visit to
the old folks or friends.

Now we have time to surprise them
with a lovely garden or out of door
living room by planting flowering
shrubs and vines. Where O. C. Doer-
rier is on the job you will find work
done correctly and very reasonable.
Birds and butterflies linger in Doer-
rier created gardens, since the ma-
terial selected is right; berried shrubs

or trees for the birds, fragrant shrubs
and humming birds for the humming
birds and butterflies. Why not get
his figure to improve your home
grounds, to add to the value of your
lot or estate, to make your place real
homelike, clean and fragrant, and last,
but not least, to make it melodious?
For good gardening and more of it.
Yours truly,
O. C. DORREIR,
Landscape Architect and Forester.
10-Adv—

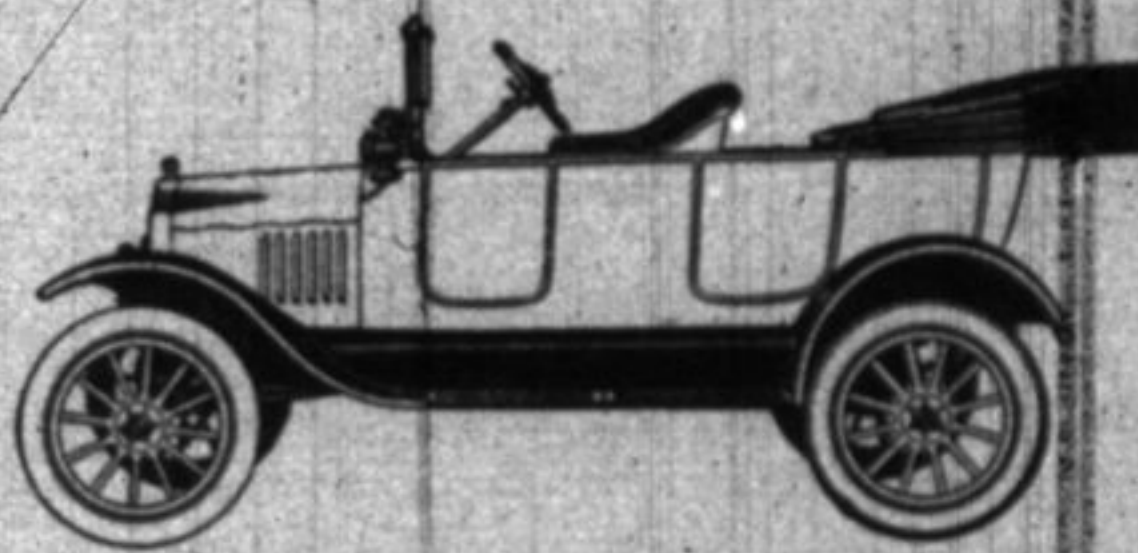
Ford

THE UNIVERSAL CAR

More than two million satisfied owners know
from experience that the Ford car is a real
utility, an economical, powerful, always-reliable
means for increasing the profit in business or add-
ing zest to pleasure. The Ford car meets the de-
mand for prompt transportation in every line of
human activity. The demand grows larger every
day, because of the all-round usefulness of the
car. Is the Ford car not your necessity?

Touring Car, \$575.00; Runabout, \$550.00; Truck
Chassis, \$600.00; Coupe, \$750.00; Sedan, \$875.00.
Prices F. O. B. Detroit, Mich. Electric Starting
Equipment, \$75.00 extra.

INSIST ON GENUINE FORD PARTS



A. G. McPHERSON
Telephones Highland Park 120-121
HIGHLAND PARK, ILL.

Direct to Chicago

Via

The Road of Service

No Taxi, Bus or Street Car Needed

For the Business Man	Trains leave Highland Park	Arrive Chicago
	6:38 a. m.	7:44 a. m.
	7:08 a. m.	8:14 a. m.
	7:38 a. m.	8:44 a. m.

For the Matinee and Shopper	Every half-hour thereafter until	
	11:08 a. m.	12:14 p. m.
	11:38 a. m.	12:44 p. m.
	12:08 p. m.	1:14 p. m.

For the Theatre and Dinner Party	Then every thirty minutes until	
	12:38 p. m.	2:14 p. m.
	1:08 p. m.	2:44 p. m.
	4:38 p. m.	5:44 p. m.

For the Theatre and Dinner Party	and 6:38 p. m.	6:14 p. m.
	5:08 p. m.	6:44 p. m.
	5:38 p. m.	7:14 p. m.
	6:08 p. m.	7:44 p. m.

For the Theatre and Dinner Party	7:08 p. m.	8:14 p. m.
	7:38 p. m.	8:44 p. m.
	Then every half hour until 12:38 a. m.	
	Last train at 1:38 a. m.	

Excellent dining car service is provided on trains
leaving Highland Park at 9:38 a. m., 1:38 p. m.,

For further information apply to the

CHICAGO NORTH SHORE & MILWAUKEE R. R.

Highland Park Ticket Office
Phone Highland Park 1361

