

No Sale Garments Will Be Sent on Approval or Exchanged

Our One Price to all is well known to the Women of Waukegan.

# GLOBE

DEPARTMENT - STORE  
WAUKEGAN, ILLINOIS

Store Hours 12 to 6 Daily, except Saturday Sat's. 12 to 9 p. m.

During this Sale We charge for all Alteration on Sale Garments.

We Continue that Wonderful Opportunity Sale of

## Coats and Dresses

\$35., \$45. and \$50. Values



This Sale is the result of a remarkable purchase in New York by Our Ready-to-Wear Buyer.

# 24.75

See these Beautiful New Garments on Display In Our Window.



The Women of Waukegan and Vicinity took quick advantage of this remarkable Sale. They came to look and stayed to buy. They were here by the scores and they secured values they little dreamed of finding. We've just received and placed on display another lot of this great purchase and you will find this assortment as complete as on the first day of the Sale. They are positively garments worth up to \$50 at the low price of \$24.75.

### THE COATS

Are of Silvertone, Crystal Cloth, Velour, Polo Cloth and Bolivia. Some are silk lined, some are interlined others halflined. Many have large fur collars of Raccoon or Black Possum.

### THE DRESSES

Are of Tricotine, Mens Wear Serge, Tricolette, Satin, Jersey and Velour. The great majority of them are absolutely advanced spring models. Sizes range from 16 to 44.



## Christmas Trees

**D**ON'T be disappointed this year by not having a tree. Leave your order early, as we have only a limited supply.

Our Christmas Toys and Gifts are selling fast. Don't wait. Buy now.

## Harder's Hardware

The Store of Quality--Service--Satisfaction

## SKY ONLY, LIMIT FOR NEWSPAPERMEN HERE IS ONE WHO BECAME A BISHOP

Rt. Rev. Charles Sumner Burch, for Thirteen Years an Editor, Now One of Joint Commission Directing Nation-Wide Campaign.

Out of the noise and tension of editorial rooms, newspapermen have gone to positions strangely contrasted to those they left.

Here is one who left the editorial desk to achieve a bishop's robes.

For 13 years he was Charles Sumner Burch, newspaper editor of Kansas City and Detroit. Today he is the Right Rev. Charles Sumner Burch, Episcopal Bishop of New York.

Formerly his words went from the typewriter to the composing room and so to the columns of the dailies, to help mould public opinion. Now they go out to the members of the Episcopal Church in the Diocese of New York, and beyond, helping to inspire the Church to meet the responsibilities which the day of reconstruction has laid upon it.

For when the supreme body of the Church, the triennial general convention, met recently in Detroit—the city where the Bishop of New York once turned out "copy" for the press—it appointed him to the Joint Commission which, with the authority of the entire Church behind it, is directing the \$43,000,000 Episcopal Nation-Wide Campaign by which the Church plans to expand its work in every field and play its full part in building a new order out of the present chaos.

Bishop Burch saw—perhaps with the old "news sense"—the importance of the Nation-Wide Campaign from the first.

"Providence," said he, in his first pastoral address to the Diocese of New York, following his elevation to the bishopric, "has furnished us, at the beginning of our new mutual relationship, with a task worthy of our highest powers."

The Nation-Wide Campaign is intended to reach and touch the life and purpose of every man, woman and child connected directly or remotely with the Church's existence. If the Church of Christ is to hold fast to and conserve the great spiritual values won through the heroic sacrifices willingly offered by our brave men and boys in the world's most tragic war, it must awaken in each man a keen sense of his individual responsibility for conserving these values.

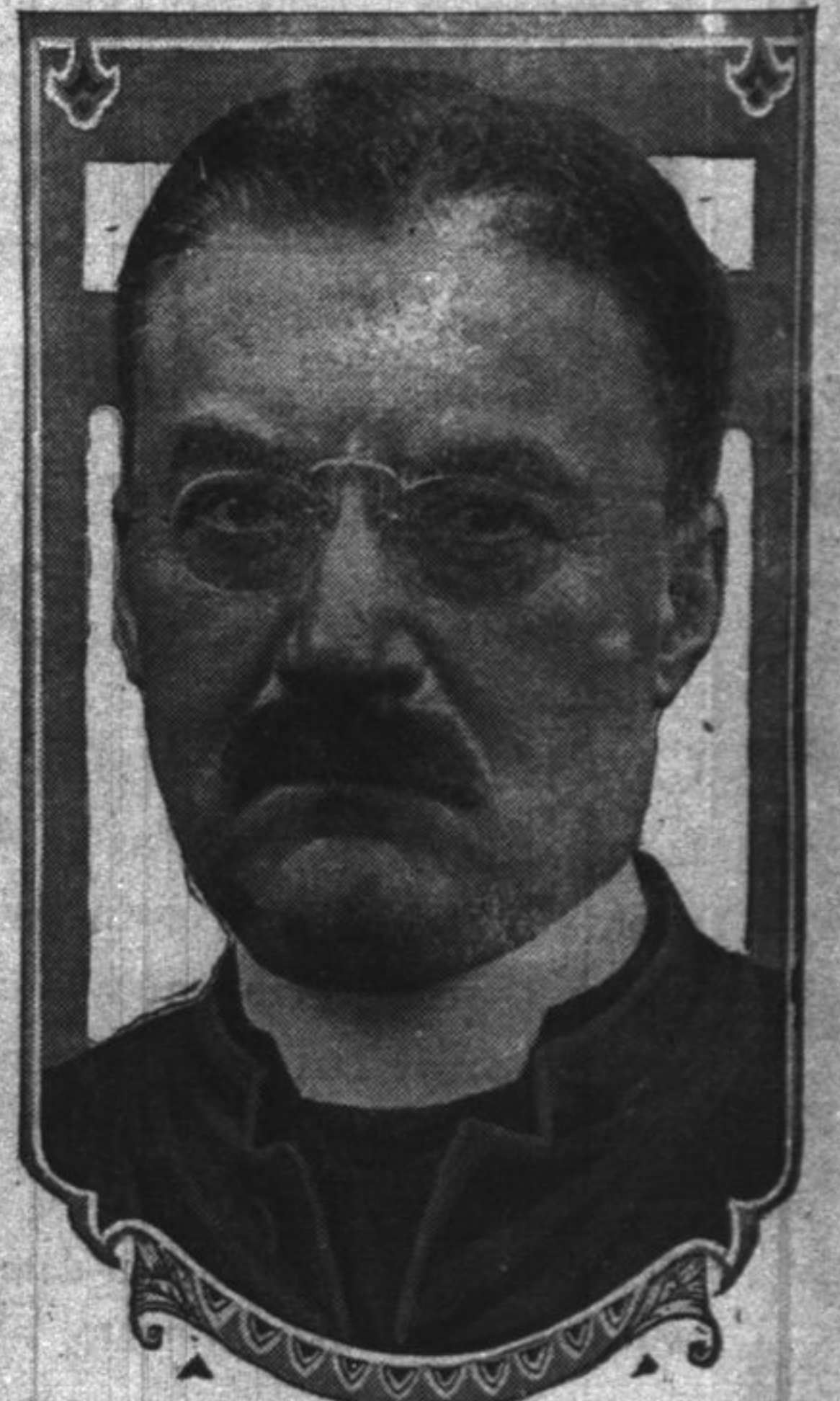


Photo by Paul Thompson  
Rt. Reverend Charles Sumner Burch

### The Main Point.

Eve had formed the bad habit of running away, so to impress her fully with the danger of so doing, her father took her on his knee and told her the story of Charlie Ross—how he was coaxed away from his yard one day by a man who promised him some candy and he never came back to his parents. She listened intently, and at the close of the story she looked up and asked: "Well, did he get the candy?"

### The Maliciously Inclined.

Malicious people are of two types—the actively malicious and the passively malicious. Between the two there is a difference not of kind but merely of degree. The actively malicious are people who delight in belittling and injuring others, whether by petty gossip or outright slander. The passively malicious find a strange pleasure in hearing of anything that is to the discredit of other people.

### Temperature of Leaves.

Some recent investigation of the temperature of leaves made in the deserts and mountains of Arizona and in the Santa Lucia mountains of California have resulted in the discovery that leaves show a very rapid change of temperature at times. These fluctuations are almost constantly going on. Changes of from 1 to 3 degrees centigrade were observed in from twenty to sixty seconds, and if a moderately strong wind is blowing the change may amount to 5 degrees in thirty seconds.

### Submarine Coal Mines.

There are many submarine coal deposits off the British Isles, but so far they are not much worked. The tunnels of the mines at Whitehaven extend some four miles from shore under the Irish sea, however, and there also is some submarine coal mining at Bolness near the Firth of Forth and at Mowbraymouth in Durham.

### Monkeys Hard to Train.

Performing monkeys seldom live more than a few months. Many of them die of fright while being trained, and it is consequently necessary for trainers to keep a large number of animal understudies.