

WILSON LOOKS LIKE WINNER

277 Electoral Votes Seem Sure for President.

CALIFORNIA APPEARS SAFE

Nevada and Washington Also Join List of President's Supporters. North Dakota and Oregon Have Veered to Hughes—Washington is Democratic—Minnesota and West Virginia Doubtful.

Chicago, Nov. 9.—The election for the presidency of the United States is still in doubt. Of the list of states reported as in doubt twelve hours after the close of the polls only three appear to have aligned themselves to a degree that the result of their vote could safely be predicted. After California had given Hughes what looked like a deciding league during Wednesday, that state on Wednesday night again suddenly switched to the Wilson column, and a lead of 1,500 soon grew to one of over 4,500.

The precincts still unreported were about equally divided between what in previous elections were Democratic and Republican strongholds, but all the Republican unreported precincts were in Los Angeles county, and its lead was approaching a slender margin as the canvass proceeded, while the counties heretofore Democratic were increasing that party's margins compared with previous elections.

Washington with seven votes went decidedly in the Wilson column, and was conceded to the President Wednesday night.

Nevada, with three, showed a growing preference for Wilson, and was confidently claimed by the President's supporters, with no disputing it from the Republicans from that state.

The President was still leading in Minnesota, with twelve votes, but the margin was approaching the vanishing

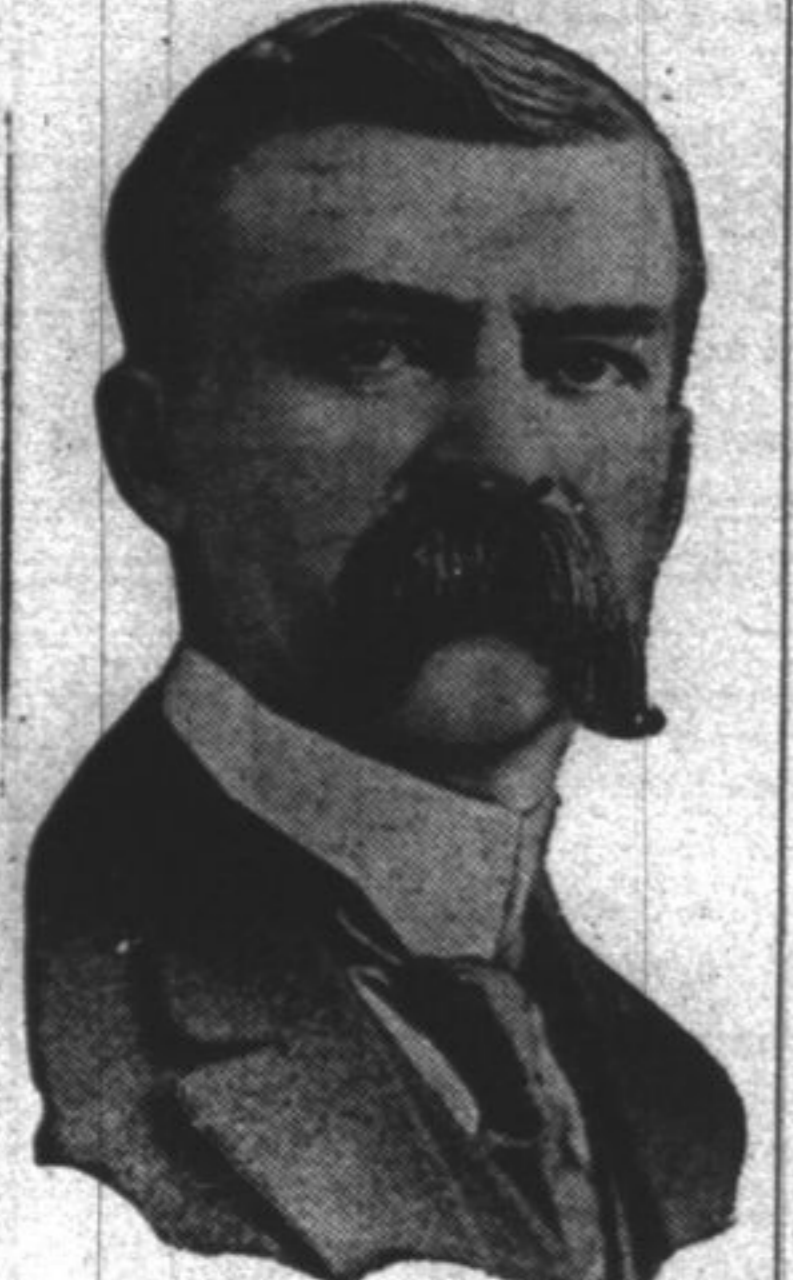


Photo by American Press Association. SENATOR WALSH.

point as rural precincts rolled in. It was stated in a dispatch, however, that several counties in the northern section which have usually been reliably Democratic had not then sent in their returns.

Oregon, with five votes, maintained a Hughes lead. The Republicans carried Multnomah county, in which Portland is situated, by a large plurality and the Democrats appeared unable to show better than an even Steven outside.

But North Dakota, with four votes, which had been put in the Wilson column, suddenly switched and went to Hughes. The turn came with reports from the southeastern section of the state thickly populated with German-Americans.

But while these undecided states were lining up in the columns of the rival parties, West Virginia and New Hampshire broke away from the Hughes lineup, and proclaimed themselves doubtful. At one time the Democrats claimed a lead of 153, in the New England state, but an unofficial statement given out from the office of the secretary of state based on complete returns, put it back in the Hughes fold with a lead for the Republican candidate of 161.

West Virginia, however, was more tantalizing. If left Hughes for the doubtful column after about one-third of its state had reported, and cut the estimated Hughes plurality to a bare 800, but when about two-thirds of the state had reported Hughes led by 1,772.

Big Majority Cut Down
The estimated huge majorities announced in earlier returns for Hughes in several states failed to materialize in most instances save in Illinois and New York.

The lead of 40,000 in President Wilson's state of New Jersey dropped to a bare 10,000.

Indiana did about the same. Wilson sin went from 50,000 to 18,000, and it is expected Michigan will do some dropping from its reported 75,000 lead for the Republicans.

The Apparent Line Up.
The apparent line up of states is: Hughes—Connecticut, 7; Delaware, 3; Illinois, 29; Indiana, 15; Iowa, 13; Maine, 6; Massachusetts, 18; Michi-

LOOKING AT YOU
C. E. Hughes in Pose Best Known.



Photo by American Press Association.

gan, 15; New Hampshire, 4; New Jersey, 14; New York, 45; Pennsylvania, 38; Rhode Island, 5; South Dakota, 5; Vermont, 4; Wisconsin, 13; Oregon, 5; North Dakota, 5. Total 244.

Thirty-four Elect Governors.
The following states voted for governors: Arizona, Arkansas, Colorado, Connecticut, Delaware, Florida, Idaho, Georgia, Illinois, Indiana, Iowa, Kansas, Massachusetts, Michigan, Minnesota, Missouri, Montana, Nebraska, New Hampshire, New Jersey, New Mexico, New York, North Carolina, North Dakota, Ohio, Rhode Island, South Dakota, Tennessee, Texas, Utah, Vermont, Washington, West Virginia, Wisconsin.

The United States senate at present has: Democrats, 56; Republicans, 40.
Senators Chosen.
The following states elected United States senators to succeed Democrats: Arkansas, Arizona, Florida, Indiana (2), Maryland, Mississippi, Missouri, Montana, Nevada, New Jersey, New York, Ohio, Tennessee, Texas, Virginia, West Virginia.

Republicans: California, Connecticut, Delaware, Massachusetts, Michigan, Minnesota, Nebraska, New Mexico, North Dakota, Pennsylvania, Rhode Island, Utah, Vermont, Washington, Wisconsin, Wyoming.
Governors Elected.
Governors have been elected as follows:

Arizona, George W. P. Hunt (D.); Arkansas, Dr. Charles Hilman Brough (D.); Colorado, — Gunter, (D.) Connecticut, Marcus H. Holcomb (R.); Delaware, John G. Townsend, (R.); Florida, M. V. Dorsey, (D.); Idaho, Alexander (D.); Illinois, Frank O. Lowden (R.); Indiana, James P. Goodrich (R.); Iowa, W. P. Harding (R.); Kansas, Arthur M. Capper (R.); Massachusetts, Samuel M. McCall (R.); Michigan, Albert E. Sleeper (R.); Minnesota, J. A. A. Burnquist (R.); Missouri, Frederick D. Gardner (D.); Montana, Frank J. Edwards (R.); Nebraska, A. L. Sutton (R.); New Hampshire, Henry W. Keyes, (R.); New Jersey, Walter E. Edge (R.); New Mexico, E. C. De Baca (D.); New York, Charles S. Whitman (R.); North Carolina, Thomas W. Bickett (D.); North Dakota, Linn J. Franke (R.); Ohio, Frank B. Willis (R.); Rhode Island, R. L. Beekman (R.); South Carolina, Richard L. Manning (D.); South Dakota, Peter Norbeck (R.); Tennessee, Tom C. Rye (D.); Texas, James E. Ferguson (D.); Utah, Simon Bamberger (D.); Vermont, Horace F. Graham (R.); Washington, Henry McBride (R.); West Virginia, Irv B. Robinson (R.); Wisconsin, Emmanuel L. Philipp (R.).

Alaska Looks Democratic.
Fairbanks, Nov. 9.—Defeat of Judge James Wickersham, Republican, and present delegate to congress from Alaska, and the election of Charles A. Sulzer, his Democratic opponent, is indicated by returns.

Arizona Stays Dry.
Phoenix, Ariz., Nov. 9.—Local option appears to have been defeated and the state will remain Prohibition. Capital punishment has been abolished.

SECRETARY BAKER
He Denies He is Going to Resign.



Photo by American Press Association.

WISCONSIN IS IN HUGHES' LIST.
But His Lead in the State Has Been Reduced to 13,064 Ballots.

Milwaukee, Nov. 9.—With five-sixths of the precincts out of 2,250 in Wisconsin Hughes' lead has dropped to 18,000. Wilson's vote in those precincts is 156,867 and Hughes' 174,931. Senator La Follette has the greatest plurality of any of the candidates, his lead over Wolfe with 853 precincts unreported being 59,349. With more than one-third of the state missing, Governor Philipp (Rep.) leads Williams (Dem.) by 86,711.

LODGE LEADS CANDIDATES.
But His Attack on President Aided the Latter.

Boston, Nov. 9.—Henry Cabot Lodge for U. S. senator leads all Republican



Photo by American Press Association.

HENRY CABOT LODGE.
candidates in the state. Lodge's attack on the President aided Wilson materially in the latter's race in Massachusetts.

OHIO IS 80,000 FOR WILSON.
Senator Pomerene and Former Governor Cox Also Victors.

Cincinnati, O., Nov. 9.—President Wilson will carry Ohio by more than 80,000 votes, if the ratio of voting continues that has prevailed throughout the state except for the temporary lead that returns from Cincinnati give Hughes.
Senator Pomerene, with five-sixths of the precincts of the state complete leads M. T. Herrick by over 20,000. The same precincts give Cox a lead of about 14,000 over Willis.

Solid Republican Delegation.
Milwaukee, Nov. 9.—The Wisconsin congressional delegation is completely Republican. They elected Stafford and Cary in Milwaukee over the Democratic and Socialist opponents. Though the county gave Wilson 7,900 this gives Wisconsin a solid Republican delegation of eleven as compared with eight Republicans and three Democrats in last congress.

Suffrage Wins in South Dakota.
Pierre, S. D., Nov. 9.—Best estimates obtainable will give Hughes South Dakota between three and five thousand over Wilson. Prohibition has carried in state by twenty thousand or more and equal suffrage by probably ten thousand.

Colorado 70,000 for Wilson.
Denver, Colo., Nov. 9.—Returns from 1,118 out of 1,451 precincts give Wilson 130,273, Hughes 79,950. The President has carried Colorado by perhaps 70,000.

The Weather.
Cooler.

CHICAGO NORTH SHORE AND MILWAUKEE The All Electric Scenic Route **MILWAUKEE**
Direct to the Heart of Milwaukee

This is the direct, convenient route to everywhere along the North Shore—the route that saves you money and makes your trip most enjoyable. Remember, this is the *new* Electric line—the *new* line that offers every passenger the utmost in travel service. Clean, quick and comfortable—it's all electric all the way.

For Just a Few Miles or For a Long Trip This Route Is the Most Satisfactory

If the children go some distance to school this new North Shore Electric line will take them there—special service mornings and afternoons just for this purpose.

If you wish to go calling or shopping, you will find the North Shore Electric convenient and comfortable.

When guests come to visit you, take them for a sight-seeing jaunt along this North Shore Electric line. Even if you have visited Fort Sheridan and the U. S. Naval Training Station, you will enjoy seeing them again. The North Shore woods are wonderful now in their Autumn colorings. A view of Lake Michigan from the majestic bluffs near Fort Sheridan is something you will long remember.

Ask Ticket Agent for Descriptive Folder and Time Cards

It will help you considerably to be familiar with the running time and schedules on this new North Shore Electric line. 30 limited trains daily—numerous "locals." Roomy, easy-riding cars—many all-steel; double track nearly all the way. Direct connections at Central Street, Evanston with fast express trains on Chicago Elevated Railroads.

Chicago North Shore and Milwaukee Railroad
General Offices: Highwood, Illinois 'Phone Highland Park 87
Executive Offices: 72 West Adams Street, Chicago 'Phone Central 8280

ILLINOIS NEWS BRIEFS

Gilbert Stevens, 60 years residing within twenty miles of Danville, was in the city for the first time Oct. 24.

Thomas Motesinger, a former alderman of Marion, was crushed to death while working in the Enshinger mine.

Sparks from a passing engine are believed to have started a fire which destroyed the whole village of Little Indian.

Attorney Johan Waage, former state senator, was arrested at Chicago, charged with passing bogus checks at Springfield.

John Oliver, aged seventy-six, and Mrs. Francis Miller, aged seventy-two, were married at Hanover. Both are grandparents.

November 21 has been fixed for the special election to vote on the proposition to establish a Sterling park district.

By papers issued at Springfield the General Excursion company of Quincy, was incorporated to run excursions on the Mississippi river.

Yorkville schools were ordered closed for two weeks, owing to the discovery of a case in infantile paralysis, the first in Kendall county.

C. D. Wing, one of the oldest residents of St. Charles, Ill., who died at the age of eighty-one, was the second mayor of St. Charles in 1878.

Merchants of Freeport announce having annulled the practice of granting discounts to clergymen dressmakers and clerks of other stores.

Melvin Garland, twenty-six years old, of Bingham, Ill., a Clover Leaf brakeman, fell under the wheels of a train at Herrick and was killed.

The Medota authorities have offered \$200 for the capture of Jesus Gonsales, a Mexican, who on the night of Sept. 26, killed a fellow countryman.

Daniel Franklin Nolan, a farmer of Franklin county, committed suicide by placing a trace chain around his neck and hanging himself to a rafter in his barn.

John Lowe, a well-known Pana farmer, died at Pana from blood poisoning, caused by a gunshot wound, which he received at the hands of a boy hunter.

One hundred relatives attended a dinner given at his home in celebration of the ninety-ninth birthday anniversary of Fite G. Roseman, Ogle county's oldest citizen.

Fuel is Scarce and High
Chances are it will be more so
Hard Coal Coke Soft Coal
Now in Stock
North Shore Fuel & Supply Co.
230 N. St. Johns Avenue
PHONE 67 HIGHLAND PARK, ILL.

Garden Settings
Ornamental Radiator Enclosures

Antiques Restored
General Cabinet Work
Marco Ugolini
9 N. Second St. Telephone 407

SAFEST DRUGGISTS SELL E-RU-SA PILE CURE
BECAUSE it contains no opiates, no lead, no poisonous drug. All other pile medicines containing injurious narcotics and other poisons cause constipation perpetuate piles and DAMAGE all who use them. E-RU-SA is a guaranteed Cure or \$50 forfeit.
EARL W. GSELL, DRUGGIST, SOLE AGENT

NOT DIS
Our Presi
Looks on

ELECTION STATES
Anti-Saloon

Columbus, N. the Anti-Saloon reported it had dry torons had tion fights in named were Dakota, Utah Michigan by 4. With the Anti-Saloon twenty-four are now in the Kansas C voted for pro 1,348, the co the prohibi 31,546 for the against it. D all of rural jorty for the ty was 2,119 Kansas C against a si 345 for H. 2 anti-prohibi county at th Juneau, A vote cast in 2,512 were against it.

HUGHES With Nearl Ma Indianapolis latest return that Charl can preside

Photo hold a vote of gave M Both Watson United over th Jam been e 14,071 turns a

Chic minor electe 21,336, count. Philip ponen