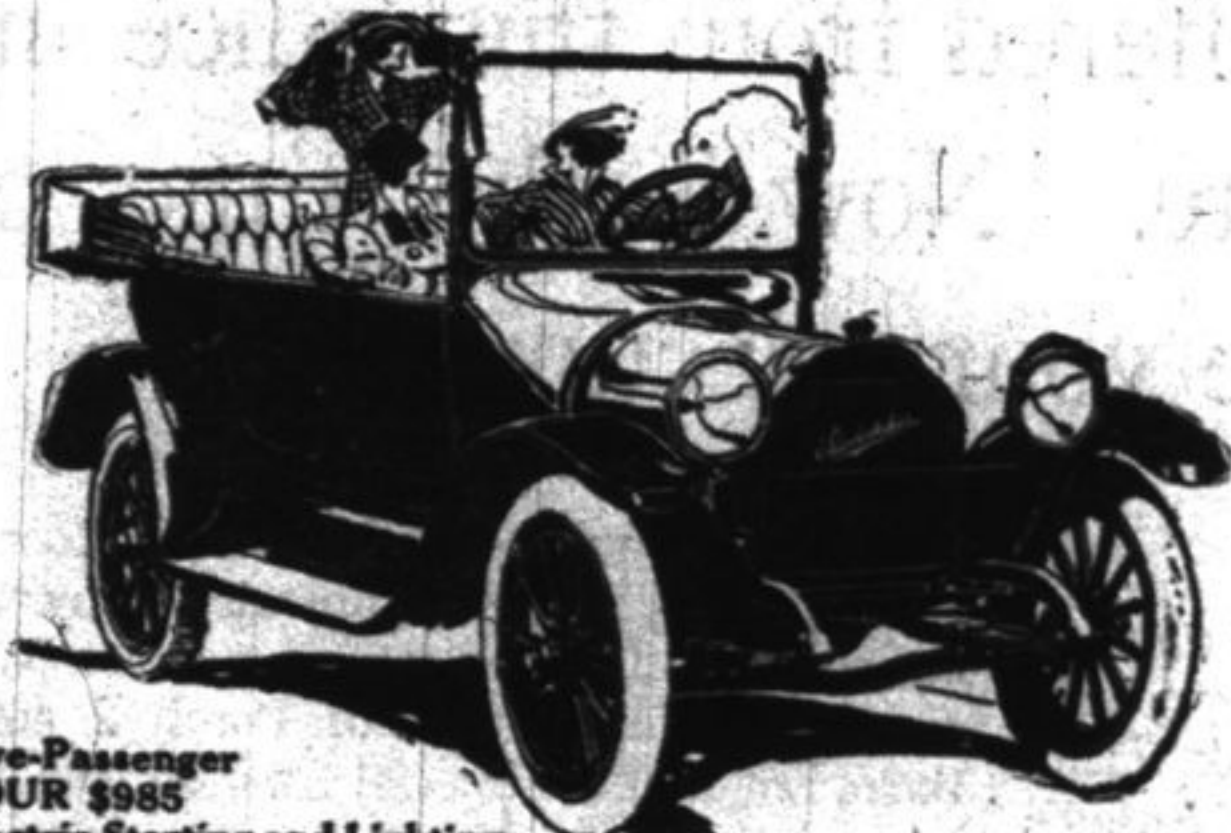


You are Cordially Invited
to make use of the privileges of the
CHRISTIAN SCIENCE READING ROOM

119 East Central Avenue
Hours 9 to 12 a. m., 1 to 5 p. m.
Every day except Sunday
Maintained by First Church of Christ, Scientist, of Highland Park

STUDEBAKER



Five-Passenger
FOUR \$985
Electric Starting and Lighting
Full Floating Rear Axle—Extra Size Tires

ANNOUNCEMENT

"We are now in a position to make immediate deliveries on our Studebaker four and six cylinder models, \$985.00 and \$1385.00 respectively."

LAKE FOREST GARAGE
HARVEY A. BEILGARD, Prop.
Lake Forest, Illinois



BREAD WE ARE BUILDING A BREAD TRADE

of such proportions that home baking is rapidly becoming the exception rather than the rule. The very best of home bakers have learned that our bread is at least as good as any they can bake. It is cheaper, too. Try a loaf or two and then tell us, if you can why you should bother with baking when we do it so well and cheaply for you.

Geary's Home Bakery
20 W. Central Ave.

SPECIAL SALES

We have purchased 1 1/2 tons
of those celebrated
PEACOCK HAMS

and will sell them at 15 1/2c per pound
from March 27th to April 4th

Palace Cash Meat Market

LEO A. HAAK, Mgr.

24 W. Central Avenue - Highland Park, Illinois - Telephone 160

Choice Meats will be sold at wholesale prices. We can cut your meat bill 20 per cent. Compare this price list with the present price that you are now paying

- Roasting Chickens.....21c
- Sirloin Steak.....20c
- Short Steak.....20c
- Pure Lard (rendered).....13c
- Native Rib Roast Beef, 1st and 2nd cut.....18c
- Native Pot Roast Beef.....12 and 14c
- Sirloin Roast Beef.....18c
- Hamburg Steak.....18c
- Round Steak.....18c
- Peacock Brand Bacon.....25c
- Breakfast Bacon.....17c
- Leaf Lard.....11c
- Canned Tomatoes.....8c
- Wisconsin Canned Corn, per can.....8c
- Wisconsin Canned Peas, per can.....8c
- Home made Pork Sausage.....15c
- Pork Loins.....13c
- Pork Tenderloins.....30c
- Spare Ribs.....12c
- Pork Shoulder.....12c
- Rump Corned Beef.....15c
- Stewing Chickens.....20c
- Strictly Fresh Eggs, per doz.....2c0
- Currants 14 oz. per pkg.....10c
- Raisins 15 oz. per pkg.....10c

We do our own delivering
We also can give a very good price on canned goods
It will pay you to visit this Market, you will
without doubt save money

A BABEL OF TONGUES.

The World's Languages Now and What May Be in the Future.

How many men, if asked how many languages there are in the world, could give anything like an accurate answer? The average man's knowledge or ability to speak languages rarely exceeds two besides his native tongue. It may appear strange, but it is nevertheless true, that there are over 4,000 languages spoken by mankind, while the number of dialects exceeds this. There are more than sixty vocabularies in Brazil, and in Mexico the Nahuatl is broken up into some 700 dialects. There are hundreds in Borneo, and in Australia there is no classifying the complexities. Let us assume that fifty dialects, on an average, belong to each language and we have the colossal total of 200,000 linguistic abilities.

A century hence the probability is that there will only be four languages of importance in the world. Central Europe may produce a newer and more straightforward German language. Imperial English may reign alone over the North American continent, while a more businesslike Spanish will be used in South American states. Then Russia may take on some more rich Slavonic dialect, which will blend the races of eastern Europe and central Asia into a harmonious federation. So that in future these four languages will enter into what may be a never ending competition.—Exchange.

ERRORS OF SCULPTORS.

Statues in England Noted For Crude Blunders in Modeling.

Some of the statues in public places in England are notable for certain unique symbols or glaring errors in modeling. One of the former kind is the statue of Sir Anthony Ashley at Wimborne, Dorset. Carved out of a stone at the feet of the figure is a faithful representation of a cabbage, indicating that Sir Anthony introduced the vegetable from Holland into England.

Even more peculiar is the carving on one of the four panels on the Queen Victoria statue in George square, Glasgow. The subject is the knight of James Anderson, the lord provost of that city. As no sword was available the ceremony was performed with an umbrella, and the substitute has been copied by the sculptor. This same statue is incorrect in one important detail. The stately pose of the horse is negatived by the position of the hind legs—a position which is only possible when a horse is racing at full speed.

Perhaps the worst equestrian statue in the world is that erected in front of Trinity college, Dublin, to the memory of King William III. Among other faults, one of the forelegs of the horse is straight and the other curved considerably, yet both hoofs meet side by side on the pedestal.—London Spare Moments.

Our Longest Canal.

The longest canal in the United States is the Erie canal, which covers a distance of 387 miles. The Florida East Coast canal is 350 miles long and runs from Mayport, Fla., to Miami. The Miami and Erie canal, between Cincinnati and Toledo, O., is 274 miles long. There are three canals in Pennsylvania, the Schuylkill Navigation company, between Mill Creek and Philadelphia, 108 miles; the Pennsylvania, between Columbia, Northumberland and Wilkesbarre, 103 miles, and the Lehigh Coal and Navigation company, between Coalport and Easton, 108 miles long. The longest canal in Europe is the Berlin-Stettin, 120, and the next longest, the Suez, 103 miles.—Philadelphia Press.

Beauty of Zambesi Falls.

To realize fully the wondrous beauty of the Zambesi falls, Rhodesia, one must have time to linger and watch the ever changing scene. The depths of the chasm below are veiled from sight by the rising columns of opalescent mist, and above the yawning abyss the sun glints and sparkles, weaving the drops into a magnificent rainbow. Three hundred feet below roars and boils the swirling flood as it emerges from the Boiling Pot, rushing on down the zigzag gorge between towering cliffs of rock, narrow, fierce and of unfathomable depth.—African World.

She Was Frank.

The moving picture director was having trouble in getting one of the scenes right. The girl was supposed to resist an attempt to kiss her, but the rehearsal was far from satisfactory.

"Think, now," said the director, coaching her. "haven't you ever tried to stop a young man from kissing you?"

"No," was the girl's frank reply.—London Answers.

Modern Supercilliousness.

"My ancestors came over in the Mayflower."

"Yes?" rejoined Mrs. Cumrox. "I understand that the fare was really quite low. But, gracious me, the boat must have been terribly overcrowded."—Washington Star.

Fairly Warned.

Cholly—Before I met you I thought of nothing but making money. Ethel—Well, keep right on! Pop ain't so rich as folks think!—Dallas News.

A Matter of Taste.

The Woman—I'd rather live on bread and water than on charity. The Tramp—Yes, mum; there's no account in' fer taste.—Philadelphia Ledger.

Luck counts once in awhile; brains count all the time.—W. H. Lough.



Spring Display of Fine Footwear For Every Member of the Family

This spring our display of Footwear for the whole family exceeds anything we have heretofore attempted. While "togging" out for Easter don't overlook your shoes. See our window for suggestions. We have many new shapes and styles. Our new cloth top colored shoes for women which sell for \$3.50 and \$4.00 cannot be excelled anywhere.

Florsheim Shoes for Men are Shoes of Quality \$5.00

Shoes made like New in our Repair Department

J. A. Blomdahl

Fine Footwear

17 St. Johns Ave. Phone 247



Trinity Church Notes

There is to be an Easter cake sale at the Trinity Parish House on Laurel Ave., Saturday afternoon, April third. Home-made Easter cakes, candies, cookies and other features such as dolls' hats, all sorts of fancy work, colored Easter eggs and balloons will be on sale. Tea will be served from two thirty to five thirty. The affair is in charge of the Junior auxiliary girls.

OLD ENGLISH HOUSES.

In the Days of Wooden Huts, Thatched Roofs and Clay Floors.

The habitations of English common people for centuries consisted of a wooden hut of one room, with the fire built in the center. To this hut, if a man increased in family and wealth, a lean-to was added and, later another and another. The roofs were of thatch, the beds of loose straw or straw beds with bolsters of the same laid on the floor or perhaps eventually shut in by a shelf and ledge like the berths of a ship or by a small closet.

The Saxon thane or knight built a more pretentious "hall," a large open room like the Roman atrium with a lofty roof thatched or covered with slates or wooden shingles. In the center of the hard clay floor burned great fires of dry wood, whose thin acrid smoke escaped from openings in the roof, above the hearth or by the doors, windows and openings under the eaves of the thatch.

By day the "hearthmen" and visitors, when not working or fighting, sat on long benches on either side of the fire and, as John Hay puts it, "calmly drank and japed," or, gathering at long boards placed on trestles, regaled themselves on some sort of porridge with fish and milk or meat and ale.

At night straw or rushes spread on the floor formed beds for the entire company in the earlier and ruder days, when the "baser sort" were glad to share their straw with the cows.

PUBLIC SERVICE

The Economic side of the subject should also be considered in selecting wall paper.

Because some wall papers are more light absorbing and therefore destroy light rays.

For instance a room papered in chocolate colored paper would require 18 times as many lamps or windows to make it as light as a similar room papered in white.

The percentage of light absorbed by various colored wall paper as shown by laboratory test is:

White	30	Chrome Yellow	38
Orange	50	Plain deal	55
Yellow	60	Light Pink	64
Emerald Green	82	Dark Brown	87
Vermilion, Blue green, Cobalt blue		Deep Chocolate	96

PUBLIC SERVICE COMPANY

OF NORTHERN ILLINOIS

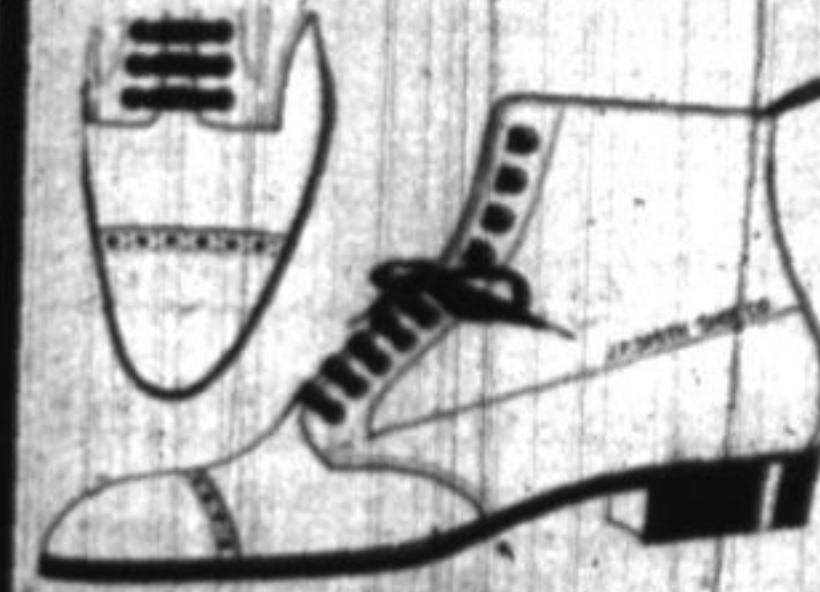
See Our Easter Display

of Shoes for Men, Women and children

Our Spring line is now in

CHICAGO

Frank Rectenwald
111 E. Central Avenue
Phone 446



Nasturtiums Special Mixture
Vaughan's Seeds
ESTABLISHED 1874
D. C. PURDY & SONS INCORPORATED

See Hepburn's Bargains on Page Seven