

# WORLD'S GREATEST EXPOSITION NEARING COMPLETION

## Splendors of the Panama-Pacific International Exposition Revealed by Its Present Progress.

### SUPERB WORKS OF SCULPTURE AND ART IN COLOSSAL EXHIBIT PALACES FOR AMERICA'S PANAMA CANAL CELEBRATION.

**G**LINTS of gold from vast oriental domes, Venetian blue on minarets, prodigious works of sculpture and the arrival of notables from all parts of the globe give glimpses of the great Panama-Pacific International Exposition as it will appear when its gates swing open to the world on Feb. 20, 1915.

Not for many years will the world be enabled to enjoy so marvelous a collection of the works of contemporary sculptors. The World's Columbian Exposition at Chicago first proved that the greatest talent might be engaged to produce work of even temporary value. Since then more and more attention has been given at each succeeding exposition to sculpture as a form of decoration, and the great Panama-Pacific International Exposition at San Francisco promises to surpass even Chicago's exquisite display.

Every phase of the exposition is far advanced. Thirty-three of the world's nations will participate with government displays, Argentina leading with a government appropriation of \$1,300,000 gold.



AIRSHIPS WILL RACE AROUND THE GLOBE FROM SAN FRANCISCO IN 1915.

**A**ERONAUTS from all the civilized nations of the globe with every standard type of air craft driven by motors will participate in an aerial race around the world, which will be a feature of the sporting events to be held during the Panama-Pacific International Exposition at San Francisco in 1915.

The race will start from the grounds of the Exposition in May, 1915, and will end there. Three hundred thousand dollars has been hung up in prizes for this stupendous world girdling contest. A number of the world's greatest aviators have signified their intention of entering the races. The recent flight of Stoeffler, ending at Mulhausen, Germany, in which he covered 1,375 miles, convinces aviators that long flights are a matter of adequate supply stations. The above photograph shows the route around the world and the various supply stations.



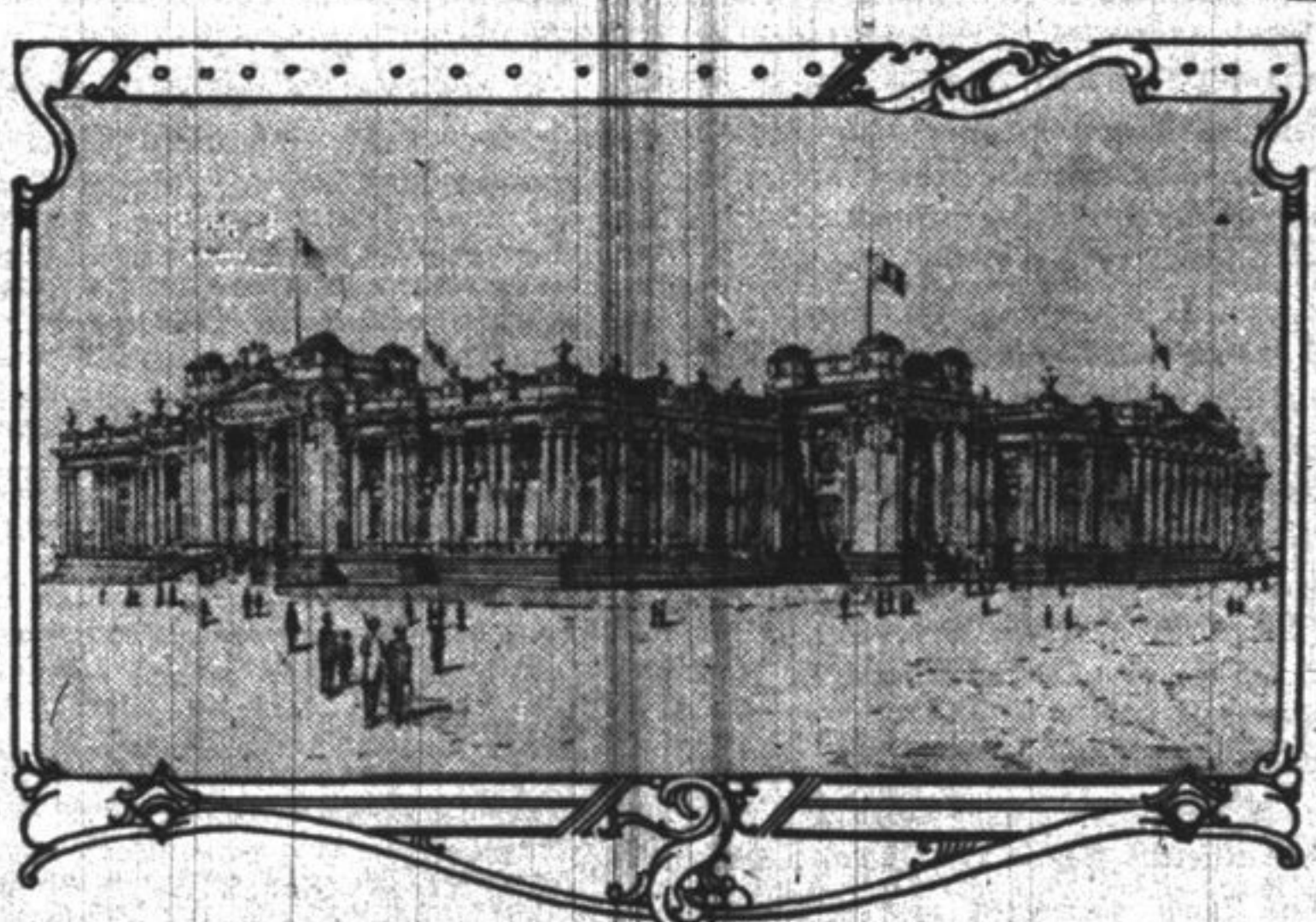
"SUNSHINE" AND "SPRING" AT THE PANAMA-PACIFIC INTERNATIONAL EXPOSITION, SAN FRANCISCO, 1915.

**T**HE large group at the right is "Spring," by Furio Piccirilli, one of the groups in the Court of the Four Seasons at the Panama-Pacific International Exposition, San Francisco, 1915. At the left is "Sunshine," by A. Jaegers, who has created a companion statue, "Rain."



Copyright, 1914, by Panama-Pacific International Exposition Co.  
CLASSICAL FIGURE FOR GREAT EXPOSITION COURT, PANAMA-PACIFIC INTERNATIONAL EXPOSITION, 1915.

**T**HE vast west court, the Court of the Four Seasons, at the Panama-Pacific International Exposition in San Francisco in 1915 will be adorned with a number of the finest productions of the world's greatest sculptors. Not only will free standing groups and independent pieces of statuary be set throughout the court, but its walls, its lofty colonnades, the picturesque recesses, will be embellished by much sculpture of a decorative type. The classical piece above will be used to decorate the arcade of the court and is by August Jaegers, the famous sculptor.



Copyright, 1914, by Panama-Pacific International Exposition Co.  
CANADA AT THE PANAMA-PACIFIC INTERNATIONAL EXPOSITION, SAN FRANCISCO, 1915.

**P**LANS for the Canadian building at the Panama-Pacific International Exposition at San Francisco in 1915 have been approved, and the work on the great structure has started.

The Canadian Palace, as it is officially named, will be one of the largest and most imposing of the foreign buildings, having a length of 340 feet, a width of 210 feet and a height of 50 feet, and will cost in the neighborhood of \$300,000. It will be the largest building ever erected by Canada at an international exposition, covering 65,000 square feet, and will house one of the most elaborate and comprehensive exhibits of the Dominion's resources and products ever shown on foreign soil. Six hundred thousand dollars has already been voted by the Canadian parliament for the building and exhibits, but a further grant, bringing the appropriation up to \$1,000,000, will be recommended by the government.

Canada at the Panama-Pacific Exposition is following the same policy that has obtained at former expositions—namely, the display of specimens or exhibits of the natural products of the country—agricultural, horticultural, mineral, forest and fisheries—for the purpose of showing her climatic advantages and her resources to the great number of people who will visit the Exposition. Attention will be devoted to transportation facilities, and the railways will be assigned considerable space in the building. Practically the entire exhibit of Canada at the recent Ghent exposition—and it was conceded by all judges a most magnificent display—is en route here now, while many new and attractive exhibits are being prepared in the various provinces.

The exhibit will be under the supervision of Colonel William Hutchinson, who will represent the Dominion government.

**GREENE'S**  
230 S. Michigan Boulevard  
Near Jackson Blvd., Railway Exchange Bldg., Ground Floor

**Fashionable Apparel FOR WOMEN**  
AT PRICES THAT ARE NOT EXCESSIVE

As a special inducement—to gain the Easter patronage of the suburban women of fashion—we offer any  
**SUIT—GOWN—COAT**  
in this shop marked up to \$35.00 for  
**\$19.75**  
Charge Accounts Invited

**Electric Fixtures**  
**Wiring**  
**Repairing**

Estimates gladly furnished on all work and Fixtures

**Robert Greenslade**  
134 North Second St.  
Phone 805-L

**KIMBALL PIANOS**  
*The Artists Favorite*

**A Delightfully Responsive Touch**

The artist's greatest need, the vibrating musical tone quality, which enables him to transmit his meaning to the audience, and a perfect adjustment of mechanism, make a tremendous combination. Kimball Pianos combine these qualities in the highest degree, hence their superiority and predominance on the concert stage, in the studio and in the homes of discerning music lovers. They are

**The Premier Pianos of the World**

and are so unversally recognized. The approval of the world's greatest pianists, singers, violinists, conductors and educators has ever signified MERIT. Hundreds of these artists and educators have indorsed the Kimball.

**KIMBALL PLAYER-PIANOS**  
*Perfect as Pianos—Perfect as Players*

These wonderful instruments are available for every member of the family. The player mechanism in no way interferes with the use of the instrument manually. The pianist plays in the regular way, and others in the use of the music roll find perfect enjoyment in playing the music as they interpret or as the mood calls forth. They are the acme of melody.

**One Price to All**

Every Kimball instrument is marked in plain figures, showing the lowest price at which that instrument can be sold, according to the best merchandising. The inexperienced and the shrewd buyer here obtain the same value.

**MUSIC ROLLS:** For all 88-Note Player-Pianos. Every variety of music—classical, popular, operatic, sacred.  
*Inquire About Special Library Privileges*

YOU WILL FIND HERE A VERY COMPLETE STOCK OF  
**VICTOR VICTROLAS, COLUMBIA GRAFONOLAS**  
RECORDS AND ALL SUPPLIES FOR SAME

*Installment Terms are granted as may be necessary to accommodate those who do not wish to pay all cash.*

**W. W. KIMBALL CO.**  
Established 1857  
S. W. Cor. Wabash Ave. and Jackson Blvd.

IND...  
By Per...  
For Assistant Sup...  
For Assistant Sup...  
For Town Clerk...  
For Town Collect...  
**JOHN E. CON...**  
122 McGovern  
Highlan...  
For Assessor...  
**THOMAS H. C...**  
1015 St. John  
Highlan...  
For Justice of Pe...  
For Commissioner  
District...  
**Vaughan**  
Now in  
Catalog  
ESTABLISHED  
**D. C. PURDY**  
WOODRIF...  
**Miss Bertha**  
Hair Dressing an...  
124 Green Bay Rd...  
**MISS ELLA**  
Dressm...  
124 Green Bay R...  
**Ladies' Hats**  
Retail or wholesale pr...  
bleaching, and dying...  
Ask for catalog...  
**Chicago Hat Mfg. Co.**  
12 N. Michigan Ave. W...  
**JUST AR...**  
Children's and Misses' Sew...  
Made to...  
Ladies' Dresses and Wa...  
Sewing M...  
**THE NEEDLEC...**  
717-718 Vesulas Bldg.  
Tel. Centr...  
**Acme Massa**  
Scientific Massage, Electro...  
Baths, T...  
Light and Vibrat...  
Hours 10 a. m. to...  
**MISS MAE O...**  
Suite 70, 29 W. Adams  
Telephone H...  
**Expert Chi...**  
China restored, Bronz...  
Marble...  
Missing pe...  
Only exclusive shop...  
**JEAN B...**  
Shop's Bldg.  
Telephone...  
**TREES ANI...**  
Porter's High...  
Illustrated P...  
Write for...  
**PORTER'S**  
Box 60  
NOTE: No ad...  
Have B...