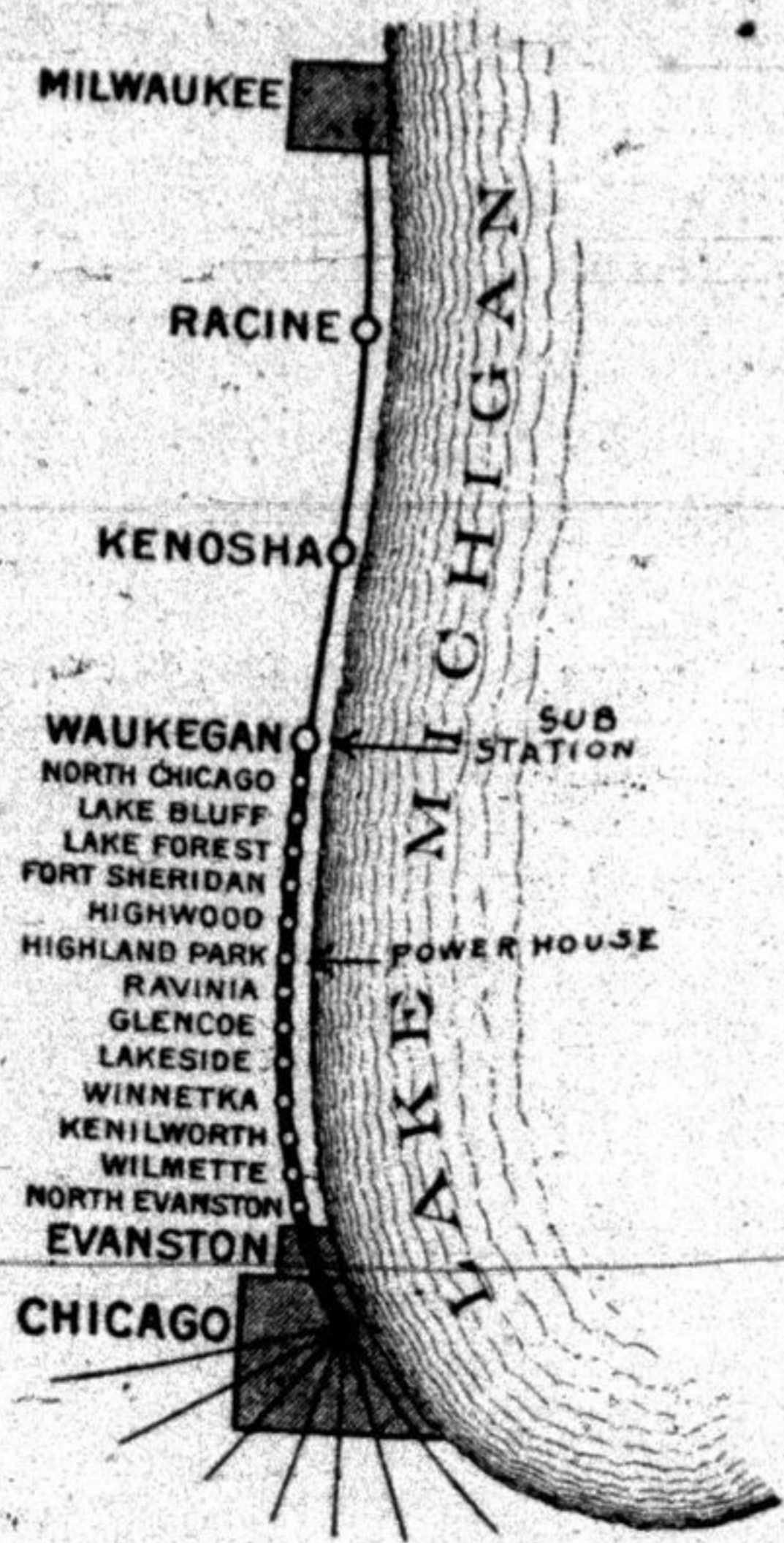


very best class of people along the North Shore, in providing refined, pure and up-to-date entertainment,



THE CHICAGO AND MILWAUKEE ELECTRIC RAILWAY.

the management of Fort Sheridan Park is showing their appreciation of the demand of our people for first-class amusement, and are entirely deserving of the large and remunerative patronage which they are certain to receive.

EXMOOR COUNTRY CLUB.

No matter how often one may have ranged the broad acres which lie with-

remains an unfailling charm to those privileged to membership in the far-famed Exmoor Country club. Before acquiring this magnificent property the leading spirits of the club exhaustively reviewed the advantages offered in many other directions, and their final choice of this site was made after long thought and mature deliberation.

The Exmoor reservation lies west of and immediately beyond the city limits of Highland Park, and includes one hundred and sixty acres, which constitute a natural amphitheater, fringed with native forest growth of oak and maple. The clubhouse is imposingly built upon rising ground and commands an uninterrupted view of the golf links, meadows and timber skirting to the westward.

CLUB HOUSE

The main clubhouse was built in 1897 and follows the modernized Grecian style of architecture. A capacious addition was built this year, and in the near future a further annex will complete the clubhouse in the manner represented by the accompanying illustration. The first floor arrangement includes the gentlemen's lockers, bath-rooms, cafe and sideboard, also the lockers and dressing rooms of the lady members, together with the club culinary apartments. The second floor of the main building is occupied by the capacious and beautiful reception room, in rotunda design, the overhanging balconies being supplied in Doric columns and crowned by an imposing art glass dome of special and appropriate configuration. Flanking

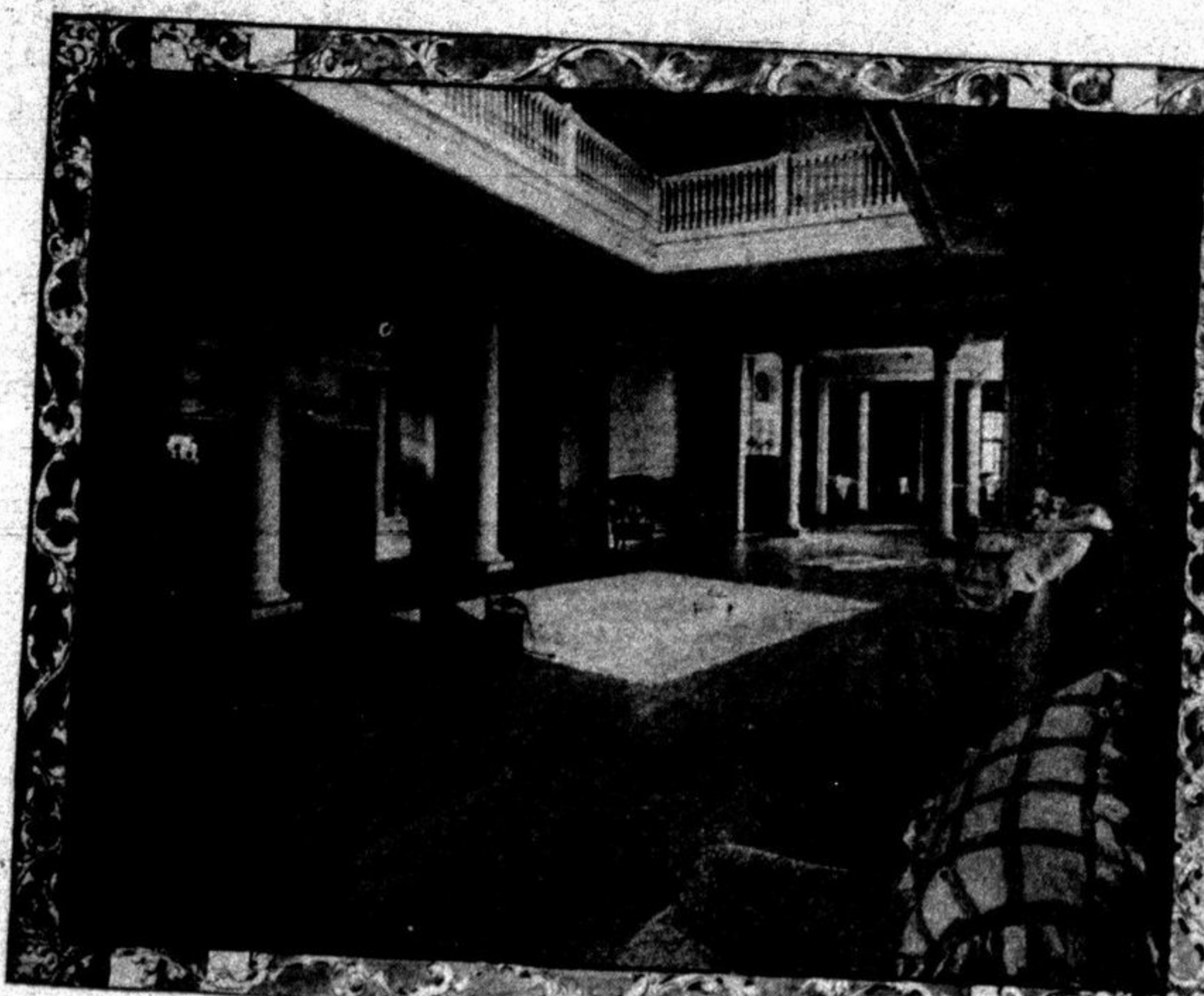
main apartment on the south is the beautiful main dining hall, surmounted by a pillar supported dome. This spacious apartment commands a view of the reservation and contains a magnificent old-fashioned fireplace, which is the counterpart of one in the reception room. The third floor of the main building contains the guest chambers and sleeping rooms of club members, reached from the balconies of the rotunda.

Surrounding the clubhouse on three sides is a spacious veranda which overlooks the entire course and reservation. There are other club buildings in the reservation adapted to the use of club employes and members.

It is the expectation that many members of the Exmoor-club will erect summer cottages upon the grounds, one such having already been completed by Mr. Vernon Cassard.

The length of the golf course—which provides the chief attraction of the club—is one and three-fourths miles, having been lengthened one-half mile this season. Golf experts commend the links in terms of highest praise both for physical perfection and charm of environment. The course contains ten bunkers and six hazards, with a total of 18 holes on the two rounds. The best professional record on this course is 38, made this year by William Andrew. The leading amateur record is 40, credited to Mr. J. DeKoven Towner, made also this season.

The clubhouse faces west, with a magnificent view of the "skokie" bot-



RECEPTION HALL.



DINING HALL.

in the domain of the Exmoor reservation, the sum total of delights embraced in a journey round the links the reception room on the east are the carriage entrance, office, library and retiring rooms. Adjoining the tom lands, bridges and forests beyond. The clubhouse and cottages are surrounded by a woodland of rare