

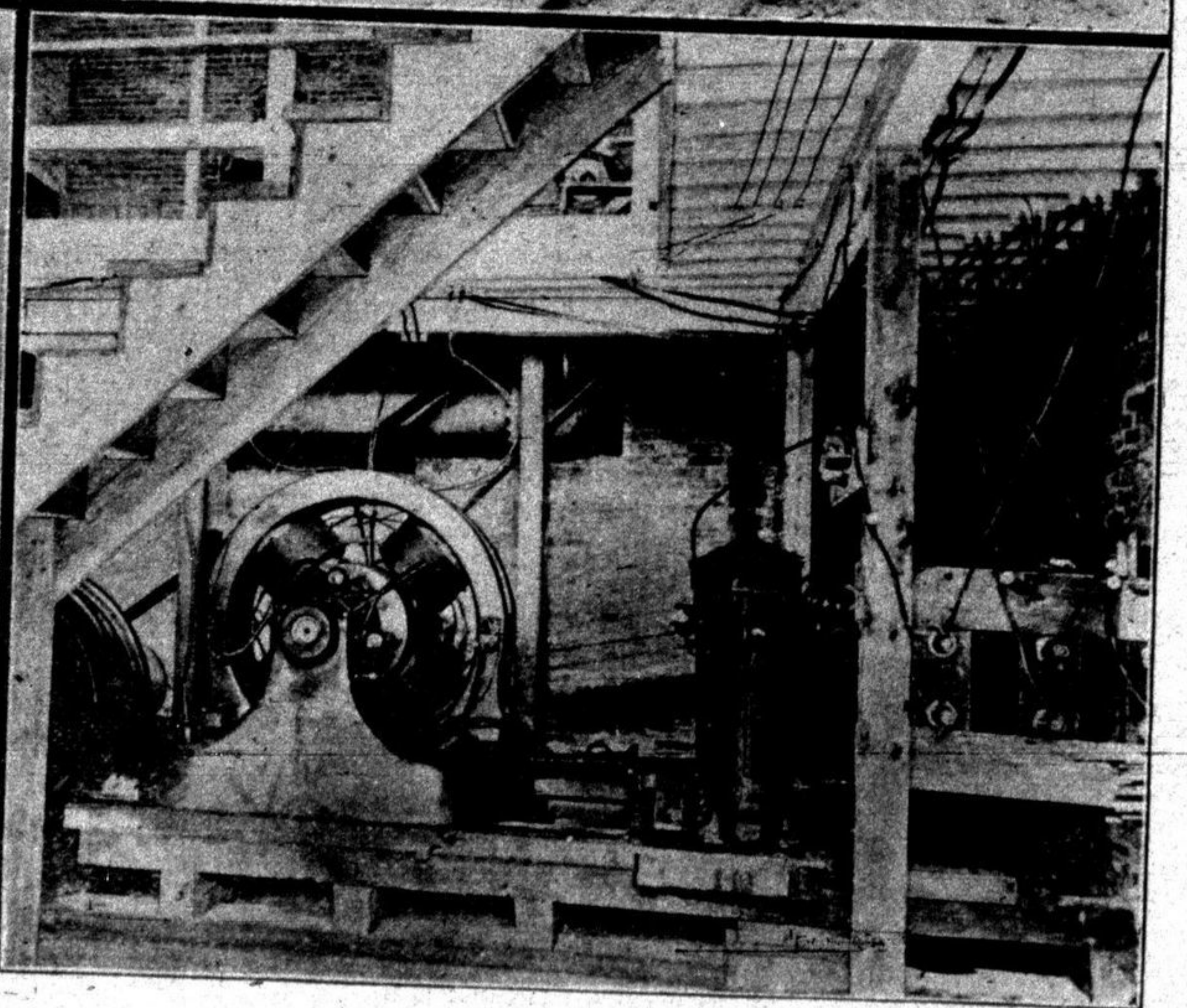
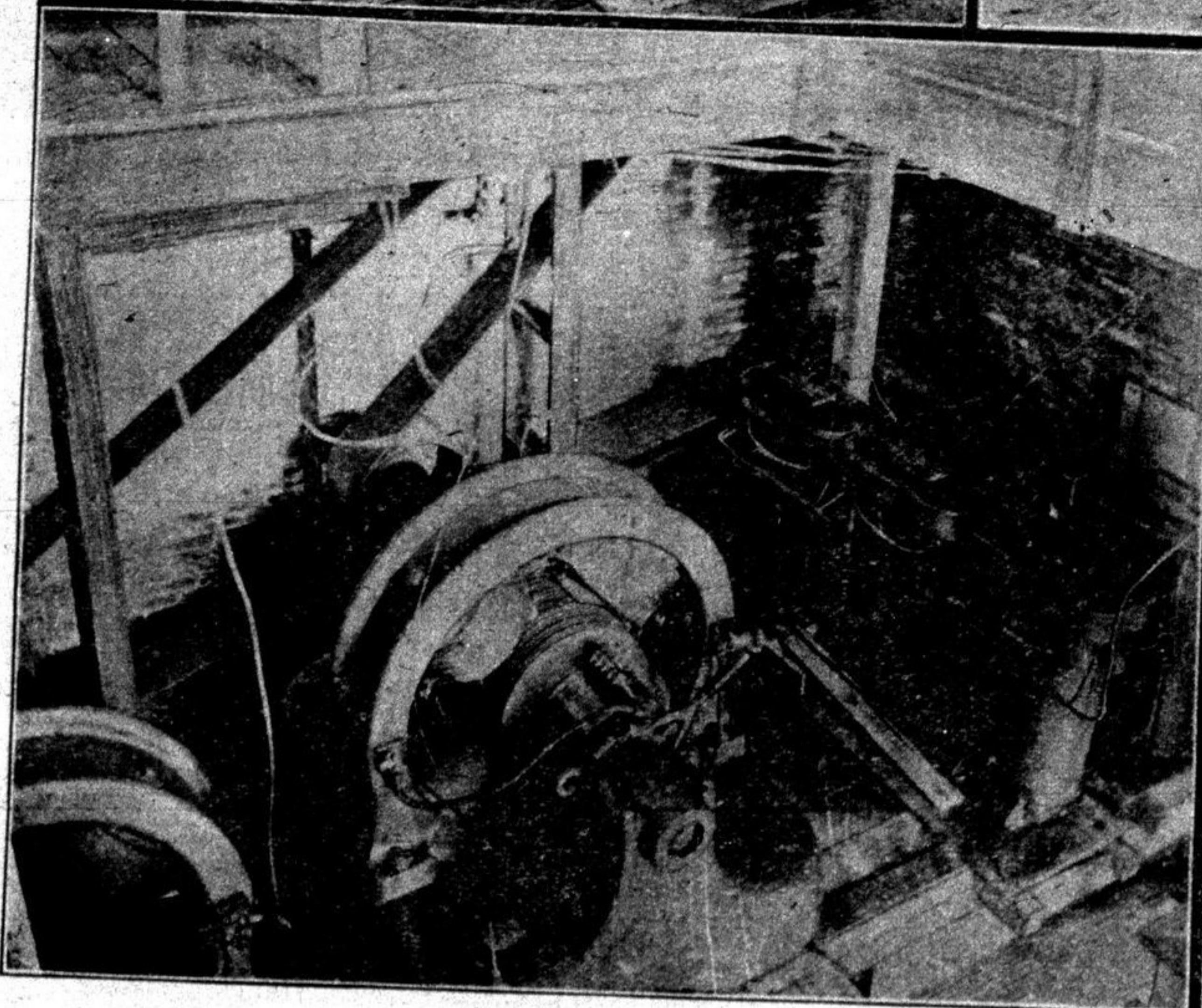
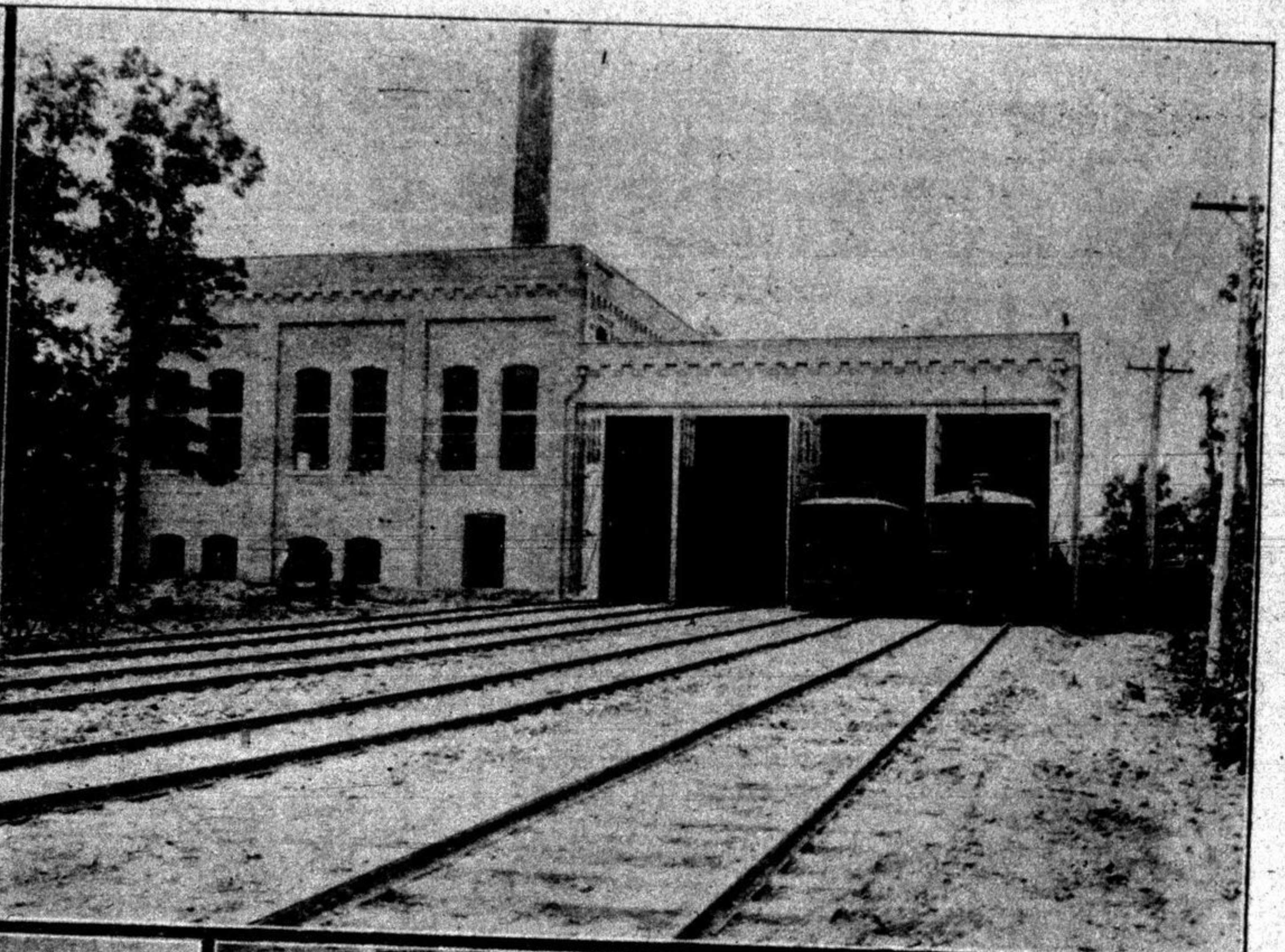
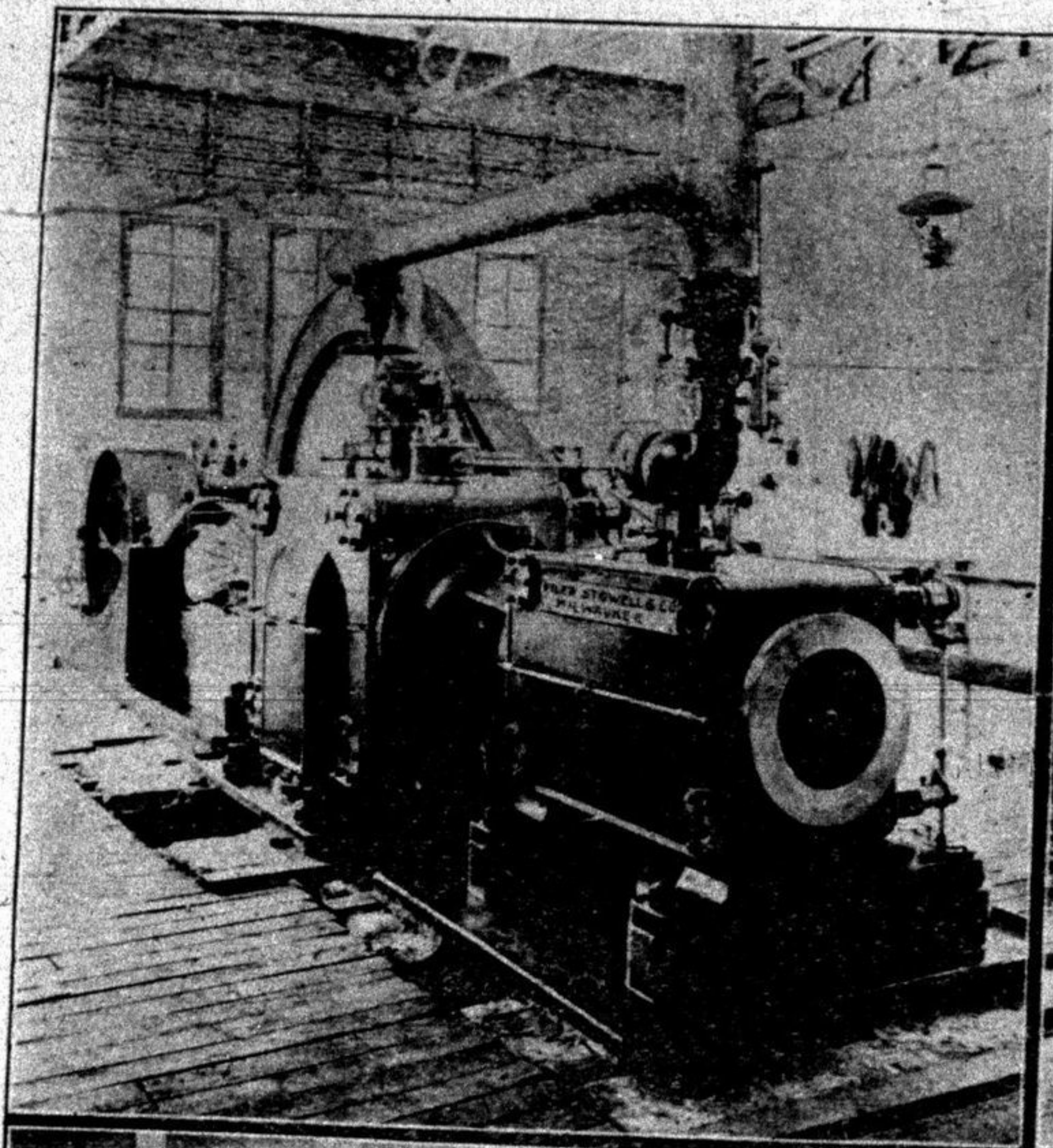
General Electric composite generators capable of producing 5,500 volts, which current is transformed by means of rotary converters and delivered to the trolley lines at all points with a potential of not less than 500 volts. A subsidiary station for regenerating the current is located at North Chicago; all of the current from the line between Highland Park and Waukegan being furnished from the main

Evanston, there is not a single grade crossing of steam or electric road, and every device and safeguard which ingenuity can suggest, or experience recommend will be utilized for the protection and accommodation of the patrons of the "Royal Blue Line."

As soon as the road is completed to Evanston the company will put in operation a local and through express and package service, using

along the North Shore are ideal for an immense and growing traffic between the various cities and towns along this line, and those communities which will spring up as a result of a first-class, high-speed, frequent and cheap inter-urban service such as this company will have the facilities and management for supplying.

The rates of fare, already in force, and which will be continued,



power plant at Fort Sheridan, which embodies the latest and most perfect electrical devices and appliances.

FEATURES OF INTEREST.

It is a remarkable fact that on the entire line, from Waukegan to

for this means magnificent combination express and passenger coaches built expressly for their use by the Pullman company. The accompanying half-tone illustration is from a photograph of one of these cars already built.

The conditions which prevail

are about half the local rates charged by the Chicago & Northwestern Railway in competition with which the "Royal Blue Line" operates for local traffic. This fact, taken together with the greater frequency of service, and the ability to stop at every street