

# Expect more arrests in mortgage fraud case

A 43-year-old Milton man was arrested and faces seven counts of fraud over \$5,000 following a four month investigation into several mortgage frauds and small business loans by Halton Police in the Milton area. Several more arrests and charges are expected.

Police said the total amount of

the mortgages was 7.45 million and small business loans totaled \$750,00.

The investigation focused on local business man, Nicola Mario Cortese, and several family-owned companies. Mortgage and loans were obtained over a period of two years through the

use of fraudulent documents, police said.

Police are continuing to investigate and are asking anyone with information to contact the Milton Investigation Bureau at 905-825-4777 or 905-634-1831 ext. 2415 or by calling Crime Stoppers at 1-800-222-TIPS (8477).



## Acton Jiu-Jitsu

Gain Respect,  
Self Confidence,  
Self Defense, Fitness  
& Fun



Proud member of the Canadian Jiu Jitsu Association

(519)853-2424  
5A MILL STREET, E. ACTON  
www.actonjiujitsu.com



# The Regional Municipality of Halton [www.halton.ca](http://www.halton.ca)

## More Blue and Green for a Better Planet



### Halton Hills Urban Christmas Tree Collection

From January 7 to 25, 2008, Christmas trees are collected on the same day as your Blue Box. Christmas trees are shredded into valuable mulch.

- Please remove all tinsel, decorations, wires and plastic bags prior to collection.
- Ensure trees do not become stuck or frozen in snow banks.
- Please do not place Christmas trees at the curb before your scheduled collection day.
- Put your Christmas tree at the curb by 7 a.m. the morning of your collection day, but no sooner than 5 p.m. the evening before.

### JANUARY

| SUNDAY | MONDAY | TUESDAY | WEDNESDAY | THURSDAY | FRIDAY | SATURDAY |
|--------|--------|---------|-----------|----------|--------|----------|
| 6      | 7      | 8       | 9<br>B    | 10       | 11     | 12       |
| 13     | 14     | 15      | 16<br>A   | 17       | 18     | 19       |
| 20     | 21     | 22      | 23<br>B   | 24       | 25     | 26       |

Look for your 2008 Waste Management Calendar in your mailbox mid-January 2008.

## Winter Tips



Put waste at the curb by 7 a.m. the morning of your collection day, but no sooner than 5 p.m. the evening before.

Containers and bags should weigh no more than 23 kg (50 lbs). Items that are too heavy will not be collected. Do not put material out in cardboard boxes.

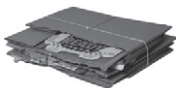


23 kg (50 lbs)



Stack your Blue Boxes and place heavier items such as phone books and magazines on top of loose papers, or bundle and tie papers.

Flatten and tie large cardboard boxes and place securely underneath or between your recycling boxes. Tie cardboard in bundles no larger than 30" x 30" x 8" (76cm x 76cm x 20cm).



During the winter, ensure material is free of snow and ice and is visible to the collection crew. Do not place material on top of snow banks.

## Sustainable Halton

### Our Community. Our Future. Our Plan.

#### Phase II

Halton Region's future – what it looks like and how it works, where and how we grow, and what we protect – depends on **YOU**.

According to the Province's *Places to Grow Plan*, Halton needs to plan for up to 780,000 people and 390,000 jobs by the year 2031. **Sustainable Halton** is a Made in Halton approach to planning for this growth.

Come to an open house to learn about what we've done so far and tell us what you think about the objectives that will guide where we go from here. These objectives are important since they will help us evaluate and assess the various options for where and how Halton will grow – these options will come out in the next stage of the project.

Please join us at one or all of the Public Information Centres listed below. **We look forward to hearing from you.**

### Sustainable Halton Meeting Schedule

#### Evening Sessions (Presentation to begin at 7:00 pm)

| Date       | Location     | Venue   | Time  |
|------------|--------------|---|---|
| January 15 | Burlington   | Auditorium<br>Central Recreation Centre<br>519 Drury Lane             | 6:00 p.m. to 9:00 p.m.<br>Presentation at 7:00 p.m. |
| January 16 | Oakville     | Auditorium<br>Halton Regional Centre<br>1151 Bronte Rd.               | 6:00 p.m. to 9:00 p.m.<br>Presentation at 7:00 p.m. |
| January 24 | Halton Hills | Auditorium<br>Mold-Masters SportsPlex<br>221 Guelph St.<br>Georgetown | 6:00 p.m. to 9:00 p.m.<br>Presentation at 7:00 p.m. |
| January 30 | Milton       | Banquet Hall<br>Milton Sports Centre<br>605 Santa Maria Blvd          | 6:00 p.m. to 9:00 p.m.<br>Presentation at 7:00 p.m. |

#### Afternoon Session (No formal presentation)

| Date       | Location | Venue   | Time                   |
|------------|----------|---|------------------------|
| January 31 | Oakville | Auditorium<br>Halton Regional Centre<br>1151 Bronte Rd. | 2:00 p.m. to 5:00 p.m. |

For more information, please contact either:

Anita Fabac, Senior Policy Analyst at 905-825-6000 ext. 7187, toll-free at 1-866-442-5866, or by email at [Anita.Fabac@halton.ca](mailto:Anita.Fabac@halton.ca)

OR

Alana Fulford, Planner at 905-825-6000 ext. 7354, toll-free at 1-866-442-5866, or by email at [Alana.Fulford@halton.ca](mailto:Alana.Fulford@halton.ca).