

**Puzzle of the Week Sponsor:**

**GRASS CUTTING**

**Transitions Lawn Care**

**Commercial  
& Residential  
Properties**



**905-702-5191**

*Now Serving: Acton, Ballinafad, Erin,  
Georgetown, Glen Williams, Hornby,  
Limehouse, Milton, Norval & Stewarttown*  
**FREE No Obligation Quote**

*"I'm not upset that you lied to me, I'm upset that from now on  
I can't believe in you."* ~ Friedrich Nietzsche

**SUDOKU**

	4			6	2	1		7
	5	7						
	9				8	3		
8	3				4			
2	6						3	4
			6				9	8
		3	5				2	
						8	6	
9	6	3	8				1	

The rules of Sudoku are simple

Enter digits from 1 to 9 into the blank spaces.

Every row must contain one of each digit.

So must every column, as must every 3x3 square.

Each Sudoku has a unique solution

that can be reached logically without guessing.

**Friday,  
March 21<sup>st</sup>  
Solution:**

1	8	7	2	9	6	4	5	3
9	3	5	7	1	4	2	8	6
6	4	2	5	3	8	7	1	9
2	6	8	4	7	9	1	3	5
4	5	3	6	8	1	9	2	7
7	1	9	3	2	5	8	6	4
8	9	6	1	4	3	5	7	2
5	2	1	9	6	7	3	4	8
3	7	4	8	5	2	6	9	1

Difficulty Rating: Medium

**Puzzle of the Week Sponsor:**

**RHPAVING**

ROD HOLLOWAY LTD.

**DRIVEWAYS  
PARKING LOTS**

*Free Estimates*

**(905)  
873-2634**

**(416)  
939-0434**

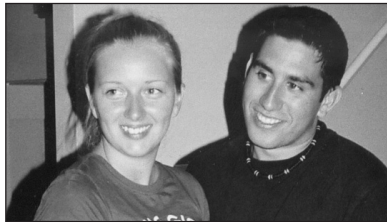
Georgetown, Ont.

**"Paving People making Parking Perfect"**

- Asphalt
- Concrete
- Curbs
- Catch Basins
- Patching
- Crack Filling
- Sealing
- Line Painting

**BUCK & DOE**

for



**Jenn Varey & Jesse Dias**

**Saturday, April 12th, 8 pm**

**Masonic Temple**

Tickets @ Door



**HALTON HILLS**

*Working Together Working for You!*

**TEMPORARY  
ROAD CLOSURE  
DUE TO EVENT**

The following community event will be held within the Town of Halton Hills as follows:

**Spring Into Motion**

Sunday, April 20, 2008  
9:00 a.m. - 10:00 a.m.

Right lane only closed on Miller Drive from Eighth Line east to Argyll Road, continue across Argyll on to Lauchlin Crescent. South lane closed on Argyll from Lauchlin Crescent to just past Huffman Road.

Organized by Feet in Motion

If you require any additional information regarding the temporary road closure please contact the Clerks Department at 905-8973-2601, ext. 2350. 34

1 Halton Hills Dr.,  
Halton Hills, ON L7G 5G2  
Tel.: 905-873-2600  
Fax: 905-873-2347



By Cory Aal  
R.H.A.D.

**... Lend  
Me  
Your  
Ears**

**NOISE INDUCED  
HEARING LOSS (NIHL)**

There are several things that determine whether or not a sound can damage your hearing, including the loudness of the sound and the duration of exposure. Hearing loss can occur as a result of a one-time exposure to a loud sound, or repeated exposure to loud sounds. However, some individuals will be more susceptible to NIHL and there is really no way to tell who these individuals are:

Sounds louder than 80 decibels (dB) are considered dangerously loud and could potentially cause a NIHL. Below is a list of the dB level of some sounds that may be encountered during the course of a day.

- 60 db Average conversation level
- 70 db Vacuum cleaner
- 80 db Alarm Clock
- 90 db Lawnmower
- 100 db Chain saw
- 110 db Rock Music
- 120 db Jet during take-off
- 130 db Jackhammer
- 140 db Firearms

At the Georgetown Hearing Clinic we specialize in custom fitted hearing protection.

The Georgetown  
**HEARING CLINIC**

*We care about your hearing!*

Professional Arts Building  
99 Sinclair Ave., Suite 210  
Georgetown  
**(905) 873-6642**

**Concert for Kirkland on Saturday**

**STEPHANIE HOUNSELL**  
Special to The IFP

A scheduled spring performance by the Milton Concert Band (MCB) recently took on a deeper, more meaningful purpose after tragedy struck one of its Georgetown members.

A few hours after the newly-formed MCB's first-ever Christmas concert last December, members received the sad news that the six-year-old son of band member Kelly Kilbride had passed away of a rare metabolic disease.

Wanting to do something in memory of little Kirkland Kilbride, the band decided to dedicate its spring concert to him. The concert—which will serve to remember Kirkland as well as raise funds and awareness for the illness that took him—will take place Saturday, April 12, 8 p.m. at St. Paul's United Church, 123 Main St. E. in Milton.

"Being such a close-knit group, we wanted to show our support to our fellow band member, her family and to the research fund that was named for her son," said MCB's Cheryl Ciccarelli. The upcoming concert will be filled with uplifting music including light spirituals and gospel. The band will perform a medley of songs arranged by conductor Joseph Resendes entitled 'A Message for Kirkland.'

It was believed that Kirkland died of Niemann-Pick Disease Type C, which

prompted problems in the mitochondria of his cells. But recently his parents were told that might not be the case, leaving many unanswered questions. There isn't much research into metabolic diseases.

Kilbride, who plays trombone with the band, said she's touched by the support she's been shown by the group's members, particularly through this concert. In a roundabout way, it was Kirkland who helped her find her way back to the music she'd once loved.

"I told myself I was going to have to do something that would bring happiness into my life so it would make the lonely days more bearable for me once Kirkland was gone," Kilbride recalled. That "something" was to dust off her trombone and start playing again—with MCB.

"I was welcomed with open arms and soon found my place," she said. "Music instantly brought back much joy into my life and the camaraderie was just what I needed as Kirkland's last days approached."

Members of the band supported her wholeheartedly after Kirkland's death.

"I never imagined that that one decision to join the MCB could turn out to be one of the greatest gifts that could be brought about through Kirkland," Kilbride said.

At the upcoming concert's intermission, the band will invite the audience to visit an information booth to learn more

See BAND, pg. 13

**Georgetown**

**Dial a Bottle**

**905-873-4565**

Support local radio at [www.haltonhillsradio.com](http://www.haltonhillsradio.com)

**Children's Clothing Sale!**

**Osh Kosh, Gap, Old Navy, Nike, Tommy Hilfiger, Gymboree, Disney and much much more...**

Gently used spring and summer clothing in infant to youth sizes. Unbelievable quality at awesome prices.

**One Day Only!**

**SUNDAY,  
APRIL 13, 2008  
12 - 3 pm**

**Acton Arena  
415 Queen St. E., Acton**

- Spring Jackets
- Shorts & Capri Pants
- Tops & Shirts
- Sun Dresses
- Swim Suits
- Sun Hats & Sandals
- Dance Wear
- Cool Maternity Wear
- Communion Dresses

...and Lots of Brand New Outfits

**CASH ONLY!**



**Sunshine Kids Wear**  
*Awesome Children's Gently Used Clothing!*

[sunshinekidswear@rogers.com](mailto:sunshinekidswear@rogers.com) 519-836-8522

**Where  
Child  
Abuse  
Hurts Most**



Sometimes the worst scars of child abuse can't be seen. Whether physical or emotional, abuse attacks a child's self-esteem and emotional development, leaving long-term emotional trauma and pain. You can help prevent child abuse by being a nurturing parent or caregiver. By letting children know they are special, competent and loved, you can help them develop positive self-images and happier futures.

If you feel overwhelmed, angry or frustrated as a parent, help is out there for you. Look in your area for support groups and services, or talk to a trusted friend, family member, pastor or doctor about what you can do to protect and support your child. If we all do our part to prevent child abuse, we'll get to the heart of the matter.



*Janice and Mario Recchia of Georgetown are happy to announce the engagement of their daughter Melinda Angela Recchia to Angelo Agro, son of Concetta and Paulo Agro of Hamilton.*