

THE INDEPENDENT



Raiders' drive for second place is going down to the wire

Page 17

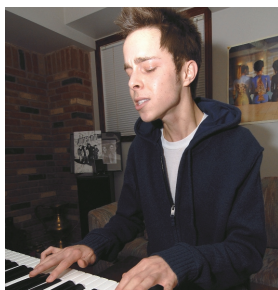
Centennial is a School on the Move

Page 4



50 cents (+GST) Vol. 130 No. 47 Wednesday, February 6, 2008 36 Pages Circulation 21,220 Halton Hills' award-winning newspaper

INSIDE



Internet gives musician's career a big boost

Page 3



GLT unveils Drinking Alone comedy

Page 20

| | |
|---------------|--------|
| Editorial | 6 |
| Michael Chong | 7 |
| Calendar | 10, 14 |
| Sports | 17, 18 |
| Entertainment | 19, 20 |
| Classifieds | 21-23 |

FRIDAY...

A renowned photo-journalist has teamed up with Georgetown's Art-cast Inc. to provide a memorial for fallen soldiers in Afghanistan. See details Friday.

For breaking news go to: www.independentfreepress.com



Easy sliders

Famed groundhog Wiarton Willie may have called for an early start to spring this week, but February is proving to be a dandy month for winter activities. Last week's storm remains made for great tobogganing at Cedarvale Park Saturday, as Steve Swasey and daughter Rachel, 11, found out. Another storm is expected to hit the area today.

Photo by Jon Borgstrom

Where has Fourth Line water gone?

LISA TALLYN
Staff Writer

Several Fourth Line residents who live near Acton Quarry and are experiencing water problems believe the quarry is to blame.

But Dufferin Aggregates, which owns the quarry, and the Ministry of Environment both say the quarry isn't responsible.

Residents had the opportunity to hear that explanation first-hand at a meeting hosted by Dufferin in the Acton Arena recently.

Water was the hot topic of the night. Well water, or the lack of it, is a concern for many of the residents near the quarry who are experiencing lower water levels in their wells or are out of water completely.

Fourth Line resident Steve Lister is just one of about 30 residents on that road with water problems. He said they are calling for an independent study of water in the area to get an accurate picture of what's going on.

Serious water quantity issues at his horse farm began arising in 2005 he said, and became worse in 2007. He believes the quarry is to blame.

Today he has to have water delivered twice a week. The quarry is currently paying that bill, but Lister isn't sure for how long.

Yvette Rhodes, another Fourth Line resident, said they ran out of water in their well in 2005.

She and her husband Steve Hetman had a well driller come in to look at the well and found a large quantity of sediment on the bottom.

By Sept. 2006 they had to install a cistern at a cost of \$10,000, and are currently paying \$120 a month to have water delivered.

See RESIDENTS, pg. 8

Board establishes boundaries for Danby Rd. school

Halton District School Board has set the boundaries for the new school on Danby Rd. to be opened this December.

The school will serve students who live in the area of Georgetown South east of Mountainview Rd. as well as the area south of Argyll Rd., west of Mountainview Rd. to 10

Sideroad.

The boundary review has also recommended students living north of Miller Dr., east of Eighth Line who currently attend George Kennedy and Centennial Schools will be redirected to Silver Creek School.

As a result of the opening of the new

school on Danby Rd. the Halton Board is expecting eight of the current 10 portables at Silver Creek won't be needed.

The boundary changes will result in a population of about 452 students at the new school and 609 students at Silver Creek Public School.

APPLE Auto Glass®

We handle all insurance work.

•Truck Accessories •Upholstery
•Heavy Equipment Glass •Window Tinting

354 Guelph Street, Georgetown
(905) 873-1655

WE WANT TO BE YOUR VALENTINE!

FREE Niagara Falls Getaway with every vehicle purchased or Gas Card Equivalent

See dealer for details.

Georgetown Kia **2 Locations** **Superstore Open Sundays**

1-866-364-0697 **314 Guelph St. (Hwy. 7)** **199 Guelph St. 1-866-367-4081**

MARIA BRITTO

Local: 905-873-9255

★ Top Producer since 1985

www.mariabritto.com

RE/MAX Realty Specialists Inc. Brokerage