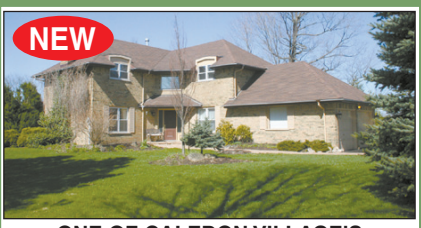




\*Sales Representative  
 Patrick Bogert\* Sandy Ball\* Barb McLeod\*  
[www.BogertBallMcLeod.com](http://www.BogertBallMcLeod.com)



**ONE OF CALEDON VILLAGE'S IDEAL RESIDENTIAL POCKETS!**  
 Custom designed and built home on a totally quiet cul de sac. Beautiful established gardens and backs onto farmer's field. Bright and airy principle rooms. 4+1 bedrooms, family room, Florida room with hot tub. Fabulous family home. Easy to view.



**ERIN - 8 ACRES \$469,000**  
 A cozy, immaculately maintained 3 bedroom bungalow - backed by bush with aged trees and lawns and established perennial borders. Perfect large pond site - a natural setting - wildlife galore. Please call for detail.

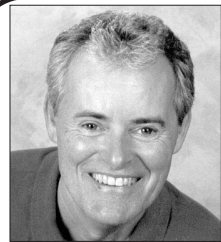


**LANDMARK RESIDENCE CIRCA 1892**  
**\$475,000.** Featured in the Century House tour and known locally as "Hurricane Hill" this beautifully presented Century Brick home is located on a large, private lot in the heart of the Village of Hillsburgh. Featuring well proportioned principal rooms & magnificent original detail throughout this 3 bdrm home is loaded with character & charm.



**GREAT BUNGALOW - WITH SEPARATE APARTMENT**  
**\$349,000.** 3+2 bedrooms & 2 bathrooms make this and ideal family home - great inlaw apartment with separate kitchen & 3 pc bathroom. This home has been well looked after & has a warm, comfortable feel. Updated main bath and fresh paint - just move in & enjoy. Features: huge fenced yard, within walking distance to schools, parks & downtown village stores. Be in time for the Summer fun! Private - backed by woodlands.

1-866-901-0888 **CHESTNUT PARK** Real Estate Limited - Realtor (519) 833-0888  
 HEAD OFFICE: 1300 Yonge Street, Suite #100, Toronto, Ontario, M4T 1X3 Telephone: (416) 925-9191 Email: chestnutparkerin@bellnet.ca



# Wildwood Realty Inc.

Brokerage

**BRUCE ELSMLIE**  
 Broker of Record  
 President\*\*\*

**Why Do Business Anywhere Else!!**

Your House **"SOLD"** in 90 Days  
 Or Bruce Elmslie Buys It!!

Call Today Regarding Our  
**"Guarantee Program" 905-873-8839 Ext. #2**

**Watch For Our Display Ad In The Weekend Paper!!**

## FLYER DISTRIBUTION Did you know . . . ?

# THE INDEPENDENT & FREE PRESS

can distribute your flyer whatever size, in paper for **4.5¢ per copy**

(that's compared to 7.5¢ by post office)  
 By STREET or by POSTAL CODE

Call Sue Spizziri or Nancy Geissler  
 (Circulation Manager)

for more info

**905-873-0301**

# ROYAL CITY REALTY

Realtor Brokerage (HALTON) LIMITED Independent Member Broker

**25 MAIN ST. NORTH, ACTON**  
**BUS. (519) 853-2074**  
**BUS. (905) 450-9344**



**DAMIAN NIKIC**  
 Broker of Record  
 519-853-2074



**MICHAEL PARKER**  
 Sales Rep.  
 519-853-2074



**JOANNE VRANIC**  
 Sales Rep.  
 Res. 519-853-0336

**OPEN HOUSE**  
 SUNDAY, MAY 27 ~ 2-4 P.M.  
 328 Orville Road, Acton



**ACTON BUNGALOW**  
**A "LOT" TO LOOK AT \$269,900**

Well maintained bungalow on mature 60' x 100' ft lot. Quiet street with no sidewalks to shove!! Plenty of parking plus privacy. 3 bdrms, 2 bathrooms, fin. rec rm with gas stove & above grade windows, hrdwd flrs & trim throughout. Oak kit. cabinets & ceramic flrs. Enclosed mud room, separate entrance, lrg laundry rm. Lots of storage. High efficiency furnace, A/C. Call **Michael Parker\***.

**EXCLUSIVE**  
 28 acre of industrial land. \$1.8 M. Hwy. frontage adjacent to railroad tracks. Call **Damian Nikic\*\*\***.  
 RCA-0107-2

**COMMERCIAL/ INDUSTRIAL FOR LEASE**  
 Located in Guelph, close to Home Depot. From 1400 - 7800 sq. ft. From \$4/ft + T.M.I. Call **Damian Nikic\*\*\***.



*Rise Above all the Rest*  
**DRIVE A LITTLE, SAVE A LOT**



**EAST END OF GUELPH SEMIS & SINGLES**  
 park lots, walkout lots, and green space

Singles from **\$249,900**



**SALES OFFICE HOURS:**  
 Mon-Wed: 2 pm-8 pm; Sat and Sun: 12 pm-5 pm  
 31 Starwood Drive  
 Main Phone: (519) 836-5141  
 Call Damian Nikic (Broker of Record)  
 (519) 853-2074 x 101 (905) 450-9344 x 101  
 Royal City Realty (Halton Ltd.)  
 Exclusive Agent

# CARRIERS NEEDED

## GEORGETOWN

- |                 |                   |
|-----------------|-------------------|
| Bradley Drive   | Albert Street     |
| Harding Street  | Durham Street     |
| Arletta Street  | Sargent Road      |
| Donaghedy Cres. | Weber Street      |
| Mary Street     | Mountainview Road |
| Henry Street    | Maple Avenue      |
| Charles Street  |                   |

## ACTON

- |                  |              |
|------------------|--------------|
| Somerville Road  | Bower Street |
| Churchill Rd. N. | Mill Street  |
| Main Street      |              |

*If interested, please call*  
**CIRCULATION**  
**905-873-0301**

