

# YOUR REGIONAL REAL ESTATE PAGE

Discover the **SAVINGS!**  
Total commission as low as:

**1%\***

When we sell your home

\* See our inside ad or call for details.

**OPEN HOUSE**  
SAT. APRIL 14, 2-4 PM  
**147 COOKE CRES**



**\$448,900**

**HOT! EXCEPTIONAL... BETTER THAN BUILDERS MODEL.**  
Beautifully Upgraded. Modified Upgraded Kitchen, 4x0 Stainless St. Appliances, Oversized 135ft<sup>2</sup> Lot, Large Bedrooms, Functional Floor Plan Stunning Hardwood In Lr&Dr&Fam Rooms, 9ft Ceilings, Ground Floor Fireplace Must See. Fully Loaded, Column, Curved Staircase, Largest Lot, Parking For 6 Cars, R/V Cvac, Garage D/O & Remote, Access To Garage From House, Fully Fenced, Laundry On Main, Beautiful Landscaping.



**GOWEST REALTY LTD. BROKERAGE, DIR# 905-330-1888**  
MAREK KLUGA, Sales Rep., & JACK NASARZEWSKI, Broker

**THE PUCK STOPS HERE!**

**VARIABLE PRIME  
-.95%**



<b>5yr Fixed</b>	<b>7yr Fixed</b>	<b>10yr Fixed</b>
<b>4.99%*</b>	<b>5.15%*</b>	<b>5.49%*</b>

\* Rates subject to change at any time without notice. \*\* O.A.C.

Call the "i dream team" for great rates, fast friendly service & stress free mortgages.  
John, Kim, Lisa & Delfina

**MA Mortgage Architects**



**John Cavan, AMP**  
Mortgage Planner

**(905) 878-7213**

14 Martin St., Milton, ON  
Head Office:  
6505 Mississauga Rd.,  
Mississauga, ON

THIS SPRING MARKET IS HOT...FOR A **SPECIAL COMMISSION RATE**  
CALL LOU & CATHY TODAY!



**Lou & Cathy ROMANELLI**  
Sales Representatives

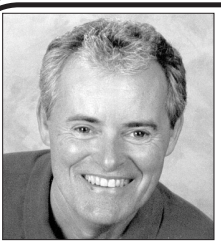
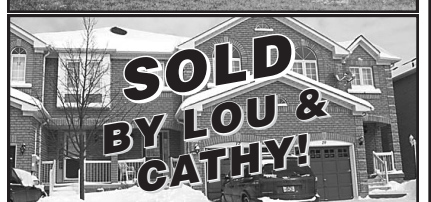
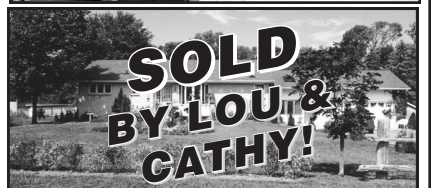
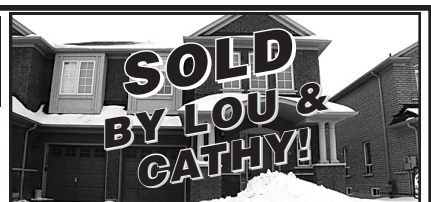
www.lou-cathyromanelli.com



CALL TODAY!

**905-456-1000**

THINKING OF SELLING? IT'S A GREAT TIME TO TAKE ADVANTAGE OF OUR **LOW COMMISSION RATES!**



**BRUCE ELSMLIE**  
Broker of Record  
President\*\*\*

**Wildwood Realty Inc.**  
Brokerage

**Why Do Business Anywhere Else!!**

Your House "SOLD" in 90 Days  
Or Bruce Elmslie Buys It!!

Call Today Regarding Our "Guarantee Program" 905-873-8839 Ext. #2

Watch For Our Display Ad In The Weekend Paper!!

**1-866-901-0888**  
**(519) 833-0888**  
www.chestnutpark.com

Please visit us at our Erin office at **4 Main Street, Erin**

**CHESTNUT PARK**  
Real Estate Limited  
**ANYWHERE YOU WANT TO LIVE™**



**Patrick Bogert & Sandy Ball**  
\*Sales Representatives  
www.BogertandBall.com



**Jeff Sine**  
\*Sales Representative  
www.jeffsine.com



**Barbara McLeod**  
\*Sales Representative



**SPLENDID COUNTRY PROPERTY**

**\$1,995,000.** Original stone farmhouse built in 1837 - one of the earliest homesteads in the area! Beautifully restored/renovated incl. sep. 3 bay coach house w/magnificent 2 bdrm/2 bthrm guest house. Set well back from the road on 71 acres w/2 road frontages - fenced paddocks, barn currently used for Thoroughbreds! **Patrick Bogert\* & Sandy Ball\***



**CUSTOM BUILT HOME - 59 "PRIVATE ACRES"**

**\$1,249,000.** Custom built 5000 sq. ft. residence w/every modern convenience & comfort. Bright open concept living space - astute attention to every detail. House set well back from road - complete peace & privacy. Inground pool, terraced gardens, panoramic views, rolling hills & hundreds of wild apple trees make this a spectacular country property. **Patrick Bogert\* & Sandy Ball\***



**COUNTRY HAVEN FOR PROFESSIONAL MUSICIAN**

**\$895,000.** Custom built 3 bdrm home on 10 acres just mins. from Village of Erin & an easy commute to Toronto! Large principal rooms featuring main floor family room w/shared floor-to-ceiling flpc, solid Maple flrs & custom kitchen o/l inground pool. Professional recording studio on lower level can be used 'as is' or return lower level to extra living space. In addition, oversized dble att. garage, kennels & steel storage shed make this an extraordinary find! **Barb McLeod\***



**CASUAL COUNTRY ELEGANCE**

**\$599,000.** Open, airy design & an abundance of windows allows for plenty of natural light to brighten this family home. Large south facing deck & screened gazebo are an extension of the living room & overlook the pond & grounds. Set well back from road behind tree lined drive for complete privacy on 18 acres. Suit family or couple and just minutes to Village of Erin or Hillsburgh. **Patrick Bogert\* & Sandy Ball\***



**LANDMARK RESIDENCE - CIRCA 1892**

**\$475,000.** Featured in the Century House tour & known locally as "Hurricane Hill" this beautifully presented Century Brick home is located on a large, private lot in the heart of the Village of Hillsburgh. Featuring well proportioned principal rooms & magnificent original detail throughout this 3 bdrm home is loaded with character & charm. Contact **Patrick Bogert\* & Sandy Ball\***



**IDEAL COUNTRY HIDEAWAY IN MONO HILLS**

**\$319,000.** Looking for your own country spot? This is it!! Pristine 2 bedroom home w/wide-plank floors on 4 beautiful private acres. Fronted by huge Maple trees - room for pool, tennis, veggie garden - your choice!! Vine covered pergola, stunning perennial gardens and within minutes of skiing, hiking, golfing, etc. Great for country weekenders or full time living. Near historic hamlet of Sheldon! **Patrick Bogert\* & Sandy Ball\***

**1-866-901-0888**

**CHESTNUT PARK**  
Real Estate Limited - Realtor

**(519) 833-0888**

HEAD OFFICE: 1300 Yonge Street, Suite #100, Toronto, Ontario, M4T 1X3 Telephone: (416) 925-9191 Fax: (416) 925-3935 Email: homes@chestnutpark.com