

Lynn & John Drewry

*Salesperson

**Broker

**HERE IS WHAT OUR CLIENTS ARE SAYING ~
GO TO lynnandjohn.ca**



**STUNNING NEW CUSTOM BUNGALOW
ON 23 SCENIC ROLLING ACRES WITH POND**

JUST LISTED



- Amazing picturesque property 982 ft Frontage X 1023 ft Depth
- Just south of Highway 7 between Acton and Rockwood nr 4th Line
- 23 acres w/Wooded area surrounding natural Pond site behind home
- Perfect for HORSES, 15Ac of open Fields + area for barn & paddocks
- NOTHING has been overlooked, quality workmanship everywhere
- As soon as you enter you will be struck by the long private VIEWS
- 2,770 sf custom built 3 Bedrooms, 3 Bathrooms stone Bungalow
- All rooms except 3rd bedroom overlooks majestic Acreage & Pond
- Striking open concept floor plan + bright WALK-OUT BASEMENT
- 9 ft Ceilings, 8 ft interior Doors, Red Oak Hardwood floors throughout

\$998,000



- Heated Porcelain flooring in three Bathrooms & Laundry room
- Huge Gourmet Kitchen, Brkfst bar, leather stools + 4 SS + 2 Appliances
- Enormous open concept Great Rm & Dining Rm with vaulted ceilings
- Vermont propane Fireplace, b/in oak entertainment cabinets & mantle
- All overlooking 40 ft Deck, Pond and beautiful views of 23 Acres
- Sep Master Bedroom Retreat wing with views & luxury 5 pc Ensuite
- 3 car completely finished garage, insulated Clopay doors and openers
- 6 zone sound system, Hi Eff Propane furnace and air, Ostaco windows
- 1 acre of perimeter sod w/automatic 12 zone in-ground Irrigation system
- Grundfos constant pressure system, 30 gals per min, Taron Registered

**WONDERFUL CUSTOM EXECUTIVE BACKING ONTO
WOODED GREENBELT ON PREMIUM 143' LOT**

JUST LISTED



- Fabulous curb-appeal home over 2,700 sf full of upgrades
- Popular newer area of Georgetown 5 minutes to the 401
- Near Park Area, Shopping and quaint Downtown Georgetown
- Newer open 4 Bedroom, 4 Bathroom on large Premium 143 ft lot
- 3 Full Bathrooms upstairs along with separate Laundry room
- Convenient Walk-Up Basement to backyard + partially dry walled
- Large principal rooms open concept, decorated in warm earth tones
- Beautifully upgraded fixtures, window coverings & dental moulding
- Large bright two-storey Foyer and wide hall with designer ceramics

\$465,000



- Huge upgraded maple Kitchen 6 newer Appliance + long Pantry
- Walk-out to private Deck, mature fenced yard & cute kids playhouse
- All overlooking this large lot and Mature Wooded Greenbelt
- Spacious Family Room with maple hardwood floors and gas Fireplace
- Large combination Living and Dining rooms also with maple hardwood
- Main floor 2 piece bathroom + large mud room, access to full 2-car garage
- Spacious master bedroom, 4 pc ensuite, separate shower, oval tub, w/i closet
- Vinyl windows, High efficiency Furnace and Water Softener, Central Vac
- Long private double concrete driveway, walkway and porch



Direct **(905) 873-0440**
Office **1 (800) 263-3434**

www.lynnandjohn.ca
E-mail: lynn@lynnandjohn.ca

We strive for accuracy but we are not responsible for errors or omissions

Johnson Associates

HALTON LTD., BROKERAGE

JESSIE JACOBS *Sales Rep.

(905) 877-5165



www.jessiesellshalton.com



OPEN HOUSE

Sunday, Jan. 14th ~ 2-4 p.m.
34 Greenore Cres., Acton



**JUST MOVE
IN . . .**



ACROSS FROM PARK

- New windows in most rooms
- New front and rear doors
- New laminate on complete lower level 2005
- Eavestroughing 2006
- Furnace 2002, Garage Door 2003
- Dishwasher 2005
- Gas fireplace on ceramic base
- Whirlpool tub rebuilt 2006
- Roof inspection & vent 2006
- 9 x 9 patio summer of 2005
- Water feature pond with pump 2005
- Air ducts cleaned and antibacterial deodorized 2006
- 4 levels - gorgeous kitchen

LOCATION, LOCATION!! PARK AREA

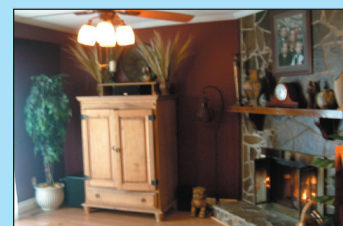


Beautifully upgaded 4 bedroom 2 storey in the much desired park area, just a few outstanding features:

- Roof resingled 2004
- Eavestroughing 2006
- Gorgeous kitchen cabinetry 2003, b/i dishwasher 2004
- Ultra efficiency DC Carrier furnace
- Deck, gazebo & lighting 2006
- 125A circuit breaker panel 2004
- Vinyl/aluminum garage door with programmable opener with photo-sensor for safety & external keypad
- Kreepy Krawler automatic vacuum system 2005 for inground pool
- Complete R-1 finished lower level perfect for casual get togethers and kids
- Too many feature to mention



GORGEOUS UPDATED KITCHEN



WALK TO SHOPPING & ARENA



This is an amazing value for a 4 bedroom home in a newer subdivision.



Excellent family floor plan, laundry room just off master, large family room with fireplace, ensuite off master plus 4 pc for the kids plus 2 pc on main floor for the kids. Fully fenced rear yard, huge front porch. A lot of home for the money.