

ROYAL LEPAGE
 Meadowtowne Realty, Brokerage
 Independently Owned and Operated

**324 Guelph Street
 Georgetown
 905-877-8262
 TOLL FREE: 1-866-865-8262**

**"Apple Branch"
 Brampton West
 905-846-5448**



Helping you is what we do



\$335,000
NEED A BARN & SHOP 2.8 ACRES
 Ideal for him and her. Charming renovated 4 bdrm home. Pole barn with paddock area for horses. Large steel drive shed and workshop for multiple uses. Close to Orangeville and Shelburne.
 Call ...



DENISE DILBEY* *Sales Representative
905-877-8262
Moving Beyond Expectations



\$362,900
HOME, INCOME UNIT, GARAGE AND OFFICE
 1 Acre in town. Includes detached 12 x 24 shed and 20 x 50 workshop. Endless potential and investment on Hwy. 124. Lots of parking and room to play. Mun water, gas and 200 amp hydro service. Call ...

MARC BASKIN* *Sales Representative
905-877-8262



NEW PRICE
FANTASTIC GEORGETOWN SOUTH HOME - \$353,900
 Waiting for you is a home with many upgrades including brand new finished basement with fireplace. Oak flooring, marble floor in guest washroom, lots of fresh paint. Very close to schools & parks. Four bathrooms and roughed in for basement kitchen.
 For a private showing call ...



MARC BASKIN* *Sales Representative
905-877-8262



\$389,000
COUNTRY LIVING AT IT'S BEST ON 2.13 ACRES
 Cozy log home w/wrap around porch & scenic views located on paved rd just min to Acton, Erin, G'town, Rockwood & Guelph. Open concept L/Rm w/cathedral ceiling & porcelain woodburning stove. 3 BR & 2 bath plus loft on upper & main. New main fir bath w/ceramics, main fir laundry. Lower level w/2 BR, 2nd kit, 4 pc. wash. & rec. rm. with w/o - loads of potential. 2 paddocks w/run ins, additional hydro, water & septic hook up. Great hobby farm.



JANICE RUMLEY* *Sales Representative
905-877-8262
Home... A Phone Call Away

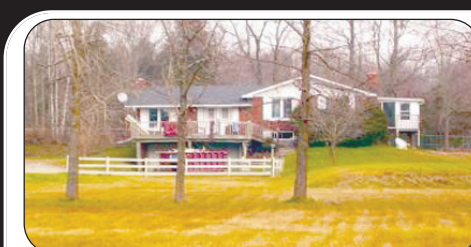
**OPEN HOUSE
 SAT., DEC. 2,
 2-4 P.M.
 8724
 Wellington Rd. 22
 (Call for directions)**



NEW PRICE **\$419,900**
THE ABBEY
 Features four bedrooms with over 2700 square feet living space. Backs onto clear field with no neighbours to the immediate south. Cathedral ceilings and large windows in the Great Room, cherry cabinets and 9' ceiling in kitchen. Formal dining room with decorative columns, hardwood floors, main floor office, laundry and walkout to double garage.



RUTH BOWES* *Sales Representative
905-877-8262
 Direct **905-691-5058**
www.ruthbowes.com for photos
"For Service That Moves You"



DIAMOND IN THE ROUGH - \$324,900
 Rural residential 4 level sidesplit, 3+1 bedrooms, 3 baths, on 3.01 acres. Features: Sunroom with skylights, 3 fireplaces, open-concept kit/fam room overlooking LR/DR and an elevator which stops on all levels.
 Being sold "as is". MLS#X11032489



HEATHER SCOTLAND Broker
LEIGH WHITING Broker
BERNADETTE PRATT Sales Representative



NATURE ABOUNDS - \$659,900
 Rural raised bungalow, 4 bedrooms, 3 baths on 6.94 acres. Features: Finished walkout basement with hot tub, master bedroom with 4 pc ensuite, new oak kitchen and backs onto conservation with hiking trails and streams. MLS#W1023244



HEATHER SCOTLAND Broker
LEIGH WHITING Broker
BERNADETTE PRATT Sales Representative



COUNTRY ACREAGE - \$369,900
 Rural bungalow, 3 BR, 2 baths, on 3.75 acres. Features: Country kitchen with walkout to a covered porch & greenhouse, large living room with fireplace and Master BR with 3 piece ensuite, sauna & walkout to the inground pool. MLS#X1003874



BERNADETTE PRATT Sales Representative

View full feature sheets at www.REresource.ca 905-877-8262

Royal LePage is Canada's leading full service real estate company with over 12,000 sales representatives and 600 offices across Canada.

**1-866-901-0888
 (519) 833-0888
www.chestnutpark.com**

**Please visit us
 at our Erin office at
 4 Main Street, Erin**

CHESTNUT PARK
 Real Estate Limited
**ANYWHERE
 YOU WANT TO LIVE™**

**Patrick Bogert
 & Sandy Ball***
 *Sales Representatives
www.BogertandBall.com

Karen Lay*
 *Sales Representative
www.karenlay.com

Jeff Sine*
 *Sales Representative
www.jeffsine.com

Barbara McLeod*
 *Sales Representative

TOP CALIBRE COUNTRY PROPERTY
\$598,000. Brick farmhouse Circa 1890 - mechanically updated, great architectural detail, elegantly proportioned rooms - perfect family home in great location. Brand new barn, fenced paddocks - ideal for horse operation or hobby farm, 26 acres. **Patrick Bogert* & Sandy Ball*.**

GRAND FAMILY HOME
\$399,000. Custom built 3+1 bdrm family home w/separate 'granny' apartment on 1/2 acre lot. Plenty of room for large or extended family! Many outstanding features; hrdwd flrs, office, workshop, great 'games/family' room w/wet bar, kids playroom & lots of room for outdoor play, too. Easy to show! **Patrick Bogert* & Sandy Ball*.**

TIRED OF DRIVING THE KIDS AROUND?
\$399,000. Great family home in great neighbourhood. Kids can walk to schools, community centre, library, tennis and miles of trails for all kinds of winter family fun; snowmobiling, cross country skiing - all just minutes away. Many recent upgrades incl: freshly painted, updated kit., new bath, new windows, new flooring, walk out to deck & a/g pool for plenty of summer fun! Stroll to village shopping! **Patrick Bogert* & Sandy Ball* Jeff Sine*.**

A PIECE OF HEAVEN IN THE HILLS OF MONO
\$349,000. The original blacksmiths' house - an absolute gem with original charm throughout. Meticulously restored and maintained, just move in! Home nestled amongst 4 rolling acres w/spectacular gardens. A wonderful weekend retreat, close to skiing, hiking golf. **Patrick Bogert* & Sandy Ball*.**

OPEN HOUSE - SATURDAY 2-4 PM

WARM & WELCOMING - 19877 MAIN ST., ALTON
\$312,000. This house smiles...be presently surprised when you enter this home and see all it has to offer! Many recent upgrades including new furnace/AC, some new hardwood, freshly painted & large picture windows - all surrounded by majestic trees! Bring the family - they'll love it! Enjoy village living - mins. to golfing, skiing, hiking, schools, churches & the Millcroft Inn & Spa! **Barb McLeod*.**

FIRST TIME BUYERS TAKE NOTE!
\$219,000. Great family living in Orangeville - adjacent to Everykids' Park & steps to Parkinson school. Renovated kitchen opening to large dining/living area. Move in now! Private, 2 car drive, great curb appeal. Easy to show. **Patrick Bogert* & Sandy Ball*.**

CENTURY STONE HOME CIRCA 1832
FOR LEASE
 Hiding in the Hills of Mono - pretty stone house w/charm throughout - beautifully presented & ready for the Winter season! 3 bdrm, 2 baths, 3 frplcs, & double gar. Located for winter enjoyment; mins. to Mono Cliffs Inn, 10 mins. to Hockley Valley Ski Resort & 20 mins. to Mansfield. \$1,600/month + utilities. **Patrick Bogert* & Sandy Ball*.**