

FEATURE HOMES

OPEN HOUSE
Sun. Nov. 19 2-4PM
1270 Maple Crossing Blvd,
Unit #1504, Burlington



FOR SALE OR LEASE!



MIRELLA MARSHALL
Sales Representative
(905) 878-8101

ROYAL LEPAGE
Meadowtown Realty
Independently Owned & Operated

FANTASTIC VIEW OF THE BAY

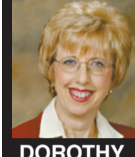
Lovely 2 bedroom 2 bathroom condo in the Palace with an incredible view of the bay. Freshly painted, new carpeting. Kitchen appliances and stackable washer and drier, parking spots and storage unit included. Recreational facilities, party and guest rooms. Minutes from the lake, Maplevue Mall and highway access. Call to view **\$189,000.**

OPEN HOUSE
Sat., Nov. 18
2-4 p.m.
11808 Winston Churchill Blvd.



SPLENDID COUNTRY BUNGALOW

located on 3/4 acre just outside of Georgetown. Quality built & lovingly maintained. Gorgeous new cherry kitchen with granite counters; spacious open concept plan, vaulted ceilings, large windows, tranquil country views in all directions, mature landscaping; two oversize garages plus workshop; 3+1 bedrooms; stone fireplace and wet bar on lower level. Come see for yourself!



DOROTHY MAZEAU
*Sales Rep.
905-857-0651
1-800-748-6789

ROYAL LEPAGE
RCR Realty, Brokerage
Independently Owned & Operated



THE MOST SOUGHT AFTER CONDO IN GEORGETOWN



PETER ZAVITZ
*Sales Rep.
Direct: 416-996-4663

Johnson Associates
HALTON LTD., BROKERAGE

Lovely 1 bedroom + den unit w/gas fireplace, in-suite laundry, 6 appliances, huge balcony facing west. Walking distance to old downtown Georgetown, Parks, Shopping. Building offers warm friendly environment with security and wonderful neighbours.

www.peterzavitz.com

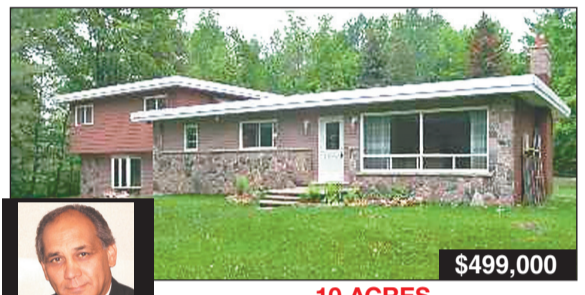
OPEN HOUSE - SAT. & SUN., NOV. 18 & 19, 1-3 P.M.
5958 FIRST LINE, ERIN



TAMMY WOODS
*Sales Rep.
519-941-5151
905-450-3355

ROYAL LEPAGE
RCR Realty, Brokerage
Independently Owned & Operated

\$549,900
Gorgeous 5 bdrm home on 2 acres in great commuters location. Over 3500 sq ft with brand new porcelain tile & hardwood on main level. 2 car garage with entrance to home & sep. entrance to basement. Sunken family room off of large kitchen. 2 jet tubs. Shows fantastic. Wellington Rd 22 & First Line. Follow the signs. About 25 minutes from Georgetown, Guelph & Orangeville. www.orangevilleproperties.com



\$499,000

10 ACRES SIDESPLIT SPECTACULAR!

On 10 Acres in prestigious Erin near Terra Cotta. Enjoy trees and trails, a nature lover's paradise!! Spacious, open home with hardwood floors, huge kitchen for entertaining and much more. Suitable for 2 families/parents/relatives etc. 2 entrances, 2 kitchens. Hardwood bush, 2-storey shed with playhouse. Asking \$499,000.



EUGENE DIGNUM
Sales Representative
(905) 451-2390

EXIT
Realty Hare (Peel)



LAMONT LEONE
*Broker
1-800-828-0531

RE/MAX
Realty Enterprises Inc., Brokerage

BIG, BRIGHT, BEAUTIFUL & BRAND NEW

\$384,500. Fabulous ranch bungalow on 81' wide lot. 3 great bedrooms; lovely kitchen; big living room with cathedral ceiling; 2 full bathrooms plus rough-in bath in basement. Super-size 2 car garage with separate entrance to basement. Fine quality cabinets, ceramics, trim & hardwood floors. Call for your appointment to view. **Lamont Leone, Broker, 905-855-2200.** www.OntarioHouseSales.com

OPEN HOUSE



DATE: Sunday, November 19
TIME: 2-4 p.m.
WHERE: 101 Somerville Road, Acton

4 bedroom, 2 storey "Buttercup" model. Just a tremendous floor plan for the young family. 06-644-90

CUSTOMIZED DAIRY DRIVE BUNGALOW



I can not express the fabulous features that this super bungalow has to offer. Totally upgraded throughout plus a finished basement. Do yourself a favour and come see this house. 10 minutes out of Georgetown to save thousands is reason enough. Yes ... it is worth the drive. 06-368-90

Johnson Associates
HALTON LTD., BROKERAGE

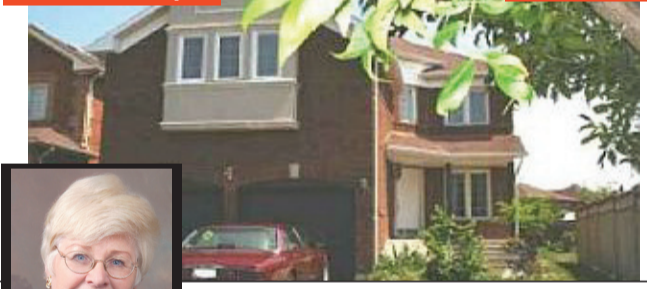
(905) 877-5165

JESSIE JACOBS
*Salesperson



O/H SAT 2-4 pm

\$439,900



Ursula Stuck
Broker
(905) 270-8840

RE/MAX
Professionals Inc., Brokerage

Georgetown South - Hot-Hot-Hot

Great 4 BR-Home, gleaming hardwood floors on main-level, mainfloor laundry, family room with log burning fireplace, large eat-in kitchen with walkout to fenced poolsize yard, formal dining room with coffered ceiling, MBR with extra lrg. walk-in-closet and 5pc. ensuite bath, sep. shower, huge 38'x17' rec-room, extras incl. c/air, c/vac, 5 appl., water softener, etc., 4 walkouts. Immed. poss., must see! **4 HEPBURN CRES**
PROFESSIONAL SERVICE SINCE 1972



Ruth C. Germain
Sales Representative
(905) 877-5165
www.ruthgermain.ca
ruth@ruthgermain.ca

Johnson Associates
HALTON LTD., BROKERAGE

How much would *your* home sell for?

What do *you* need to do **now** to *prepare your home* for sale in the future?

Call Ruth today for **free** consultation!