



Call **EFFIE DIMOU**
For all your Real Estate Needs!
 If you are thinking of Moving,
 Call **EFFIE DIMOU**
 at **905-840-8400**

EFFIE DIMOU Sales Representative



**For results like these,
 you need to call
 Effie Dimou at
 905-840-8400**

**GOOD LUCK BU11 GEORGETOWN
 MUSTANGS on your Soccer
 Tournament this weekend!!
 All the best!**



Johnson Associates
 HALTON LTD., BROKERAGE

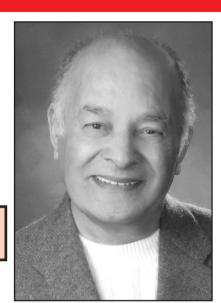


www.Haltonhomesearch.com

905-877-5165

Mary Maan*
 *Sales Rep.

Mississauga 905-874-3040



Tony Maan*
 *Sales Rep.

OPEN HOUSE - SUNDAY, AUGUST 20, 2-4 P.M.
255 Maple Avenue, Georgetown



**OVERLOOKS THE PARK...
 \$349,000**

Right on the edge of the park district overlooking Cedarvale Park. Large character home - main level has a family room with open woodburning fireplace, walkout to the inground pool, 2 offices and a library, large living/dining rm combination with another walkout to the extra large fenced garden with many mature trees. Oak stairs and landing leading to the upper level with 4 fair-sized bdrms; all with hardwood floors. High visibility - ideal for home-based business. Call Mary* or Tony* for viewing.

OPEN HOUSE - SUNDAY, AUGUST 20, 2-4 P.M.
14725 Creditview Rd., Caledon
 Mayfield/Creditview north through the village to property



**VILLAGE OF
 CHELTENHAM \$479,000**

Charming, serene, historic village, 10 minutes to Georgetown and Brampton. Extra large lot with abundance of mature trees, set back, living room with panoramic picture window, extra large country kitchen open to the breakfast area, walkout to the park-like backyard, mature trees galore, one with a tree fort for your kids, 4 good-sized bedrooms, master with hardwood floors, walk-in closet and ensuite. Sprawling home for you and in-laws or Nanny with above ground 2 bedroom apartment with family room with gas fireplace, kitchen, 3 pc washroom and walkout to their own private patio area. All very private. Come for the Open House or call Mary* or Tony* to view. MLS#953299

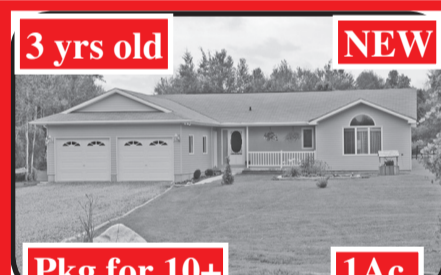


HALL OF FAME
RE/MAX
 Real Centre Inc.
 Town & Country Sales Representative
 (905) 877-5211
 1-800-834-5516
 Directions & Photos
<http://maureen.ca>



NEW
 0.5ac: Unique octagonal design. 3+1 bedrooms, 3+ washrms, 2 kitchens. LR with FP. Huge rec rm. Fam rm with wood stove. Recent windows, CAC & metal roof. In ground, heated, cement pool (20' x 40'), fenced & landscaped. Parking for 12 vehicles. In-law potential. NE corner 7.

In-ground Pool 20'x40'
 Halton Hills: 13425 Fourth Line



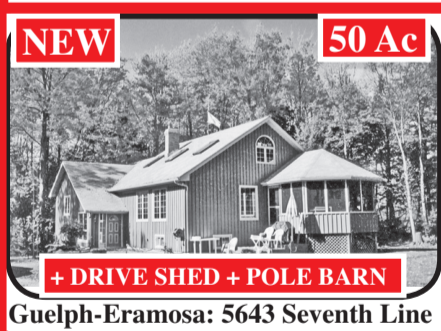
Pkg for 10+ **1Ac**
 Erin: 5394 Eighth Line

2003 Guildcrest Home
 ~ 1650 sq ft. Paved rd. Nat gas & mun water! Tertiary septic! Open concept. MF laundry. Work shop/4th bdrm. Owned HWT & WSft. CAC & CVAC. 200 amp. Rogers cable & hi-speed Sympatico, available. Near Erin. 15 min to G'town & GO.



Banquet Hall/DR/Coffee Shop
 1 Ac
 Extra Land for Expansion
 Frontage on 2 roads
 Meaford: 365 Sykes Street (Hwy 26)

Fine dining 35 km West of Collingwood. Walk to Georgian Bay. Prominent location on Hwy 26. Turn key operation. Banquet Hall seats 100; DR seats 120; Coffee Shop seats 33. ~5000 sq ft on 1 ac of prime commercial land. Excellent condition. Well designed kitchen & work area. Municipal water, natural gas & sewers! Large paved pkg lot. \$725K



NEW **50 Ac**
 + DRIVE SHED + POLE BARN
 Guelph-Eramosa: 5643 Seventh Line

This is it! Character home on park/camp-like 50 acres North of Rockwood on paved rd 3+1 bdrm, 2 washrms. Open concept, Great rm with cathedral ceiling & skylights. Geo Thermal furnace. Drive shed (~44'x30') with guest apt. Pole barn. Pond, trees, stream!!!



5.25 Ac
GARAGES FOR 7 CARS!
 North of Rockwood: + Shop & Barn

Fab 5.25ac estate w over 4000 sqft of living space. Barn (40' x 24') w 3 oak horse stalls. Out building (2,700sq ft w heat & CAC) divided into: games rm (756 sq ft); shop (1270 sq ft) w 2 offices & 2pc & utility gar (675 sq ft), all in excel condition. Loc on private parcel w stream & 2 ponds. Just N of Oustic & 5 min E of Fergus. ~35 min to Georgetown & GO.



LITE industrial M1
 ~1 Ac
 BRING YOUR TRUCK HOME!
 Rockwood: on Hwy 7: Home + Shop

Zoned Rural Industrial Large, 5+1 bdrm, 3 wash-room home on ~1 acre, W of Acton. New windows, doors, eaves/soffits, deck, attic insulation, natural gas furnace, 200 amp, CVAC & survey. LR with wood burning FP. Large kitchen. Fam rm with w/o to deck, door to laundry room/3 pc & gar. Shop (~35' x 17'). Ground prepared for new 4000 sq ft shop. \$499,000



Post Office
Commercial
 Hornby: 12993 Steeles Ave. H.Hills

Zoned C1. Trafalgar & 401. General Store, 2 bdrm apartment upstairs, post office & used car sales lot. Zoned Commercial with Secondary Residential & Institutional uses. "As is". Offers conditional upon the Post Office remaining will be entertained.



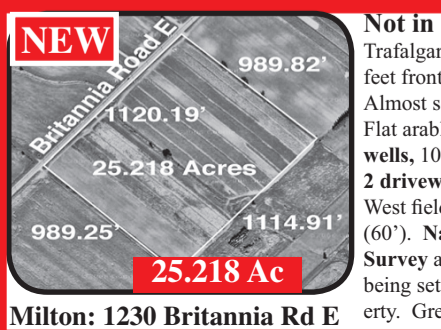
Outside Storage **M2**
 1.77Ac
 Brampton: 2400 North Park Drive

"Hasmat Building" (explosion proof) on corner lot, 213 ft x 283 ft. Zoned M2. 1.77ac, with fenced outside storage. Approx 8000 sqft: 6000sq ft industrial & 2000sq ft office. Large lunch rm. Near Airport Rd & Hwy 407. Across the road from Crysler.



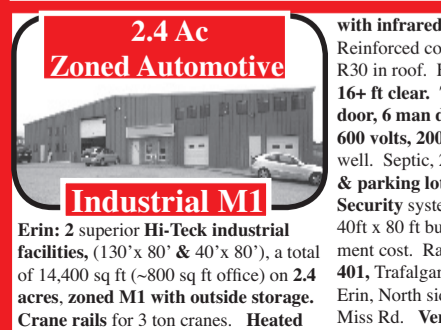
NEW
 Open House: Sun 20 Aug. 3-5 pm
 Halton Hills: 8413 Eight Line

S of Georgetown: Just N of Steeles, 401, 407 & Miss. Mature treed lot, 125ft x 292ft. All brick bungalow. 3 bdrms, 2 WRs. Double garage. Renovated eat-in kit. Oak cabinets. DR & LR with walk out to deck overlooking a mature forest. Excellent location.



NEW
 25.218 Ac
 Milton: 1230 Britannia Rd E

Not in Greenbelt! East of Trafalgar Rd, South side. 1120 feet frontage on Britannia Road. Almost square 25.218 acres. Flat arable land. 2 new drilled wells, 10 gal/min & 3 gal/min. 2 driveway entrances, one on West field (30'), one on East field (60'). Natural gas at the road. Survey available. Golf course being set up to West of this property. Great investment property.



2.4 Ac
Zoned Automotive
Industrial M1
 Erin: 2 superior Hi-Tek industrial facilities, (130' x 80' & 40' x 80'), a total of 14,400 sq ft (~800 sq ft office) on 2.4 acres, zoned M1 with outside storage. Crane rails for 3 ton cranes. Heated

with infrared natural gas radiant heat. Reinforced concrete floors. R20 in walls, R30 in roof. Fans. Mercury vapor lights. 16+ ft clear. 7 drive-in doors, 1 pick-up door, 6 man doors. 3 washrms. Lunch rm. 600 volts, 200 amperes, 3 phase. Drilled well. Septic, 2002. Paved driveway & parking lot. Fully fenced. 2 gates. Security system. Extra insulation in the 40ft x 80ft building. Far below replacement cost. Rare zoning at this price. Hwy 401, Trafalgar Rd North, East on 17th SR, Erin, North side. Approx 30 min to 401 at Miss Rd. Vendor take back mortgage.