

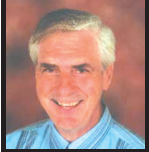
YOUR REGIONAL REAL ESTATE PAGE

OPEN HOUSE
SAT. AUG 19 &
SUN. AUG. 20
1-4 P.M.
161 Elmore Dr.,
Acton



LARGE 2 STOREY HOME

with a stunning 40 x 20 inground pool in the backyard! Private, fenced yard. Newer carpeting on the main level with 4 bedrooms and a 4 pce bath on the upper level. The furnace and roof have both been updated. A good family home in a desired location. \$315,000. **Your Host: Ron Weatherhead**



RON WEATHERHEAD
*Sales Rep.
519-787-5470



**3.25%
VARIABLE**

Looking for a New Nest?



John Cavan AMP
Mortgage Consultant



Key Mortgage
Partners

878-7213

251 Main St. E., Suite 201, Milton
Head Office: 16 George St. N., Brampton

| | | |
|------------------|------------------|-------------------|
| 5yr Fixed | 7yr Fixed | 10yr Fixed |
| 5.40%* | 5.50%* | 5.70%* |

* Rates subject to change at any time without notice.

Call the "i dream team" for great rates, fast friendly service & stress free mortgages.

John, Kim, Debbie & Lisa

\$749,000



NORINNE KILGOUR*
*Sales Rep.
(905) 877-5211



CENTURY HOME ON 100 ACRES

This is a great property with woods, ponds and slightly rolling fields. Maple tree lined driveway leads to a 4 bedroom home with spacious rooms. The out-buildings include 6 stall horse barn, bank barn and 2 drive sheds. Call **Norinne*** for an inspection of this farm.

91 Acres Fertile Farm Land \$399,000 ! Perfect for Dream Home or Farm Operation

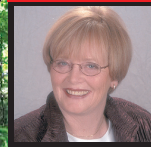
\$339,900



CHARMING CENTURY HOME

Built in 1875, this 4 bedroom brick home has large principal rooms, original trim, wide baseboards and wood floors. Located in a quiet hamlet on 1.3 acres with many mature trees. It is truly unique. Call **Norinne Kilgour*** 905-877-5211. 168-06

NEW PRICE \$599,900



SUSAN RECOSKIE
*Sales Rep.



JACK MURPHY
*Sales Rep.
905-878-8101



**ONE OF THE LAST OF
A VANISHING OPPORTUNITY**

...to own a 92 tract of vacant rolling land with meadows, fields, stream and bush. Hydro and phone lines installed, and 40 x 60 ft steel workshop. Minutes from the 401 at Guelph Line. Perfect site for your dream home. Development credits available. **Priced at \$599,900.00** Contact **Jack Murphy** or **Susan Recoskie** at 905-878-8101 for more info.

OPEN HOUSE
Sat. & Sun.
2-4 pm



JIM LEWIS
*Sales Rep.
(905) 877-5165



\$439,000

29 ERINLEA CRES., ERIN

Nestled in Erin, this large, 4 bdrm, 2 storey home, in a family neighbourhood offers the very best of everything. A large pie-shaped lot backing onto open space provides a setting of natural beauty yet is walking distance to both primary and secondary schools. Tastefully decorated, this is the perfect family home. For detailed information, call toll free anytime, 1-866-234-3310 and enter ID#9029 for a recorded message, visit my website (www.jim-lewis.ca) for more pictures. Or, better yet, call me for your personal tour.



\$499,500

COMPLETELY & PROFESSIONALLY RENOVATED

2.8 acres of rolling land with natural pond. Swimming pool, trees, landscaping in private setting. 4 bdrm, 3 bath, huge din/liv area with hardwood floor. Bright & spacious, 2 FPs, new windows & sliding doors. This home shows 10+-. **Jim Lewis** 905-877-5211. 234-06



\$519,500

STUNNING DEPARTURE FROM THE ORDINARY

4 bdrm home on 6 acres. Easy access to anywhere in the GTA. For more info and pictures visit my website at www.jim-lewis.ca for **Jim Lewis*** 905-877-5211. 192-06



UPSCALE SEMI IN BRISTOL PARK

Featuring Open Concept Designer Kitchen Adjoining Dining Area And Great Room With Gas Fireplace. Walk-Out To Fenced Backyard. Upper Level Features 3 Generous Bedrooms, Large Master Ensuite, Corner Soaker Tub, Sep Shower, Large Walk-In Closet. Upper Level Laundry, Lower Level Features Finished Rec Room With Heated Ceramic Floors And Surround Sound Wiring, 1 Mb Home Director Wiring, Popular Turret Design With Covered Porch. Close To Schools, Transit & Park. Incl: Fridge, Stove, B/I Dishwasher, Washer & Dryer **\$309,900**



READY TO MOVE IN !!!

Sunflower model approx. 2,400 sq.ft. All brick home dbl door entry, dbl garage, open ceiling in foyer & 9' ceilings. Large eat-in kit w/walkout, family room w/fire place, combined LR/DR w/coffered ceilings, utility rm w/wide entry from garage, 4 generous bdrms, master ensuite w/soaker tub & sep shower, inviting frt. porch & paved drive. Call Sam. All of this for **\$429,900**.



REMARKABLE RANCH BUNGALOW

In exclusive neighbourhood on half acre property. Featuring 4 generous bdrms & master ensuite. Main floor family rm with fireplace, large country kitchen with built-in appliances, separate living & dining rm, great rm with sep. kitchen, main fr laundry. Lower level features rec rm, 3 bedrooms, 2 pc bath, storage rm, office. Detached heated 2 car garage, large private deck overlooking wooded hillside. **\$519,900**.



IMPRESSIVE POWELL MODEL

In desirable Hawthorne Village featuring open concept with 9' ceilings, ceramic floors throughout main level, living/dining combo, large family room, open kitchen with breakfast area and walkout to private backyard, 3 generous bedrooms with master ensuite and walk in closet. Two car parking and close to park. Shows a 10 plus and a pleasure to view! Call Sam. **\$349,900**.



DESIRABLE OLDE MILTON

Fantastic brick semi detached home in historic downtown area on deep lot with private back yard. Features include large principal rooms, gas fr, large country eat in kitchen with sky light and w/o to deck and patio, 3 generous bedrooms 4pc main bath with Jacuzzi tub and separate shower. Close to parks, schools and shops. Call Paul. **\$265,000**.



SPACIOUS FIVE LEVEL SIDESPLIT

Located in quiet, sought after location. Featuring bright eat-in kitchen overlooking family room with fireplace and walkout to large sun room. Large living/dining room. 3 spacious bedrooms with master ensuite & walk-in closet. Large lower level rec room & bedroom/office. Private fenced backyard, 2 car garage & double driveway. Call Paul. **\$369,900**.



Jack VanderBreggen
Sales Representative
905-878-8101
VIRTUAL TOURS
www.jackvan.com



Meadowtowne Realty
Adrienne Mills, Michelle Penman, Sam Levin



GABRIELE BAJIN*



PAUL JACKSON*



SAM LEVIN*

