



Silvercreek Olympic salute

The Silvercreek District Girl Guides, which includes Pathfinders, Guides, Brownies and Sparks, celebrated their annual Winterfest, with a Salute to the Olympics. Each group of girls paraded their country's banners and participated in Olympic winter events. The events were: luge (skateboards), javelin (straws), snowman building (plastic bags), castle building, hockey, slalom skiing, figure skating and snowball throwing. Above, Simone Faloon (under the mop wig), Alexandra Arsenault (left front) and Taylor and Mackenzie Davis try their hand at snowman building. Of course, medals were presented to all the 'athletes'. Organizers of this event included Diane Crawford, Cheryl McFadden and Marie Brown as well Guide leaders, parents and Trefoil guiders who helped make the day fun for everyone! For more information about area Girl Guides visit www.whiteoaks-girlguides.ca or www.girlguides.ca

Recycled Reading Book Exchange
 "Previously Enjoyed Books"

Visit Scrapbook Paradise right here in our store!

50% OFF KIDS BOOKS

905-878-6024
 150 Mill St., Milton, ON

TEST US DURING WINTER'S EXTREMES - NOW THROUGH MARCH 4TH ONLY!

Take the Honda Truck Test Drive Challenge

There's no conditions like snow conditions to put Ridgeline, Pilot, CR-V or Element to the test.

CR-V 4WD
 CR-V SE model RD075EX shown
 Uphill, downhill or across country CR-V can handle whatever winter throws at you.
FOR A LIMITED TIME ONLY! \$1,000 GAS CARD ON CR-V EX AND EX-L
 Starting from \$23,007

RIDGELINE 4WD
 As the Motor Trend 2006 Truck of the Year, this heavy-duty full-truck is more than capable to muscle through the winter months.
 Starting from \$35,207
 Ridgeline EX-L model YK165EN shown

PILOT 4WD
 Tackle tough winter driving with the quadra-pro 5 to rise help of Canada's most fuel-efficient 8-seater.
 Starting from \$33,407
 Pilot EX model YF134E shown

Honda Truck Test Drive Challenge offers on Ridgeline, Pilot, CR-V and Element end March 4, 2006

<p>Take the Honda Truck Test Drive Challenge and get a</p> <p>21-PIECE WINTER GLOVE BOX KIT*</p>	<p>Buy or Lease a 2006 Truck & have a chance to</p> <p>WIN A HONDA ATV!</p> <p>TRUCK PURCHASE VALUE \$10K</p>	<p>Buy or Lease a 2006 Truck & have a chance to</p> <p>WIN A HONDA ATV!</p> <p>TRUCK PURCHASE VALUE \$10K</p>	<p>PURCHASE FINANCING</p> <p>As low as</p> <p>3.9%*</p> <p>EXcludes GST</p>
---	--	--	---

Honda's commitment to "Safety for Everyone" provides outstanding occupant protection.

Ontario Honda Dealers
THE SMARTER WAY TO BUY.

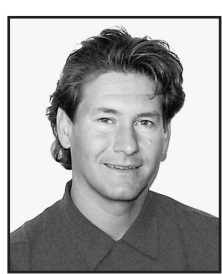
VISIT AND LOCATE YOUR NEAREST DEALER AT:
www.hondaontario.com

Lease and finance offers are from Honda Canada Finance Inc., on approved credit. *3.9% purchase financing is available on 2006 CR-Vs, Pilots, Elements and Ridgelines for up to 36 months. Finance example: \$20,000.00 at 3.9% per annum equals \$884.59 per month based on a 36-month term. C.O.B. is \$1,225.24 for a total of \$31,225.24. Dealer may sell for less. \$11,000.00 gas card offer available on 2006 CR-V EX and EX-L models. \$1000 prize to be won consisting of the value of a new Honda TRX500FG Canadian Trail Edition ATV retail value \$9,999.00. No purchase is required to enter. Selected entrant is required to correctly answer a time-limited math/mental skill-testing question before being declared the winner. Contest duration is February 17, 2006 through the end of business March 4, 2006 only. Full contest rules available at participating Dealers. *Honda offers valid through March 4th, 2006 at participating dealers only. See participating dealer for full details. Offers subject to change by manufacturer at any time. May not be combined with any other promotion. MSRP does not include freight and P.D.E. (\$1,465.00) or taxes. *Visit sales.ca.gov for details. (See Dealer for 2006 EnergyGuide or visit vehicles.gov.ca)

Before you
INVEST,
 talk to a
GOOD NEIGHBOUR.



Lora Greene
 211 Guelph Street
 Georgetown
 905-873-1615



Philip M Karda
 174 Guelph Street
 Georgetown
 905-873-1833



Mike Francis
 123 Main Street South
 Georgetown
 905-877-9652

For Mutual Funds, see one of us today.

LIKE A GOOD NEIGHBOUR, STATE FARM IS THERE.[®]
 Providing Insurance and Financial Services

State Farm Investor Services (Canada) Co. is a separate legal entity from State Farm Mutual Automobile Insurance Company, or any of its insurance affiliates. Mutual Funds are not insurance products.