



## NEWS

Police chief Ean Algar to step down next year  
Page 3

## SPORTS

Lapointe named to national amateur golf team  
Page 18



## GIFT GUIDE

8-page special section inside



**GEORGETOWN KIA**  
314 Guelph St, Georgetown On  
(905) 877-7818  
WE SERVICE ALL MAKES AND MODELS

# The Independent

Wednesday, November 30, 2005

44 Pages Vol. 128 No. 37

**REFINANCING? PURCHASING?**  
**.001%**  
Variable Rate Mortgage  
**BOB WOODS**  
Mortgage Specialist  
**ASSURED MORTGAGE SERVICES**  
(905) 877-5211  
300 Guelph St., Georgetown  
\*Rate subject to change

50 cents (+ GST)

Serving Georgetown, Acton and the surrounding areas

21,220 copies

## Election 2005

# Candidates brace for chilly campaign

And they're off! Campaigns began yesterday (Tuesday) for local federal candidates in the Wellington-Halton Hills riding. Election day is Monday, January 23.

"It's time for a change," declared current federal MP Michael Chong, the Conservative Party of Canada (Tory) candidate yesterday. "It's time for a new government in Ottawa to restore some integrity and accountability and that's what this election is about."

Chong began his drive back to the riding at 5 a.m. yesterday after a crucial non-confidence vote in Ottawa Monday night. He arrived around noon for the Georgetown Seniors' Centre's annual tree trimming party. His appearance had been planned weeks ago.

Chong, who now calls himself Michael to avoid confusion with another Mike Chong, plans to run the same campaign as in June 2005 when he won a first-time victory over Liberal Bruce Hood by 2,300 votes.

"We'll run it as if we're one vote behind and we won't be paying attention to the polls," said Chong.

Newly formed in 2004, Wellington-Halton Hills riding has a population of 100,555 people with 75,160 registered voters. It includes Halton Hills and southern portions of Wellington County: Erin, Eramosa, Centre Wellington and Puslinch.

See FOUR, pg. 3



## Fog leads to two accidents

The heavy fog Monday morning made for treacherous driving in the area and played a role in a two-car crash (above) at Hwy. 7 and Trafalgar Rd. S. Halton Police report at approximately 9:50 a.m. the driver of a southbound Buick SUV went through a red light and struck a Sunfire turning left off Trafalgar Rd. Halton Hills firefighters had to extricate the driver of the Sunfire, a 21-year-old Georgetown woman, who was taken to Georgetown Hospital with non-life threatening injuries. The driver of the Buick, a 62-year-old Erin woman wasn't injured and was charged with failing to stop for a red light. The driver of a flatbed tow truck (below) escaped major injury Monday morning when the truck he was driving northbound on Trafalgar Rd. left the roadway, went into the ditch and rolled.

Photos by Ted Brown

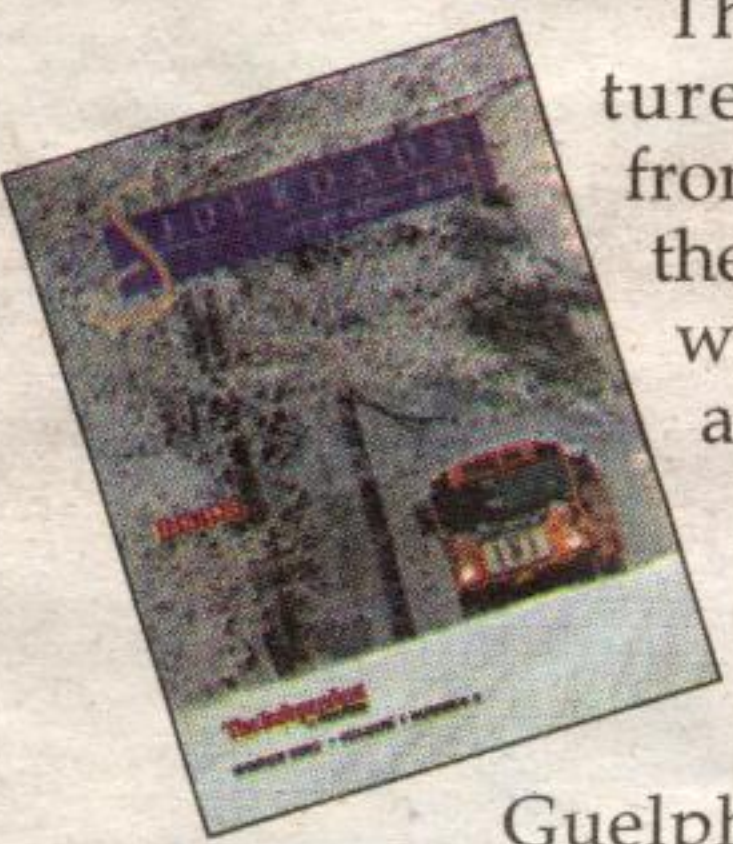
## Check out Sideroads

Independent & Free Press readers will find the winter edition of *Sideroads of Halton Hills* inside today's newspaper.

The 80-page magazine features a wide range of stories from decorating your home for the holidays to backyard bird-watching to skating programs available in Halton Hills.

Let us know what you think by writing to us at *Sideroads* c/o *The Independent & Free Press*, 280

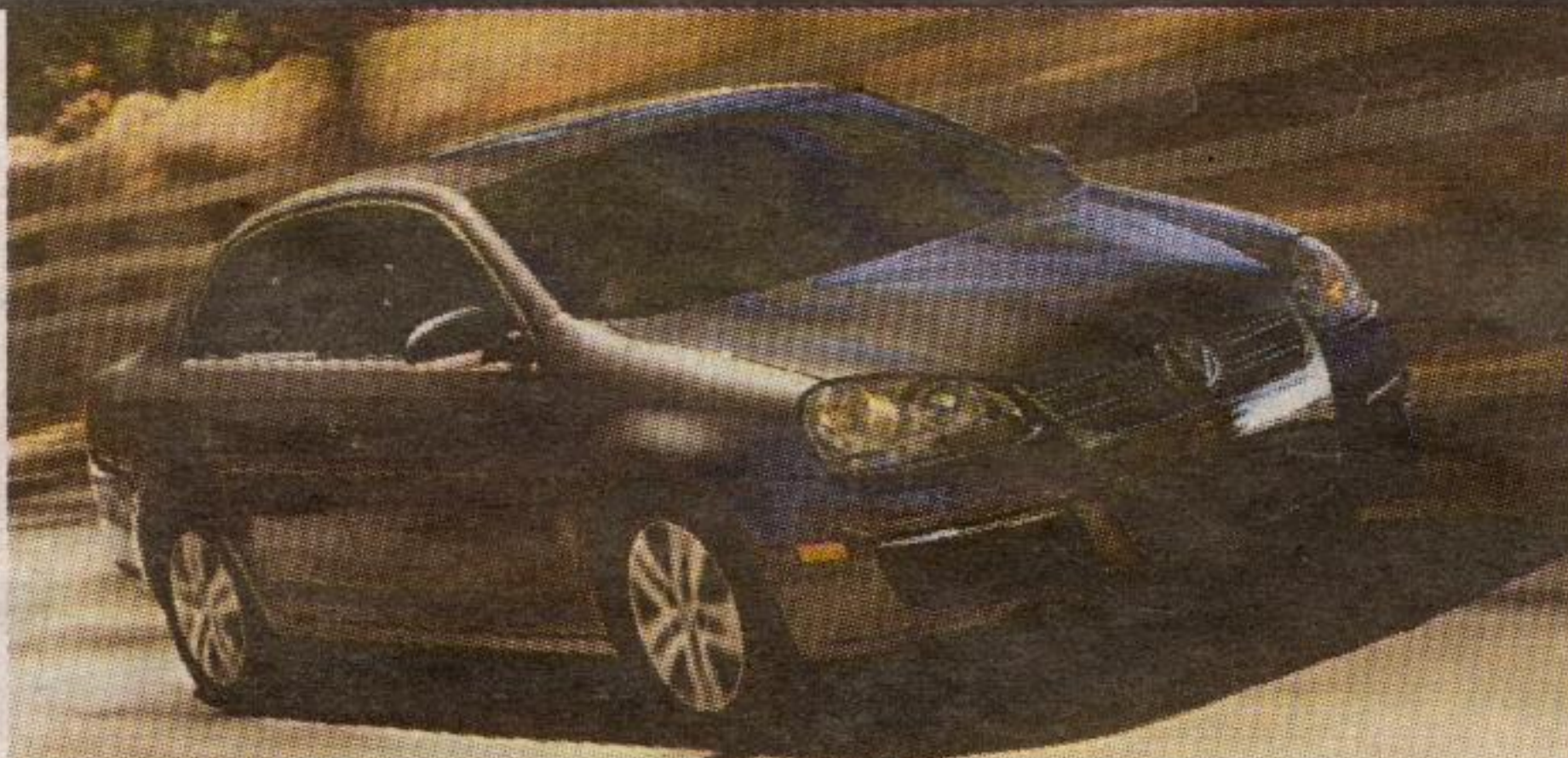
Guelph St., Unit 29 Georgetown, Ont. L7G 4B1.



## The remarkable 2006 Jetta.

- a powerful 2.5-litre engine with 170 lb-ft of torque
- optional 6-speed Tiptronic® automatic transmission
- new electromechanical-enhanced steering
- 4-link fully independent rear suspension
- more passenger room and 20% more storage space
- best side-impact crash-performance score ever given to a car in its class\*
- Refined styling and luxury interior
- more passenger room and 20% more storage space

**\$269/mo.†**  
**4.3% APR**  
\$0 security deposit  
\$0 first monthly payment‡  
48 month lease



## Georgetown Volkswagen

203 Guelph Street  
905.877.5285  
georgetownvw.com

Drivers wanted.

\*IIHS rating as of April 2005. Crash-performance based on U.S. equipped vehicle. Some features may be optional. †Offer applies to a 48-month lease for a 2006 Jetta, 2.5-litre gas engine, 5-speed manual and includes freight, \$3,160 down payment, no first monthly payment (up to \$500 - no cash value) and no security deposit required at time of transaction. PDI, insurance, licence, administration/registration fees, PPSA and applicable taxes extra. Monthly payments total \$12,643. At lease end, lessee responsible for \$0.12/km over 80,000 km, and damage and excessive wear. Requires Volkswagen Finance approval and dealer participation. See dealer for full details. Offer ends November 30, 2005. Supplies are limited. Tiptronic is a registered trademark of Dr. Ing.h.c.F. Porsche AG.