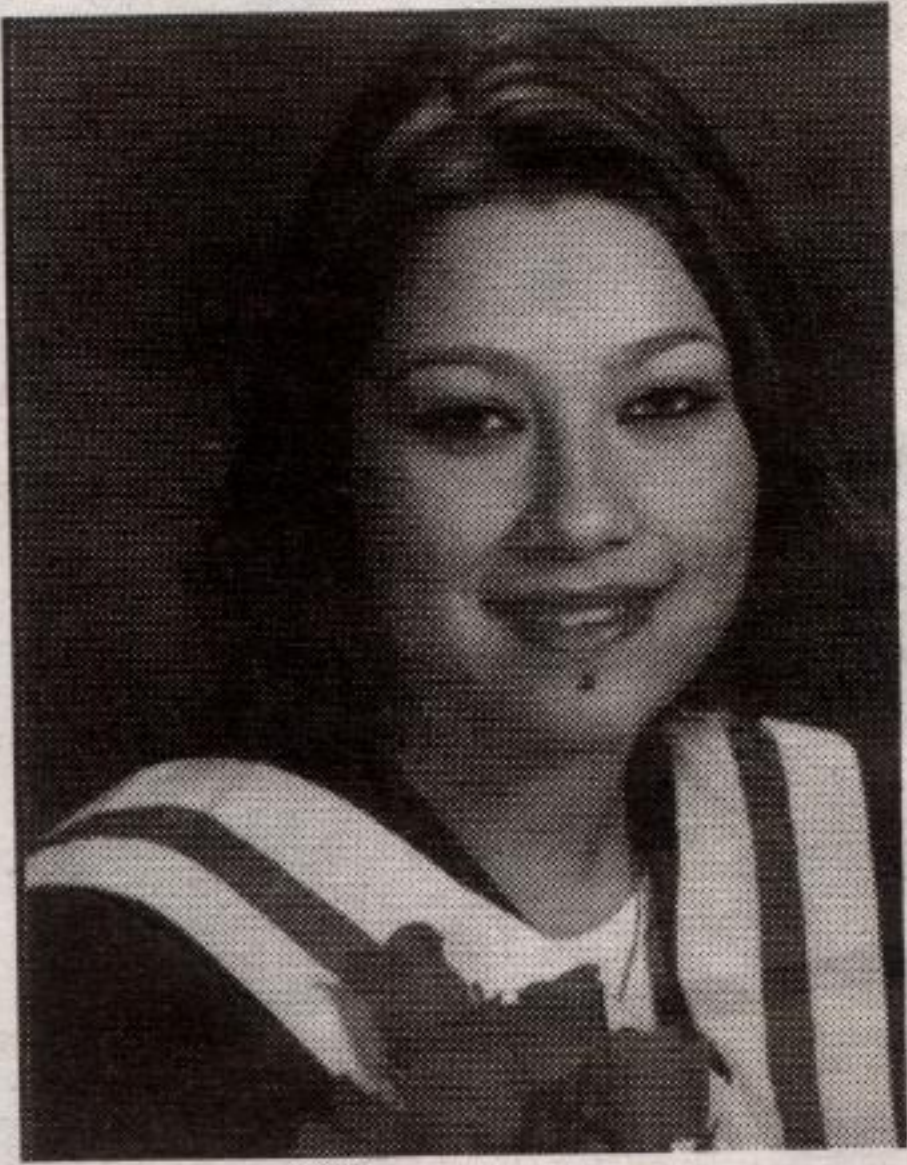


Police 'strongly' support idea of centralized region campus

Congratulations Sera



Love Mom, Dad and Ashley

Continued from pg. 3

Algar, would save officers from duties scattered all over the region and consolidate activities to one location.

"There are so many opportunities of advantage to us," said Algar. "We strongly support this."

Marshall, who has been meeting closely with the Province on this issue, told the board that Queen's Park is intrigued by the idea.

"The province has never seen an initiative like this," he said, adding that with the courts in place, not only the four partners and Halton residents will benefit, but also other

Ontarians. "This is an initiative that can benefit everyone and threaten no one."

Marshall said the true savings from a centralized court would be calculated as the plan moves into its next phases.

Lougheed's only concern about the overall plan is parking and she said she preferred a multi-level structure to a huge lot.

"I'm not in favour of paving acres and acres," said Lougheed, who is also big on integrating as many environmental efficiencies as possible into the campus' design.

Watson explained that further

impacts of HRPS could include relocation of the Halton Safety Village and the possible delay of police headquarters expansion if it can't be integrated into the campus' initial phase.

The next steps in the process include:

- Developing a memorandum of understanding between the four partners that would specify financial commitments, ownership and operating protocols.

- Seeking clarification from the provincial and federal governments as to their involvement in the project and funding commitments.

- Obtaining a decision on whether to proceed by next spring.

If the campus is built, construction is expected to be completed in 2009.

—By Howard Mozel, special

KIA THE FASTEST GROWING AUTOMAKER IN THE WORLD

GET MORE THAN EVER. THE 2006 LINEUP IS HERE.

GET MORE EVENT



2006 Rio and Rio5 Best-in-class power, room and fun!

WE SERVICE AND ACCESSORIZE ALL MAKES AND MODELS

2006 Rio LEASE FROM \$159 PER MO./60 MOS \$0 SECURITY DEPOSIT

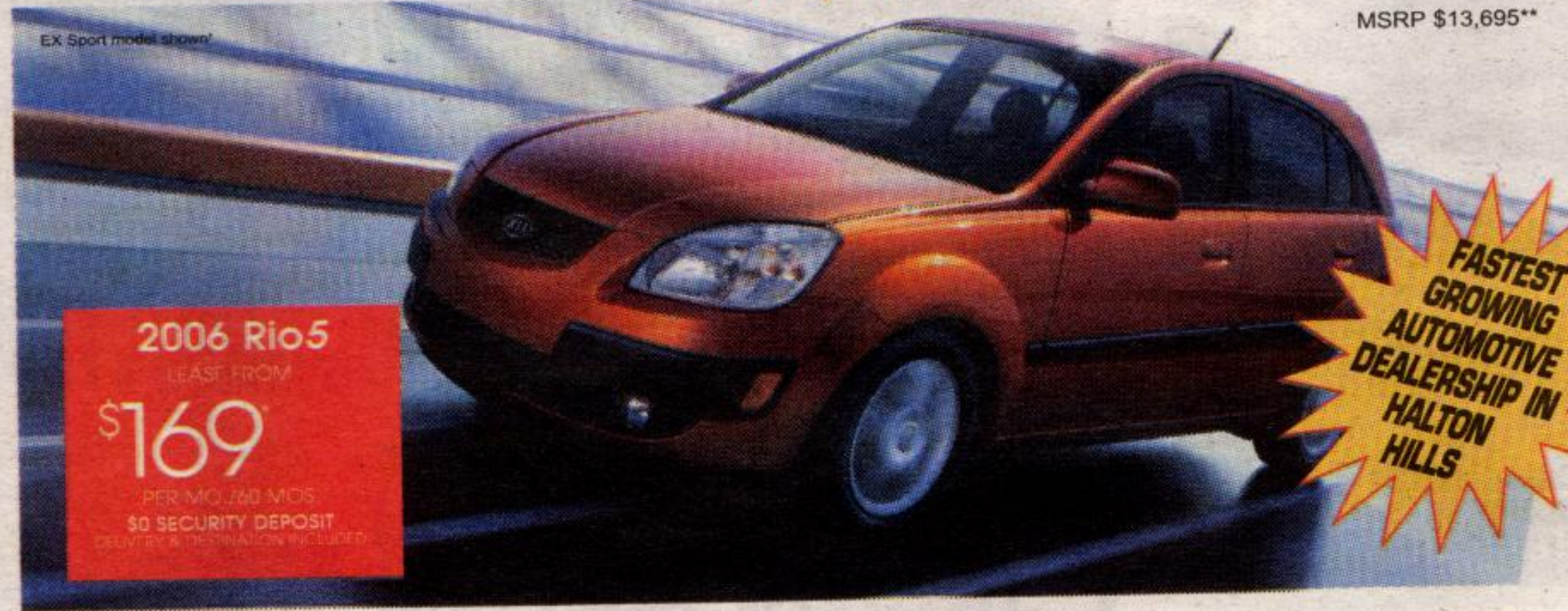
50 mpg highway fuel consumption

All packed with standard features including:

- Class-leading 110 hp advanced fuel-efficient CVT engine
- More space than any vehicle in its class
- Dual airbags
- 4-speaker CD stereo with MP3 player
- Total Care Ownership Coverage

Looking for more? Upgrade to the Convenience package:

- Air conditioning
- Keyless entry
- Front heated seats
- Power windows & locks
- Heated power mirrors



2006 Rio5 LEASE FROM \$169 PER MO./60 MOS \$0 SECURITY DEPOSIT

FASTEST GROWING AUTOMOTIVE DEALERSHIP IN HALTON HILLS

LEASE FROM \$179 PER MO./60 MOS \$0 SECURITY DEPOSIT



2006 SPECTRA

- 2.0 L DOHC CVT engine
- 15" wheels
- Driver's seat height adjuster
- AM/FM/CD/MP3 stereo
- 6 speakers

- Anti-theft ignition immobilizer
- Tilt steering
- And much more



2006 SPORTAGE

- 16" alloy wheels
- 4-wheel anti-lock brakes (ABS)
- 6 airbags
- Electronic Stability Program (ESP)
- Traction Control System (TCS)

- Cruise control
- Power windows, locks & mirrors
- And much more

LEASE FROM \$219 PER MO./60 MOS \$0 SECURITY DEPOSIT

DON'T PAY FOR 6 MONTHS* PLUS GET LOW PURCHASE FINANCING

ON ALL 2005 KIA VEHICLES

LEASE FROM \$279 PER MO./60 MOS \$0 SECURITY DEPOSIT



2005 SORENTO SUV

- 3.5 L V6 engine
- 4WD
- Front & side curtain airbags
- 4-wheel ABS

- 8-speaker CD stereo
- And much more

FOR A LIMITED TIME ONLY GET \$500 FREE GAS when you purchase a new 2005 Sorento



2005 SEDONA

- 3.5 L V6 engine
- 5-speed automatic
- 2nd row captain's seats
- 4-wheel ABS

- Dual zone climate control
- Rear sonar parking aid

\$20,995 CASH PURCHASE SAVINGS OF \$6,000*

5-5-5 Total Care Coverage

TOTAL CARE OWNERSHIP COVERAGE

• 5-YEAR/100,000 KM WORRY-FREE COMPREHENSIVE WARRANTY*

• 5-YEAR/100,000 KM POWERTRAIN WARRANTY

• 5-YEAR/100,000 KM EXTRA CARE ROADSIDE ASSISTANCE



The Tournament The Game. The Dream. The Game. The Dream. The Parents from Hell.

SEASON PREMIERE, TUESDAY, NOVEMBER 15 at 8:30 pm

KIA KIA MOTORS The Power to Surprise™



Georgetown Kia 314 Guelph St, Georgetown On (905) 877-7818



EVLT

(Endo Venous Laser Treatment)

Get rid of those veins with laser, the new alternative to surgery.

No general anesthesia.

Early return to work.

For more information call

905-693-1795 (Milton)

e-mail: Dr.makar@evlt.ca

PATRICIA'S CARPET AND FLOORING

SHOP AT HOME SERVICE WHY PAY RETAIL?



Patricia Zawadowski 416-938-4045

Sales and Installation

- Residential/Commercial Carpet • Vinyl/VCT Tiles
- Hardwood/Laminate • Ceramic

JOJO ON WHEELS

Mobile Beauty Salon

905-872-JOJO (5656)



jojo_daley@yahoo.com www.jojoonwheels.ca

- Men/Women/Kids Haircuts
- Colour & Perms
- Manicures & Pedicures,
- Facial Hot Wax
- Weddings, Parties & more
- House Calls

\$10.00 OFF on PERMS (From \$50.00)

With a MANICURE (From \$25.00)



MUNICIPAL PROPERTY ASSESSMENT CORPORATION

Extended Hours of Operation

November 7 to November 18, 2005

MPAC Office – Halton & Peel

6745 Century Avenue

Suite #1

Mississauga

8:00 a.m. to 7:00 p.m.

Representatives from MPAC will be in the office to discuss the Assessment Notices recently sent to property owners in Halton & Peel.

1 866 296-MPAC (6722)