



105 DAIRY DRIVE, ACTON - \$379,900

MURRAY TAYLOR
Assoc. Broker

519-824-9050



Stately New England style, 2-1/2 storey home with a stunning 4 season solarium (all glass) family room. It's gorgeous. Another unexpected extra is the 3rd floor loft, an ideal 4th bedroom, playroom, hobby room, you name it. Beautifully finished basement with 3rd fireplace and 4th bathroom. All this on a HUGE pie-shaped lot. **Murray Taylor**** 519-824-9950 ext. 214.



RE/MAX
PERFORMANCE REALTY INC.

Direct Line:
87REMAX
(877-3629) OR
Office Pager:
(905) 840-8400

ANGIE CORMPILAS
Broker - Re/Max Lifetime Achievement

#1 Georgetown Realtor for Listings SOLD
1998, 1999, 2000, 2001, 2002, 2003, 2004
#1 Re/Max Agent in Georgetown units SOLD,
1998, 1999, 2000, 2001, 2002, 2003, 2004
#1 Georgetown South EXPERT

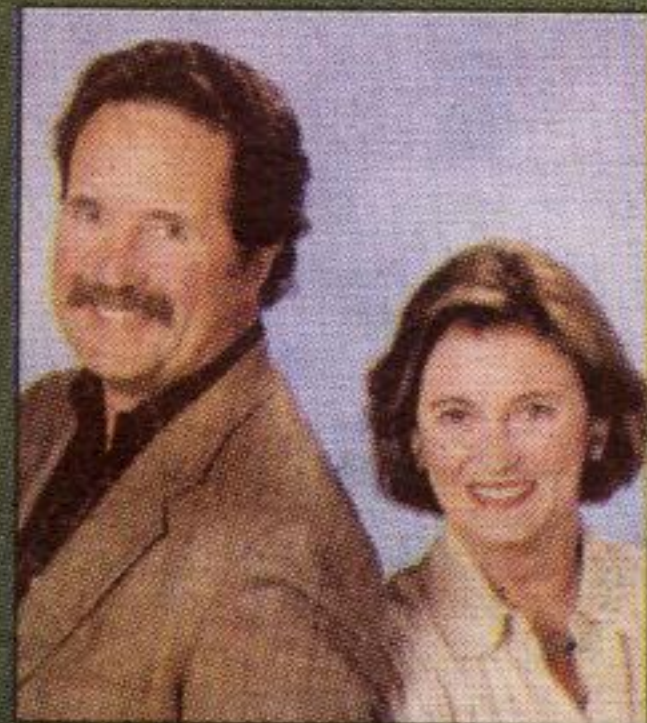
#1 RE/MAX FEMALE REALTOR IN CANADA FOR 2003

www.realestategeorgetown.com

Houses for Sale:

Details in Weekend Edition of this paper or
Call Me Today!

- | | |
|------------------------------|-----------------------------------------|
| Georgetown South - \$499,900 | Craig Cres. - Triple Garage! Fin. Bsmt |
| Georgetown South - \$419,900 | Smith Dr. - Finished Bsmt, Huge Lot |
| Georgetown South - \$469,900 | Craig Cres. - Wide Lot |
| Georgetown South - \$349,900 | Roane Dr. - Nice Yard, Quiet Street |
| Georgetown South - \$429,900 | Samuel Cres. - Huge Pie Lot |
| Georgetown South - \$384,900 | Standish St. - Part. Finished Basement |
| Georgetown South - \$359,900 | Harrop Ave. - Finished Basement |
| Georgetown - \$599,900 | 22nd Sdrd - 5 Acres, Workshop |
| Georgetown - \$699,900 | 15 Sideroad - Luxurious Bung. on 1 Acre |
| Georgetown - \$429,000 | Banting Rd. - Finished Bsmt |
| Georgetown - \$514,900 | Arborglen Dr. - Backs Onto Ravine |
| Georgetown - \$279,900 | Stevens Cres. - HUGE lot, I/G Pool |



Patrick Bogert & Sandy Ball
Sales Representatives
www.BogertandBall.com



Sandra Brianceau
Sales Representative
www.sandrabrianceau.com



CHESTNUT PARK
Real Estate Limited - Realtor



www.chestnutpark.com

1-866-901-0888

(519) 833-0888



Karen Lay
Sales Representative
www.karenlay.com



Jackie Eagles
Sales Representative
www.jackieeagles.com

Please visit us at our Erin office at 4 Main Street, Erin



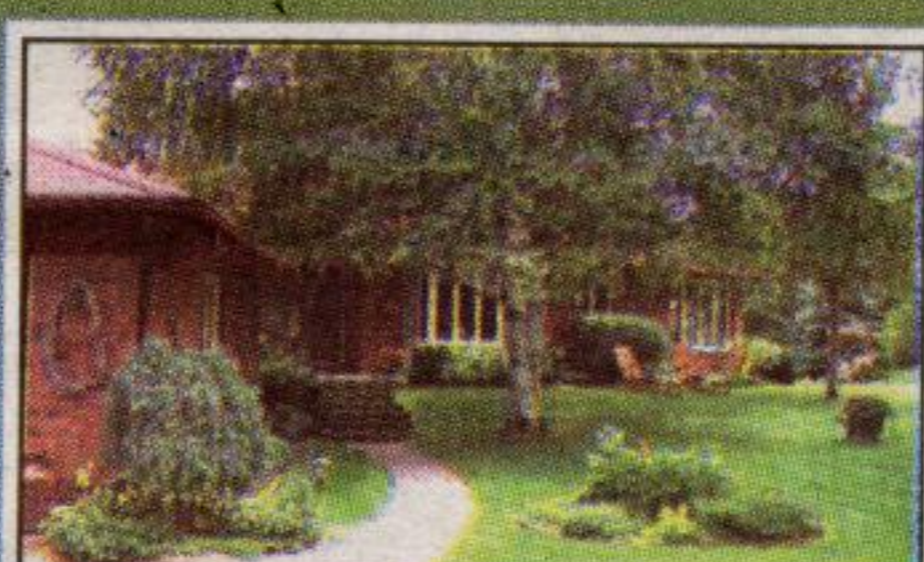
SOMMERHILL FARMS

\$829,000. Gorgeous 50 acre (approx.) property with updated century home and inlaw apt. Hardwood throughout! Great barn, paddocks, pasture, trails & the Grand River. **Karen Lay***.



ERIN HORSE FARM OPPORTUNITY

\$749,000. A great way to get into the wonderful world of horses. Over 95 acres, lge. Farmhouse, 2nd residence for farmhand, barn, arena, paddocks, gorgeous land & so much more. On the south side of Erin makes for an easy commute. **Sandra Brianceau***.



A BURST OF COLOUR!

Year round family living or weekend retreat overlooking Hockley Valley. Custom brick bungalow with million \$\$\$ views and woodland trails on 20 acres. **\$689,000. Patrick Bogert* & Sandy Ball***.



SOPHISTICATED CONTEMPORARY

\$622,000. Perfect for couples/professionals/retired - breathtaking landscape, in-ground pool, privacy and very unusual 10 acres. See now, Call **Patrick Bogert*/Sandy Ball*** to view.

SOLDS



NESTLED IN THE HILLS

Perched high on a hill in the spectacular Mono Hills on 25 acres. **Karen Lay***.



SOUTH ERIN HOBBY FARM

Great opportunity! 9.4 Acre hobby farm in south Erin w/5 stall barn, 3 lge. paddocks, endless trails & woods. Beautiful 4 bdrm stone/brick bungalow has undergone many recent upgrades and is just min. to GO Transit for easy commute. **\$524,900. Sandra Brianceau***.



38 ACRES OF ERIN COUNTRYSIDE

\$469,000. Spacious 3 bdrm., 2 storey wood home w/lge eat-in kitchen handy mudroom, wrap-around deck, fire pit, century bank barn, workshop and 2+ acres of gorgeous ponds. Only 45 mins. to the 401. Come and explore the possibilities! **Karen Lay***.



AN ERIN BEAUTY!

Sparkling newer home in sought after area in south Erin. Bright open concept eat-in kitchen overlooks large lot and cosy living room with fireplace & hwd flrs. Formal dining & family room w/hrwd, master with ensuite & so much more. A must see for \$424,900!! Listed below recent comparable sales! **Sandra Brianceau***.



TRANQUIL VISIBILITY

\$399,900. Great country home with excellent location for commuting and/or home based business. 2.66 scenic acres on Erin/Caledon/ Belfountain border. 3 bdrms., 2 baths, spiral staircase leads to loft on 3rd flr. w/3 pce bath. All major upgrades completed. **Sandra Brianceau***.



VICTORIA FARMHOUSE

Century home on 39 acres with spring-fed poond, streams, mature forest. Just hour to Pearson Airport. **Karen Lay***.

FOR RENT



STONE HOUSE

Overlooking pond, pretty setting, sleeps up to 8 ppl. \$1800 per month. Please call **Patrick Bogert and Sandy Ball***.



STATELY CENTURY HOME IN HILLSBURGH

\$359,900 4 Bdrm/2 bath family home set atop the rolling hills at the North end of town. Many upgrades including air, 200 amp service, newer shingles, furnace and water heater. Lovely original wood trim throughout. Income potential - former duplex. **Sandra Brianceau***.



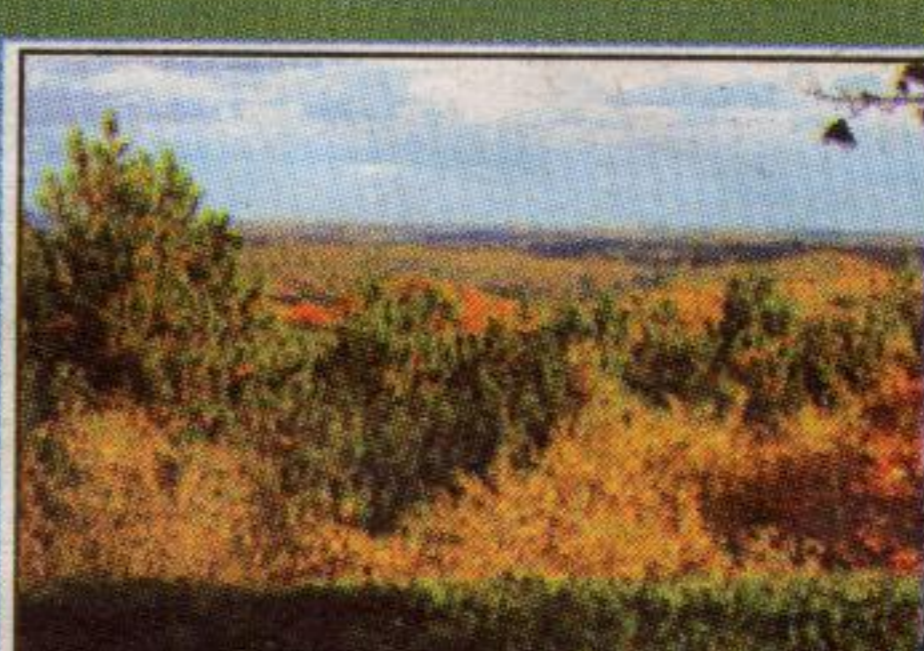
LIVE IN-TOWN, FEEL THE COUNTRY

A beautiful family home situated on a gorgeous 220 foot deep lot backing onto treed ravine and only 1 neighbour beside. 3 bed, 3 bath, living and family rooms, Central Air, Central Vac, located on a low traffic street in Erin. A great find for \$319,000! Call **Sandra Brianceau*** for details.



A BIT OF EVERYTHING

Spacious home, heated workshop with 60 amp service, large private back yard backing onto park, walking distance to amenities and a great price. This 3 bdrm home has undergone many updates over the past few years and is just waiting for you to escape the congestion of the city and move in and appreciate the quiet small town living in Hillsburgh. It's worth the drive!! Only **\$259,900** Call **Sandra Brianceau*** today.



VACANT LAND

\$199,900. 1.7 acres in South Erin Country. Call **Sandra Brianceau*** for details.

1-866-901-0888



CHESTNUT PARK
Real Estate Limited - Realtor



(519) 833-0888

HEAD OFFICE: 1300 Yonge Street, Suite #100, Toronto, Ontario, M4T 1X3 Telephone: (416) 925-9191 Fax: (416) 925-3935 Email: homes@chestnutpark.com