

Lynn & John Drewry

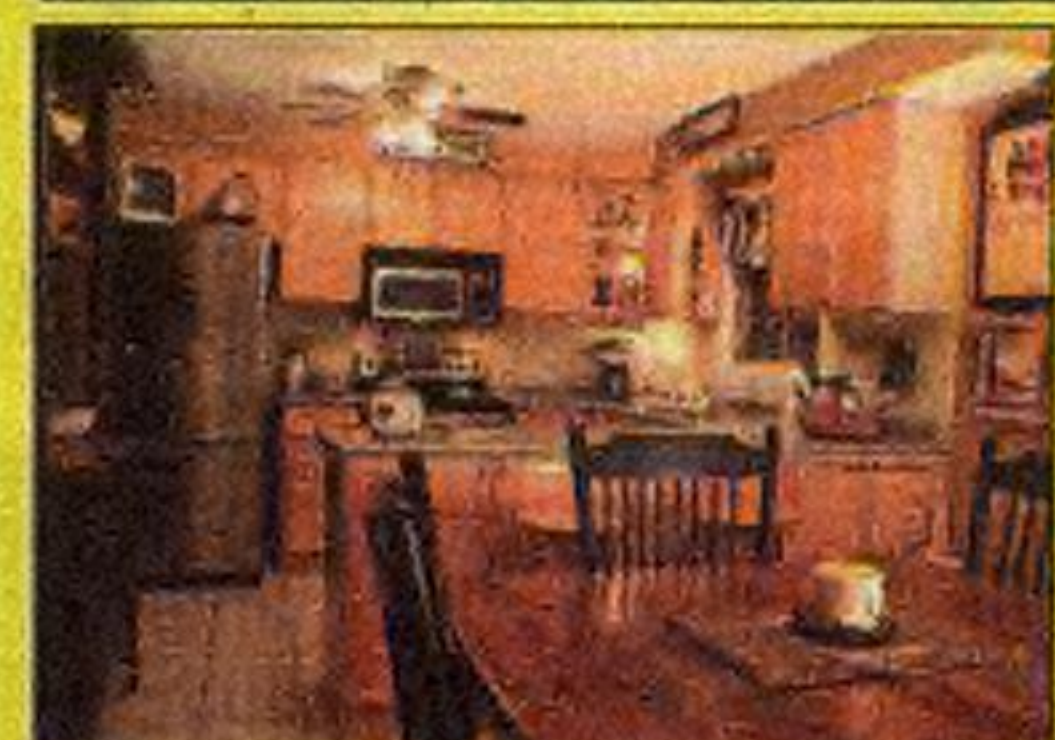
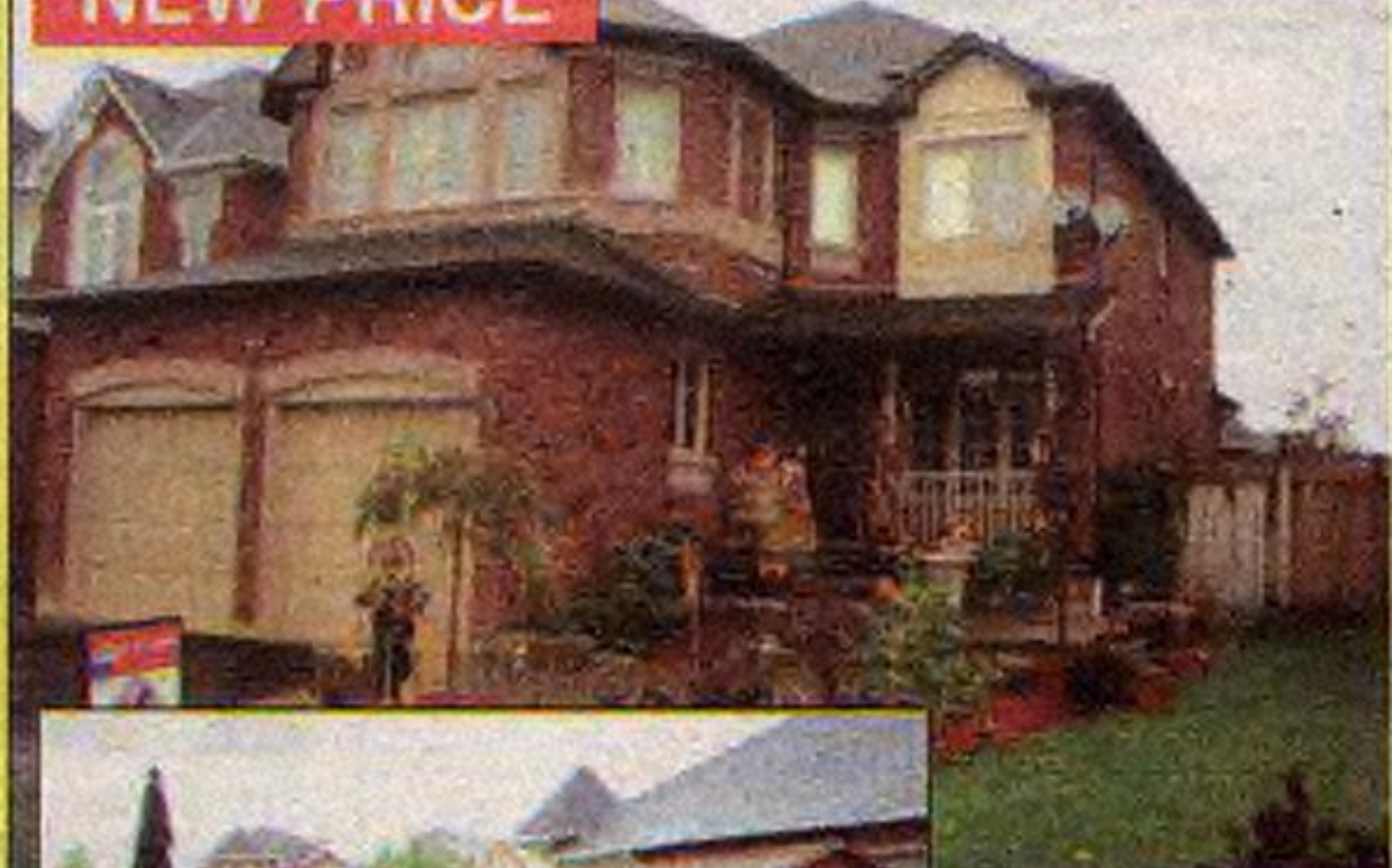
*Sales Representative

**Associate Broker

SOME FABULOUS HOMES JUST LISTED!!!

NEW LISTING
NEW PRICE

\$419,900



WONDERFUL UPGRADED
FERNBROOK WESTMINSTER
5 YRS NEW - STEPS TO SCHOOLS &
COMMUNITY CENTRE

- Fabulous Fernbrook, popular model less than 5 yrs new
- Attractive floor plan and wonderful curb appeal
- 4 Bedrooms, 3 Bathrooms + Finished Rec Room
- Beautiful private lot, NO HOMES behind overlooking
- Interlock/ slate walkways, 2 level cedar Deck w/lighting
- Professional Landscaping & Irrigation front & back
- Main floor Ceramics, Hardwood and freshly Painted
- Sep Living rm coffered ceilings, 2-sided Fireplace
- Formal Dining room, hardwood floors & coffered ceilings
- Open concept Family rm, 2-sided fireplace, pot lighting
- Beautiful oak Kitchen & sep convenient butler's Servery
- Lots of cabinets/counters, designer lighted corner cabinets
- Ceramic floors & marble backsplash + pot drawers & lights
- SS Fridge & Stove, B/i Microwave & Dishwasher
- Main floor Laundry, cabinets, closet, access to garage & side
- Master bedroom retreat with vaulted ceiling, 5 piece ensuite
- Lrg sep Shower, dbl Sinks, corner soaker Tub & w/ Closet
- Basement has Rec room, amazing storage rm & Workshop

STUNNING AVON ON HUGE PIE-SHAPED LOT
TOTALLY UPGRADED ON QUIET CRESCENT

NEW LISTING, NEW PRICE

\$359,900



- Enormous mature pool sized lot, no traffic, 10 homes
- Immaculate & beautifully decorated in neutral tones
- 3+1 Bdrms, 3 full Bthrms, fin Bsemt + 2 car garage
- Upgrades: Wonderful totally renov bright Kitchen
- Lots of counters and cabinetry, ceramic backsplash
- All 3 full Bathrooms are upgraded and stunning
- Bright above grade Family rm w/ new broadloom
- Large brick Fireplace recently converted to Gas
- Plus 4th Bdrm, dbl closet and 3 piece Ensuite

- Shining hardwood thruout, refin dark-stained Oak
- Vinyl Windows plus interior and exterior Doors
- Interlock Patio & walkways, Hi eff Furnace/Air
- California Shutters, freshly painted, lights/fixtures
- Pot lighting, wall Sconces, Laundry chute
- Customized Master with new 3 pc Ensuite
- Ceiling lights and fans installed in the 2 bedrooms
- Easy access out of Geo to 401, 403, 407
- Steps to Greenbelt and nature trails, Close to Schools

GLEN WILLIAMS

\$769,900



GLEN WILLIAMS EXECUTIVE - PRESTIGIOUS OAK RIDGE DR
4 + 1 BEDROOMS - 4 CAR GARAGE - FINISHED BASEMENT

- Wonderful estate home backing onto farmland
- Quiet limited access street with centre boulevard
- Great views all directions, NO homes behind
- Nestled on .4 Acres of mature park-like setting
- Fin Basement, 8' ceilings, Rec rm & Pool room
- Oak bar and fridge, plus 5th bedroom
- Main floor Den, 9 foot Ceilings, 2 Fireplaces
- Formal Living & Dining rms divided by Frplc
- Huge oak gourmet Kitchen with triple pantry
- Huge Master, Sitting area, his & her Closets
- Luxury 6pc Ensuite, Jacuzzi, Shower & Vanity



RE/MAX[®] REALTY
SPECIALISTS
INC.

Direct
Office 1

(905) 873-0440
(800) 263-3434

www.lynnandjohn.ca
E-mail:
lynn@lynnandjohn.ca



Johnson Associates

HALTON LTD., REALTOR

JESSIE JACOBS *Sales Rep.

(905) 877-5165



Web Site: <http://www.haltonhills.com/jessiejacobs>



PLEASE
ALLOW
ME TO
INTRODUCE
YOU TO
50 DAIRY DRIVE,
ACTON

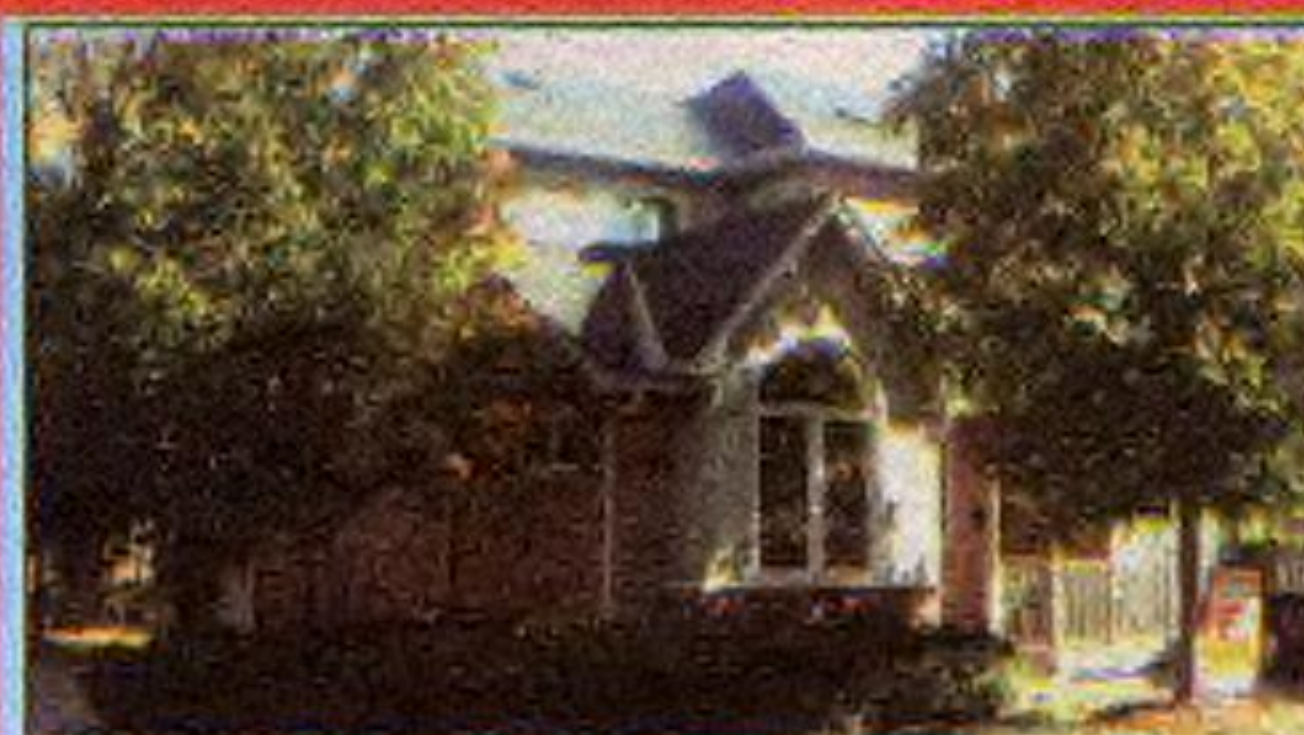
This Cardinal model is absolutely stunning, garage extended extra 5'. Gorgeous 'Barzotti' kitchen, front porch extended, 3rd bedroom extended, incredible lower level has been beautifully finished in 'Leathertown' barnboard, central air/vac, walkout to beautiful rear yard complete with party sized deck and gazebo. Must be seen to be appreciated.

"THIS IS DEFINITELY NOT A DRIVE BY"



If you are looking for a 3+ bedroom bungalow in immaculate condition then look no further!! Plus a single car garage, plus a magnificently finished lower level. Please call Jessie* A.S.A.P.

HAVE A SAFE AND HAPPY HALLOWEEN KIDS!
BRING YOUR POSTER IN FOR THE
JOHNSON ASSOCIATES COLOURING CONTEST
IN OUR LOCAL PAPER AND YOU WILL GET A FREE PUMPKIN.
AND ... MAYBE YOUR POSTER WILL WIN A PRIZE!!!



STUNNING
EXECUTIVE
"DANIELS"
TOWNMANSOR

ABSOLUTELY STUNNING
DOUBLE DRIVEWAY,
ONLY 3 OF THIS
FABULOUS MODEL

1635 SQ. FT. PLUS
PROFESSIONALLY
FINISHED LOWER
LEVEL



ELEGANT
SEPARATE
DINING
ROOM



HEATED
INGROUND
POOL
ON
SITE



ROMAN
COLUMNS
OPEN TO
LIVING/FAMILY
ROOM WITH
GAS FIREPLACE



GORGEOUS
UPGRADED
KITCHEN



BEAUTIFUL
FINISHED
LOWER
LEVEL



HUGE
BREAKFAST
ROOM
WITH
PALLADIUM
WINDOW



EXQUISITE
JACUZZI
IN
ENSUITE
BATH



GORGEOUS
STAINED
GLASS
WINDOW IN
DINING
ROOM