



GEORGETOWN TOYOTA'S HOTTEST NEW PROGRAM!

YOUR DRIVEWAY'S NEXT top model 2006

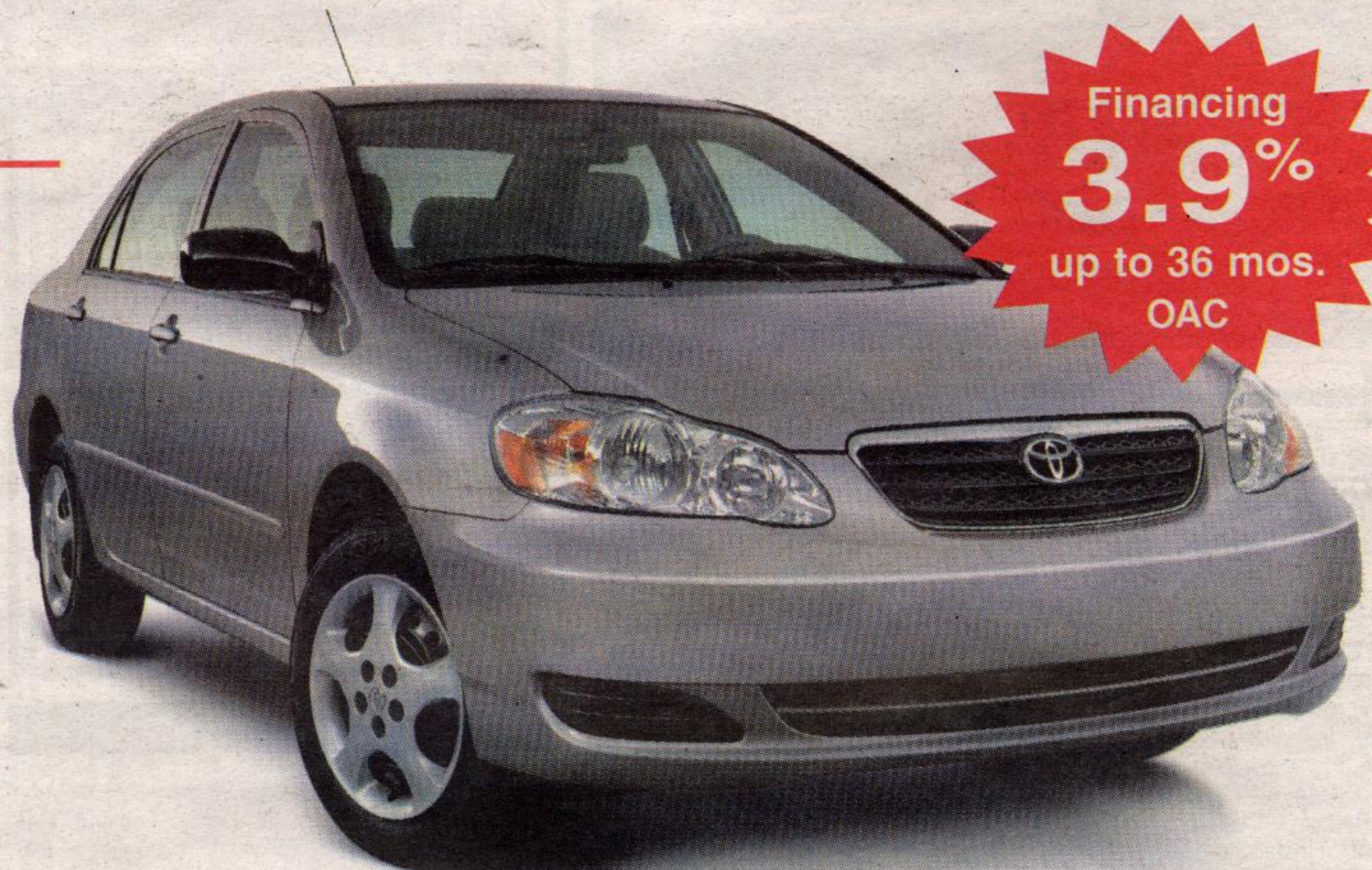
2006 Corolla CE

\$17,725 MSRP

LEASE FOR **\$209*** PER MONTH FOR 48 MONTHS WITH \$3,381 DOWN. FREIGHT AND P.D.E. INCLUDED.

FUEL CONSUMPTION:
HWY 5.3L/100 KM (53 MPG) †
CITY 7.1L/100 KM (40 MPG) †

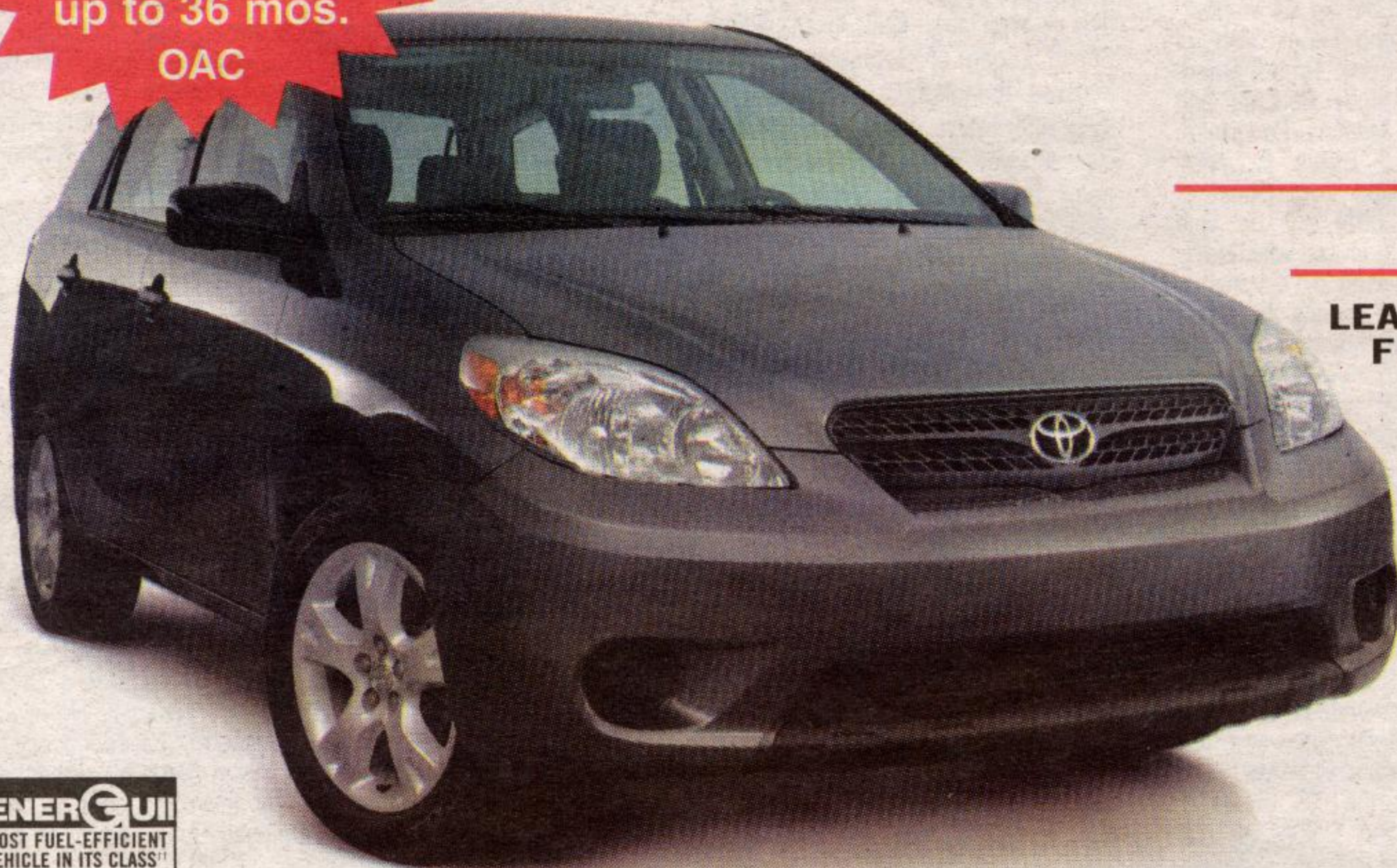
- 1.8 L, 126 hp engine
- 5-speed manual transmission
- A/C • AM/FM stereo CD
- Power locks and mirrors
- Keyless entry & more



Financing
3.9%
up to 36 mos.
OAC

Financing
3.9%
up to 36 mos.
OAC

ALSO STARRING



2006 Matrix

\$19,905 MSRP

LEASE FOR **\$239*** PER MONTH FOR 48 MONTHS WITH \$3,325 DOWN. FREIGHT AND P.D.E. INCLUDED.

FUEL CONSUMPTION:
HWY 5.9L/100 KM (48 MPG) †
CITY 7.9L/100 KM (36 MPG) †

- 1.8 L, 126 hp engine
- 5-speed manual transmission
- A/C • Keyless entry with hatch release • AM/FM stereo CD
- 16" Aluminum alloy wheels & more

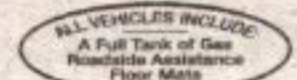
GREAT OFFERS AVAILABLE ON REMAINING 2005 MODELS

ONTARIO TOYOTA DEALERS



REAL PEOPLE SELLING GREAT CARS®

Where can you find your favourite Toyota Dealer? Simply visit us at www.georgetowntoyota.com



*Leasing plans from Toyota Financial Services. O.A.C. Offers valid on 2006 Corolla (Model BR32EMB), 2006 Matrix (Model KR32EMB), 2006 Camry (Model BE32KAA), 2006 Sienna (Model ZA30CPA) and 2006 Highlander (Model HP21APA). Freight, and P.D.E. not included in MSRP. Based on 48-mos. lease rate 5.9% APR on 2006 Corolla, 2006 Matrix, 2006 Camry, 2006 Sienna and 2006 Highlander. License, registration fees, insurance and taxes extra. Lease includes freight and P.D.E. cost of \$1,060/\$1,060/\$1,160/\$1,310/\$1,310. Down payment or trade equivalent of \$3,381/\$3,325/\$4,280/\$6,327/\$5,685 plus first payment due at lease inception. Security deposit of \$250/\$275/\$350/\$400/\$525. Total lease obligation of \$13,413.31/\$14,797.37/\$18,152.62/\$22,599.50/\$26,757.17 and purchase option price of \$8,153.50/\$9,355.35/\$11,995.20/\$14,168.46/\$18,549.44 based on a maximum of 96,000 KMS. Additional KM charge of \$.07/.07/.10/.10/.15 if applicable. MSRP of \$17,725/\$19,905/\$24,990/\$30,800/\$37,855. † Based on 2005 Fuel Consumption Guide ratings published by Natural Resources Canada. † These estimates are based on the Government of Canada's approved criteria and testing methods. The actual fuel consumption of these vehicles may vary. Refer to the Government of Canada publication EnerGuide Fuel Consumption Guide.

GEORGETOWN TOYOTA SALES

15 MOUNTAINVIEW RD. N., - GEORGETOWN (905) 877-2296 Tor. 874-4276

WEBSITE at www.georgetowntoyota.com or E-MAIL at info@georgetowntoyota.com

