

REGIONAL REAL ESTATE

OPEN HOUSE
SUN OCT 23 2-4PM
2681 LOWER BASE LINE



AL VOLPE
Sales Representative
(905) 842-7000

WELCOME TO THE COUNTRY

This bungalow offers you 1 acre with 2 car garage, inground pool with pool house, sauna, shower and change room. Granite kitchen and wall to wall granite bathrooms. Home has 3 bedrooms with finished basement, granite walkways and much more.



RE/MAX

PERFORMANCE REALTY INC.

Direct Line:

87REMAX
(877-3629) OR

Office Pager:

(905) 840-8400

ANGIE CORMPILAS

Broker - Re/Max Lifetime Achievement

- #1 Georgetown Realtor for Listings SOLD 1998, 1999, 2000, 2001, 2002, 2003, 2004
- #1 Re/Max Agent in Georgetown units SOLD, 1998, 1999, 2000, 2001, 2002, 2003, 2004
- #1 Georgetown South EXPERT

#1 RE/MAX FEMALE REALTOR IN CANADA

www.realestategeorgetown.com

Houses for Sale:

Details in Weekend Edition of this paper or Call Me Today!

- | | |
|------------------------------|---|
| Georgetown South - \$499,900 | Craig Cres. - Triple Garage! |
| Georgetown South - \$423,900 | Gollop Cres. - Large Corner Lot |
| Georgetown South - \$419,900 | Smith Dr. - Finished Bsmt, Huge Lot |
| Georgetown South - \$469,900 | Craig Cres. - Wide Lot |
| Georgetown South - \$354,900 | Roane Dr. - Nice Yard, Quiet Street |
| Georgetown South - \$434,900 | Samuel Cres. - Huge Pie Lot |
| Georgetown South - \$384,900 | Standish St. - Part. Finished Basement |
| Georgetown South - \$407,900 | Barber Drive |
| Georgetown - \$599,900 | 22nd Sdrd - 5 Acres, Workshop |
| Georgetown - \$339,900 | Ruddell Cres. - 1660 SF Plus Fin. Bsmt |
| Georgetown - \$769,900 | 15 Sideroad - Luxurious Bung. on 1 Acre |
| Georgetown - \$439,900 | Banting Rd. - Finished Bsmt |
| Georgetown - \$529,900 | Arborglen Dr. - Backs Onto Ravine |

YOUR REGIONAL REAL ESTATE PAGE

\$474,900



LIZ CRIGHTON
Sales Rep.
(905) 877-5211
1-800-834-5516

ERIN 10 ACRE COUNTRY HOME

Come for a drive in the country, see the fall colours and buy this privately tucked away home surrounded by trees, woods, pond and stream. This warm and comfortable log and wood home with open concept design, has been meticulously cared for over its 25 year life. Don't just drive by, you really need to get inside this one to appreciate the size, and quality. You will want to walk the grounds. MLS#X727895 307-05

\$279,900



COUNTRY HOME ON 1.18 ACRE LOT

Feast Your Eyes oN this beautiful property all completely fenced and private. Room for a Large Family in this 2 storey home, with a second kitchen upstairs, eat-in Kitchen on main level and a walk-out from the basement. Newer drilled well and newer oil tank. Wheelchair accessible at front of house. Lots of lovely gardens and creative art work to enjoy... MLS#X751799 363-05

\$275,000



COMPLETELY RENOVATED HOME, OUTSTANDING SHOP!!

Wonderful 3 bedroom maintenance free home on great lot with two double driveways, one being on a quiet side street, and loads of parking. Outstanding shop 20'x40' with two loading doors and 100 amp service. Super clean and well kept home ready to move right in featuring central air, newer high efficiency gas furnace, gleaming maple hardwood floors, newer windows, gas stove, main floor laundry and 2 washrooms. Worth the drive to Hillsburgh. MLS#X703822 250-05

\$330,000



BIG BUNGALOW, PERFECT LOCATION

All brick bungalow with a new roof being installed Canada Day! This totally private setting in the hamlet of Ballinafad is walking distance to everything, Park, Community Centre, Post Office and Shops. The home is bright, spacious and well maintained with great lot. Home occupation in garage (on its own septic system). Huge paved driveway, lots of parking. Separate entrance to the basement. (was at one time an apt.). Shop 6.11 x 3.86 MLS#X704819 252-05



Patrick Bogert & Sandy Ball
Sales Representatives
www.BogertandBall.com



Sandra Brianceau
Sales Representative
www.sandrabrianceau.com



CHESTNUT PARK

Real Estate Limited - Realtor



www.chestnutpark.com

1-866-901-0888

(519) 833-0888

Please visit us at our Erin office at 4 Main Street, Erin



Karen Lay
Sales Representative
www.karenlay.com

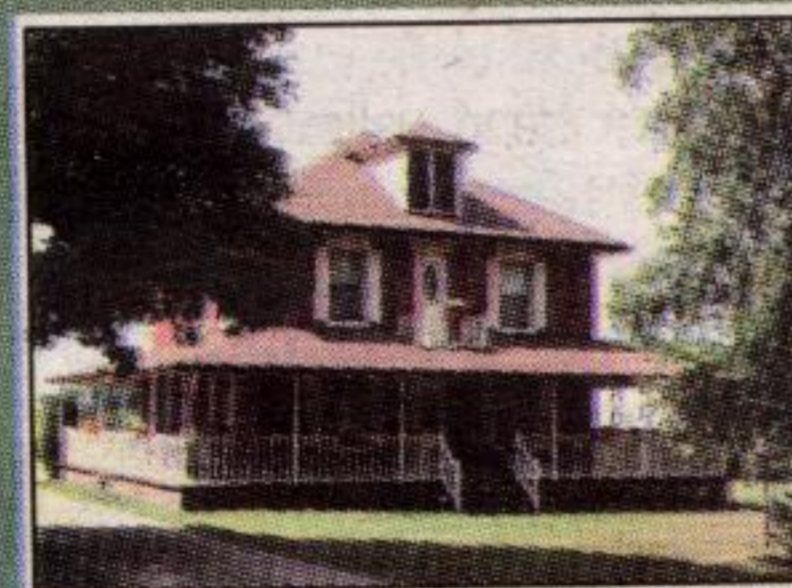


Jackie Eagles
Sales Representative
www.jackieeagles.com



SOMMERHILL FARMS

Fabulous 50 Acre (approx) property w/ updated century home w/addition & in-law Apt.. Hardwood throughout. Great barn, paddocks, trails & the Grand River. A must see! **Karen Lay***



CENTURY FARMHOUSE IN ERIN

Distinctive 4 bedroom brick farmhouse on 47 acres with long views, wrap around verandah, bank barn, stream, and pond sites, \$\$\$ in recent upgrades/ finishes **\$798,000. Karen Lay***



ERIN HORSE FARM OPPORTUNITY

\$749,000. A great way to get into the wonderful world of horses. Over 95 acres, lge. Farmhouse, 2nd residence for farmhand, barn, arena, paddocks, gorgeous land & so much more. On the south side of Erin makes for an easy commute. **Sandra Brianceau***



SOPHISTICATED CONTEMPORARY

\$622,000. Perfect for couples/professionals/retired - breathtaking landscape, in-ground pool, privacy and very unusual 10 acres. See now, Call **Patrick Bogert*/Sandy Ball*** to view.



38 ACRES OF ERIN COUNTRYSIDE

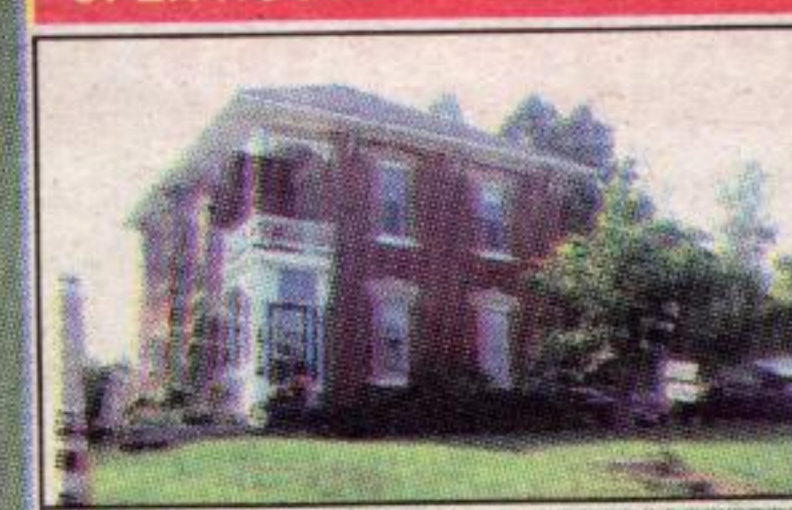
\$469,000. Spacious 3 bdrm., 2 storey wood home w/lge eat-in kitchen handy mudroom, wrap-around deck, fire pit, century bank barn, workshop and 2+ acres of gorgeous ponds. Only 45 mins. to the 401. Come and explore the possibilities! **Karen Lay***



NESTLED IN THE HILLS

\$419,000. Perched high on a hill in the spectacular Mono Hills on 25 acres of mixed forest, this tasteful, open concept 1+1 bdrm bungalow w. wall-to-wall windows in LR c/b a perfect weekend retreat or full year residence. Proximity to Bruce Trail!! **Karen Lay***

OPEN HOUSE SUN, OCT. 23rd - 2-4 P.M. - 132 Main Street, Hillsburgh



STATELY CENTURY HOME IN HILLSBURGH

\$359,900 4 Bdrm/2 bath family home set atop the rolling hills at the North end of town. Many upgrades including air, 200 amp service, newer shingles, furnace and water heater. Lovely original wood trim throughout. Income potential - former duplex. **Sandra Brianceau***



LIVE IN-TOWN, FEEL THE COUNTRY

A beautiful family home situated on a gorgeous 220 foot deep lot backing onto treed ravine and only 1 neighbour beside. 3 bed, 3 bath, living and family rooms, Central Air, Central Vac, located on a low traffic street in Erin. A great find for **\$319,000!** Call **Sandra Brianceau*** for details.



A BIT OF EVERYTHING

Spacious home, heated workshop with 60 amp service, large private back yard backing onto park, walking distance to amenities and a great price. This 3 bdrm home has undergone many updates over the past few years and is just waiting for you to escape the congestion of the city and move in and appreciate the quiet small town living in Hillsburgh. It's worth the drive!! Only **\$259,900** Call **Sandra Brianceau*** today.

1-866-901-0888



CHESTNUT PARK

Real Estate Limited - Realtor



(519) 833-0888

HEAD OFFICE: 1300 Yonge Street, Suite #100, Toronto, Ontario, M4T 1X3 Telephone: (416) 925-9191 Fax: (416) 925-3935 Email: homes@chestnutpark.com