

REGIONAL REAL ESTATE



NEW PRICE

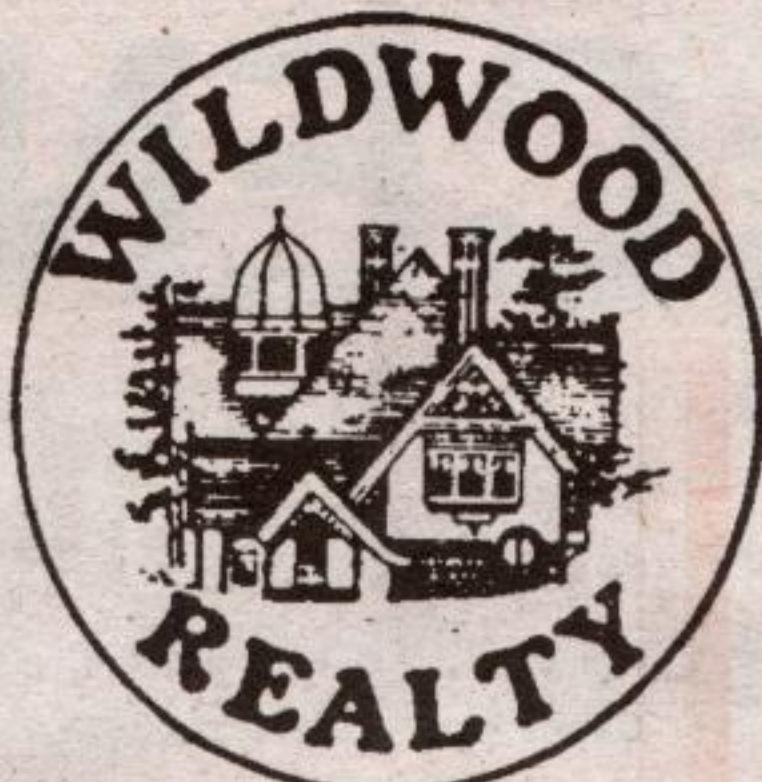
\$599,900



COUNTRY IN THE CITY - A ONE OF A KIND OPPORTUNITY

Situated on Neilson Drive, south of Bloor, just west of 427. Build your dream home on a premium 1/2 acre treed valley lot in Etobicoke. 90.03 feet frontage. Backs onto Renforth Creek. Close to recreation amenities, golf course, schools, Sherway/Cloverdale, Queensway Hospital. Easy access to TTC, 427, 401, QEW. House is As Is Where Is condition. Call **John Day*** for details.

05-575-99



Wildwood Realty Inc.

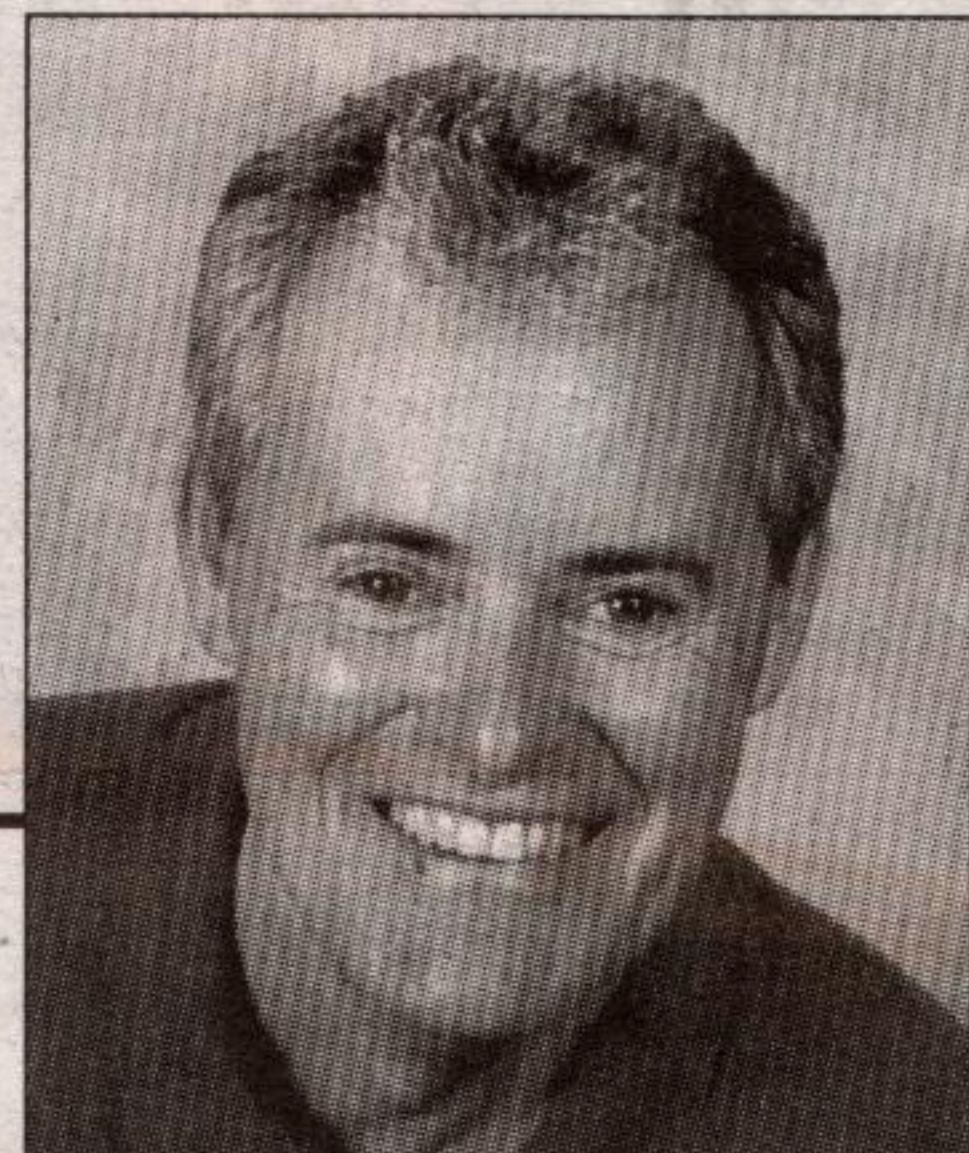
REALTOR

85 GUELPH STREET, Georgetown

Georgetown Office

873-8839 454-8706

Serving Georgetown Area Since 1970



BRUCE ELMSLIE***
Broker/Owner

**YOUR HOUSE SOLD IN 90 DAYS
OR BRUCE ELMSLIE BUYS IT!!!**

Shop for your new home with a "GUARANTEE SALE" for the one you are leaving behind. (some restrictions apply)
Here's how it works!!

The agreement with me is to sell your property within a specific period of time. If I am unsuccessful . . . I will purchase your property for the agreed price we have established. That's how confident I am in the ability to find a buyer. Should we be fortunate enough to obtain a higher price than agreed upon, I will rebate the difference to you.

Wouldn't it be a relief to shop for your new home with "ready cash"?? That's how you make a better purchase! A pretty "risky" move for me? Not really! It is my business to sell properties and I've got a whole lot going for me . . . powerful advertising programs to market your property correctly, along with the financial connections to assist you when making the move.

"Let me work for you . . . I have specialized in the marketing of resale properties in the Georgetown area for over 34 years. I started my real estate career with Fobert Real Estate Ltd. in 1970, received countless awards for "top sales achievements", then moved to Re/max as an associate broker and received "top sales awards" three years running. I established "Wildwood Realty Inc." in 1987 and have been very successful in the sale of town and country properties in this area since that time.

Please contact me if you are planning a move, you will be delighted with the efficient and courteous service my Real Estate Company has to offer.

"WATCH FOR OUR LISTINGS IN THE WEEKEND PAPER!!"

Bruce Elmslie is Committed to satisfaction:

When You Purchase Your Home Through Me And You Aren't Completely 100% Satisfied For Any Reason . . .
I'll Sell It for FREE . . . It's Just That Simple.



Call **EFFIE DIMOU**
For all your Real Estate Needs!
If you are thinking of Moving,
Call **EFFIE DIMOU**
at **905-840-8400**

EFFIE DIMOU RE/MAX PERFORMANCE
Sales Representative REALTY INC.

Serving Milton, Georgetown,
Oakville, Burlington,
Brampton, Mississauga and
surrounding areas.



HALL OF FAME

RE/MAX
Real Estate

Town & Country Sales Representative

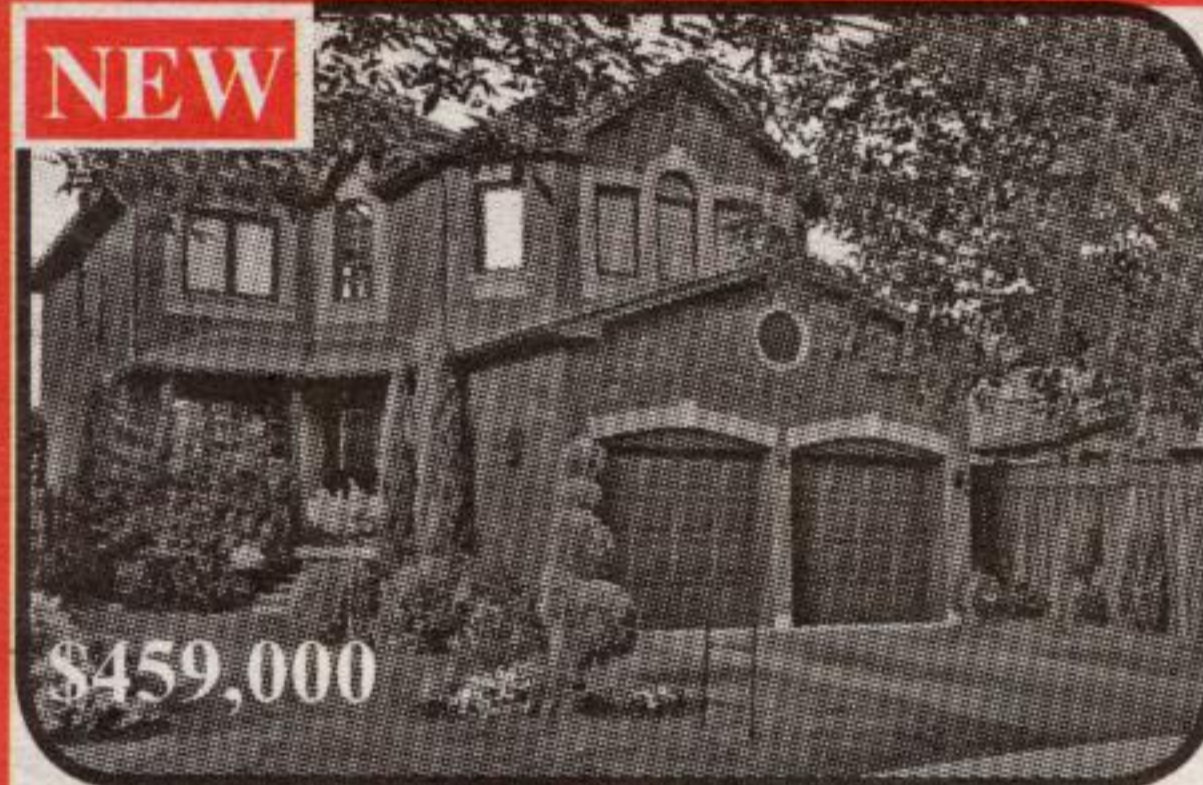
Centre Inc.

(905) 877-5211

1-800-834-5516

Directions & Photos

<http://maureen.ca>



NEW

\$459,000

Elegant 4 bdrm, 3 WR, upgraded & landscaped, on huge pie lot. Heated i/g pool & sep large play yard. Hardwood in LR, DR, Fam rm & kit. Granite floors in Indry rm & 2pc. 6" baseboards, wide trim, pot lights & French doors. Prof painted. New sliding doors. MBR with sep shower & o/s tub. Bsmt insulated to floor. R/i WR. Cold cellar. \$459,000!

Georgetown South: 4 Harrop Avenue



\$659,000

Stunning Olde English Pub style home + sep gar/shop & studio backing onto gorge & river. Focal pt: "theater" kit o/l DR & Fam Rm w wet bar + modern kit. 3 FPs! Hand finished columns & beams!



\$819,000

"Moorecroft". Authentic Queen Anne, 1896, with original eclectic embellishments. Impressive central hall. Hrdwood floors. Glorious stained glass. 1/g pool. Det 2 car gar. Huge lot, 132' x 132'.



\$890,000

Milton: 100 "sq" Ac
~ 4 min to 401 at Guelph Line. Near Mohawk Track & Casino. NW corner of 2nd L & 10th SR. Fronts on 2 paved rds. Across from school. Good barn & drive shed. Perfect for horse facility.



~186 Ac

Caledon: fine race horse facility. ~ 49 stalls. 4 large barns + new office/lab/ breeding barn. 3 tracks. Manager's house & 2 staff trailers. S of Hwy 9, W of Airport Rd. 19726 Mountainview Rd



NEW

\$939,000

Excellent location, Steeles, W of Trafalgar. Zoned M1, General Indus with accessory com & res uses. Stunning, 3+ bdrm, open concept home with ~15ft ceilings & huge windows. (Could be office area.) Indus area: ~ 4800 sq ft (incl bsmt). 12' clearance. 1 acre with privacy gates, pkg for many vehicles & private patio. Mun water & sewers by end of 2006.

Halton Hills: 13029 Steeles Ave, West



NEW

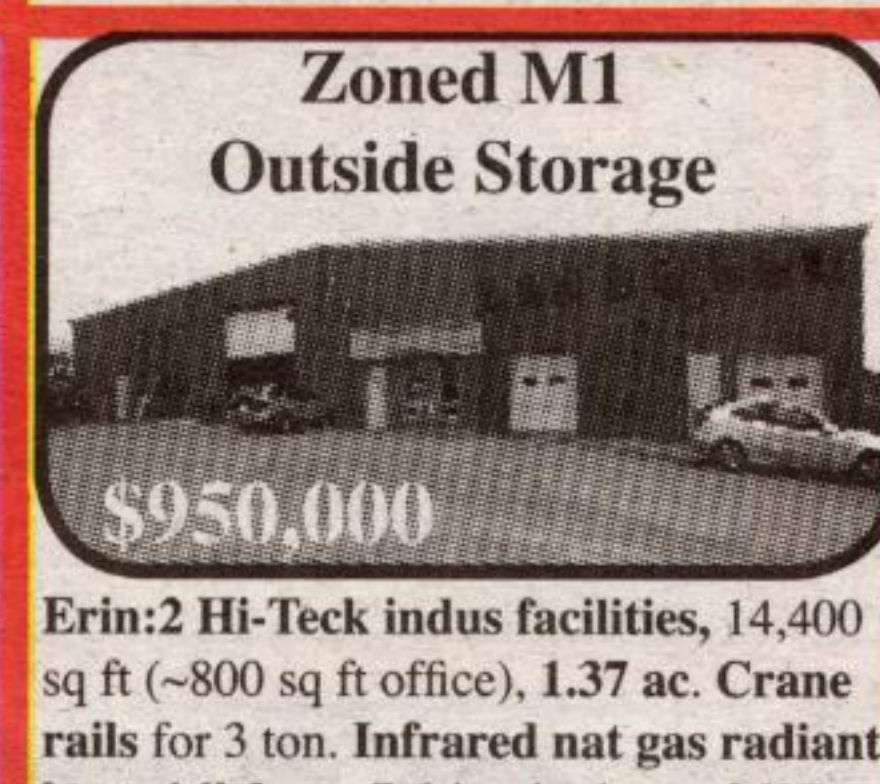
2 car gar, i/g pool, h tub!

Georgetown: 15 Baylor Crescent



NEW

Lovely, spacious 4 bdrm, 2 washroom home on private 65 by 110 ft lot. Double garage. Inground pool (16' x 32') & hot tub! Updated WRs. Renovated kit overlooking DR with walk-out to deck, hot tub, pool & yard. Cabana & shed. Rec rm with wood burning fireplace & office. Located on quiet crescent with quick access to Hwy 7, W.C. & 401. \$349,000



**Zoned M1
Outside Storage**

\$950,000

Erin: 2 Hi-Tech indus facilities, 14,400 sq ft (~800 sq ft office), 1.37 ac. Crane rails for 3 ton. Infrared nat gas radiant heat. 16' clear. 7 drive-in doors. 3 WRs. 600 volts, 200 amps, 3 phase. Security.



3+AC

\$779,900

Halton Hills: Exquisite 4 bdrm, 5WR, estate w fin walkout lower level. ~ 10 min to 401 at Hwy 25. Upgraded kit with 2 Jenn-air stoves, b/i microwave, centre island, granite counter tops, extra cabinets. Prof decorated. Hi-speed internet!!

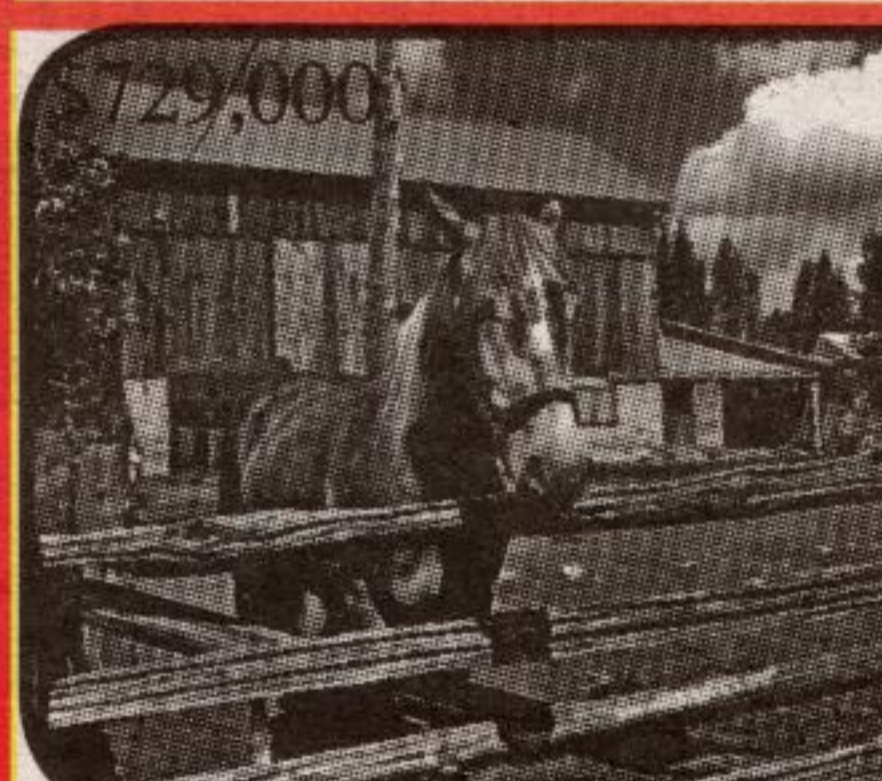


NEW

\$449,900

Stunning! Highly upgraded! 3bdrm, 2wshrm. Patterned concrete; prof landscaped; sprinkler systems; new front & gar doors; heated i/g pool; cedar pool cabana, hrdwd in LR, DR & kit; Fr drs to LR & DR; 2 gas FPs, lower level with oak wet bar, porcelain ceramic tiles, b/i media room with FP; office & 3 piece. No pets, non smokers. Move in condition. Must be seen.

Georgetown: Prof fin lower level + pool

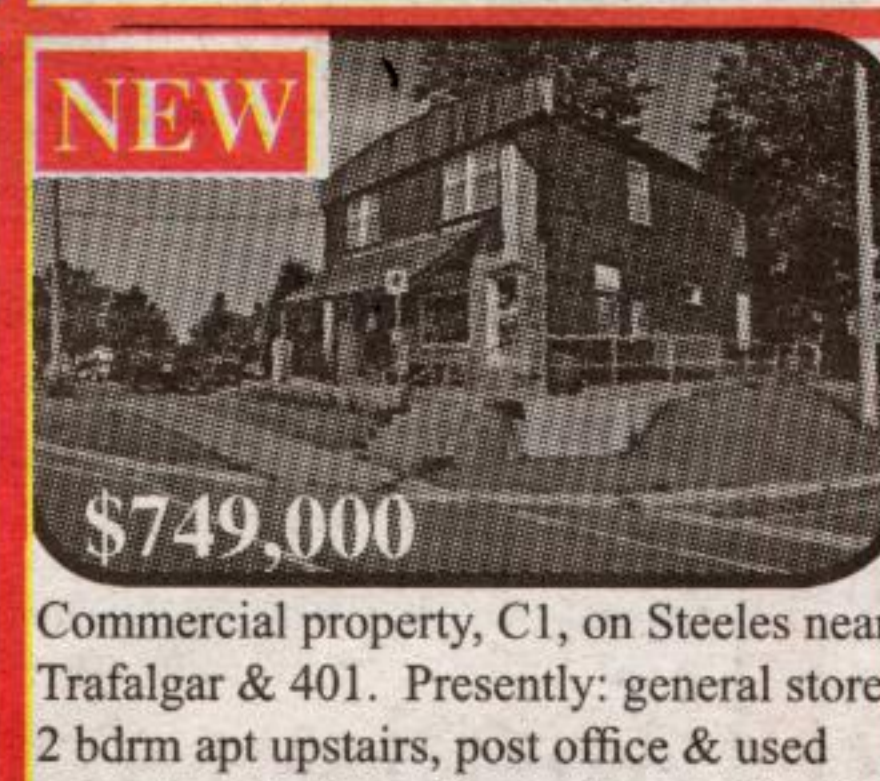


729,000

NEW

Milton: ~42.5ac, Greenbelt protected

Rare, secluded, picturesque land with ~ 25ac mature forest, 8ac hay, 4ac pasture, riding ring & groomed trails. < 35 min to airport. Gently rolling w old stone walls, mature trees & creek. Bank barn. Drive shed. Lovely 3 bdrm bungalow on knoll w MF Indry. 2 walkouts to deck under mature trees. Loc next to 50ac Agreement Forest with groomed trails.



NEW

\$749,000

Commercial property, C1, on Steeles near Trafalgar & 401. Presently: general store, 2 bdrm apt upstairs, post office & used car sales lot. Com, Secondary residential & Institutional. "As is". Exclude contents.



\$785,000

27Ac

Halton Hills: near Milton. 1289' F on 15th SR; 234' F on Hwy 25. Gated. Lit paved driveway. 4 bdrms, 3+ WRs, MF Fam rm, 3 FPs, 2 car gar. Shop: (~18' x 32'). Rogers cable. 8 min to GO.