

FEATURE HOMES

OPEN HOUSE - SAT. 2-4 PM & SUN. 12-3 PM
5364 WINSTON CHURCHILL BLVD., ERIN



SANDRA BRIANCEAU
 *Sales Rep.

519-833-0888
 1-866-901-0888

CHESTNUT PARK
 www.sandrabrianceau.com

MANY OPPORTUNITIES

\$409,000. Century stone cut farmhouse on a rolling 2.66 acres in Erin Country/Caledon Border. Excellent exposure for home based business!! Many major upgrades completed...all windows, 200 amp, 2 new baths, loft, plumbing, insulation and drywall, new large capacity septic and much more. Call **Sandra Brianceau*** for details.

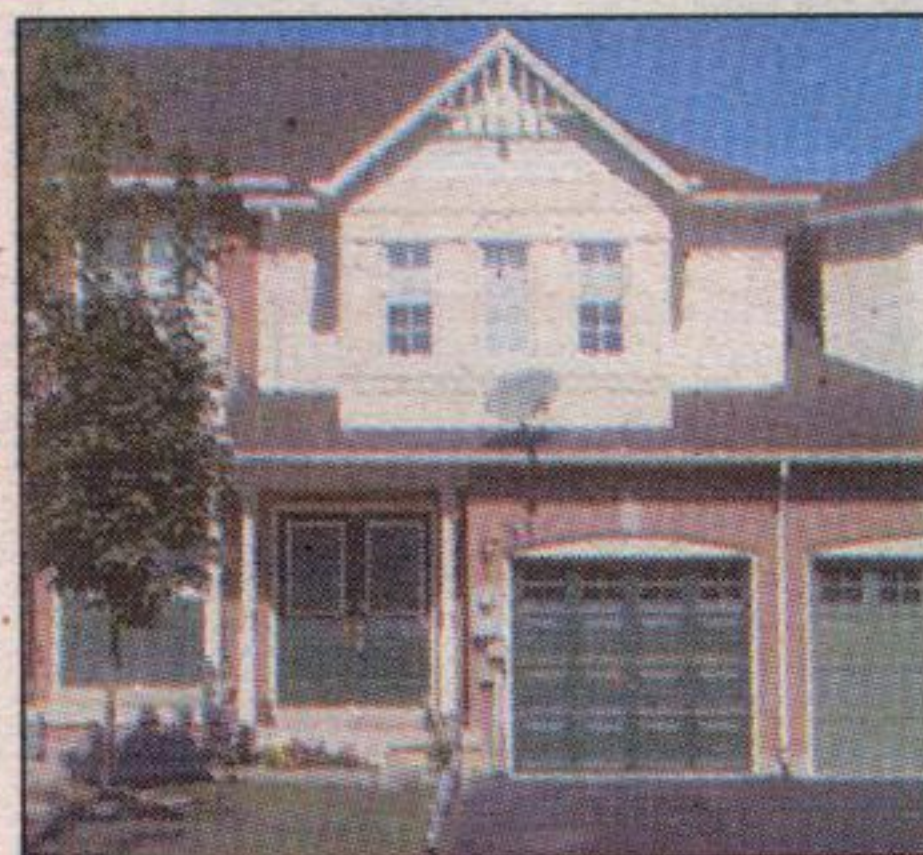
OPEN HOUSE
SAT. 2-4 P.M.
31 DOMINION GARDENS DRIVE



DIANNE VIENNEAU
 *Sales Rep.

(905) 827-6454

RE/MAX
 Garden City Realty Inc.



\$229,900

3 bedroom freehold town with open concept living/dining room & kitchen. Ensuite privilege from master bedroom. Walkout to fenced good-size back yard with patio. Central air. See you Saturday!

NEW

\$379,900



CHERYL JACKSON*
 *Sales Rep.

(905) 450-8300
 1-888-450-8301

Century 21
 Millennium Inc. Broker



PEACE AND TRANQUILITY

with 3/4 acre fenced and manicured on outskirts of town. Custom built spacious 3 bedroom bungalow. New laminate flooring in kit., family room and hall. Family room h as wood burning FP and open to kitchen. Formal LR & DR with W/O to yard. MBR has full ensuite and W/O to patio. Bsmt. part. fin. with office. Super country property within minutes of Georgetown. Call Cheryl Jackson* for further details 905-450-8300.



NOW \$349,900!!



JILL JOHNSON
 *Sales Rep.

(905) 877-5165

Johnson Associates
 HALTON LTD., REALTOR

ERIN HEIGHTS UPDATED

Bright and spacious sidesplit with beautiful views and sunsets!! A great family home in a great neighbourhood. Walk to golf, Cataract Trail, Cultural Centre, schools and shops. Open concept living area, bright renovated kitchen, walkouts to yard from dining area and family room (with woodburning fireplace, new berber carpet). Updated baths. Large yard with perennial gardens and mature trees. Priced to sell!!!! Please call Jill Johnson* at 905-877-5165. 05-574-91

OPEN HOUSE
SAT. 2-4 PM & SUN. 11-1 PM



STEVE JENKINS
 *Sales Rep.

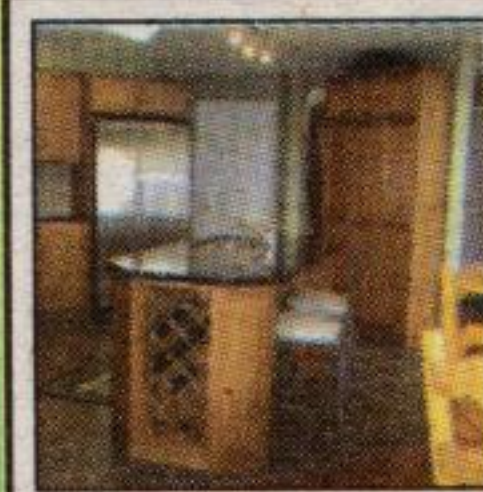
(905) 877-5165

Johnson Associates
 HALTON LTD., REALTOR



79 BERTON, GEORGETOWN

This stunning open concept, 2 bdrm plus den (which could easily be a 3rd bdrm) on a premium lot features gleaming "rosewood oak" hardwood floors and beautiful ceramics throughout. The spacious master features a 4 pc ensuite with a huge soaker tub, separate shower with ceramic surround and upgraded faucets. Unfinished basement with high ceilings and expansive spaces awaits your finishing touches! Motivated vendors. Bring your offer!



NEW



VERONICA GRABELL
 *Sales Rep.

1-800-290-0163

ROYAL LEPAGE
 Burloak R.E. Services



SHOWS LIKE A MODEL HOME

Gorgeous 4 bedroom, hardwood top to bottom, Barzotti cabinetry, centre island with breakfast bar, granite counters, mn floor laundry with glass block, vaulted ceilings in entry foyer & family room, skylights, whirlpool tub, fireplace, fabulous layout, custom designed, oversized garage, mint condition. Call for private viewing only please. Price \$427,900.

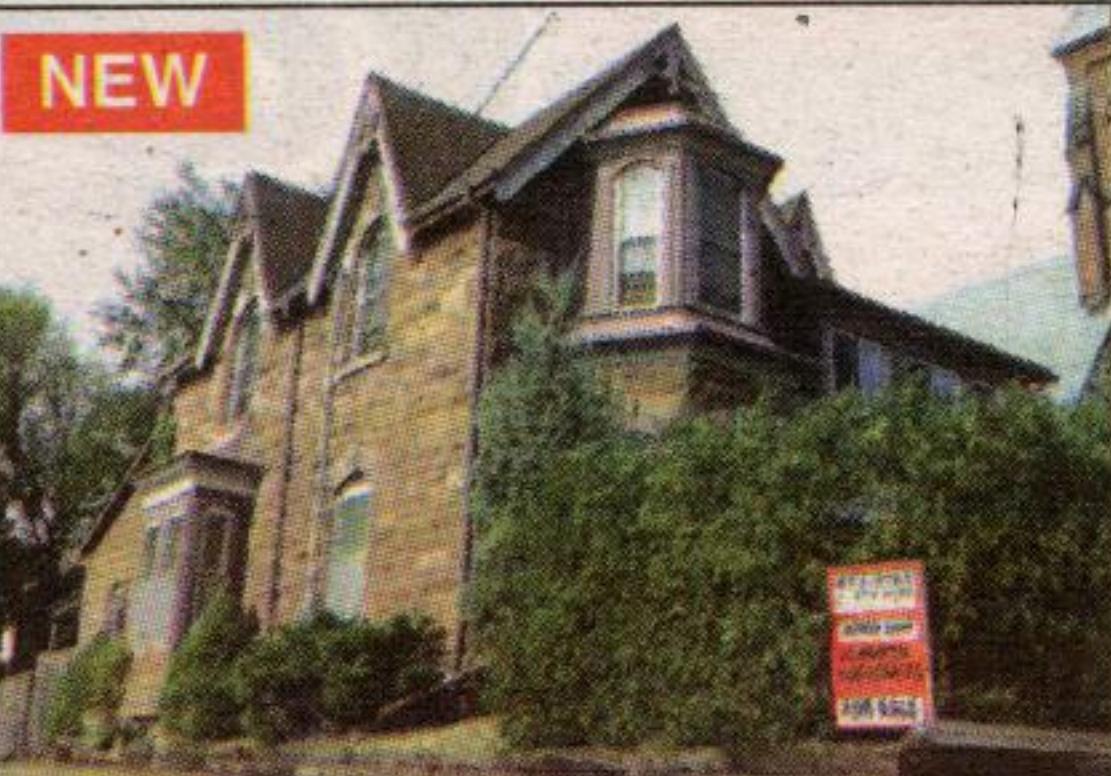
OPEN HOUSE
Sun. Sept. 25, 2-4 pm
16 Main St. S., Georgetown



JOHN DAY
 *Sales Rep.

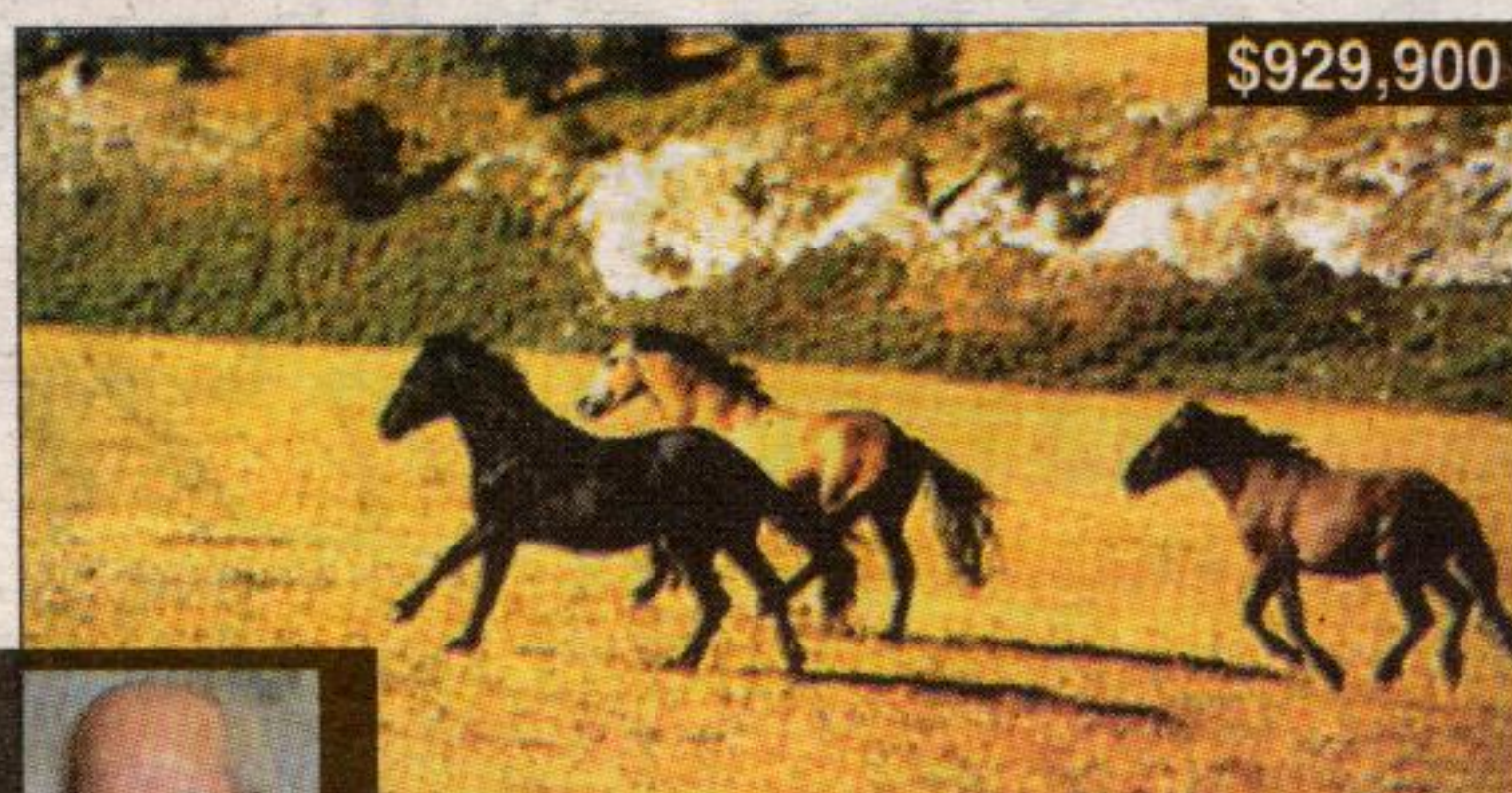
(905) 877-5165

Johnson Associates
 HALTON LTD., REALTOR

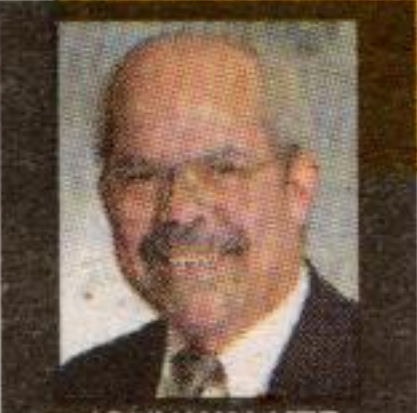


OVERLOOK DOWNTOWN GEORGETOWN AND FARMERS' MARKET

This 1886 stone home in old downtown Georgetown won't last long. Numerous upgrades and renovations. Features 9' ceilings, curved staircase, mn flr library with built-in bookcase. Gas FP in family rm, w/o to deck. Mn flr laundry. Upgrades to kit. and upstairs bathroom. Appliances and window coverings included. Double car carport with loft of artist's studio heated by propane. Driveway is ROW. Property is zoned C2. Great opportunity for commercial/residential uses. \$374,900. 05-610-30



\$929,900



JOHN WALKER
 SALES REPRESENTATIVE

(905) 450-8300

Century 21
 Millennium Inc. Broker

EQUESTRIAN FARM

Excellent Standardbred horse training facility or hobby farm. Comfortable upgraded 3500 sq. ft. home on 26 ac. with great escarpment views. Enjoy privacy setback of 400 ft. Acres of padocks: bank barn with 20 stalls, half mile training track; two road frontages. Call John Walker for your own appointment or email jowalker@trebnet.com

OPEN HOUSE
Sun. Sept. 25, 2-4 pm
9456 Copeland Path West off Trafalgar just north of 5 Sdrd, Erin



MARTHA SUMMERS.CA
 *Sales Rep.

(905) 877-5165

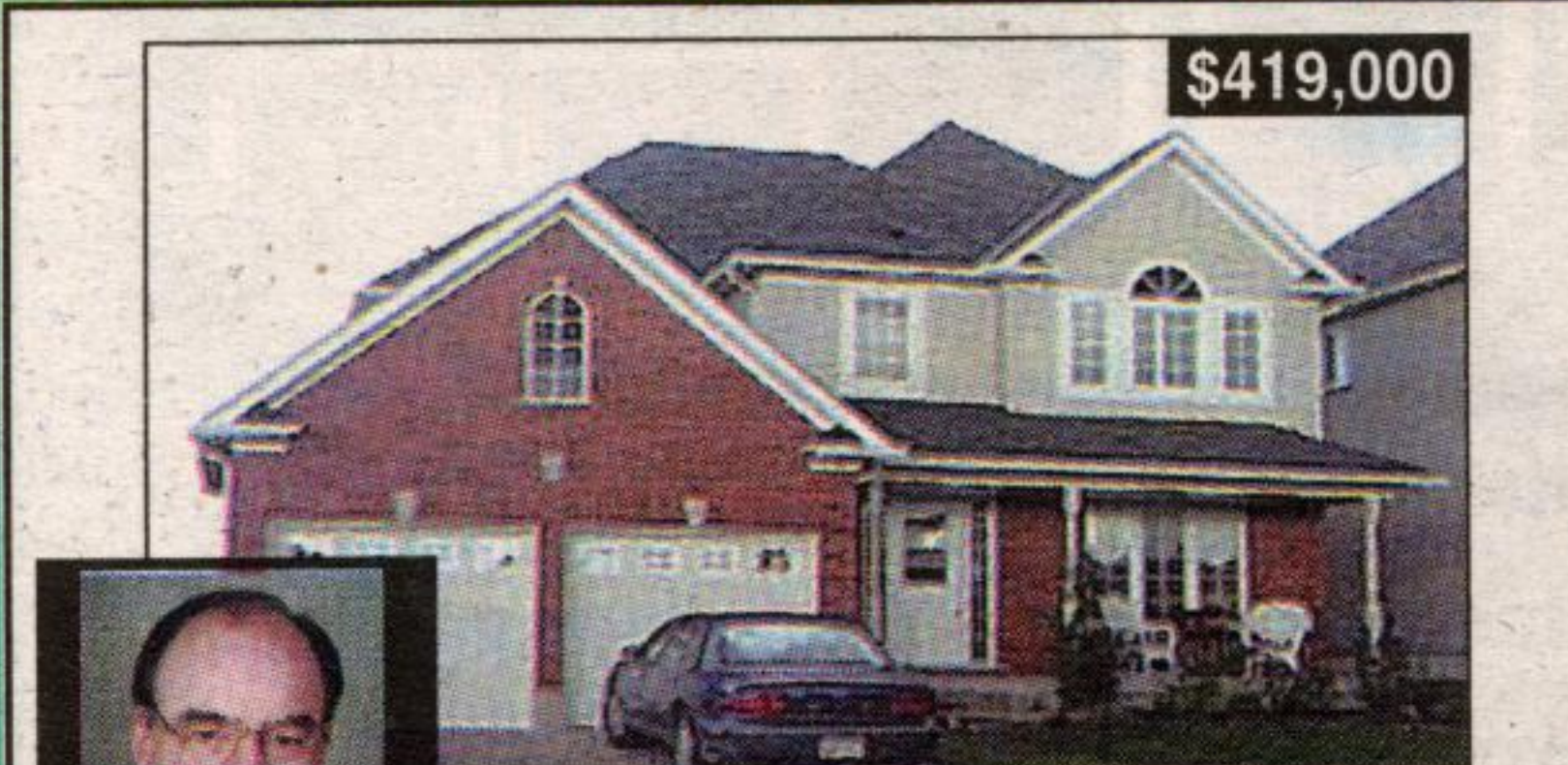
Johnson Associates
 HALTON LTD., REALTOR



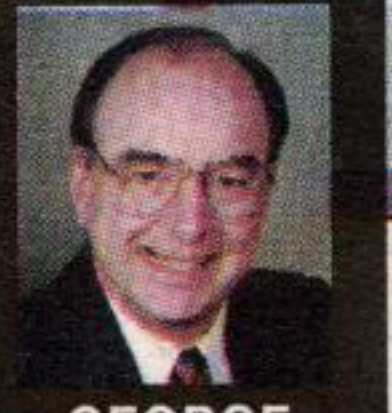
NATURE LOVERS DELIGHT - 10 ACRES

Sun-filled stone bungalow w/partially finished lower level at walkout. Vaulted ceilings, open concept, country with neighbours close by. Walk thru woods or enjoy nature on your own pond. \$599,000. MarthaSummers.ca*

www.marthasummers.ca
 Performance Award Last 12 Years



\$419,000



GEORGE CROFT
 Associate Broker

(905) 452-7272

Prudential
 Vendex Realty

FABULOUS 4 BDRM. HOME WITH IN-LAW SUITE WITH SEPARATE ENTRANCE

This home features large eat-in kitchen with a walkout. Upgraded cabinetry, maple flooring in hallway, kitchen, family room & staircase. Large family room with gas F/P & California shutters. 2nd floor laundry, large master bdrm. with 4 pc. ensuite & W/I closet. 3 add'l. bedrooms, basement has sep. entrance and has LR/DR, kitchen, bedroom, office and bathroom with jacuzzi tub.

OPEN HOUSE
SUN. SEPT. 25, 2-4 PM
320 Alma St. Rockwood

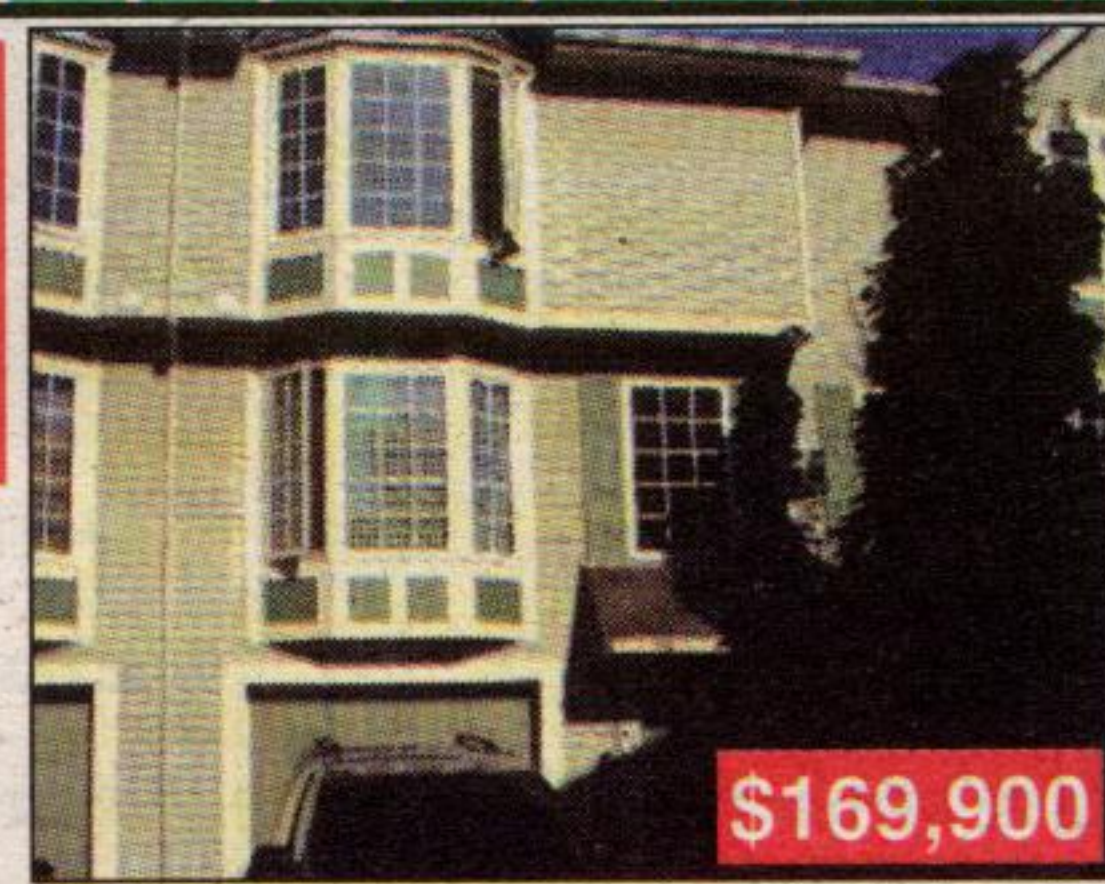


PAUL CAMPBELL
 *Sales Rep.

519-856-0135

1-866-616-0210

RE/MAX
 REAL ESTATE CENTRE



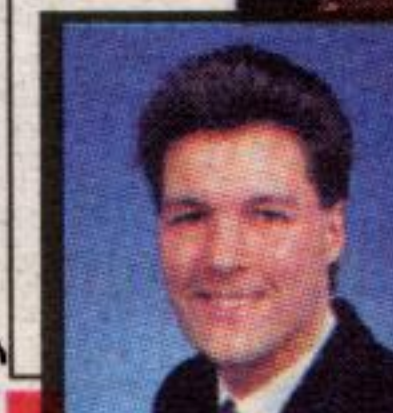
\$169,900

AFFORDABLE LIVING

Steps to the Conservation Area, backing onto woodlands. Clean, freshly painted 3 bedroom townhouse. Den on main level with walkout to patio area with country views. Great townhouse only minutes to Guelph and to 401, in the Village of Rockwood. 3 bedrooms, 2 bathrooms. Call **Paul Campbell***

Buy this home from me & I'll buy yours for CASH!
 see more photos at: www.viewonthenet.com

JUST LISTED



DAVID PEGORER*
 Broker

(905) 542-SOLD (7653)

RE/MAX
 Performance Realty Inc., Realtor



\$379,900

OPEN HOUSE SUNDAY 2 - 4 PM
41 BERTON BLVD., HALTON HILLS

- Hardwood & Ceramic thru main floor
- Main Floor Family Room
- Access to garage/laundry
- Freshly Painted (04)
- 3 yr. new Sunfield Home
- Approx. 2,300 sq./ft model
- Professionally Landscaped (04)
- Spiral Wood Staircase

Shows like "BRAND NEW" and is across from a park!
 Call Toll Free today at 888-512-9062