

GOING, GOING... you get the picture.

HURRY
OFFER ENDS SEPTEMBER 30TH



GET INTO A 2005 CHEVROLET BEFORE THEY'RE GONE.



2005 CHEVROLET UPLANDER

SEE HOW UPLANDER COMPARES:

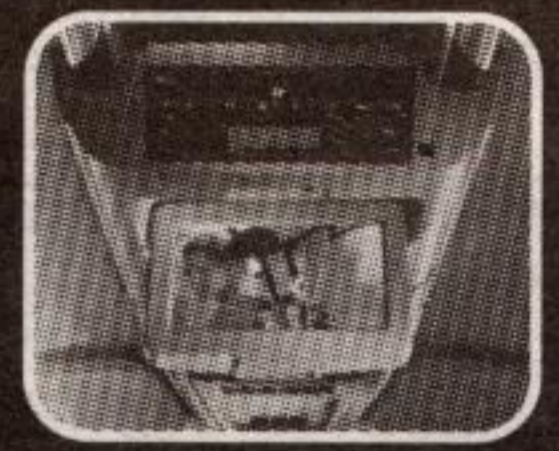
	FEATURES	2005 RWB UPLANDER 1SA	2005 DODGE CARAVAN 28C
SAFETY AND SECURITY	BRAKING	4-WHEEL DISC BRAKES	FRONT DISC/REAR DRUM BRAKES
	ANTI-LOCK BRAKES	STANDARD	OPTIONAL
	ONSTAR	STANDARD - INCLUDES ONE YEAR SAFE AND SOUND PLAN	NOT AVAILABLE
PERFORMANCE	ENGINE HP	3.5L 200 HP V6	3.3L 180 HP V6
	WHEELS	16" STEEL	15" STEEL
COMFORT AND CONVENIENCE	REMOTE KEYLESS ENTRY	STANDARD	OPTIONAL
	MP3 PLAYER	STANDARD	NOT AVAILABLE
	OVERHEAD RAIL SYSTEM	STANDARD	NOT AVAILABLE
	THIRD ROW SEAT	50/50 SPLIT FOLD-FLAT REMOVABLE	FULL BENCH FOLD-FLAT REMOVABLE
	REMOTE START-FACTORY INSTALLED	OPTIONAL	NOT AVAILABLE

Based on available competitive information.

GET INTO THE ULTIMATE ROAD TRIP EDITION (R7H)

Includes Uplander's extensive list of standard features PLUS:

- DVD ENTERTAINMENT SYSTEM
- CRUISE CONTROL
- DEEP TINTED GLASS
- FLOOR MATS



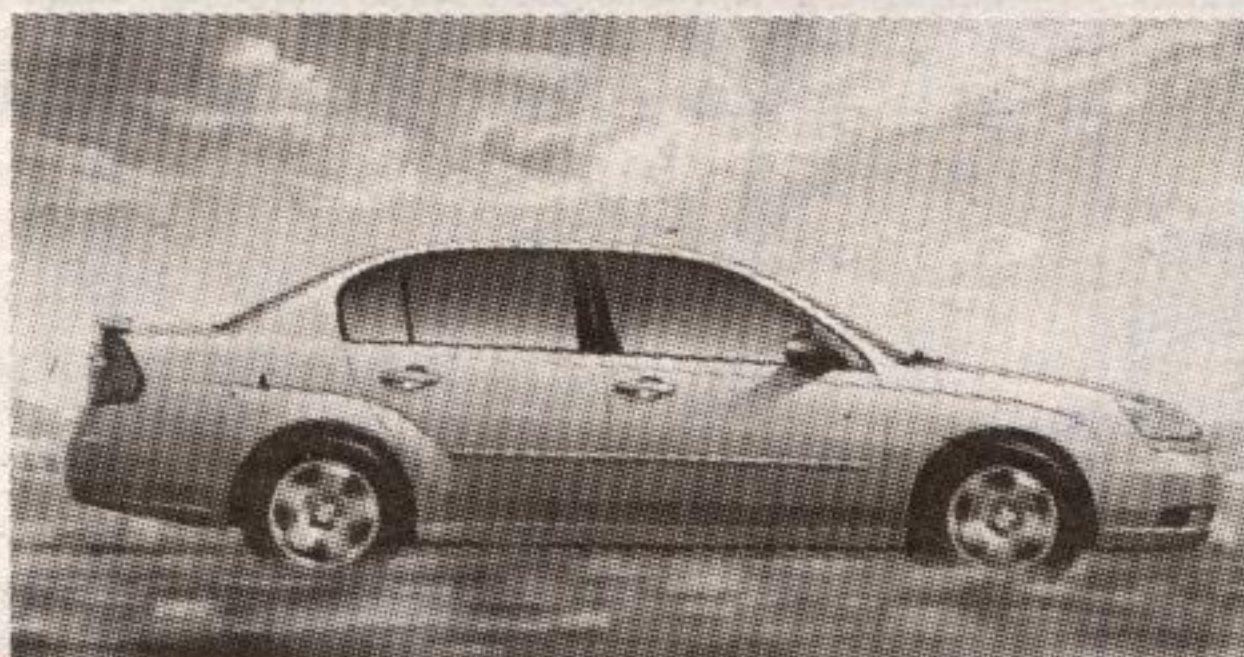
FOR ONLY

CASH PURCHASE PRICE
\$21,095[†]

SMARTLEASE
\$170[†]/4.75%

PER MONTH/24 MONTHS LEASE RATE
\$5,095 DOWN PAYMENT

EMPLOYEE DISCOUNT ON VIRTUALLY ALL 2005s INCLUDING:



2005 CHEVROLET MALIBU



2005 CHEVROLET SILVERADO



2005 CHEVROLET AVALANCHE



Available on Uplander models.

CHEVROLET  **FOR ALL LIFE'S ROADS**

For the latest information, visit us at gmcanada.com, drop by your local Chevrolet dealer or call us at 1-800-GM-DRIVE. *Excludes 2005 Corvette and 2005 Medium Duty Trucks. Applies to new 2005 vehicles delivered out of dealer stock on or before September 30, 2005. Dealer trade may be required. Limited quantities of 2005 models are available. Limited time offer. Dealer may sell for less. See dealer for details. †Offer applies to 2005 Uplander RWB R7H new or demonstrator models. Based on a 24 month lease. Lease APR may vary depending on amount of down payment/trade. A down payment or trade of \$5,095 and \$0 security deposit required. Option to purchase at lease end is \$12,274 plus applicable taxes. Other lease options are available. ‡The cash purchase price shown includes a \$3,600 manufacturer-to-retailer credit. ††Freight (\$1,120), license, insurance, registration, PPSA, administration fees and taxes are not included. Offers apply to qualified retail customers in the Ontario Chevrolet Dealer Marketing Association area only (including Outaouais and excluding Northwestern Ontario). Dealer trade may be required. Limited quantities of 2005 models available. Dealers are free to set individual prices. Limited time offer which may not be combined with other offers. See your dealer for conditions and details. †††Warranty based on 5-years or 100,000km, whichever comes first. See your dealer for conditions and details. †††Registered trademark of General Motors Corporation. †††Canada Trust licensed user of mark. †††Registered trademark of General Motors Corporation. †††Canada Trust licensed user of mark. †††International Service Association/†††Canada Trust and GM licensed user of marks. †††Trade-mark of The Toronto-Dominion Bank.