



MARILYN WORRALL
Sales Representative

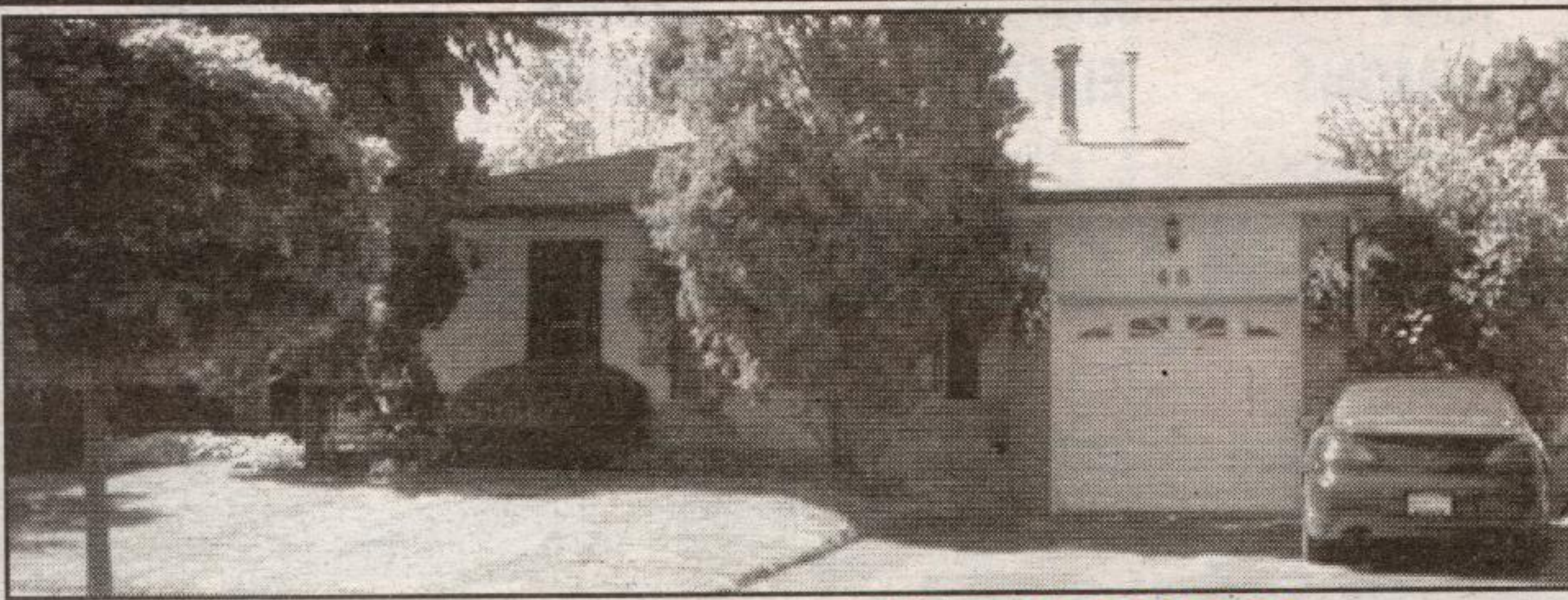
RE/MAX REAL ESTATE CENTRE
(519) 853-2086
1-888-833-1945



NEW PRICE

FAMILY SIZED HOME

Less than one year old, this large home in Rockwood consists of 4 bedrooms, 4 baths, open concept great room & stunning kitchen. Loads of upgrades, such as 200 AMP service, series 800 doors, Crown mouldings, Oak cabinetry (stained a rich burgundy), jacuzzi tub, etc. The lower level has a separate side entry, high ceilings, r/in wiring, 3 pc bath, lots of large windows and awaits your finishing touches. Call me to view. Listed at \$337,000.



CLOSE TO GEORGE KENNEDY SCHOOL

Well maintained home in great neighbourhood. Close to shopping. Home has interlocking patios, inground pool, extra large lot with mature trees. 3 baths, 3-5 bedrooms, rec room with woodstove. New roof, ceramics, french doors, oak cabinetry in eat-in kitchen and includes most appliances. Call me for more details. Offered at \$314,900.

DOUG MEAL • 905-877-5211 • DOUG MEAL DOUG MEAL • 905-877-5211 • DOUG MEAL



DOUG MEAL
*Sales Rep.

RE/MAX REAL ESTATE CENTRE

905-877-5211

DOUG MEAL • 905-877-5211 • DOUG MEAL DOUG MEAL • 905-877-5211 • DOUG



\$289,900

SPACE!!

This one has room for everyone - a total of 5 bedrooms. Finished basement rec room with bathroom. Newer eat-in kitchen, family room addition, remodeled master with large walk-in closet, newer windows, ceramics, laminate floor and more. Call Doug*.



JIM AKERS

*Sales Rep.

(905) 877-5165

Johnson Associates
HALTON LTD., REALTOR



\$279,900

LOOKING FOR A SWEET RETREAT?

Zero in on this tri-Level with an air of class! Brick/aluminum facade. Private drive. Convenient glass sliders, a charming and private master suite. 3 BR/1-2 pce, 1-4 pce baths. Central air. Finished basement. Deck. Popular Avon Special Model. **Jim Akers*** (905) 873-6744. 05-420-30



HALL OF FAME
Town & Country Sales Representative

RE/MAX Real Estate Centre Inc.

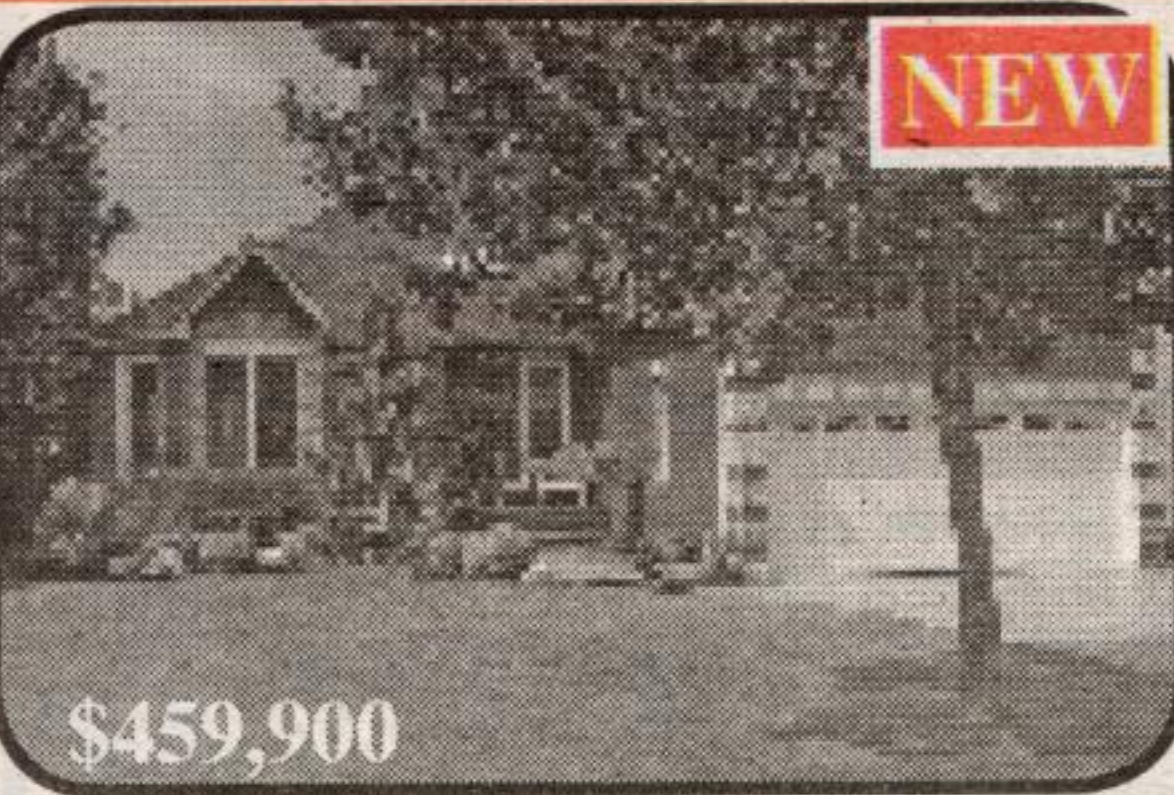
(905) 877-5211

1-800-834-5516

Directions & Photos

<http://maureen.ca>

Maureen Plucinsky B.Sc.

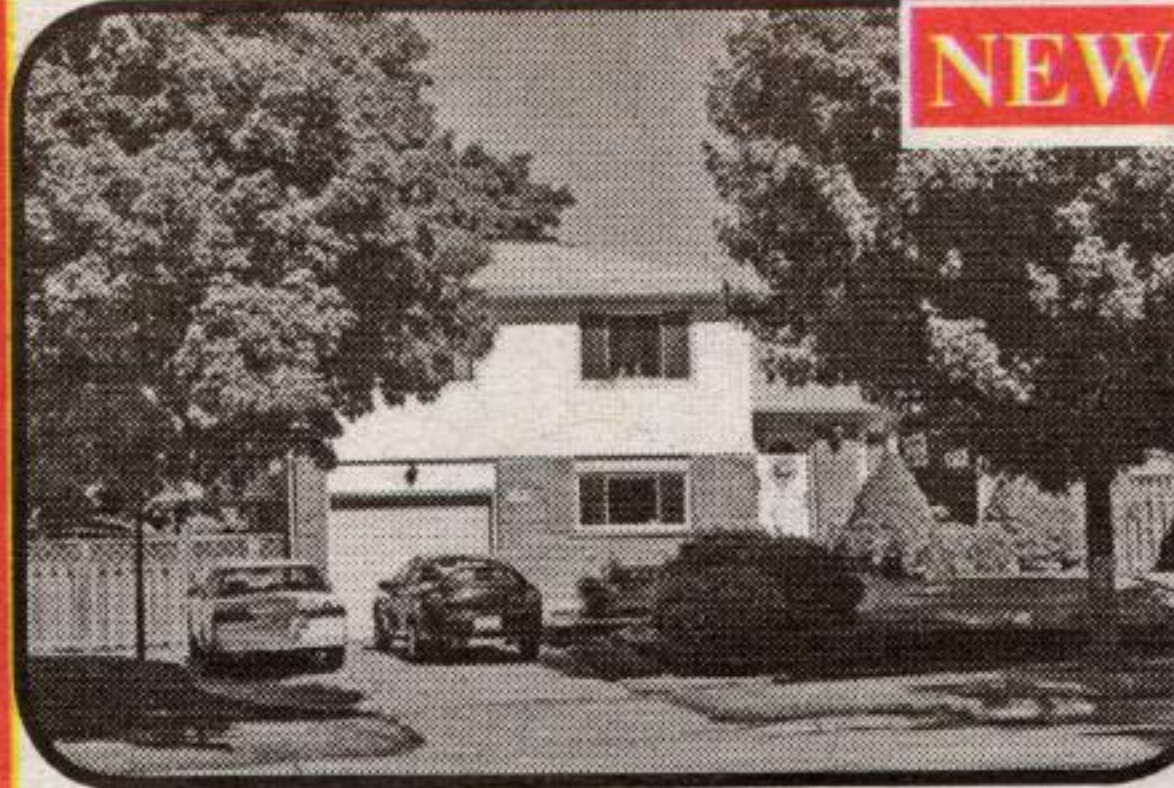


NEW

\$459,900

Georgetown: Prof fin lower level + pool

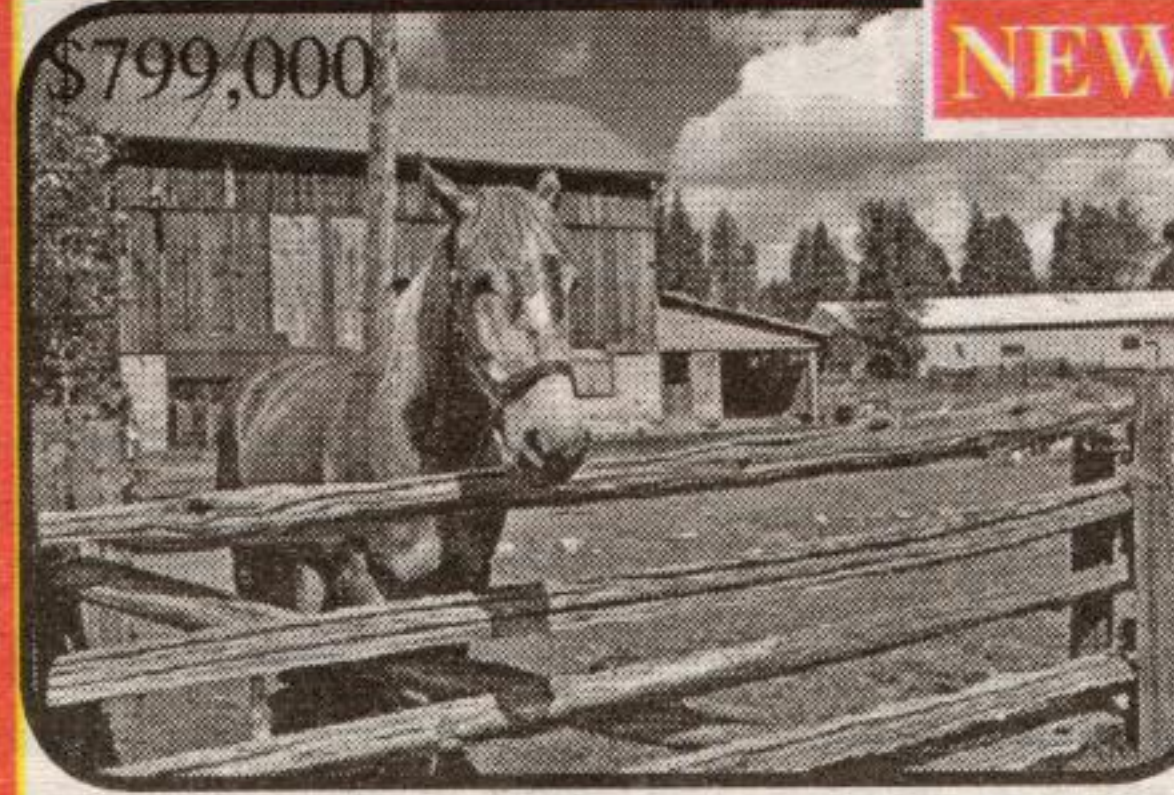
Stunning! Highly upgraded! 3bdrm, 2wshrm. Patterned concrete; prof landscaped; sprinkler systems; new front & gar doors; heated i/g pool; cedar pool cabana, hrdwd in LR, DR & kit; Fr drs to LR & DR; 2 gas FPs, lower level with oak wet bar, porcelain ceramic tiles, b/i media room with FP; office & 3 piece. No pets, non smokers. Move in condition. Must be seen.



NEW

Georgetown: 33 Rosefield Drive

Upgrades galore! Larger than it looks. 5+1 bdrm, 3 full washrms. Wheelchair accessible Family room, bdrm & washroom. Large square Fam rm with floor/ceiling granite FP. Lowest level with 6th bdrm, 3pc & roughed-in kit. Large landscaped lot on quiet street. Walk to grade & middle school. Quick access to Hwy 7, W. C. Blvd & 401. Great value. \$345,000



NEW

Milton: ~42.5ac, Greenbelt protected

Rare, secluded, picturesque land with ~25ac mature forest, 8ac hay, 4ac pasture, riding ring & groomed trails. <35 min to airport. Gently rolling w old stone walls, mature trees & creek. Bank barn. Drive shed. Lovely 3 bdrm bungalow on knoll w MF Indry. 2 walkouts to deck under mature trees. Loc next to 50ac Agreement Forest with groomed trails.



\$890,000

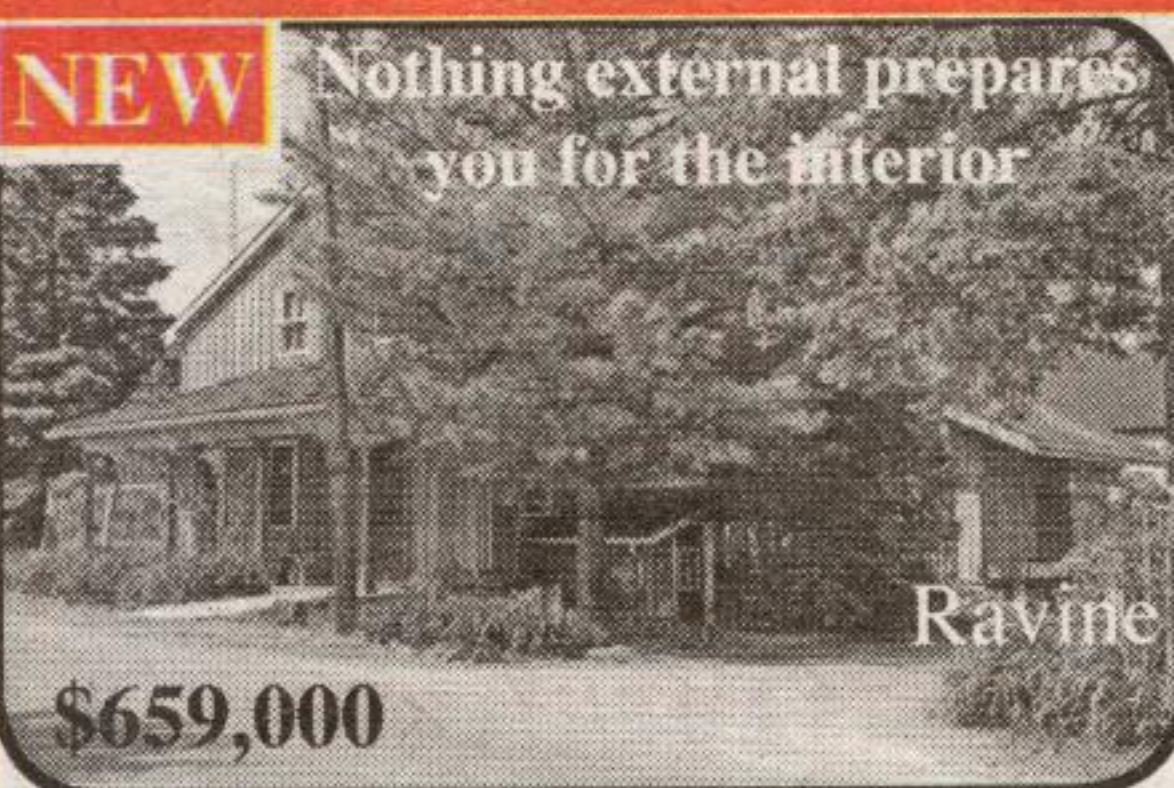
Milton: 100 "sq" Ac

~4 min to 401 at Guelph Line. Near Mohawk Track & Casino. NW corner of 2nd L & 10th SR. Fronts on 2 paved rds. Across from school. Good barn & drive shed. Perfect for horse facility.



~186 Ac

Caledon: fine race horse facility. ~49 stalls. 4 large barns + new office/lab/breeding barn. 3 tracks. Manager's house & 2 staff trailers. S of Hwy 9, W of Airport Rd. 19726 Mountainview Rd



NEW Nothing external prepares you for the interior

\$659,000

Everton: go to <http://maureen.ca>

Stunning Olde English Pub style home + sep gar/shop + studio. Gorgeous lot backing onto gorge & river. Focal pt: "theater" kit o/l DR & Fam Rm w wet bar + modern kit. LR w FP with mantel from Fed Parliament building. 3 FPs! Hand fin columns & beams! 3" thick front dr, old church drs & jail cell door! Bdrms with ensuites & bar areas! Wine cellar.



+ Dream Shop/Games Rm + Barn

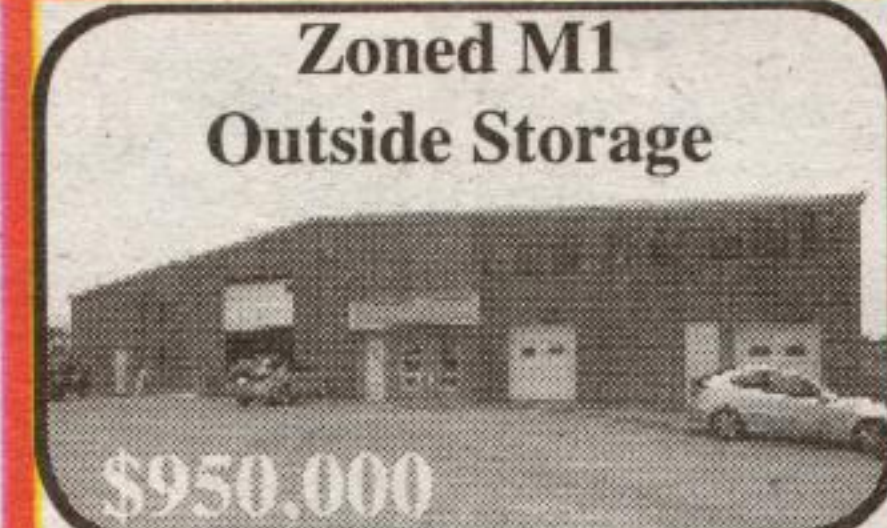
\$799,900

7 Car Garage

5.25 Ac

West Garafraxa: North of Rockwood

Fab 5.25ac estate w over 4000 sqft of living space. Barn (40' x 24') w 3 oak horse stalls. Out building (2,700sq ft w heat & CAC) divided into: games rm (756 sq ft); shop (1270 sq ft) w 2 offices & 2pc & utility gar (675 sq ft), all in excel condition. Loc on private parcel w stream & 2 ponds. Just N of Oustic & 5 min E of Fergus. ~35 min to Georgetown & GO.



Zoned M1 Outside Storage

\$950,000

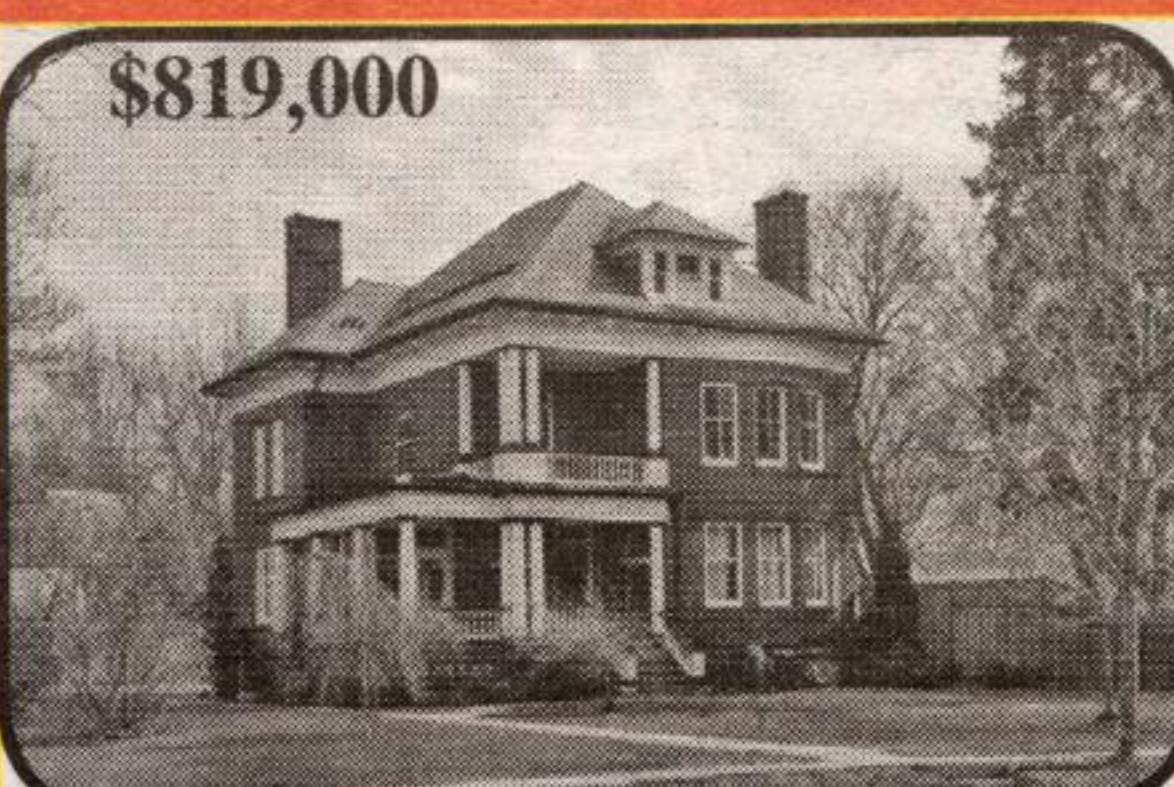
Erin: 2 Hi-Tech indus facilities, 14,400 sq ft (~800 sq ft office), 1.37 ac. Crane rails for 3 ton. Infrared nat gas radiant heat. 16' clear. 7 drive-in doors. 3 WRs. 600 volts, 200 amps, 3 phase. Security.



NEW 3+AC

\$779,900

Halton Hills: Exquisite 4 bdrm, 5WR, estate w fin walkout lower level. ~10 min to 401 at Hwy 25. Upgraded kit with 2 Jenn-air stoves, b/i microwave, centre island, granite counter tops, extra cabinets. Prof decorated. Hi-speed internet!!



\$819,000

Acton: Halton Hills Majestic

"Moorecroft". Authentic Queen Anne, 1896. Columns! Wrap around porch! Inviting vestibule. Impressive central hall. LR with hrdwd fl, curved wall & FP. Library with pocket drs, hrdwd fl, b/i bookcase & stained glass! DR with hardwood floor & FP. 4+ bdrms. 3 WRs. Bsmt with rec rm, 3pc & wine cellar. I/g pool. 2 car gar. double lot. Heritage!



\$334,900

Halton Hills, Acton: 44 Rachlin Drive

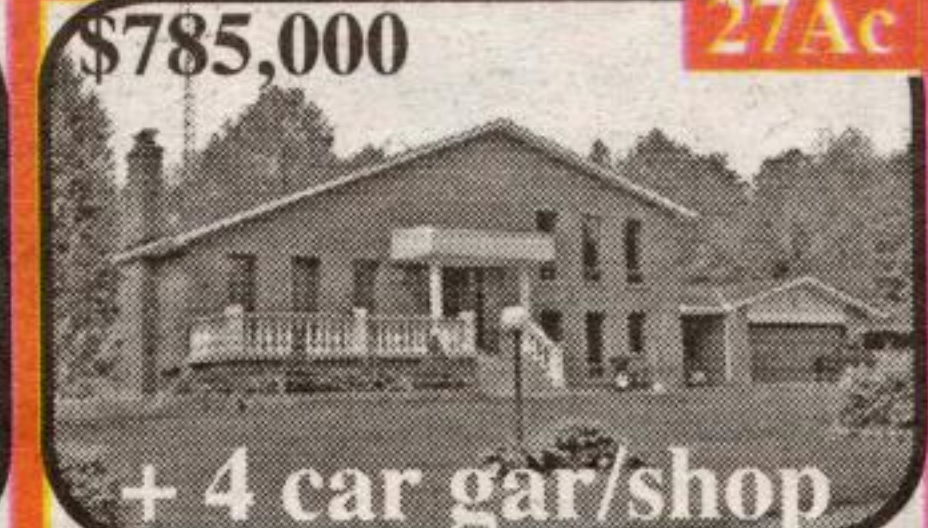
NEW Stunning, bright, "Finoro" backsplitted full lower level on premium, pie shaped, lot on knoll with great views. Backs onto greenspace. Highly upgraded: oversized gar, door from garage, kit, berber carpet, 3 xlarge windows, r/i 3pc, main WR w corner tub & sep shower. Designed for optional bdrm on main level. Incl: fridge, stove, dishwasher, CAC, CVAC & water softener.



NEW

\$749,000

Commercial property, C1, on Steeles near Trafalgar & 401. Presently: general store, 2 bdrm apt upstairs, post office & used car sales lot. Com, Secondary residential & Institutional. "As is". Exclude contents.



\$785,000 27Ac

+ 4 car gar/shop

Halton Hills: near Milton. 1289' F on 15th SR; 234' F on Hwy 25. Gated. Lit paved driveway. 4 bdrms, 3+ WRs, MF Fam rm, 3 FPs, 2 car gar. Shop: (~18' x 32'). Rogers cable. 8 min to GO.